

TE CONNECTIVITY (TE) RESERVES THE RIGHT TO CHANGE THIS DRAWING AT ANYTIME. USERS SHOULD EVALUATE THE SUITABILITY OF THE PRODUCT FOR THEIR APPLICATION.	REVISION			
	LTR	DESCRIPTION	DATE	APPROVED
	R	REVISED PER ECO-15-008666	06/09/2015	I. MYONG
R1	REVISED PER RTS-1185705	10/27/2015	I. MYONG	

SOLID:

201M9 08 - 19 B

PRODUCT DESIGNATOR _____
ORDER NUMBER _____
FOR CODE 18 DASH MAY BE REPLACED BY _____
A LETTER (SEE TABLE III OF SCD 218M9XX)
MATERIAL (SEE TABLE I) _____
FINISH (SEE S-CH00-0157-002) _____

MODIFICATIONS (OMIT IF NOT REQUIRED)

201M908-19B - 20 M R ET N

OPTION FIELD SEPARATOR _____
20 - GROUNDING SCREW (SEE FIGURE 1) _____
M - STRAIN RELIEF HOLES (SEE FIGURE 2) _____
R - WITHOUT INTERFACE COMPRESSION RING (SEE FIGURE 6) _____
ET - EARTH TAG (UK USE ONLY) SEE FIGURE 7 _____


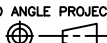
OPTIONAL O-RING MATERIAL _____
(OMIT FOR STANDARD SILICONE, A-A-59588, GRADE 70: S59)
C: NEOPRENE PER SAE-AMS3209
U: FLOUROSILICONE PER SAE-AS7276, CLASS 1
N: NITRILE (BUNA N) PER SAE-AMS3215
V: FLUOROCARBON PER SAE-AS7276, CLASS 1

NOTES:

1. -DELETED-
2. FOR ALIGNMENT REQUIREMENTS OF ANGLED BACKSHELLS, REFER TO SHEET 8.

©2015 TE CONNECTIVITY LTD. FAMILY OF COMPANIES. ALL RIGHTS RESERVED
TE CONNECTIVITY AND TE CONNECTIVITY (LOGO) ARE TRADEMARKS.
OTHER LOGOS PRODUCT AND/OR COMPANY NAMES MAY BE TRADEMARKS OF THEIR RESPECTIVE OWNERS.

Raychem Adapters
PRODUCTION SPECIFICATION

UNLESS OTHERWISE SPECIFIED DIMENSIONS ARE IN INCHES. REFERENCE METRIC DIMENSIONS ARE IN BRACKETS [metric].	DRAWN: E. GOLDY	DATE: 05/12/1993		TE Connectivity			
	CHECKED: K. YEE	DATE: 05/08/2012					
DECIMALS TOLERANCES: XXX ± .005 [0.13mm] XX ± .01 [0.25mm] X ± .1 [0.50mm]	APPROVED: I. MYONG	DATE: 06/11/2015	TITLE: GENERAL INFORMATION PACKAGE FOR SOLID, SPIN COUPLING AND SHIELDED ADAPTERS				
	MATERIAL: SEE NOTES	FINISH: SEE NOTES					
ANGLES TOLERANCE: ± 1°	CAD FILE: CH00-0250-004.dwg	THIRD ANGLE PROJECTION: 	SIZE: A	SHEET: 1 OF 8	CAGE CODE: 06090	DRAWING NO: CH00-0250-004	REV. R1
SCALE: DO NOT SCALE THIS DRAWING							

SPIN-COUPLING:**201M1 08 - 19 B**

PRODUCT DESIGNATOR _____
 ORDER NUMBER _____
 FOR CODE 18 DASH MAY BE REPLACED BY
 A LETTER (SEE TABLE III OF SCD 218M9XX) _____
 MATERIAL (SEE TABLE I) _____
 FINISH (SEE S-CH00-0157-002) _____

MODIFICATIONS (OMIT IF NOT REQUIRED)**201M108-19B - D 20 L M ET N**

OPTION FIELD SEPARATOR _____
 D - DRAIN HOLES (SEE FIGURE 3) _____
 20 - GROUNDING SCREW (SEE FIGURE 1) _____
 L - LOCK WIRE HOLES (SEE FIGURE 4) _____
 M - STRAIN RELIEF HOLES (SEE FIGURE 2) _____
 ET - EARTH TAG (UK USE ONLY) SEE FIGURE 7 _____
 OPTIONAL O-RING MATERIAL _____

(OMIT FOR STANDARD SILICONE, A-A-59588, GRADE 70: S59)

C: NEOPRENE PER SAE-AMS3209

U: FLOURSILICONE PER SAE-AS7276, CLASS 1

N: NITRILE (BUNA N) PER SAE-AMS3215

V: FLUOROCARBON PER SAE-AS7276, CLASS 1

Raychem Adapters
 PRODUCTION SPECIFICATION

DO NOT
SCALE THIS
DRAWING

SIZE

A

CAGE

06090

SHEET

2 OF 8

DWG. NO.

CH00-0250-004

REV

R1

SHIELDED:

203M0 08 - 19 B 04

PRODUCT DESIGNATOR _____
 ORDER NUMBER _____
 FOR CODE 18 DASH MAY BE REPLACED BY _____
 A LETTER (SEE TABLE III OF SCD 218M9XX)
 MATERIAL (SEE TABLE I) _____
 FINISH (SEE S-CH00-0157-002) _____
 ENTRY SIZE _____


MODIFICATIONS (OMIT IF NOT REQUIRED)

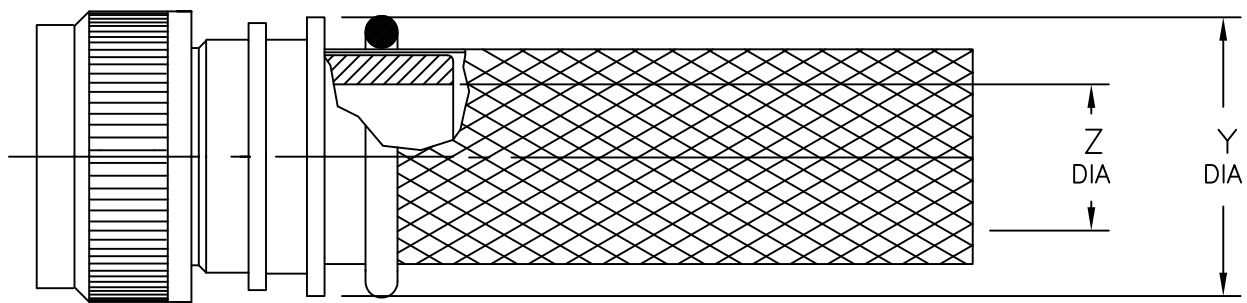
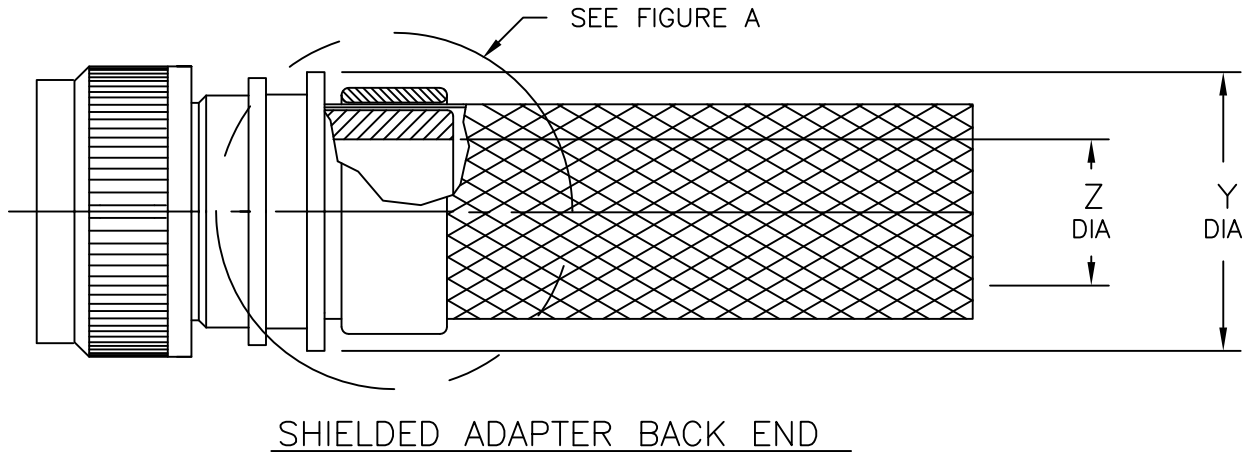
203M008-19B04 - G 12 DS L KNS N

OPTION FIELD SEPARATOR _____
 NAVSEA DESIGNATOR _____
 (PARTS TO BE MARKED WITH NAVSEA NUMBER)
 (SHELL SIZEOVER 24 ONLY, CSR REQUIRED)
 NON-STANDARD SHIELD LENGTH DESIGNATOR _____
 OMIT FOR STANDARD LENGTH, 6 INCHES MINIMUM
 EXAMPLE: 12 INDICATES 12 INCH MINIMUM LENGTH
 SHIELD MODIFICATION DESIGNATOR
 OMIT FOR STANDARD SINGLE LAYERED TIN-PLATED COPPER SHIELD
 DS - DOUBLE LAYERED TIN-PLATED COPPER _____
 NB - NO SHIELD, GROUND RING SUPPLIED LOOSE
 SI - SINGLE LAYER SILVER-PLATED COPPER
 EX - BENTLY HARRIS EXPANDO HR (HALAR)
 NS - NO SHIELD, RING MAGNEFORMED TO ADAPTER
 NI - SINGLE LAYER NICKEL-PLATED COPPER SHIELD
 L - LOCK WIRE HOLES (SEE FIGURE 4) MANUFACTURER'S OPTION _____
 KNS - MAGNEFORM PROFILE REPLACED BY KNURLED BOOT GROOVE _____
 FOR UK USE ONLY (SEE FIGURE 8)
 OPTIONAL O-RING MATERIAL _____
 (OMIT FOR STANDARD SILICONE, A-A-59588, GRADE 70: S59)
 C: NEOPRENE PER SAE-AMS3209
 U: FLOUROSILICONE PER SAE-AS7276, CLASS 1
 N: NITRILE (BUNA N) PER SAE-AMS3215
 V: FLUOROCARBON PER SAE-AS7276, CLASS 1
 Y: NO O-RING SUPPLIED

TABLE I: MATERIAL NUMBER CROSS REFERENCE	
NUMBER	DESCRIPTION
01	NICKEL ALUMINUM BRONZE PER ASTM B150
19	ALUMINUM ALLOY PER SAE AMS-QQ-A-225
62	STAINLESS STEEL PER SAE AMS-QQ-S-763

Raychem Adapters
 PRODUCTION SPECIFICATION

	DO NOT SCALE THIS DRAWING	SIZE A	CAGE 06090	SHEET 3 OF 8	DWG. NO. CH00-0250-004	REV R1



TINEL-LOCK TERMINATION
 FIGURE A 1

NOTES:

1 BRAID TERMINATION RING MAY BE SUPPLIED AS TINEL-LOCK SHAPE MEMORY RING AT MANUFACTURER'S OPTION, REFER TO CH00-0250-008 SHEET 4 OF 8 FOR DETAILS.

ENTRY SIZE	Z ±.020 [±0.51]	Y MIN
03	.187 [4.75]	.393 [9.98]
04	.250 [6.35]	.456 [11.58]
05	.312 [7.92]	.515 [13.08]
06	.375 [9.53]	.581 [14.76]
07	.438 [11.13]	.643 [16.33]
08	.500 [12.70]	.705 [17.91]
09	.562 [14.27]	.705 [17.91]
10	.625 [15.88]	.831 [21.11]
11	.688 [17.48]	.893 [22.68]
12	.750 [19.05]	.953 [24.21]
13	.812 [20.62]	.953 [24.21]
14	.875 [22.23]	1.081 [27.46]
15	.938 [23.83]	1.143 [29.03]
16	1.000 [25.40]	1.205 [30.61]
18	1.125 [28.58]	1.381 [35.08]
20	1.250 [31.75]	1.506 [38.25]
22	1.375 [34.93]	1.631 [41.43]
24	1.500 [38.10]	1.756 [44.60]

Raychem Adapters
 PRODUCTION SPECIFICATION



DO NOT
 SCALE THIS
 DRAWING

SIZE
 A

CAGE
 06090

SHEET
 4 OF 8

DWG. NO.

CH00-0250-004

REV
 R1

FIGURE 1
GROUNDING SCREW
(SOLID AND SPIN
COUPLING ADAPTERS
ONLY)

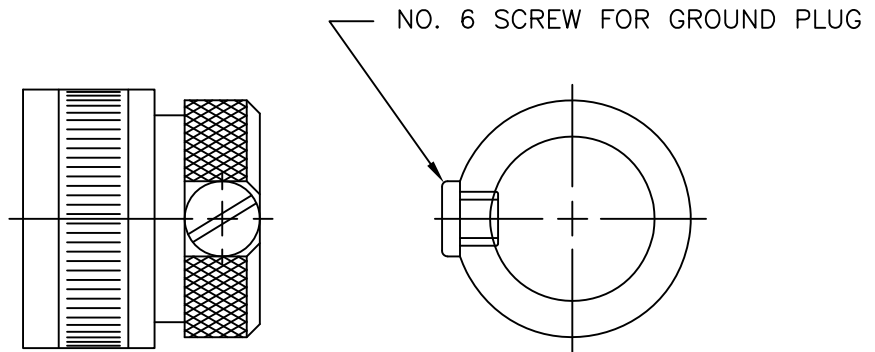


FIGURE 2
STRAIN RELIEF HOLES
(SOLID AND SPIN COUPLING
ADAPTERS ONLY)

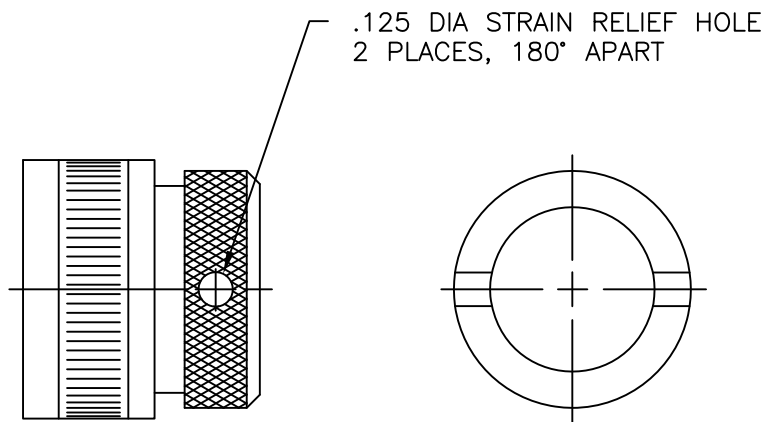
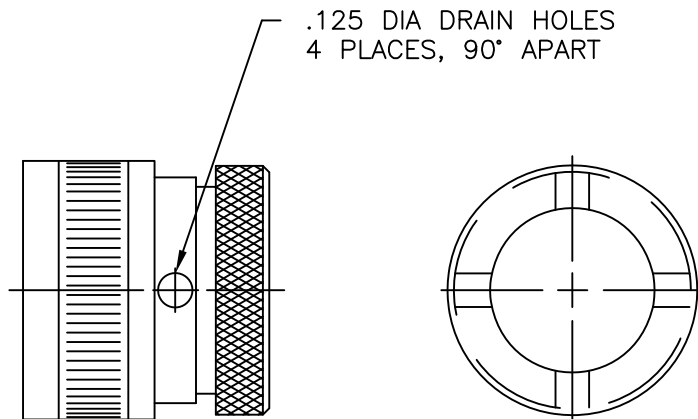


FIGURE 3
DRAIN HOLES
(SPIN COUPLING
ADAPTERS ONLY)



Raychem Adapters
PRODUCTION SPECIFICATION



DO NOT
SCALE THIS
DRAWING

SIZE
A

CAGE
06090

SHEET
5 OF 8

DWG. NO.

CH00-0250-004

REV
R1

FIGURE 4
 LOCK WIRE HOLES
 (SPIN COUPLING AND
 MAGNEFORM ADAPTERS
 ONLY)

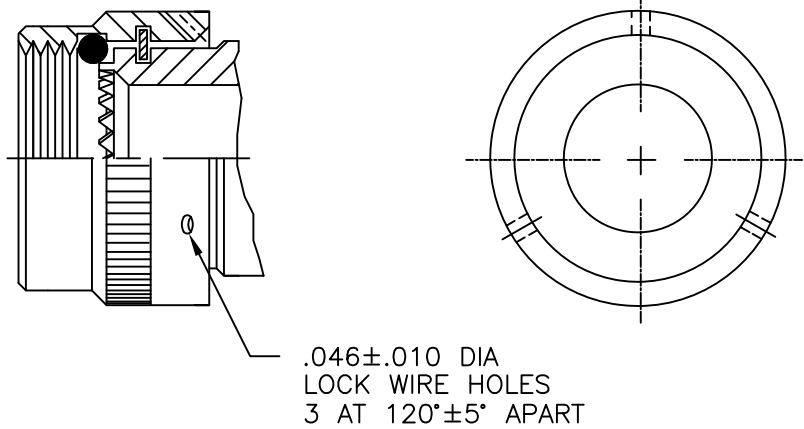
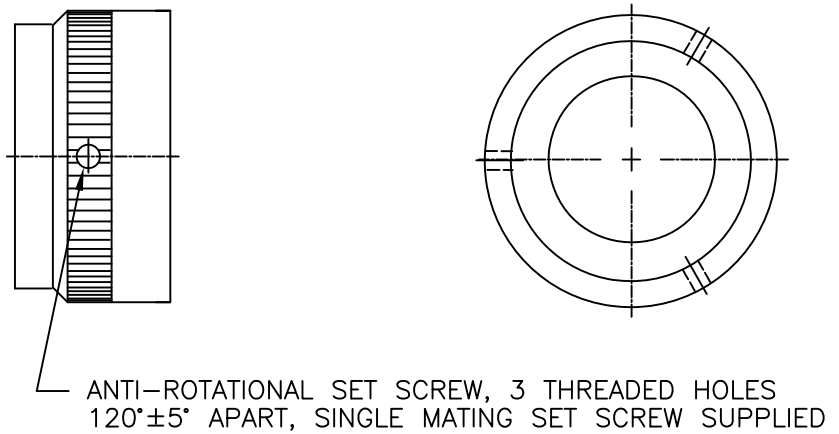


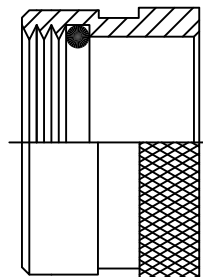
FIGURE 5
 SET SCREW
 (SPIN COUPLING AND
 SHIELDED ADAPTERS
 ONLY)



NOTES:

1. REQUIRED FOR CONNECTOR CODES 15, 18, 19, 32, 21, 51, 52.
2. THREE TAPPED HOLES IN COUPLING RING, ONE SET SCREW SUPPLIED.

FIGURE 6
 SOLID ADAPTER
 (WITHOUT INTERFACE
 COMPRESSION RING)



Raychem Adapters
 PRODUCTION SPECIFICATION

	DO NOT SCALE THIS DRAWING	SIZE	CAGE	SHEET	DWG. NO.	REV
		A	06090	6 OF 8	CH00-0250-004	R1

ROSS COURTNEY TAG
NO. 164 (.075±.005 [1,9±0,13])

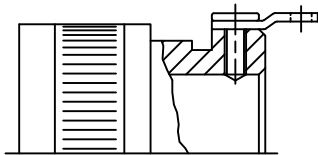
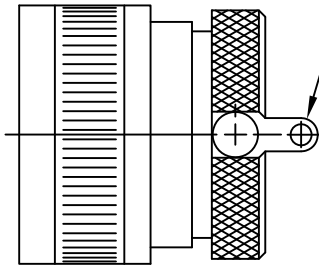


FIGURE 7
"ET" MODIFICATION

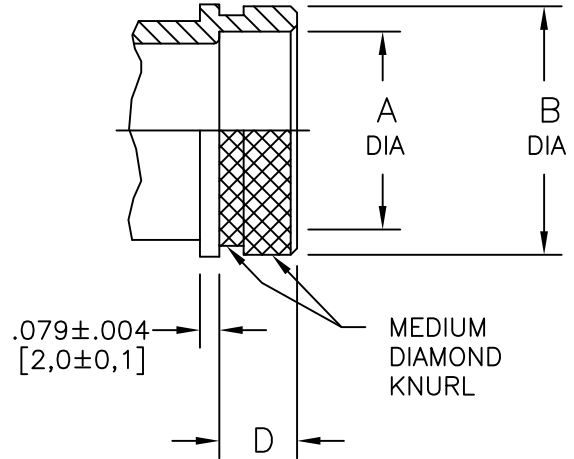


FIGURE 8
"KNS" MODIFICATION

ENTRY SIZE	øA ±.004 [±0,1]	øB MAX	D ±.004 [±0,1]
03, 04	.252 [6,4]	.472 [12,0]	.472 [12,00]
05, 06	.374 [9,5]	.610 [15,5]	.472 [12,00]
07, 08, 09	.563 [14,3]	.787 [20,0]	.413 [10,50]
10, 11, 12	.748 [19,0]	.965 [24,5]	.512 [13,00]
13, 14, 15	.937 [23,8]	1.220 [31,0]	.591 [15,00]
16, 18, 20	1.252 [31,8]	1.516 [38,5]	.669 [17,00]
22, 24	1.614 [41,0]	1.909 [48,5]	.807 [20,5]

Raychem Adapters
PRODUCTION SPECIFICATION



DO NOT
SCALE THIS
DRAWING

SIZE
A

CAGE
06090

SHEET
7 OF 8

DWG. NO.

CH00-0250-004

REV
R1

ALIGNMENT REQUIREMENT

FIGURE 9

APPLIES TO CODES
54, 40 AND 41

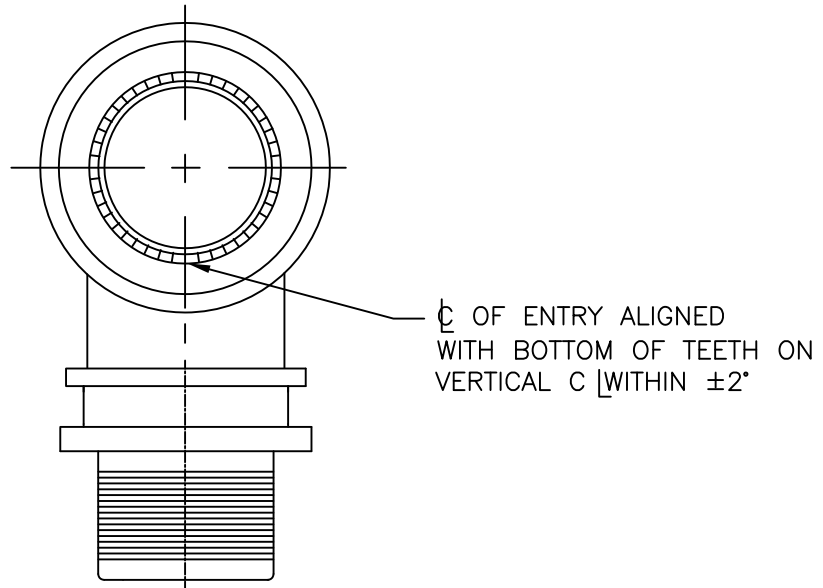
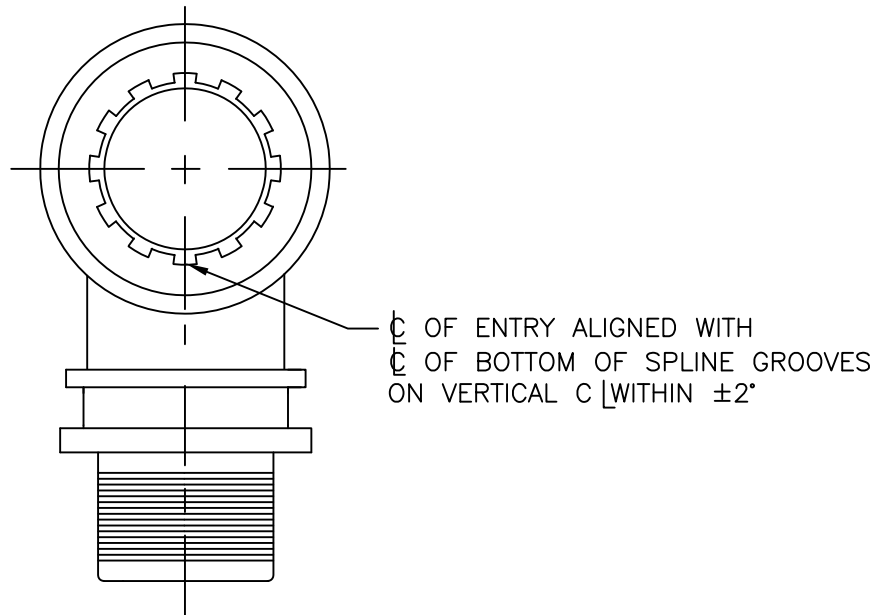


FIGURE 10


APPLIES TO CODES
61 AND 30



NOTES:

1. 90° CONFIGURATION DEPICTED. THIS REQUIREMENT WILL APPLY TO ANY ANGULAR CONFIGURATION.

Raychem Adapters
PRODUCTION SPECIFICATION

	DO NOT SCALE THIS DRAWING	SIZE	CAGE	SHEET	DWG. NO.	REV
		A	06090	8 OF 8	CH00-0250-004	R1