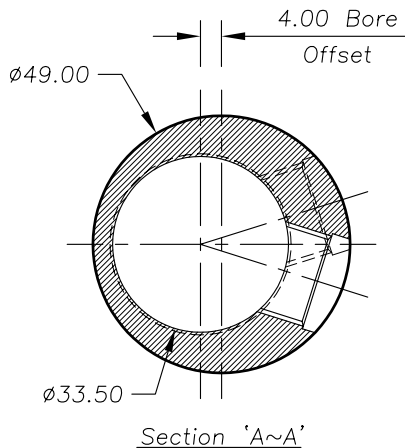
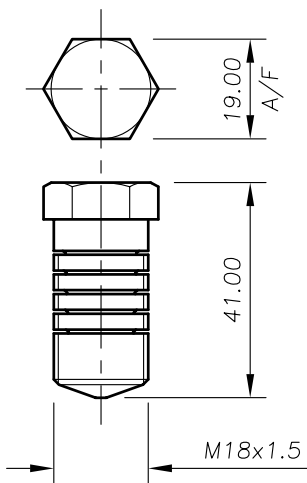


Connector Mid-Bolt

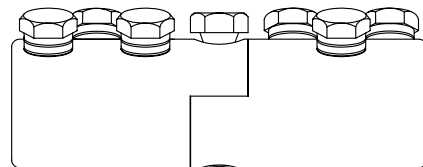


Connector Body

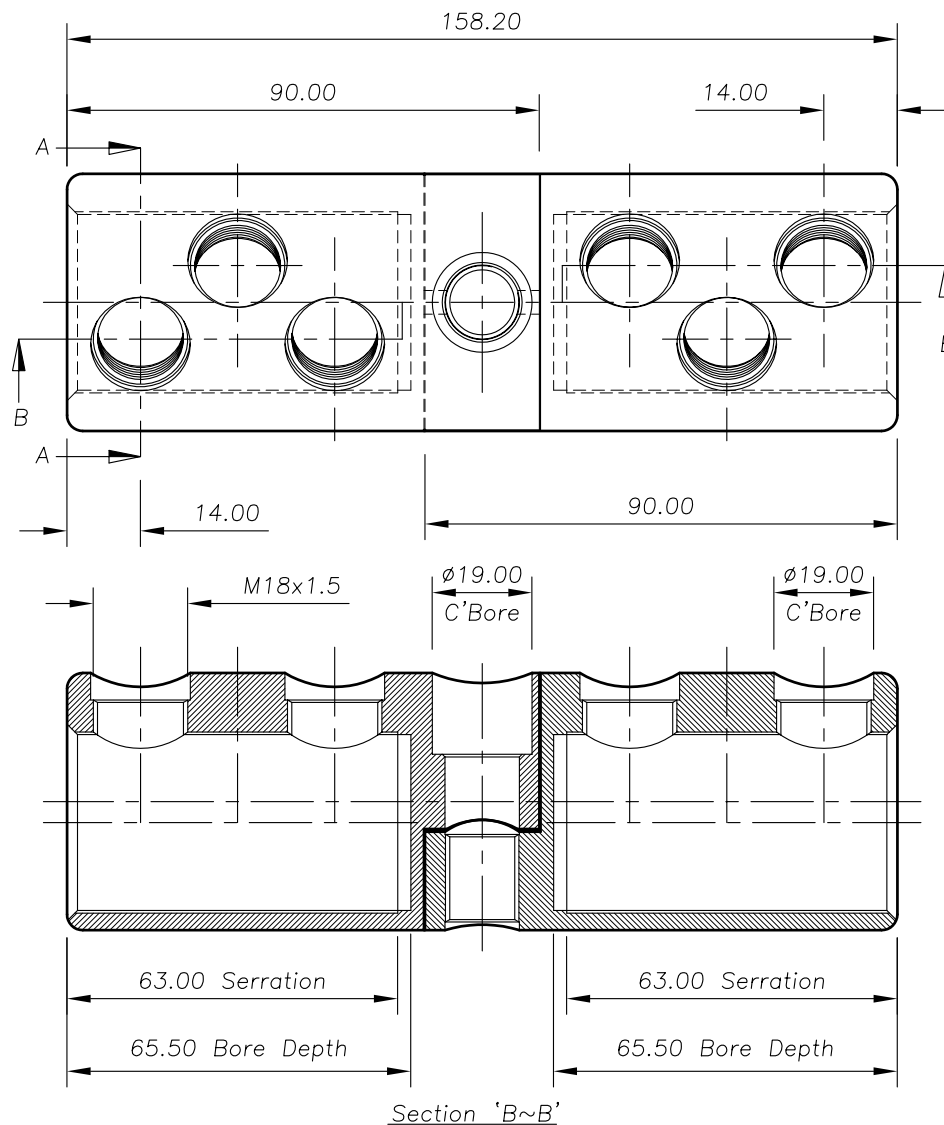
Section 'A~A'



Conductor Clamping Bolt



Assemble Connector as Shown



Section 'B~B'

NOTE 1 : ASSEMBLE MID-BOLT INTO BODIES ENSURING THAT BOTH HALVES OF BODY FIT TOGETHER SECURELY WHEN BOLT IS SCREWED UP HAND TIGHT.

PART/DRG NO.	QTY.	DESCRIPTION
01-211-0072	1	33kV COPPER STRAIGHT VEE TYPE CONNECTOR BODY - 49.0 O/D 33.5 I/D - THREADED HALF
01-211-0071	1	33kV COPPER STRAIGHT VEE TYPE CONNECTOR BODY - 49.0 O/D 33.5 I/D - COUNTERBORED HALF
01-702-0020	1	M14x1.5 19 A/F 58.5 LONG BRASS MID-BOLT
01-701-0010	6	M18x1.5 19 A/F 41.0 LONG BRASS MULTI-SHEAR BOLT

Revision	Description	Name/DMR	Date
F	'NOTE 1' ADDED	BH-00052	25/04/05
E	MID-BOLT PART NUMBER CORRECTED	S.P.W	13.1.03
D	MID-BOLT MATERIAL REVISED	S.P.W	17.6.02
C	PART No WAS VSTC33(ASS), DRG No WAS S17-C01-A02	S.P.W	17.1.02
B	REDRAWN, DRG No WAS 025-001	S.P.W	28.3.01
A	DESCRIPTION No REVISED	E.T	15.9.95

Design/Drawn	Date	Scale	
S.P.WEST	28-Mar-01	2:3	
PCN/RPN No	Checked/Approved by		
060114-000			
Drawing/Part No	Drawing Type		Revision
02-211-0038	ASSEMBLY/CUSTOMER		F

tyco
Electronics
B&H

Tyco Electronics UK Ltd
 Freebournes Road, Witham
 Essex, CM8 3AH, UK.
 Tel: +44 1376 509509
 Fax: +44 1376 509511
<http://energy.tycoelectronics.com>

Material VARIES
 Finish VARIES
 Tolerances (UDS) -
 B&H Short Desc VSTC33UTB

IF IN DOUBT, ASK ! - DO NOT SCALE
 Part Description
 33kV COPPER STRAIGHT VEE TYPE CONNECTOR
 ASSEMBLY - 49.0 O/D 33.5 I/D