

4

3

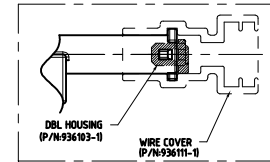
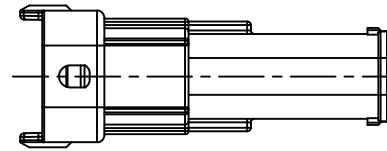
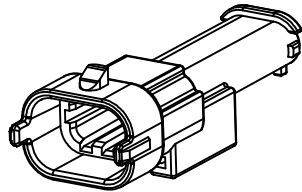
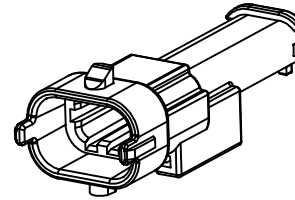
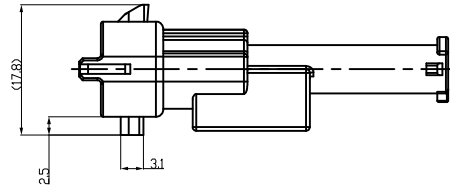
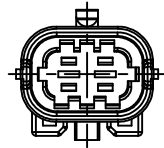
2

1

THIS DRAWING IS UNPUBLISHED. RELEASED FOR PUBLICATION. COPYRIGHT copyright_date - ALL RIGHTS RESERVED.

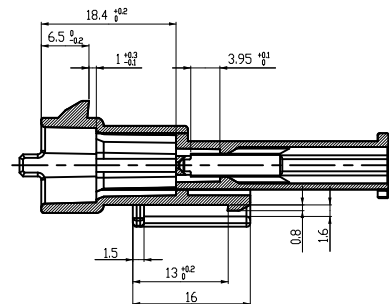
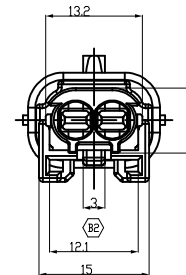
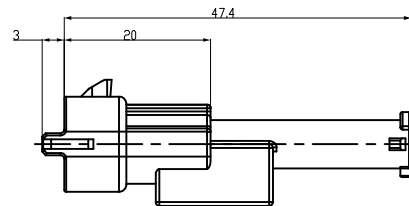
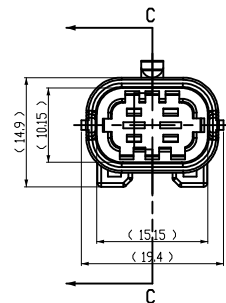
ⓑ CAP HOUSING TYPE B
P/N: 1-936462-2

REVISIONS					
P	LTR	DESCRIPTION	DATE	DWN	APVD
01		REVISED (ECR-05-015312)	10NOV05	IS	JK
A		REVISED (ECR-10-010619)	18MAY10	YM	HG
B		REVISED (ECR-12-011891)	14NOV12	SJ	HG
B1		REVISED (ECR-15-014757)	02DEC15	JM	HG
B2		REVISED (ECR-19-000262)	14MAR19	SK	YJ

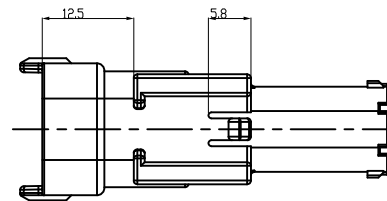


ⓑ TABLE 1

CODE I : 0-936462-2	CODE II : 0-936462-1	CODE III : TBD	CODE IV : TBD
7.64 10.1A-B	5.84 10.1A-B	1.54 3.5	3.54 3.64 1.54
CODE I : 1-936462-2	CODE II T.B.D	CODE III : TBD	CODE IV : TBD
7.64 10.1A-B	5.84 10.1A-B	1.54 3.5	3.54 3.64 1.54



SECTION C-C



NOTE.

1. APPLIED WITH TAB P/N:

PART No.	1-962915-1(Tin), -3(Gold)	1-962916-1(Tin), -3(Gold)
WIRE SIZE(mm)	0.5~1.0	1.0~2.5

2. APPLIED WITH WIRE SEAL P/N:

PART No.	828904	828905
INSULATION DIA(φ)	1.2~2.1mm	2.2~3.0mm

3. BE MATED WITH PLUG HSG (P/N : 936059, 2005308) SMOOTHLY.

ⓑ 1-936462-2	CAP HOUSING	PA66 GF15	BLACK
0-936462-2	CAP HOUSING	PA66 GF15	BLACK
0-936462-1	CAP HOUSING	PA66 GF15	WHITE
PART No.	DESCRIPTION	MATERIAL	COLOR

THIS DRAWING IS A CONTROLLED DOCUMENT.

DIMENSIONS: mm	TOLERANCES UNLESS OTHERWISE SPECIFIED: 0 <XX<10 ± 0.2 10<XX<30 ± 0.25 30<XX ± 0.3 ANGLES ± 3°	DWN: JM_JEDN CHK: JW_JUNG APVD: HG_CHO PRODUCT SPEC: --- APPLICATION SPEC: --- WEIGHT: ---	NAME: --- SIZE: A2 CAGE CODE: 00779 DRAWING NO: 936462 RESTRICTED TO: ---
MATERIAL: SEE TABLE	FINISH: SEE TABLE	CUSTOMER DRAWING	SCALE: 2:1 SHEET: 1 OF 1 REV: B2

TE Connectivity
2.8MM SEALED 2P CAP HSG (FLAT SENSOR)