

4

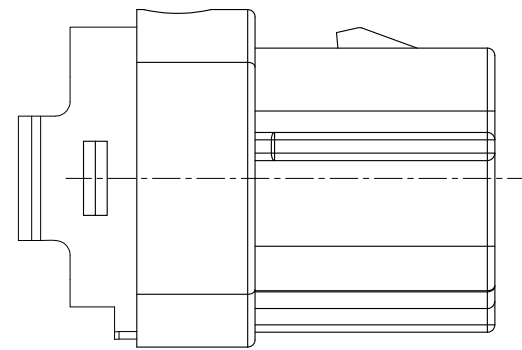
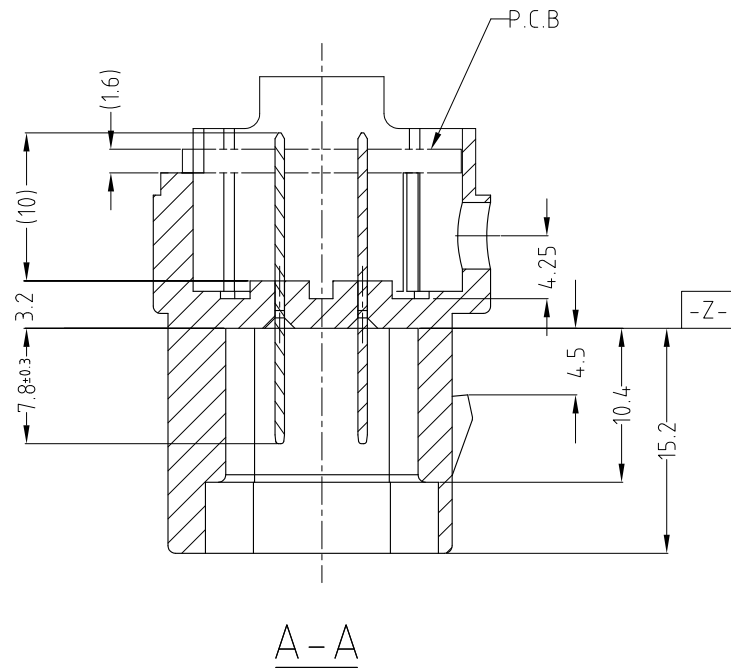
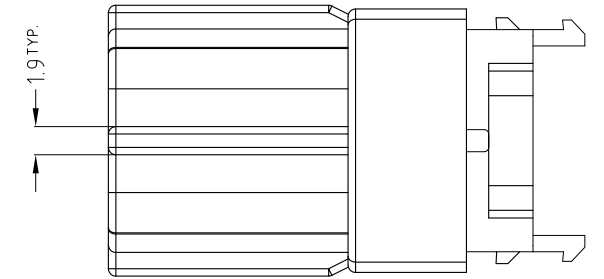
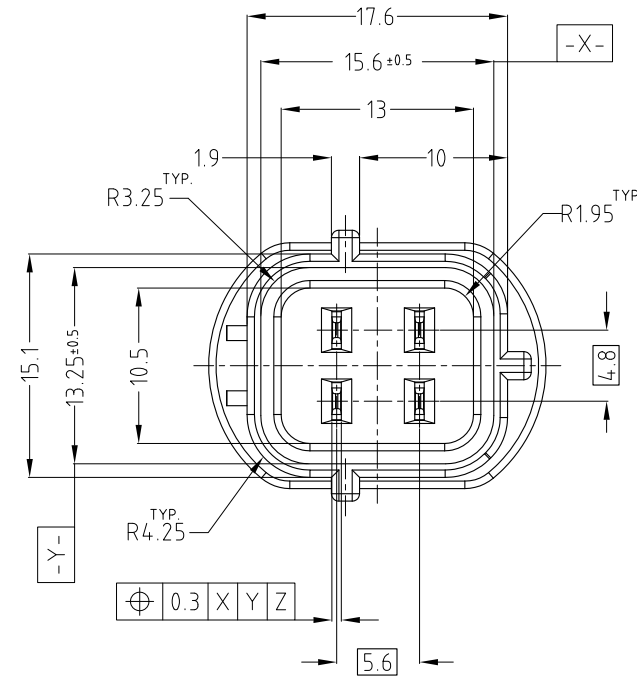
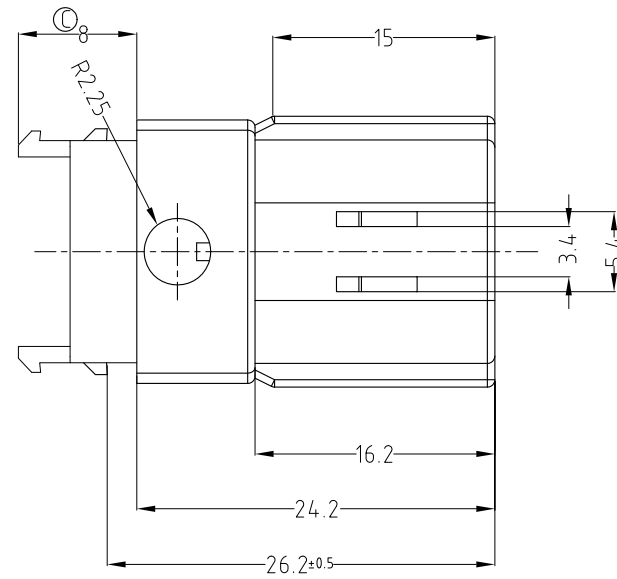
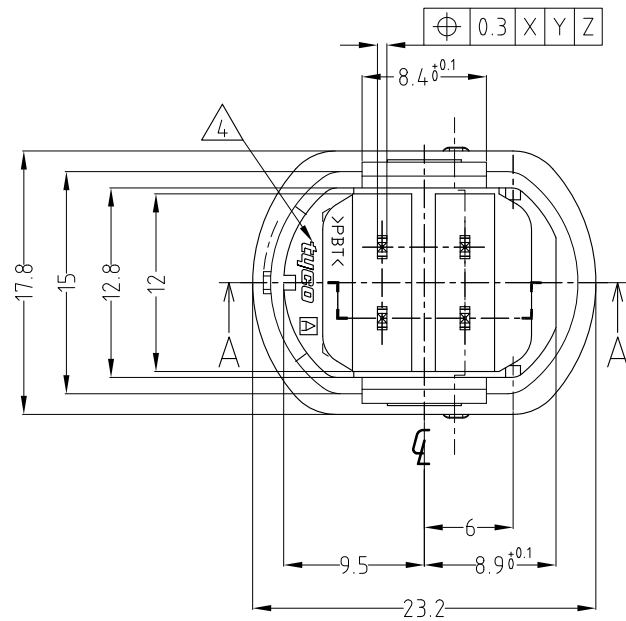
3

2

1

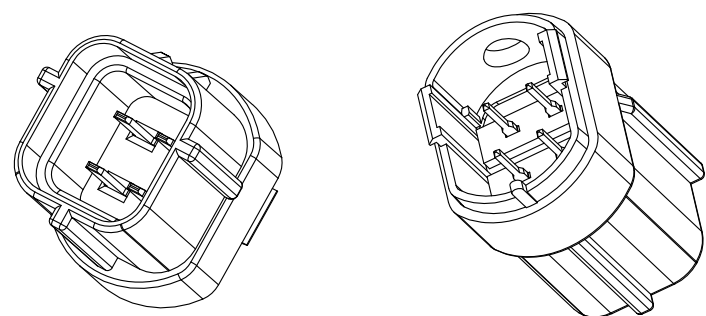
THIS DRAWING IS UNPUBLISHED. RELEASED FOR PUBLICATION
COPYRIGHT BY TYCO ELECTRONICS CORPORATION, ALL RIGHTS RESERVED.

| LOC | DIST | REVISIONS | | | | | |
|-----|------|-----------|-----|-------------------------|------------|-----|------|
| | | P | LTR | DESCRIPTION | DATE | DWN | APVD |
| DS | - | | B | REVISED (ECR-06-026377) | 13,DEC,07 | IS | JK |
| | | | C | REVISED (ECR-09-003100) | 15.APR.'09 | KT | HG |



NOTE.
 1. INCOUPLING WITH TAB P/N 175082
 INITIAL DISENGAGEMENT FORCE 29.4N(3kg)MIN.
 2. BE MATED WITH PLUG HSG (P/N : 174257, 368123) SMOOTHLY.

| NO. | COLOR /FINISH | MATERIAL | DESCRIPTION | P/N | QTY |
|-----|---------------|----------|-------------|------------|-----|
| 2 | PRE-TIN | BRASS | .070 TAB | 0-175082-1 | 4 4 |
| 1 | GRAY | PBT | CAP HSG 4P | 0-936419-3 | 1 |
| | BLACK | PBT | CAP HSG 4P | 0-936419-2 | 1 |



| | | | |
|----------------|--------|---|--|
| DIMENSIONS: MM | | TOLERANCES UNLESS OTHERWISE SPECIFIED: | |
| | | 0 <XX<10 ± 0.2 10<XX<30 ± 0.25 30<XX ± 0.3 ANGLES ± 3° | |
| MATERIAL | FINISH | | |

THIS DRAWING IS A CONTROLLED DOCUMENT FOR TYCO ELECTRONICS CORPORATION IT IS SUBJECT TO CHANGE AND THE CONTROLLING ENGINEERING ORGANIZATION SHOULD BE CONTACTED FOR THE LATEST REVISION.

DWN: KT JUNG
 CHK: JW JUNG
 APVD: HG CHD
 PRODUCT SPEC: -
 APPLICATION SPEC: -
 WEIGHT: -

Tyco Electronics AMP KOREA, Kyungsan, Korea

NAME: CAP ASSEMBLY FOR BACK WARNING SENSOR 4Pos. (.070 SEALED TYPE)

SIZE: A3 CAGE CODE: 00779 DRAWING NO: 936418 RESTRICTED TO: -

CUSTOMER DRAWING SCALE: 2/1 SHEET: 1 OF 1 REV: C