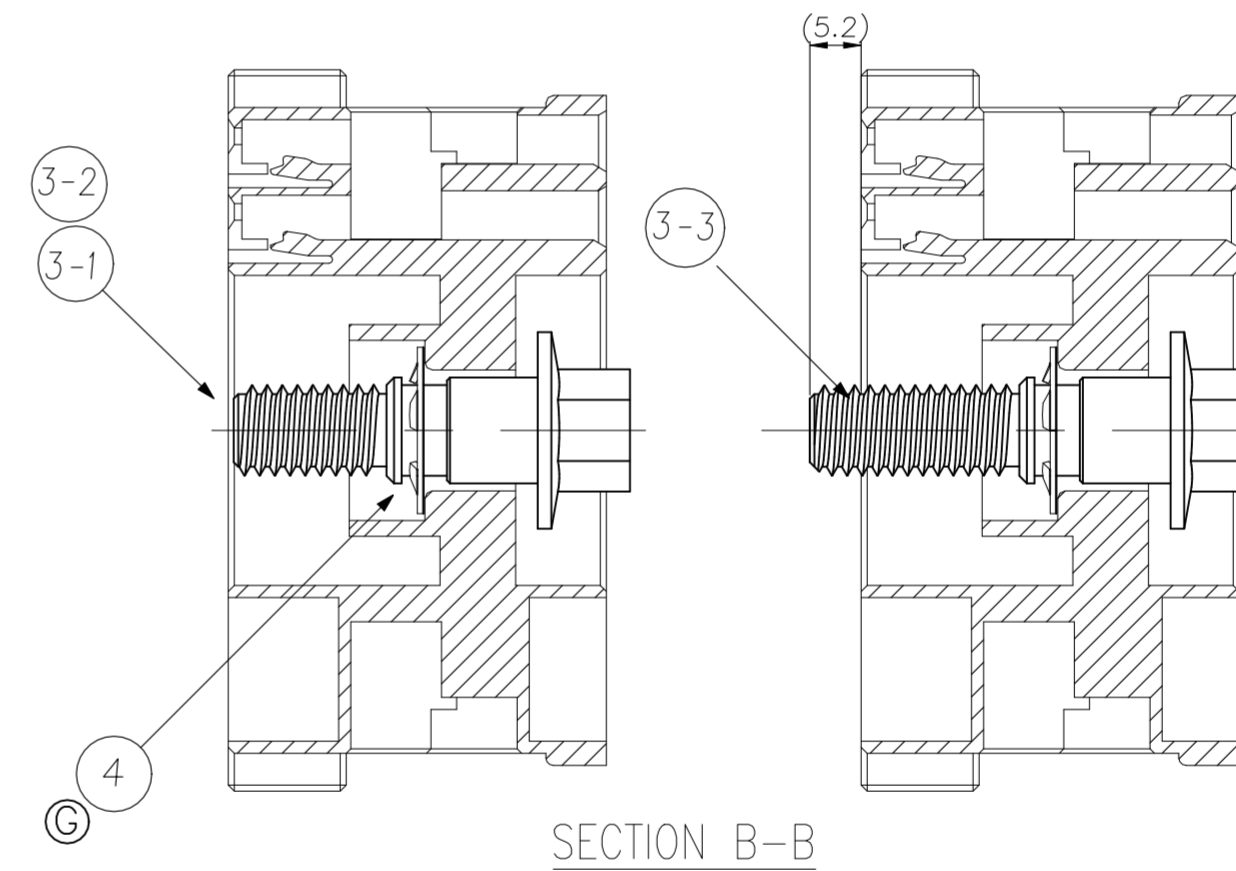
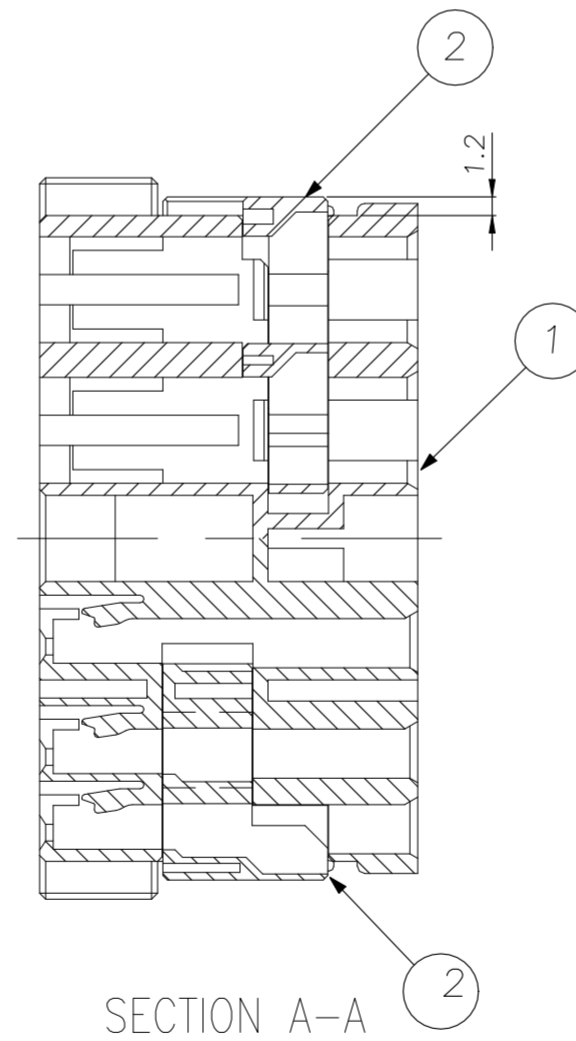
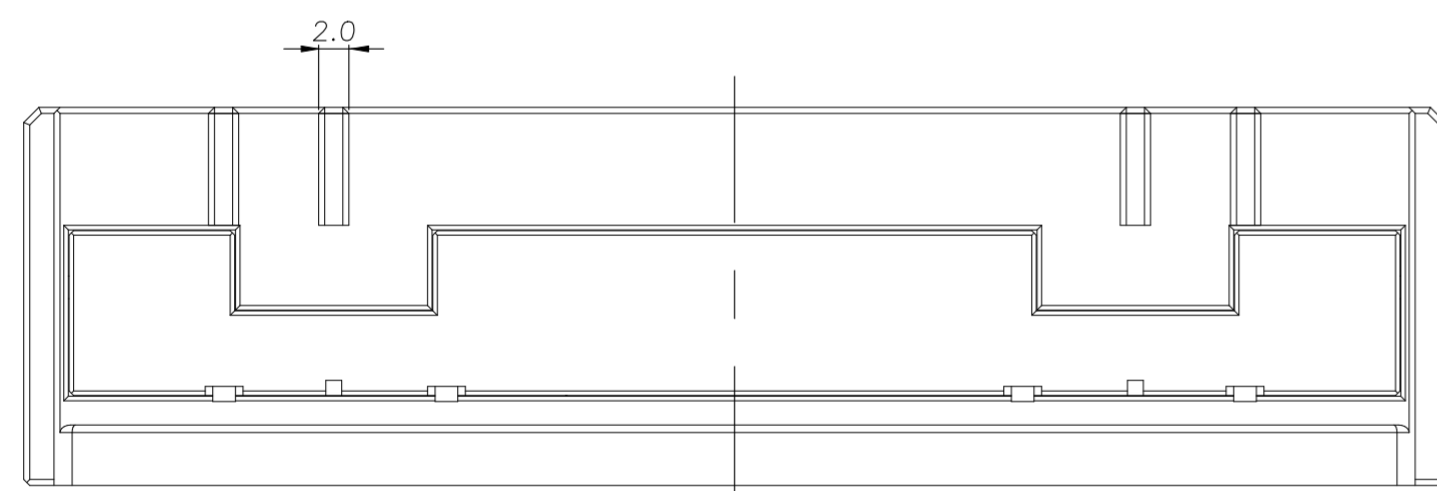
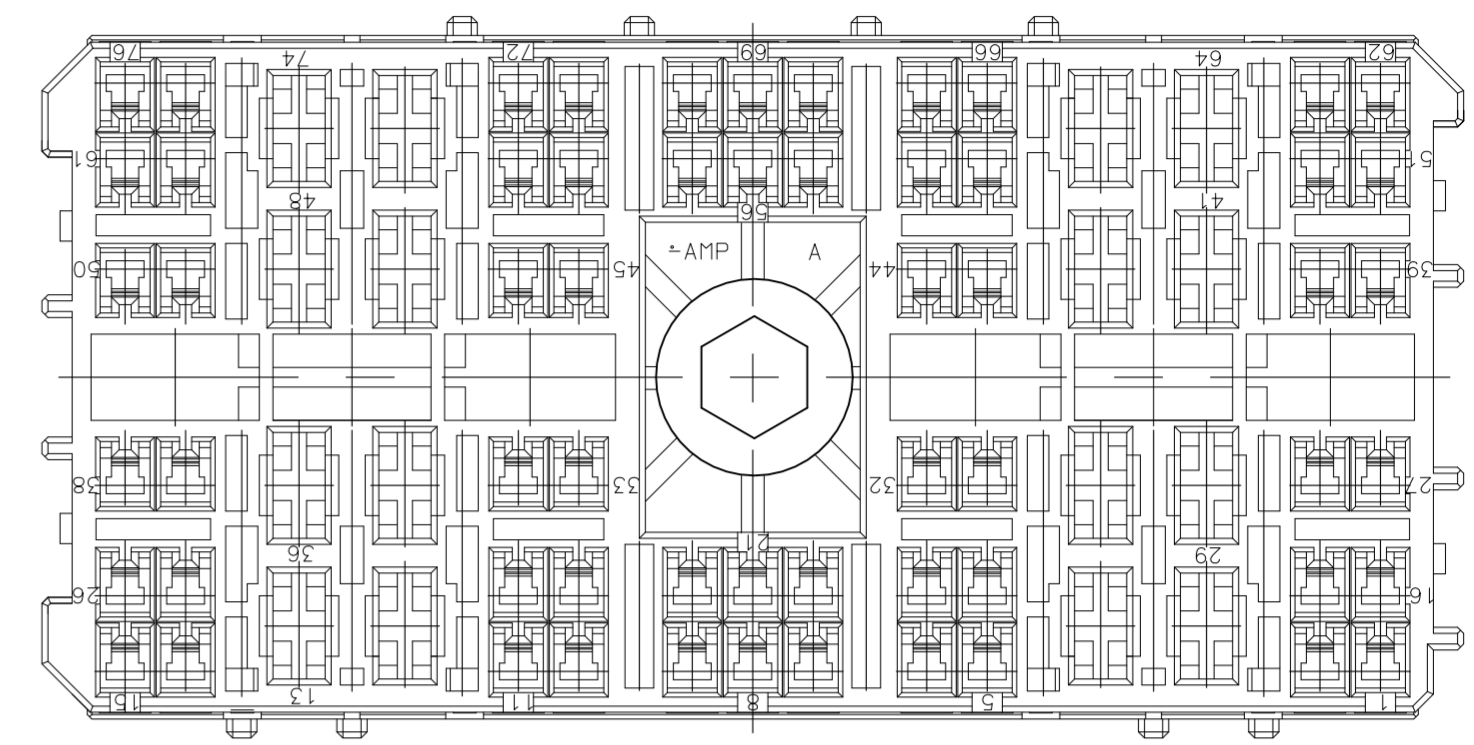
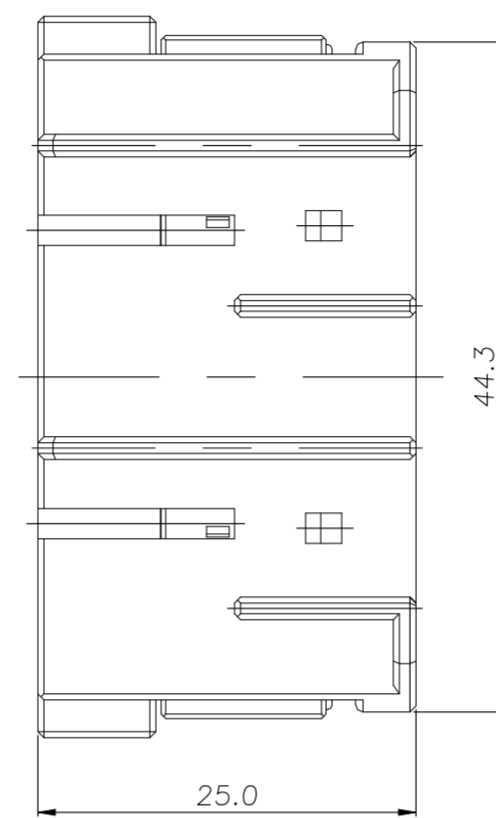
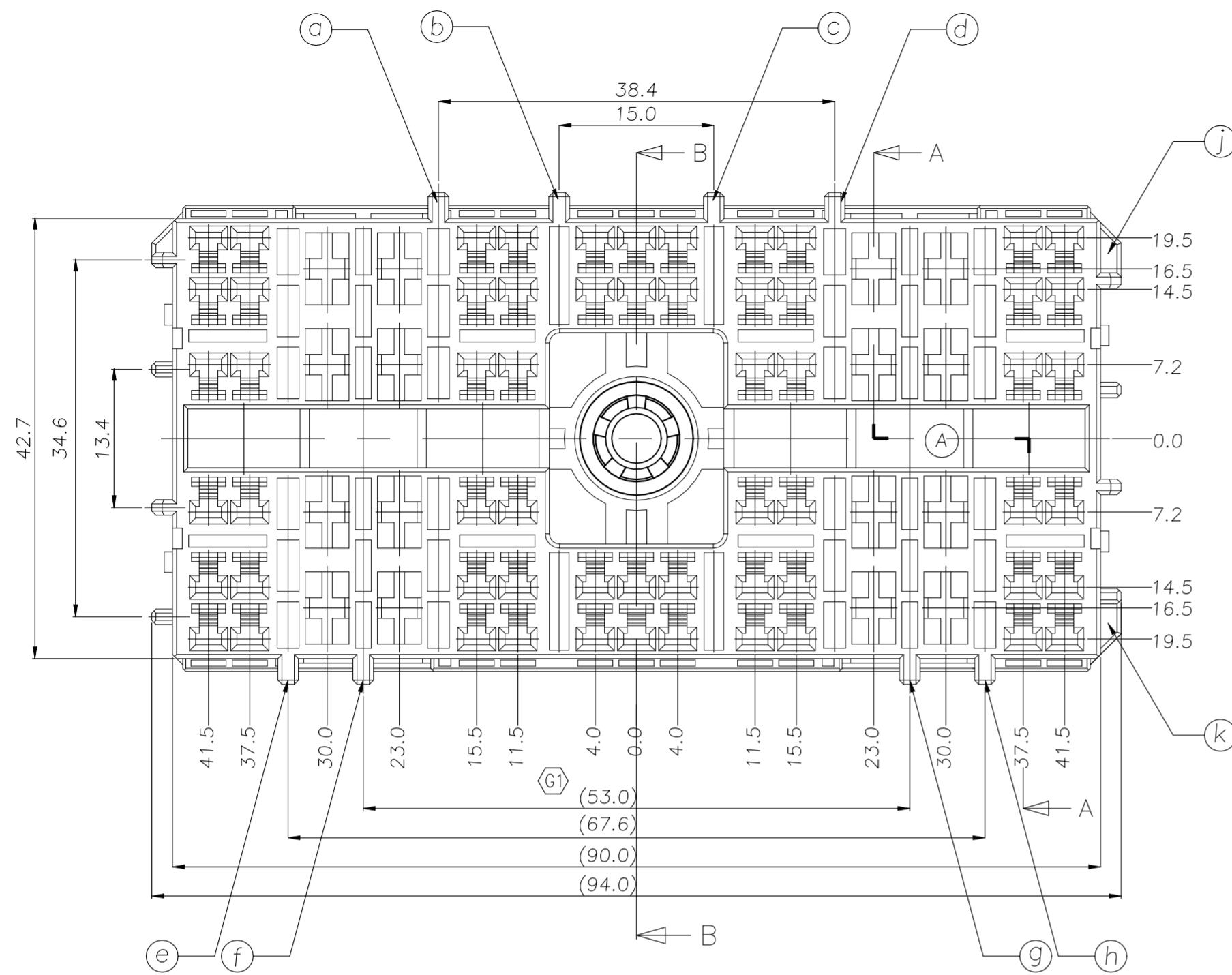


REVISIONS						
P	LTR	DESCRIPTION	DATE	DWN	APVD	
C3		REVISED PER ECR-23-177343	19MAY2023	RK	JT	



NOTES.

- APPLIED CONTACT P/N ;  
090 II - 368083, 368084, 368085  
090 III - 1743654, 1743655, 1743656  
S.P.T - 927839, 927827, 927833, 927824

- BOLT TORQUE: 1.0kgf.m MAX

⚠ OBSOLETE

TOLERANCES UNLESS OTHERWISE SPECIFIED:	
0 <XX<10	± 0.2
10<XX<30	± 0.25
30<XX	± 0.3
ANGLES	± 3°

P/N	ⓐ	ⓑ	ⓒ	ⓓ	ⓔ	ⓕ	ⓖ	ⓗ	ⓓ	ⓖ	ⓗ	ⓓ	ⓖ	ⓗ	REMARK
1-936068-4	○			○	○				○	○					BROWN
936068-3		○	○						○	○					GRAY
936068-1		○							○	○					BLACK
P/N	ⓐ	ⓑ	ⓒ	ⓓ	ⓔ	ⓕ	ⓖ	ⓗ	ⓓ	ⓖ	ⓗ	ⓓ	ⓖ	ⓗ	REMARK

© KEY CODE

NO	P/N	DESCRIPTION	MATERIAL	COLOR	Q'TY					
4	2005633-1	PUSH NUT(NEW)	SUS 304(3/4H)	-	1	1	1	1	1	1
3-3	936826-2	BOLT(7mm)	SWCH10A	-	1	1	1	-	-	-
3-2	1-936826-1	BOLT(8mm)	SWCH10A	-	-	-	-	1	-	-
3-1	936826-1	BOLT(7mm)	SWCH10A	-	-	-	-	-	1	1
2	936069-1	DBL HSG	PBT	YELLOW	2	2	2	2	2	2
1	1-936068-4	76P PLUG HSG	PBT	BROWN	1	-	-	-	-	-
	936068-3	76P PLUG HSG	PBT	GRAY	-	1	-	-	1	-
	936068-1	76P PLUG HSG	PBT	BLACK	-	-	1	1	-	1

THIS DRAWING IS A CONTROLLED DOCUMENT.

DIMENSIONS:	TOLERANCES UNLESS OTHERWISE SPECIFIED:
mm	
0 PLC	± -
1 PLC	± -
2 PLC	± -
3 PLC	± -
4 PLC	± -
ANGLES	± -
MATERIAL	FINISH
SEE TABLE	SEE TABLE

DWN	SH LEE														
CHK	YJ YOUN														
APVD	JK SONG														
PRODUCT SPEC															
APPLICATION SPEC															
WEIGHT	-														
CUSTOMER DRAWING															



090/SPT HYB 76P PLUG ASS'Y (BOLT TYPE)

SIZE	CAGE CODE	DRAWING NO	RESTRICTED TO
A2	00779	C=936195	-

SCALE	SHEET	REV
2:1	1 of 1	C3