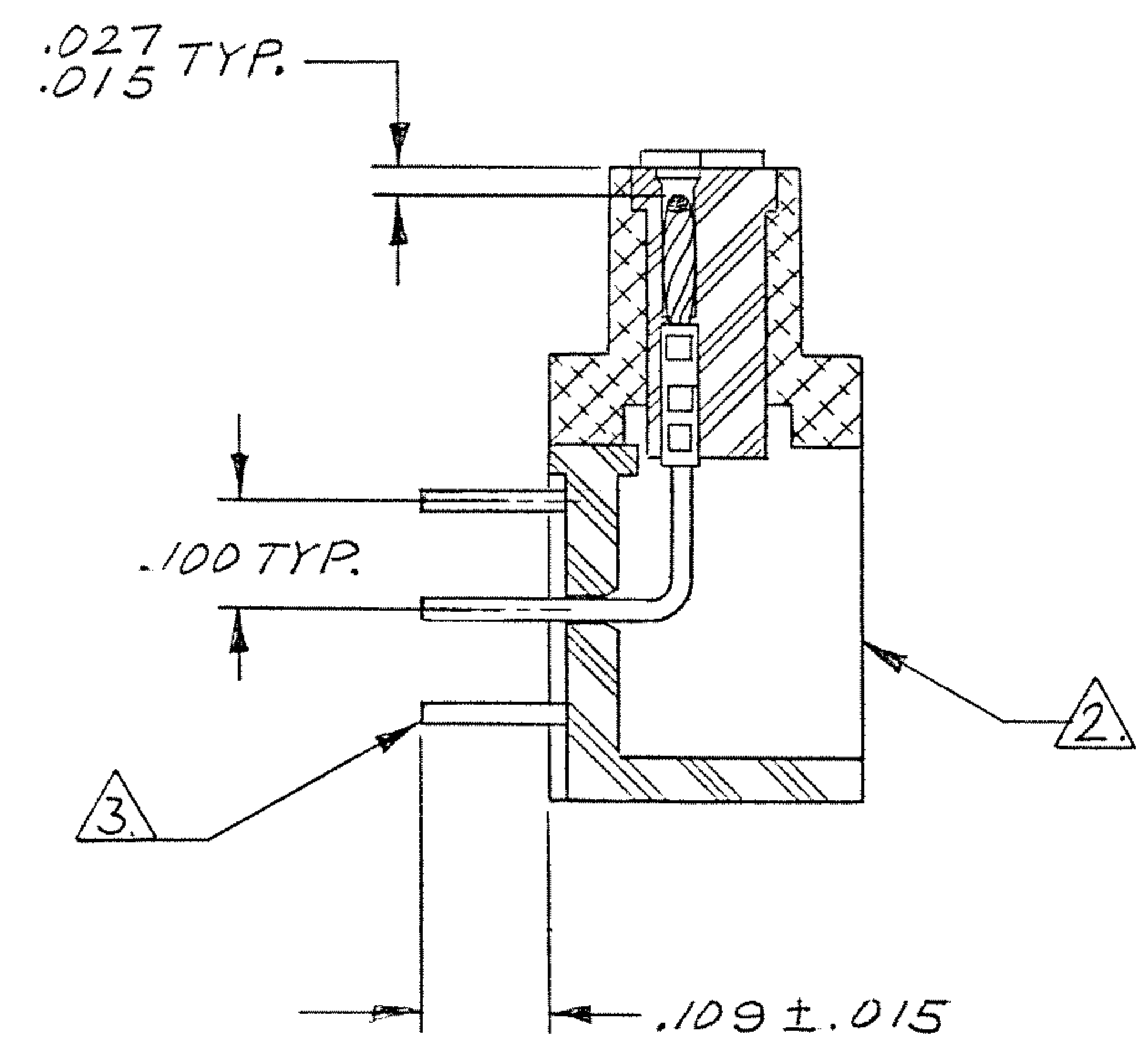
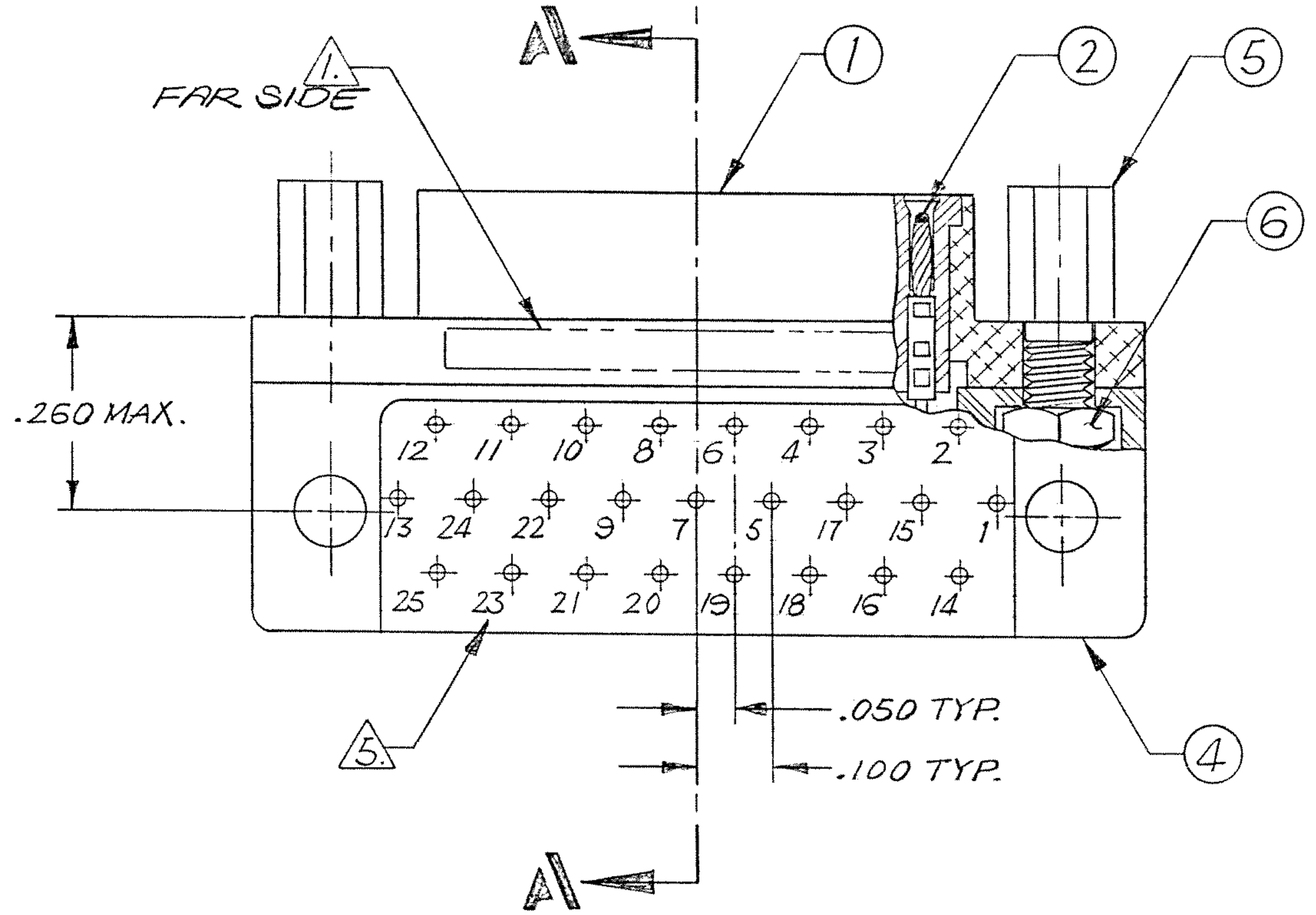
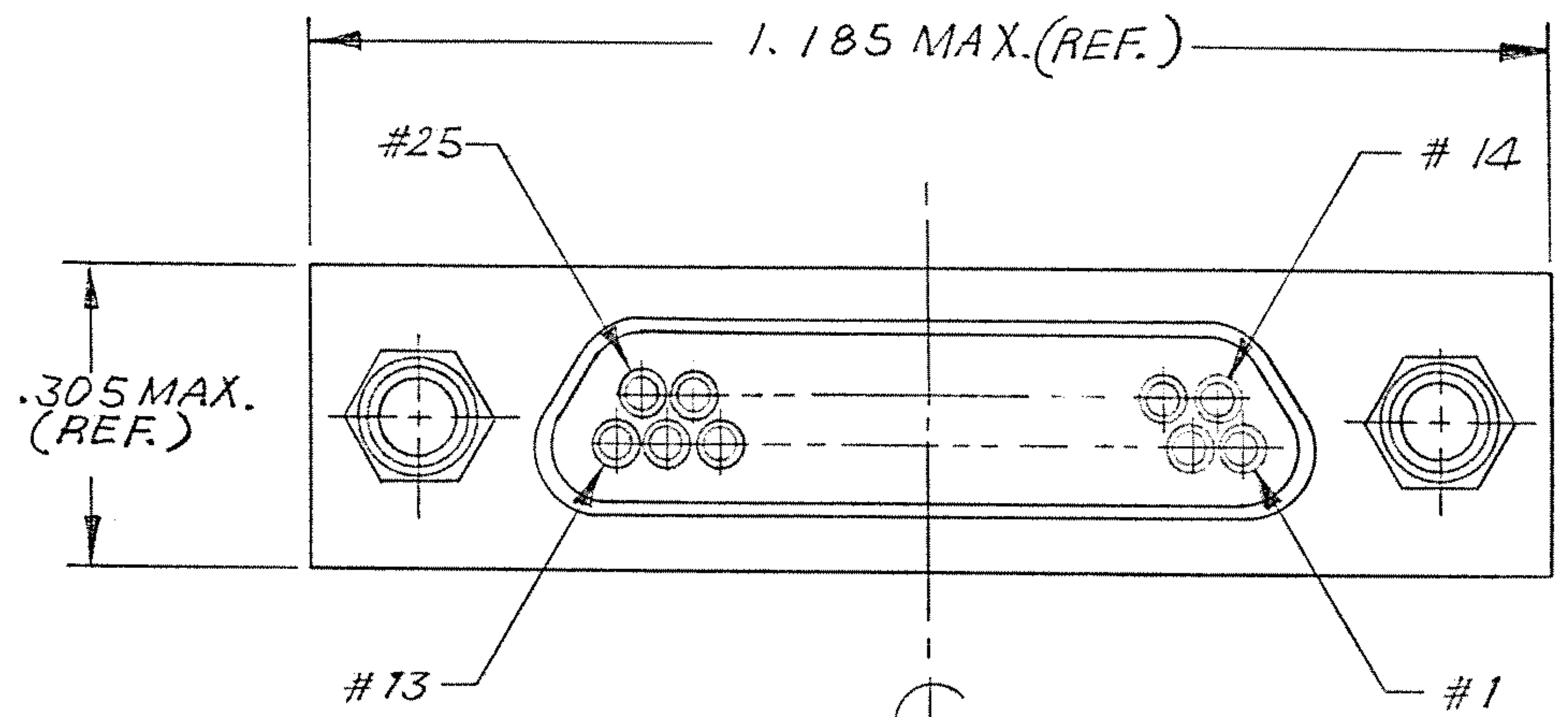


REVISIONS					
ZONE	LTR	DESCRIPTION	DATE	ENG	APPROVED
	B1	Update Per ECO-11-016360	8/10/11	PJS	CEP



SECTION A-A

NOTES: UNLESS OTHERWISE SPECIFIED.

1. MARKINGS: MARK OPPOSITE SIDE PER MEP 203-12
2. ASSEMBLE ALL ITEMS (ITEM #1 THRU #6), THEN FILL WITH EPOXY AROUND HEX NUT & T.B. BLDCK BACKPOTTING AS SHOWN. USE HYSOL #4215 & #3561.
3. TERMINAL WIRES TO BE SOLDER COATED .003 MAX. (PER SIDE) IN LOCATION SHOWN. SOLDER TO BE BR-S-571, TYPE Sn63, FLUX PER MIL-F-14256, TYPE A.
4. CRIMP LEADS INTO CONTACTS PER MEP 302-05.
5. TERMINAL IDENT NOS AS SHOWN (VIEWED FROM THE MOUNTING SURFACE) DO NOT ACTUALLY APPEAR ON THE PART (FOR IDENTIFICATION ONLY)

APPLICATION	USED ON

QTY REQD	CODE IDENT	PART OR IDENTIFYING NO.	NOMENCLATURE OR DESCRIPTION	
PARTS LIST				
UNLESS OTHERWISE SPECIFIED DIMENSIONS ARE IN INCHES TOLERANCES ARE:		CONTRACT NO.		
FRACTIONS ±	DECIMALS .XX ±	ANGLES ±	APPROVALS	
	.XXX ± .005		DATE	
MATERIAL		DRAWN Yang CHU 3/12/84		
FINISH		CHECKED [Signature] 4/11/84		
NEXT ASSY		PR. ENG. [Signature] 4-13-84		
USED ON		APPD.		
APPLICATION		<div style="display: flex; justify-content: space-between;"> <div> <p>These drawings and specifications are the property of Microdot Inc., are issued in strict confidence and shall not be divulged, be reproduced or copied, or used as the basis for the manufacture or sale of any article without written permission of Microdot Inc.</p> </div> <div> <p><b>STE</b> TE Connectivity</p> <p>METAL SHELL 90° LD - PROFILE CONNECTOR (MIL-C-83513/ )</p> <p>MCK-**-P-25 L(P) RT1 (WI JACKPOST) 094-4404-7000</p> </div> <div> <p>PROD. CODE 845</p> <p>CODE M</p> </div> </div>		
			SIZE C	CODE IDENT NO. 98278
				DRAWING NO. 9-1532141-6
			SCALE ~	SHEET / OF /