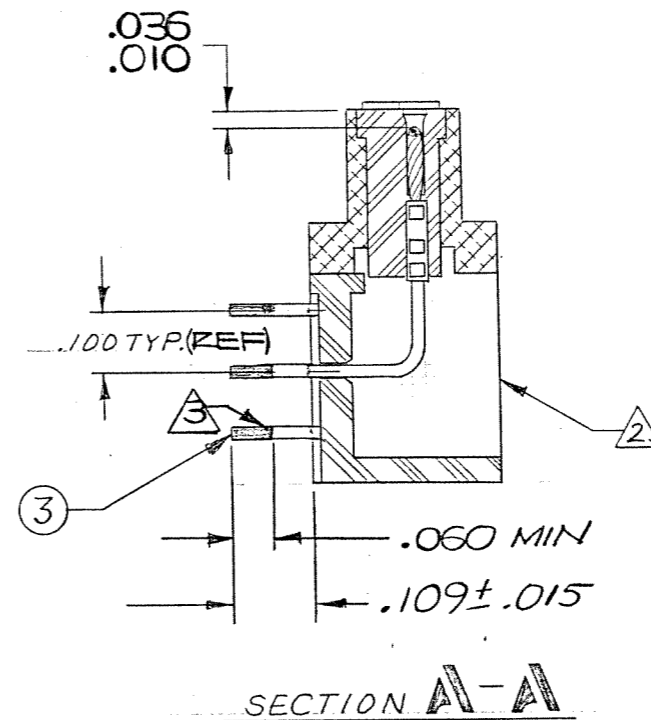
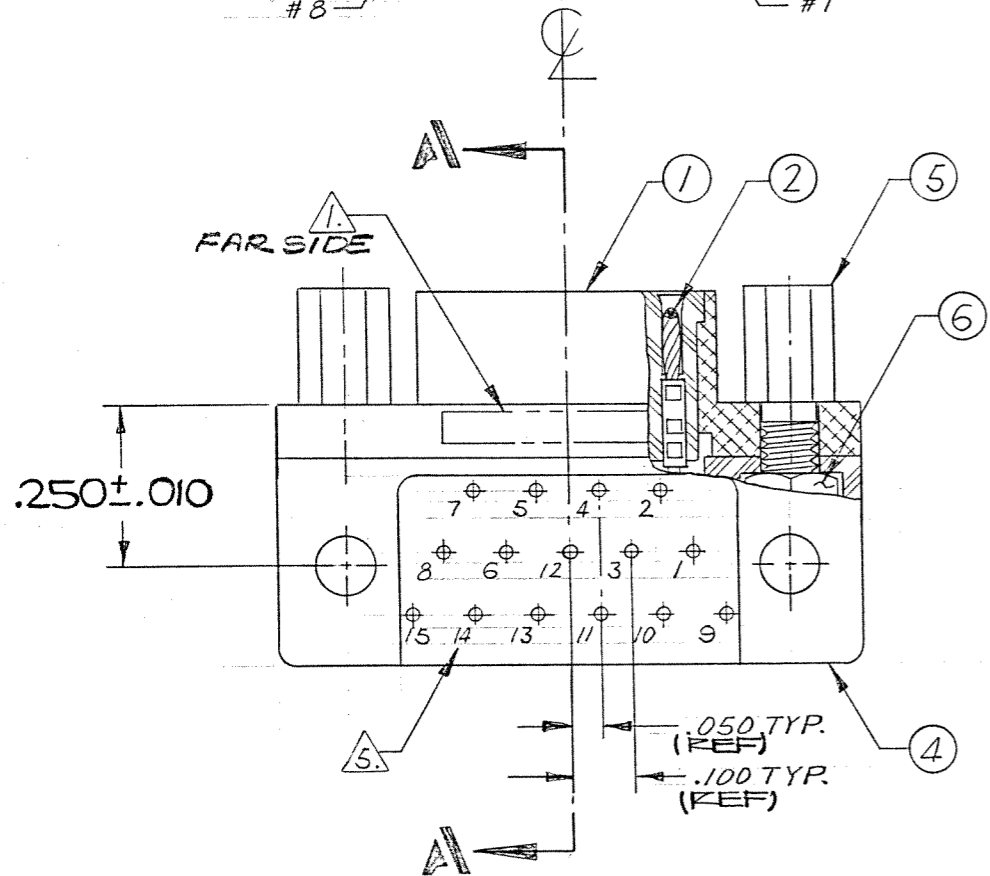
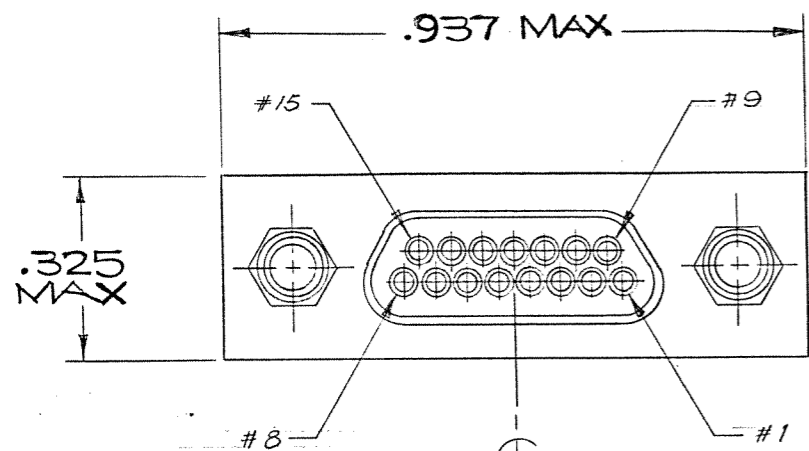


REVISIONS

ZONE	LTR	ECN	DESCRIPTION	DATE	APPROVED
	A	28677	RELEASE FOR PRODUCTION F.C	4-16-84	[Signature]
	B	34350	GENERAL UPDATE SEE ECN	10/16/92	[Signature]
	C	34422	GENERAL UPDATE SEE ECN	11/20/92	[Signature]
	D	37265	MKS. UPDATE SEE ECN MD	8/25/97	[Signature]

CAUTION

UNINSULATED WIRES USED IN THIS ASSEMBLY. MUST PASS 600 VOLT "HI-POT" AFTER POTTING



NOTES: UNLESS OTHERWISE SPECIFIED

- 1. MARKING: MARK OPPOSITE SIDE PER MEP203-12
- 2. ASSEMBLE ALL ITEMS (ITEM #1 THRU #6), THEN FILL WITH EPOXY AROUND HEX NUT & T.B. BLOCK BACKPOTTING AS SHOWN. USE HYSOL #4215 & #3561.
- 3. TERMINAL WIRES TO BE SOLDER COATED. SOLDER TO BE QQ-S-571, TYPE Sn 60 OR Sn 63 FLUX PER MIL-F-14256, TYPE A.
- 4. CRIMP LEADS INTO CONTACTS PER MEP 302-05.
- 5. TERMINAL IDENT NOS AS SHOWN (VIEWED FROM THE MOUNTING SURFACE) DO NOT ACTUALLY APPEAR ON THE PART (FOR IDENTIFICATION ONLY).
- 6. _____

9-1532141-0

QTY REQD	CODE IDENT	PART OR IDENTIFYING NO.	NOMENCLATURE OR DESCRIPTION
PARTS LIST			
UNLESS OTHERWISE SPECIFIED DIMENSIONS ARE IN INCHES TOLERANCES ARE:		CONTRACT NO.	MALCO A MICRODOT COMPANY, INC. 220 PASADENA AVE., SO. PASADENA, CALIF. 91030
FRACTIONS DECIMALS ANGLES ± .XX ± °		APPROVALS DATE	
MATERIAL		DRAWN <i>YONG CHU</i> 3/21/84 CHECKED <i>[Signature]</i> 4/1/84 PR. ENG. <i>[Signature]</i> APPD.	METAL SHELL 90° LD-PROFILE CONNECTOR (MIL-C-83 513) MCK-**-P-15L RT1 (WITH JACKPOST)
FINISH		SIZE CODE IDENT NO. DRAWING NO. C 98278 094-4204-7000	PROD. CODE 845 CODE M
NEXT ASSY	USED ON	These drawings and specifications are the property of Microdot Inc. are issued in strict confidence and shall not be divulged, be reproduced or copied or used as the basis for the manufacture or sale of any article without written permission of Microdot Inc.	
APPLICATION		SCALE	SHEET / OF /

DO NOT SCALE DRAWING

SCALE

SHEET / OF /