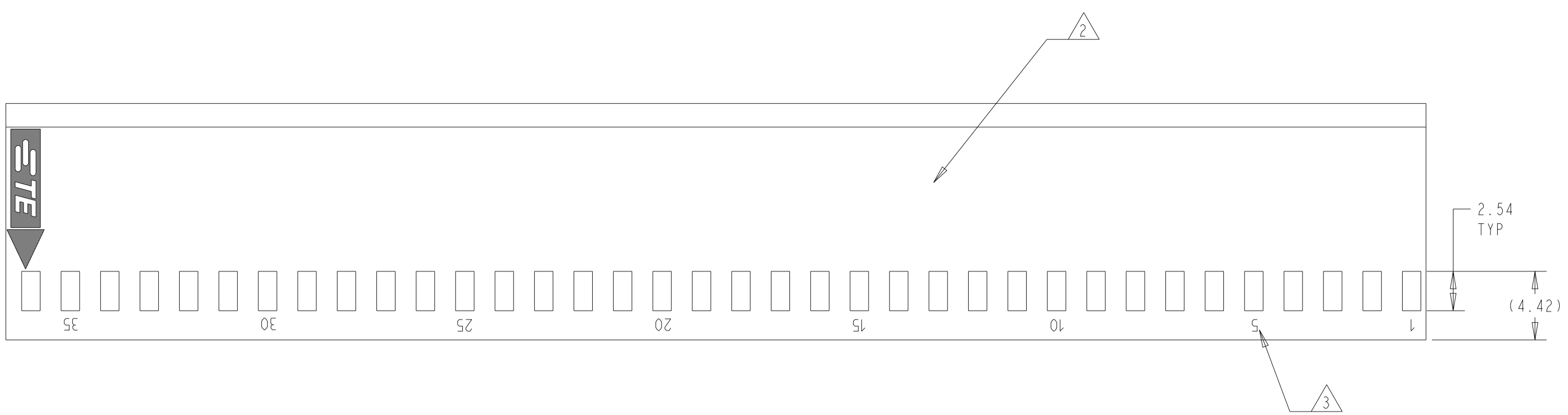
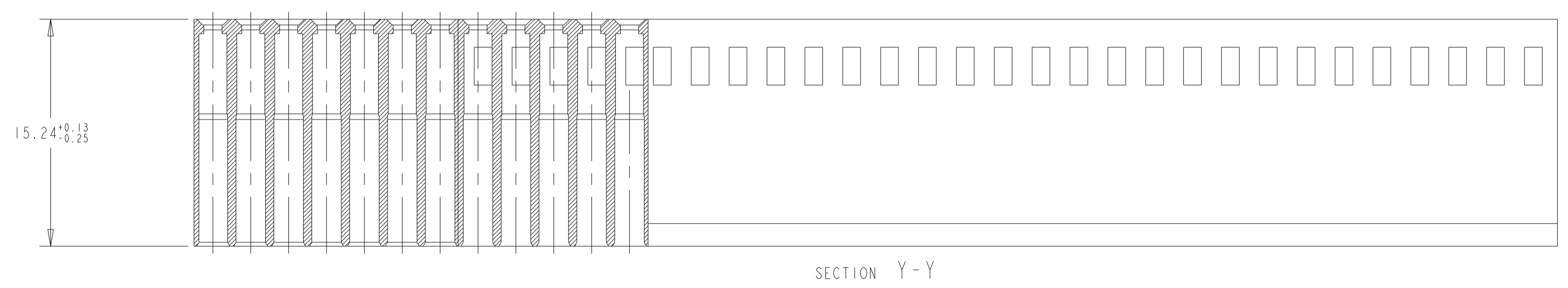
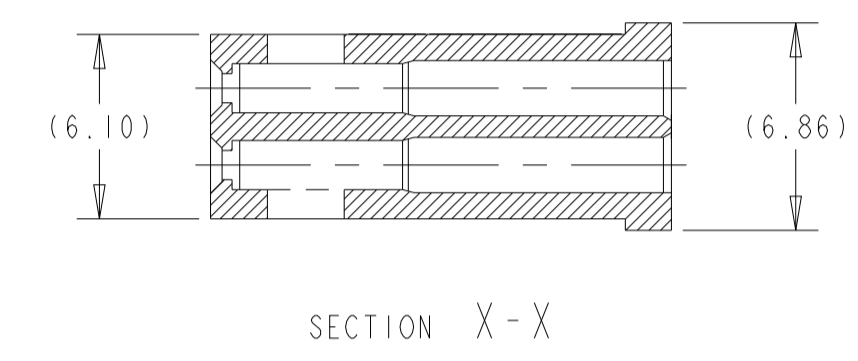
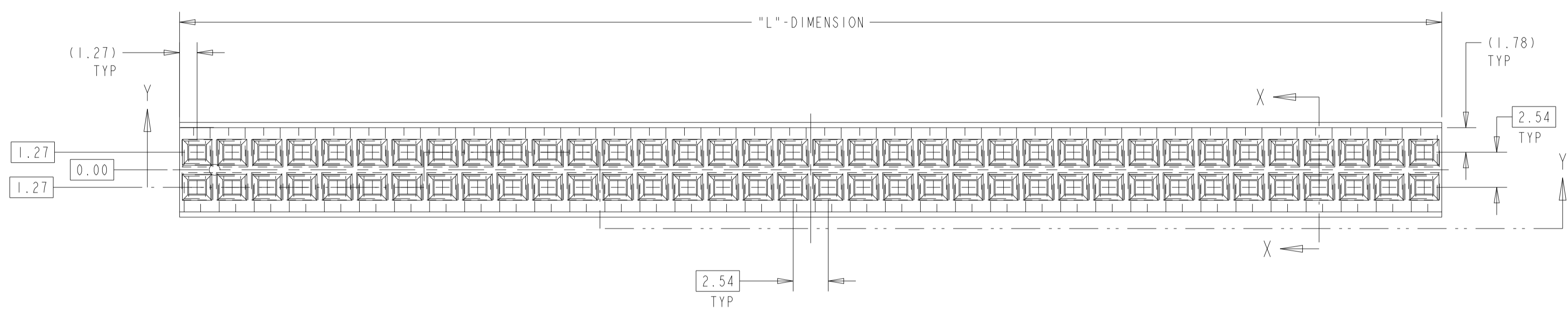


REVISIONS					
P	LTN	DESCRIPTION	DATE	OWN	APVD
S		REVISED PER ECR-22-132152	15JUN2022	RK	SD
S1		REVISED PER ECN-23-211206	24JUN2023	RK	MF
S2		REVISED PER ECN-23-243684	01JAN2024	RK	MF
S3		REVISED PER ECN-24-271868	21JUN2024	RK	ASC

- 1 MATERIAL: GLASS FILLED THERMOPLASTIC, UL 94-V0 RATED, COLOR: BLACK
- 2 'TE' PART NUMBER AND DATE CODE MARKED WHEN HOUSING SIZE PERMITS.
- 3 1.17±.38 CHARS. MARKED FIRST AND EVERY 5TH CAVITY, SAME SIDE OF PART NO. AND DATE CODE MARKING.
- 4 OBSOLETE PARTS; OBSOLETE CIS STREAMLINING PER D.RENAUD/D.SINISI
- 5. THE PRODUCT IS IN PROCESS FOR UL RECOGNITION.
- 6. THE PRODUCT IS IN PROCESS FOR QUALIFICATION, AND IS NOT YET QUALIFIED
- 7. NO PART NO. AND THE MARKING OF THE TRADEMARK AND THE DATE CODE MAY BE ROTATED 90°.

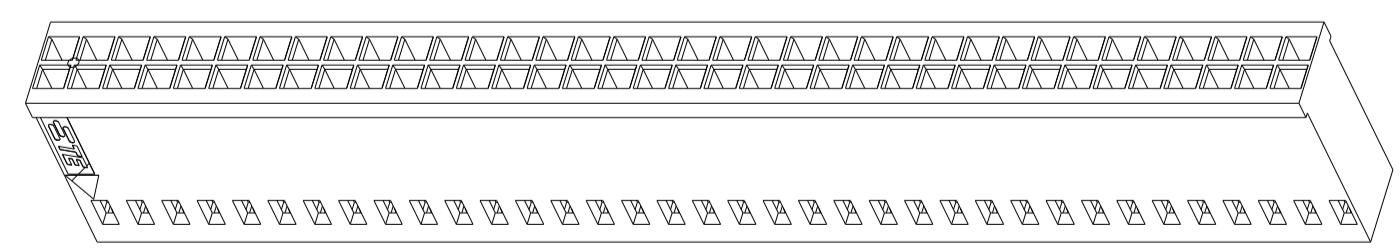


LONGEST POSITION SHOWN

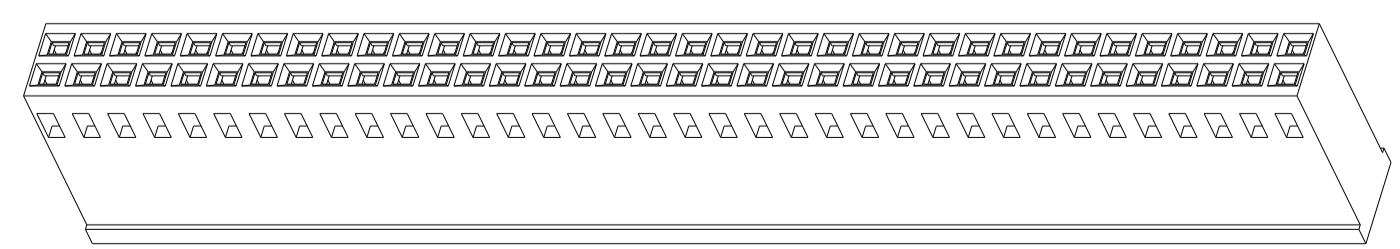


	ALL	6-87456-5	81.28	31	64	6-87456-6
	ALL	6-87456-3	73.66	28	58	6-87456-4
	ALL	6-87456-1	71.12	27	56	6-87456-2
	ALL	5-87456-9	60.96	23	48	6-87456-0
OBSOLETE	ALL	5-87456-7	83.82	32	66	5-87456-4
OBSOLETE	ALL	5-87456-5	88.90	34	70	5-87456-6
	ALL	5-87456-3	2.54	-	2	
	ALL	5-87456-1	76.20	29	60	5-87456-2
	NOTE #7	4-87456-9	5.08	1	4	5-87456-0
OBSOLETE	ALL	4-87456-7	91.44	35	72	4-87456-8
	ALL	4-87456-5	68.58	26	54	4-87456-6
	ALL	4-87456-3	53.34	20	42	4-87456-4
	ALL	4-87456-1	66.04	25	52	4-87456-2
	ALL	3-87456-9	63.50	24	50	4-87456-0
	ALL	3-87456-7	55.88	21	44	3-87456-8
	ALL	3-87456-5	50.80	19	40	3-87456-6
	ALL	3-87456-3	48.26	18	38	3-87456-4
	ALL	3-87456-1	45.72	17	36	3-87456-2
	ALL	2-87456-9	43.18	16	34	3-87456-0
	ALL	2-87456-7	40.64	15	32	2-87456-8
	ALL	2-87456-5	38.10	14	30	2-87456-6
	ALL	2-87456-3	35.56	13	28	2-87456-4
	ALL	2-87456-1	33.02	12	26	2-87456-2
	ALL	1-87456-9	30.48	11	24	2-87456-0
	ALL	1-87456-7	27.94	10	22	1-87456-8
	ALL	1-87456-5	25.40	9	20	1-87456-6
	ALL	1-87456-3	22.86	8	18	1-87456-4
	ALL	1-87456-1	20.32	7	16	1-87456-2
	ALL	87456-9	17.78	6	14	1-87456-0
	ALL	87456-7	15.24	5	12	87456-8
	NO PART #	87456-5	12.70	4	10	87456-6
	NO PART #	87456-3	10.16	3	8	87456-4
	NOTE #7	87456-1	7.62	2	6	87456-2
MARKING	UNMARKED HOUSING PART NUMBER	"L" DIM	NUMBER OF SPACES	NUMBER OF POSITIONS	MARKED HOUSING PART NUMBER	

ISOMETRIC VIEW



SCALE 2:1



SCALE 2:1

THIS DRAWING IS A CONTROLLED DOCUMENT.

OWN: E. BRANDENBERG 11-06-92
 CHK: J. GESEFORD 11-30-92
 APVD: J. GESEFORD 11-30-92

DIMENSIONS: mm
 TOLERANCES UNLESS OTHERWISE SPECIFIED:
 0 PLC ±
 1 PLC ±0.5
 2 PLC ±0.5
 3 PLC ±0.13
 4 PLC ±
 ANGLES ±0° 30'
 MATERIAL: FINISH: -

APPLIC. SPEC: -
 WEIGHT: -
 CUSTOMER DRAWING

NAME: MOD IV CRIMP SNAP-IN CONNECTOR, DOUBLE ROW, 2.54 CENTERS, SHORT ENTRY
 SIZE: A1 CAGE CODE: 00779 DRAWING NO: 87456
 RESTRICTED TO: -

SCALE: 4:1 SHEET: 1 OF 1 REV: S3