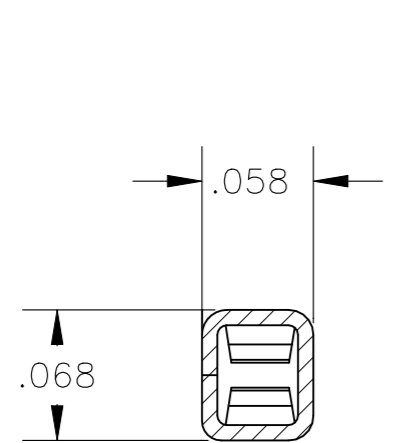
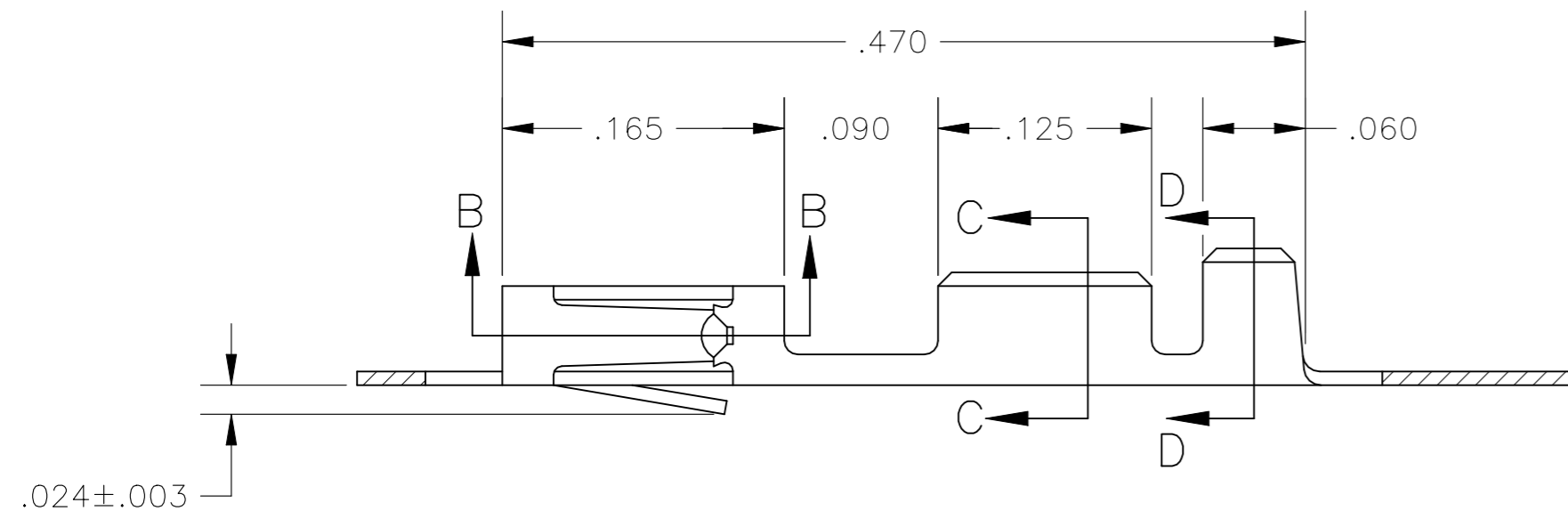
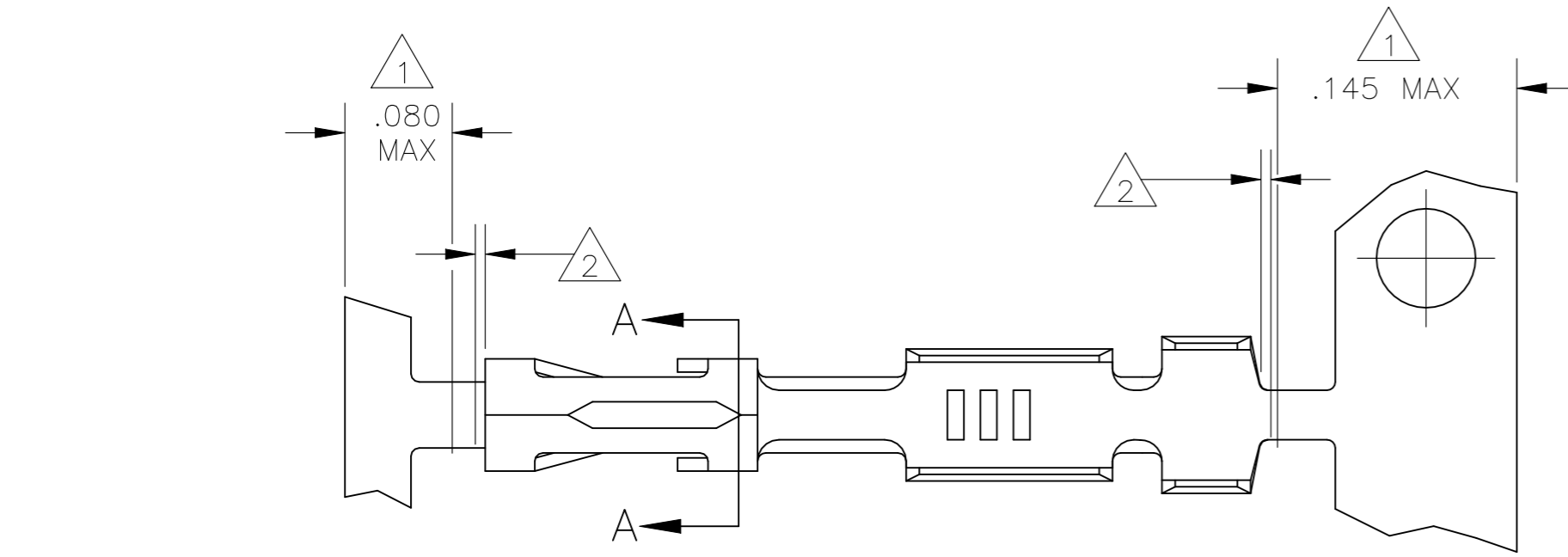
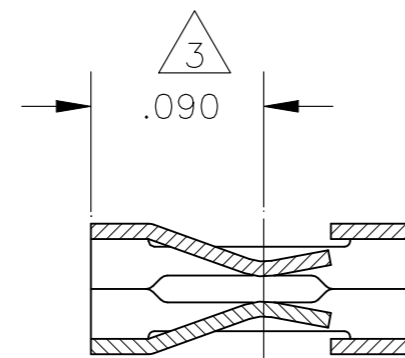


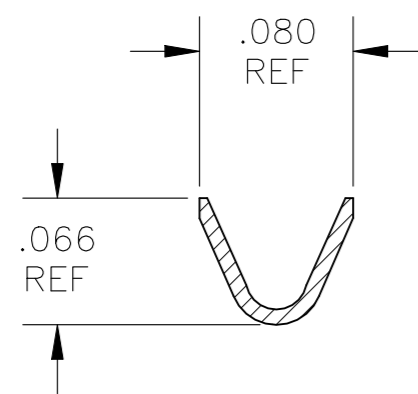
REVISIONS					
P	LTR	DESCRIPTION	DATE	DWN	APVD
	L2	REVISED PER ECN-23-237728	02NOV2023	RK	MM



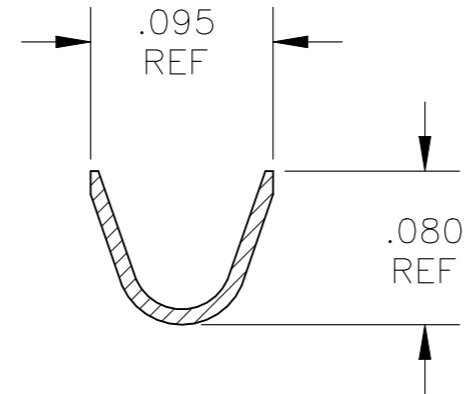
SECTION A-A



SECTION B-B



WIRE SIZE #20-#24  
SECTION C-C



INSULATION RANGE .069 MAX  
SECTION D-D

- 1 PLATING IS NOT REQUIRED IN THIS AREA.
- 2 .006 MAX LOOSE PIECE CUT-OFF.
- 3 POINT OF MEASUREMENT FOR PLATING THICKNESS, INSIDE BEAMS
- 4 .000050-.000150 PREPLATED BRIGHT TIN.
- 5 .000030 GOLD IN CONTACT AREA, GOLD FLASH ON THE REMAINDER, ALL OVER .000050 NICKEL.
- 6 .000030 GOLD OVER .000050 NICKEL ENTIRE TERMINAL.
- 7 .000050 GOLD OVER .000050 NICKEL ENTIRE TERMINAL.
- 8 .000015 GOLD IN CONTACT AREA, GOLD FLASH ON THE REMAINDER, ALL OVER .000050 NICKEL.
- 9 SHEARED EDGES ARE PERMITTED TO BE UNPLATED.
- 10 .000015 GOLD IN CONTACT AREA, .000050 NICKEL ON ENTIRE TERMINAL.
- 11 OBSOLETE PART NUMBER.

2-87309-5	<del>OBSOLETE</del>	2-87309-4	
2- -3	<del>OBSOLETE</del>	2- -1	
2- 11 -0	1- 11 -8	1 11 -9	9 10
1- 11 -7	11 -6	1 -2	8
1- 11 -6	11 -5	1 11 -1	7
1- 11 -5	11 -4	1 11 -0	6
1- -4	-3	-9	5
1-87309-3	87309-2	87309-8	4
LOOSE PIECE PART NUMBER	STANDARD APPLICATOR PART NUMBER	MINI APPLICATOR PART NUMBER	FINISH

THIS DRAWING IS A CONTROLLED DOCUMENT.		DWN L D RINGLEY 28JAN85	TE Connectivity	
DIMENSIONS: INCHES		CHK R J DAVIS 30JAN85	CONTACT, MOD V CRIMP SNAP-IN	
TOLERANCES UNLESS OTHERWISE SPECIFIED:		APVD R J DAVIS 30JAN85	NAME	
0 PLC ± -		PRODUCT SPEC	SIZE CAGE CODE DRAWING NO	
1 PLC ± -		APPLICATION SPEC	A2 00779 C=87309	
2 PLC ± -		FINISH	RESTRICTED TO	
3 PLC ± .005		WEIGHT	SCALE 10:1 SHEET 1 OF 1 REV L2	
4 PLC ± -		MATERIAL PHOS. BRONZE .008 THICK	CUSTOMER DRAWING	
ANGLES ± -		SEE TABLE		