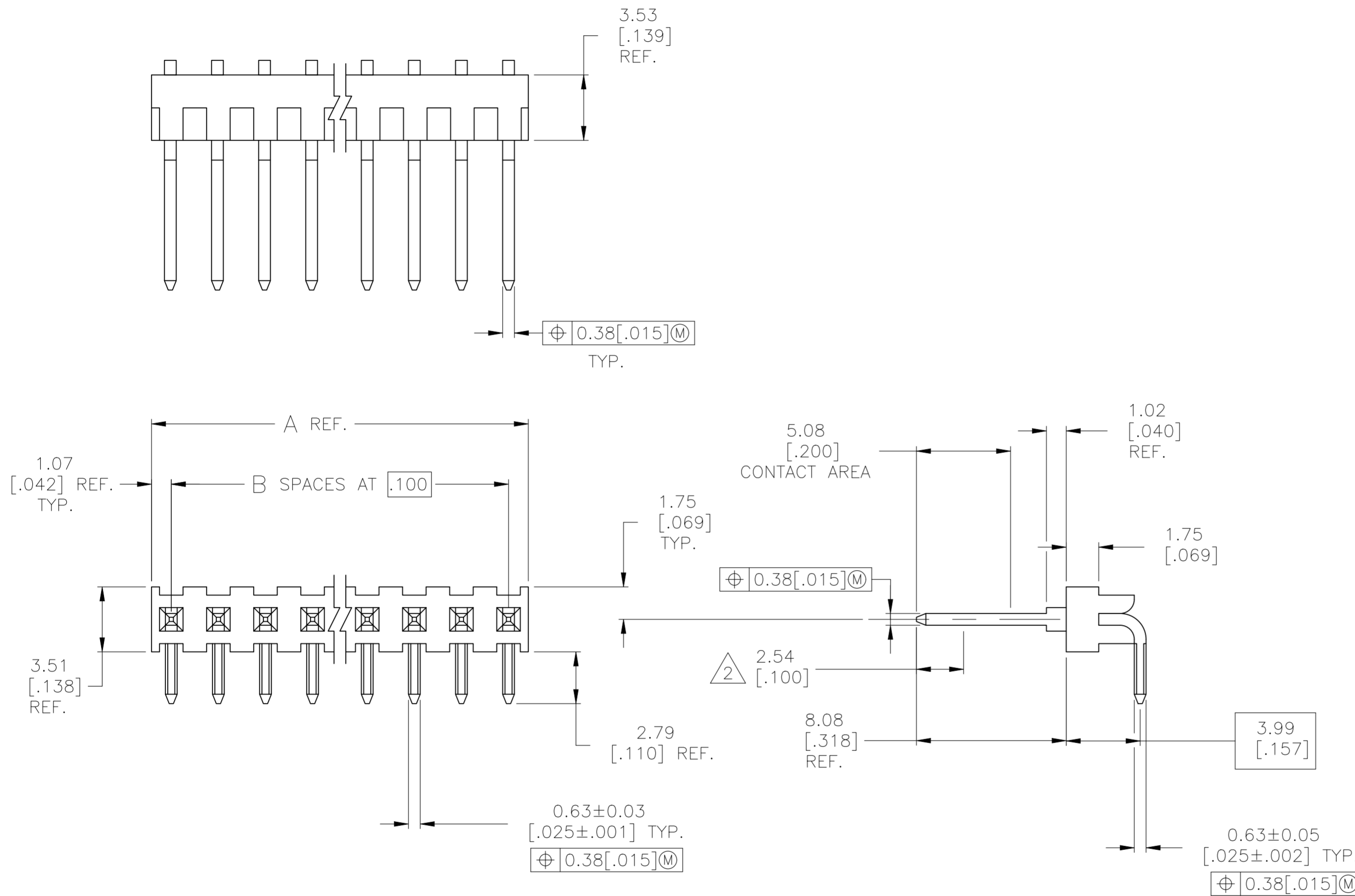


P	LTR	DESCRIPTION	DATE	DWN	APVD
J1		REVISED PER ECN-23-225110	08AUG2023	RK	MF



NOTES:

- RECOMMENDED MOUNTING HOLE: $\phi 0.89 \pm 0.08$ [.035 ± .003].
- POINT OF MEASUREMENT FOR PLATING THICKNESS.
- HOUSING: LCP. COLOR - BLACK. POSTS: PHOS. BRONZE
- 0.00076 [.000030] GOLD IN CONTACT AREA, GOLD FLASH ON REMAINDER OF POSTS, ALL OVER 0.00127 [.000050] NICKEL.

39	101.19 [3.984]	40	4-87232-0
38	98.65 [3.884]	39	3-87232-9
37	96.11 [3.784]	38	3-87232-8
36	93.57 [3.684]	37	3-87232-7
35	91.03 [3.584]	36	3-87232-6
34	88.49 [3.484]	35	3-87232-5
33	85.95 [3.384]	34	3-87232-4
32	83.41 [3.284]	33	3-87232-3
31	80.87 [3.184]	32	3-87232-2
30	78.33 [3.084]	31	3-87232-1
29	75.79 [2.984]	30	3-87232-0
28	73.25 [2.884]	29	2-87232-9
27	70.71 [2.784]	28	2-87232-8
26	68.17 [2.684]	27	2-87232-7
25	65.63 [2.584]	26	2-87232-6
24	63.09 [2.484]	25	2-87232-5
23	60.55 [2.384]	24	2-87232-4
22	58.01 [2.284]	23	2-87232-3
21	55.47 [2.184]	22	2-87232-2
20	52.93 [2.084]	21	2-87232-1
19	50.39 [1.984]	20	2-87232-0
18	47.85 [1.884]	19	1-87232-9
17	45.31 [1.784]	18	1-87232-8
16	42.77 [1.684]	17	1-87232-7
15	40.23 [1.584]	16	1-87232-6
14	37.69 [1.484]	15	1-87232-5
13	35.15 [1.384]	14	1-87232-4
12	32.61 [1.284]	13	1-87232-3
11	30.07 [1.184]	12	1-87232-2
10	27.53 [1.084]	11	1-87232-1
9	24.99 [0.984]	10	1-87232-0
8	22.45 [0.884]	9	87232-9
7	19.91 [0.784]	8	87232-8
6	17.37 [0.684]	7	87232-7
5	14.83 [0.584]	6	87232-6
4	12.29 [0.484]	5	87232-5
3	9.75 [0.384]	4	87232-4
2	7.21 [0.284]	3	87232-3
1	4.67 [0.184]	2	87232-2
0	2.13 [0.084]	1	87232-1
B	A	NO OF POSN	PART NUMBER

THIS DRAWING IS A CONTROLLED DOCUMENT.

DWN E. BRANDBERG 31-MAR-97	<p>TE Connectivity</p> <p>HEADER ASSY, MOD II, 2.54 [.100] CL, RIGHT ANGLE, 0.64 [.025] SQ POST, SINGLE ROW</p>
CHK S. SHUEY 31-MAR-97	
APVD S. SHUEY 31-MAR-97	
PRODUCT SPEC	
MATERIAL	NAME
FINISH	SIZE
	CAGE CODE
	DRAWING NO
	RESTRICTED TO
	WEIGHT
	A2 00779 C=87232
	CUSTOMER DRAWING
	SCALE
	5:1
	SHEET
	1 OF 1
	REV
	J1