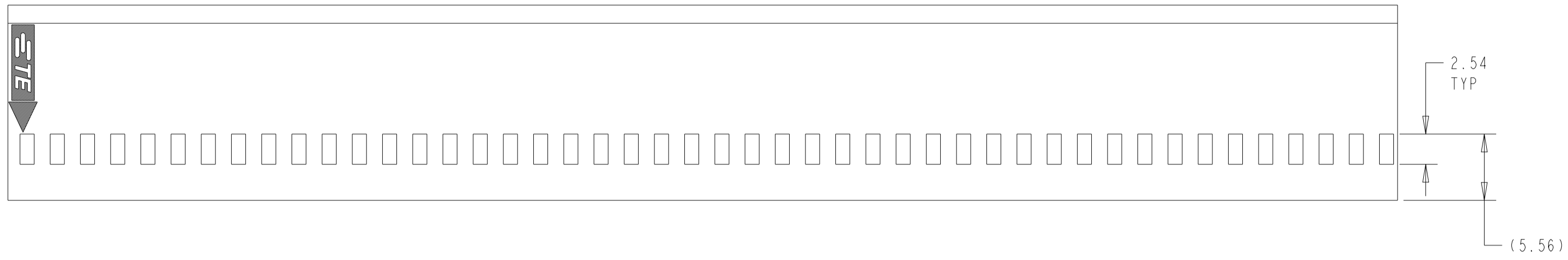
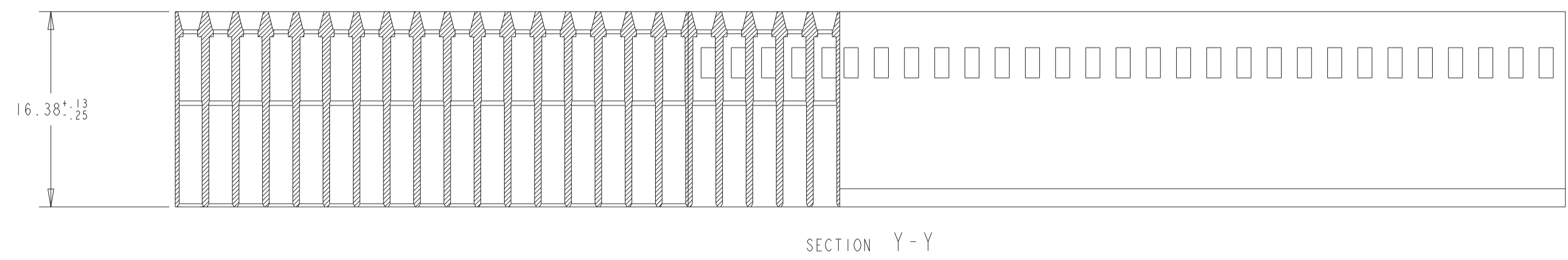
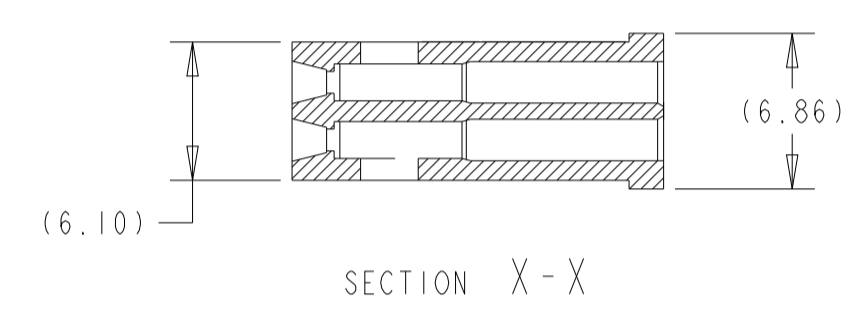
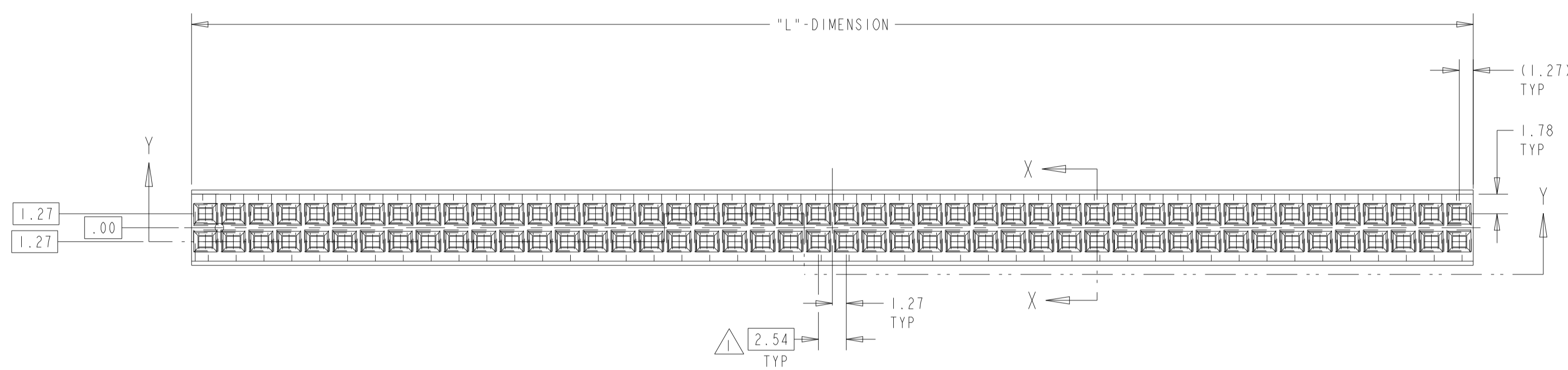


REVISIONS				
P	LTN	DESCRIPTION	DATE	APP'D
P1		REVISED PER ECO-09-020932	21AUG09	KK AEG
R		REVISED PER ECR-22-132152	15JUN2022	RK SD
R1		REVISED PER ECN-23-211206	24JUN2023	RK MF



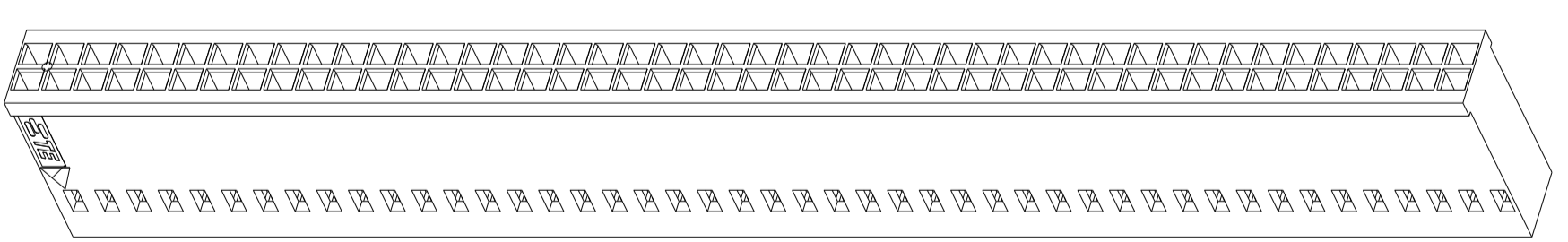
- 1. CAVITY LOCATION DIMENSIONS INCREASE IN INCREMENTS OF 2.54 TOLERANCE NON-CUMULATIVE
- 2. USE EXTRACTION TOOL 91052 TO REMOVE RECEPTICAL CONTACTS.
- 3. OBSOLETE PARTS: OBSOLETE CIS STREAMLINING PER D. RENAUD/D. SINISI
- 4. MATERIAL: GLASS FILLED THERMOPLASTIC, UL 94-V0 RATED, COLOR: BLACK
- 5. THE PRODUCT IS IN PROCESS FOR UL RECOGNITION.
- 6. THE PRODUCT IS IN PROCESS FOR QUALIFICATION, AND IS NOT YET QUALIFIED.

LONGEST POSITION SHOWN

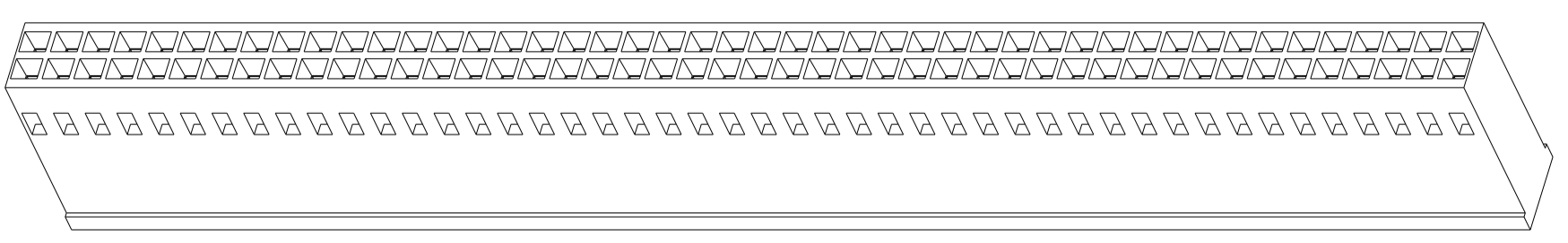


	5.21	1	4	2-86177-5
OBSOLETE	89.03	34	70	2-86177-4
	61.09	23	48	2-86177-3
3	116.97	45	92	2-86177-2
	63.63	24	50	2-86177-1
	10.29	3	8	2-86177-0
OBSOLETE	66.17	25	52	1-86177-9
	7.75	2	6	1-86177-8
	56.01	21	44	1-86177-7
	22.99	8	18	1-86177-6
	20.45	7	16	1-86177-5
	17.91	6	14	1-86177-4
	15.37	5	12	1-86177-3
	12.83	4	10	1-86177-2
	50.93	19	40	1-86177-1
	48.46	18	38	1-86177-0
	45.85	17	36	86177-9
	43.31	16	34	86177-8
	40.77	15	32	86177-7
	38.23	14	30	86177-6
	35.69	13	28	86177-5
	33.15	12	26	86177-4
	30.61	11	24	86177-3
	28.07	10	22	86177-2
	25.53	9	20	86177-1
	"L" DIMENSION	NUMBER OF SPACES	NUMBER OF POSITIONS	PART NUMBER

ISOMETRIC VIEW



SCALE 2:1



SCALE 2:1

THIS DRAWING IS A CONTROLLED DOCUMENT.

OWN: BOB BOLES B6 07SEP89
 CH: J. GESEFORD 23OCT89
 APVD: J. GESEFORD 23OCT89

TE Connectivity

NAME: MOD IV CRIMP SNAP-IN CONNECTOR, DOUBLE ROW, 2.54 CENTERS

SIZE: A1 CAGE CODE: 00779 DRAWING NO: 86177

RESTRICTED TO: REV 1

SCALE: 3:1 SHEET 1 OF 1