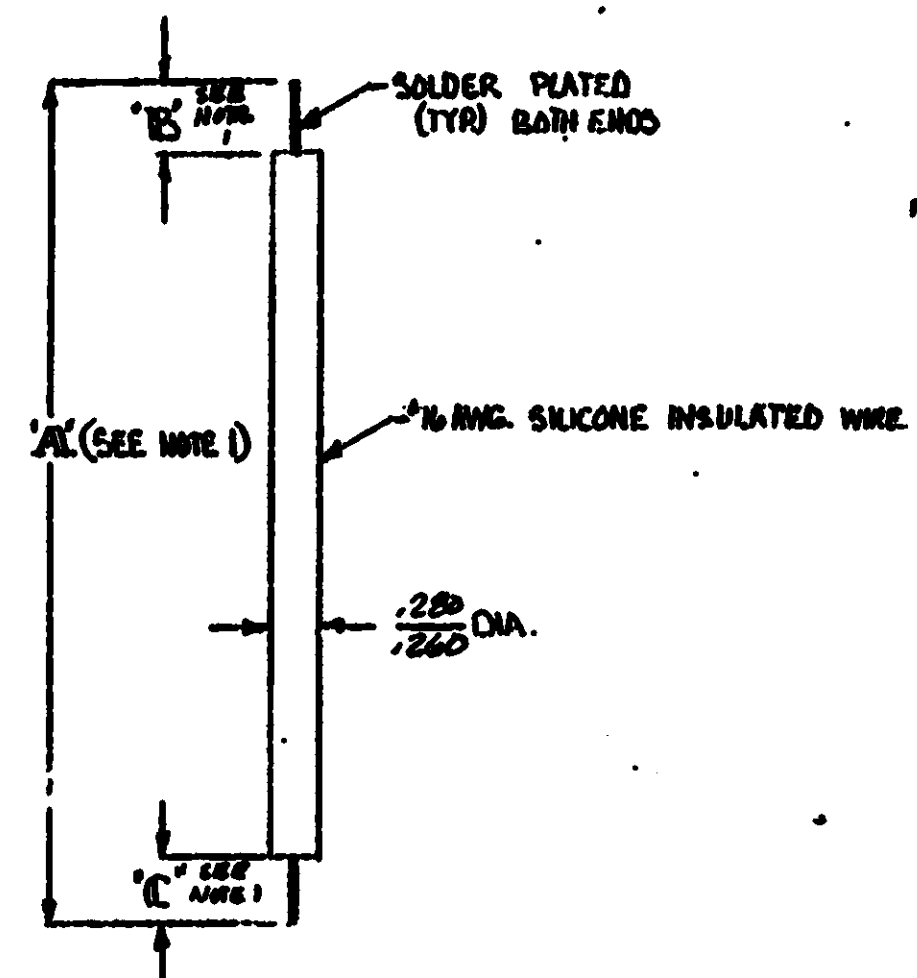


4
 LINES MADE IN THIRD ANGLE PROJECTION

© COPYRIGHT 1971 BY AMP INCORPORATED, HARRISBURG, PA.
 ALL INTERNATIONAL RIGHTS RESERVED. AMP INCORPORATED PRODUCTS
 COVERED BY U. S. AND FOREIGN PATENTS AND/OR PATENTS PENDING.

AMP PART NO.	A	B	C		
840097-1	4.75	.50	.38	OBSOLETE	
-2	11.75	.38	.38	OBSOLETE	
-3	14.00	.38	.38	OBSOLETE	
-4	30.00	.25	.38	OBSOLETE	
-5	26.00	.38	.38	OBSOLETE	
-6	4.75	.38	.38	OBSOLETE	
-7	36.00	.38	.38	OBSOLETE	
-8	10.00	.25	.38	OBSOLETE	
-9	6.75	.38	.38	OBSOLETE	
1-	13.00	.38	.38	OBSOLETE	
1-	26.75	.38	.38	OBSOLETE	
1-	2	11.75	.38	.38	OBSOLETE
1-	3	7.50	.38	.38	OBSOLETE
1-	4	13.75	.38	.38	OBSOLETE
1-	5	11.25	.38	.38	OBSOLETE
1-	6	18.00	.38	.38	OBSOLETE
1-	7	4.25	.25	.35	OBSOLETE
1-	8	30.00	.38	.38	OBSOLETE
1-	9	10.00	.38	.38	OBSOLETE
2-	0	5.00	.25	1.00	OBSOLETE
2-	1	17.00	.38	.38	OBSOLETE
2-	2	17.00	.38	.38	OBSOLETE
2-	3	55.00	.38	.38	OBSOLETE
2-	4	40.00	.38	.38	OBSOLETE
2-	5	8.50	.38	.38	OBSOLETE
2-	6	120.00	.38	.38	OBSOLETE
2-	7	220.01	.38	.38	OBSOLETE
2-	8	600.00	.38	.38	OBSOLETE
2-	9	26.75	.38	.38	OBSOLETE
3-	0	200.00	.38	.38	OBSOLETE
3-	1	60.00	.38	.38	OBSOLETE
3-	2	450.00	.38	.38	OBSOLETE
3-	3	810.00	.38	.38	OBSOLETE
3-	4	75.00	.38	.38	OBSOLETE
3-	5	5.00	.25	.25	OBSOLETE
3-	6	22.00	.25	.25	OBSOLETE
3-	7	24.00	.25	.25	OBSOLETE
3-	8	4.70	.25	.31	OBSOLETE
3-	9	21.00	.25	.25	OBSOLETE
4-	0	23.00	.25	.25	OBSOLETE
4-	1	30.00	.25	.25	OBSOLETE
4-	2	8.00	.38	.38	OBSOLETE
4-	3	1320.00	.38	.38	OBSOLETE
4-	4	3.50	.38	.38	OBSOLETE
4-	5	200.00	.38	.38	OBSOLETE
4-	6	120.00	.38	.38	OBSOLETE
4-	7	180.00	.38	.38	OBSOLETE
4-	8	1200.00	.38	.38	OBSOLETE
4-	9	990.00	.38	.38	OBSOLETE
5-	0	10.00	.38	.38	OBSOLETE
5-	1	11.00	.25	.25	OBSOLETE
5-	2	9.30	.31	.31	OBSOLETE
5-	3	11.60	.31	.31	OBSOLETE
5-	4	51.50	.25	.25	OBSOLETE
5-	5	7.25	.38	.38	OBSOLETE
5-	6	3.85	.38	.38	OBSOLETE
5-	7	5.88	.38	.38	OBSOLETE
5-840097-8	396.00	—	—	OBSOLETE	
5-	9	3000.00	—	—	OBSOLETE
5-	0	7.00	—	—	OBSOLETE

REVISIONS					
REV	ZONE	LTR	DESCRIPTION	DATE	APPROVED
1	P		REV. DRAWING	2/22/79	M.J.
2	R		ADD DASH 5-5	2-27-82	M.J.
3	R		ADD 60-60	3/14/82	M.J.
4	S		085-2-5-6-8-10-5-1-7-3-2- 3-5-5-6-5-7-4-0-4-5-1- 5-2-8-5-5-7-5-5-6-0-0 ELEM 54629	11-12-84	R.B.
5	T		085-296-58 ECN L-1587	1/23/87	R.B.
6	U		085-296-58 ECN L-1587	1-89	T.W.



1. TOLERANCE : UP TO 24" - ±.12
 24" & UP - ±.196
2. COLOR OF LEAD WIRE WHITE UNLESS OTHERWISE SPECIFIED.

UNLESS OTHERWISE SPECIFIED DIMENSIONS ARE IN INCHES. TOLERANCES: .00 ± .000 ± ANGLES ±			CONTRACT NO.		PART NO.	
MATERIAL			DR <i>[Signature]</i> 2/22/79		AMP INCORPORATED Eliot, Pa.	
FINISH			CHK		NAME LEAD ELECTRICAL LGN-1, 1, 3	
NEXT ASSY USED ON			APPRO <i>[Signature]</i> 7-16-63		SIZE CODE IDENT NO DRAWING NO	
BY REGO APPLICATION			APPRO <i>[Signature]</i> 1/22/79		C 00779 840097	
			DESIGN APPD		SCALE	
			OTHER APPD		SHEET 1/1	

CUSTOMER DRAWING