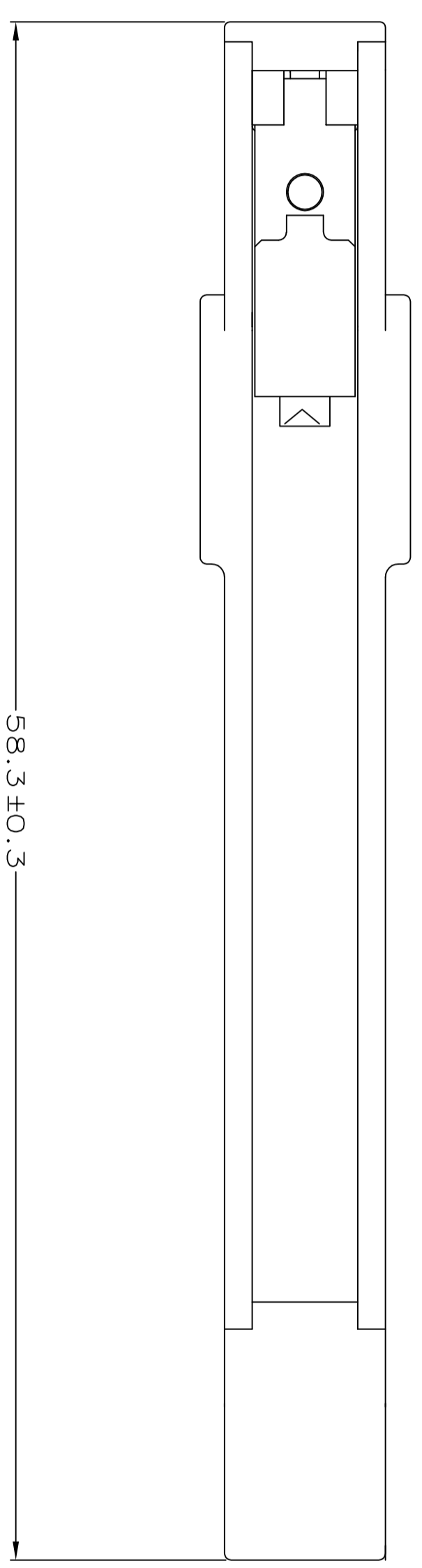
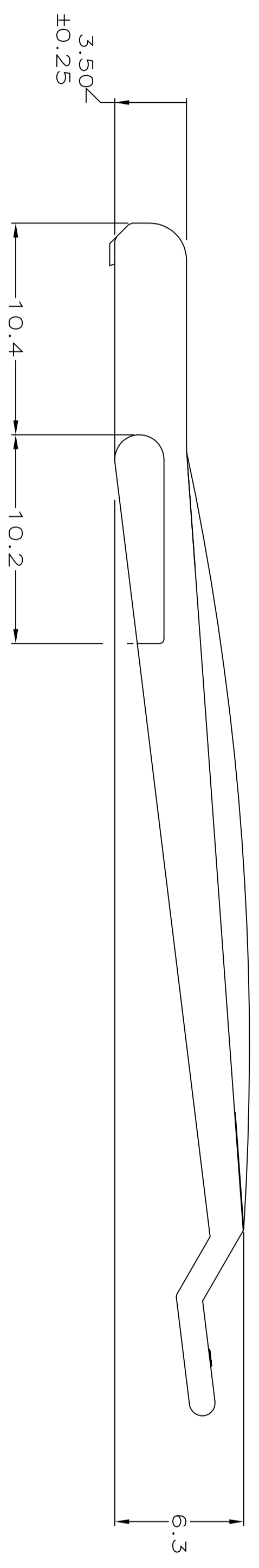
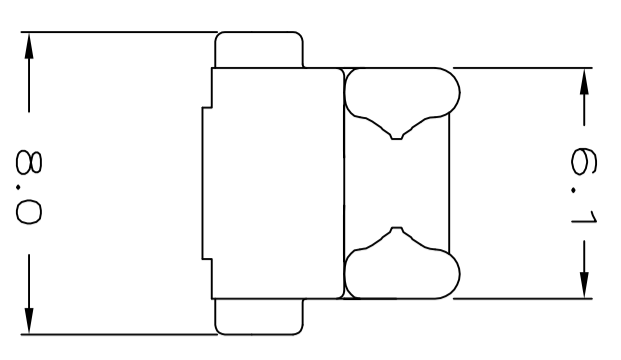


| REVISONS |   | Loc | DIST | P | TR | DESCRIPTION           | DATE    | DNM | APPD |
|----------|---|-----|------|---|----|-----------------------|---------|-----|------|
| AG       | 0 |     |      |   |    | REVISED ECO-14-014737 | 29SEP14 | OL  | SZ   |

1. USED IN AMP-DUAC/PL™ RECEPTACLE HOUSINGS. ONE REQUIRED PER HOUSING.
2. INSTALL LATCH ASSEMBLY AFTER CUSTOMER SUPPLIED BACKSHELL. (USE OF BACKSHELL IS REQUIRED).
3. LATCH ASSEMBLY AVAILABLE WITH STANDARD LEVER ARM, 794150-1.
  - △ MATERIAL: LATCH ARM - PBT, GLASS REINFORCED COLOR - NATURAL. SPRING - STAINLESS STEEL.
  - △ MATERIAL: LATCH ARM - PBT, GLASS REINFORCED COLOR - BLURPL. SPRING - STAINLESS STEEL.



△ 794149-2  
 △ 794149-1  
 PART NUMBER

|  |       |                              |         |   |   |
|--|-------|------------------------------|---------|---|---|
| THIS DRAWING IS A CONTROLLED DOCUMENT. |       | DMW                          | 8-15-97 | <b>AMP</b>  | AMP Incorporated<br>Harrisburg, PA 17105-3608 |
| DIMENSIONS: mm                         |       | CHK                          | 8-15-97 |   |   |
| TOLERANCES UNLESS OTHERWISE SPECIFIED: |       | APVD                         | 8-15-97 | LATCH ASSEMBLY, EXTENDED,<br>AMP-DUAC/PL™ POWER CONNECTOR |   |
| 0 PLG                                  | ±     | NAME                         |         |   |   |
| 1 PLG                                  | ±0.2  | LATCH ASSEMBLY, EXTENDED,    |         |   |   |
| 2 PLG                                  | ±0.13 | AMP-DUAC/PL™ POWER CONNECTOR |         |   |   |
| 3 PLG                                  | ±     | PRODUCT SPEC                 |         | SIZE  | A2  |
| 4 PLG                                  | ±     | APPLICATION SPEC             |         | CAGE CODE   | 00779   |
| ANGLES                                 | ±     | WEIGHT                       |         | DRAWING NO  | 794149  |
| FINISH                                 | ±1    | CUSTOMER DRAWING             |         | SCALE   | 5:1   |

**METRIC**