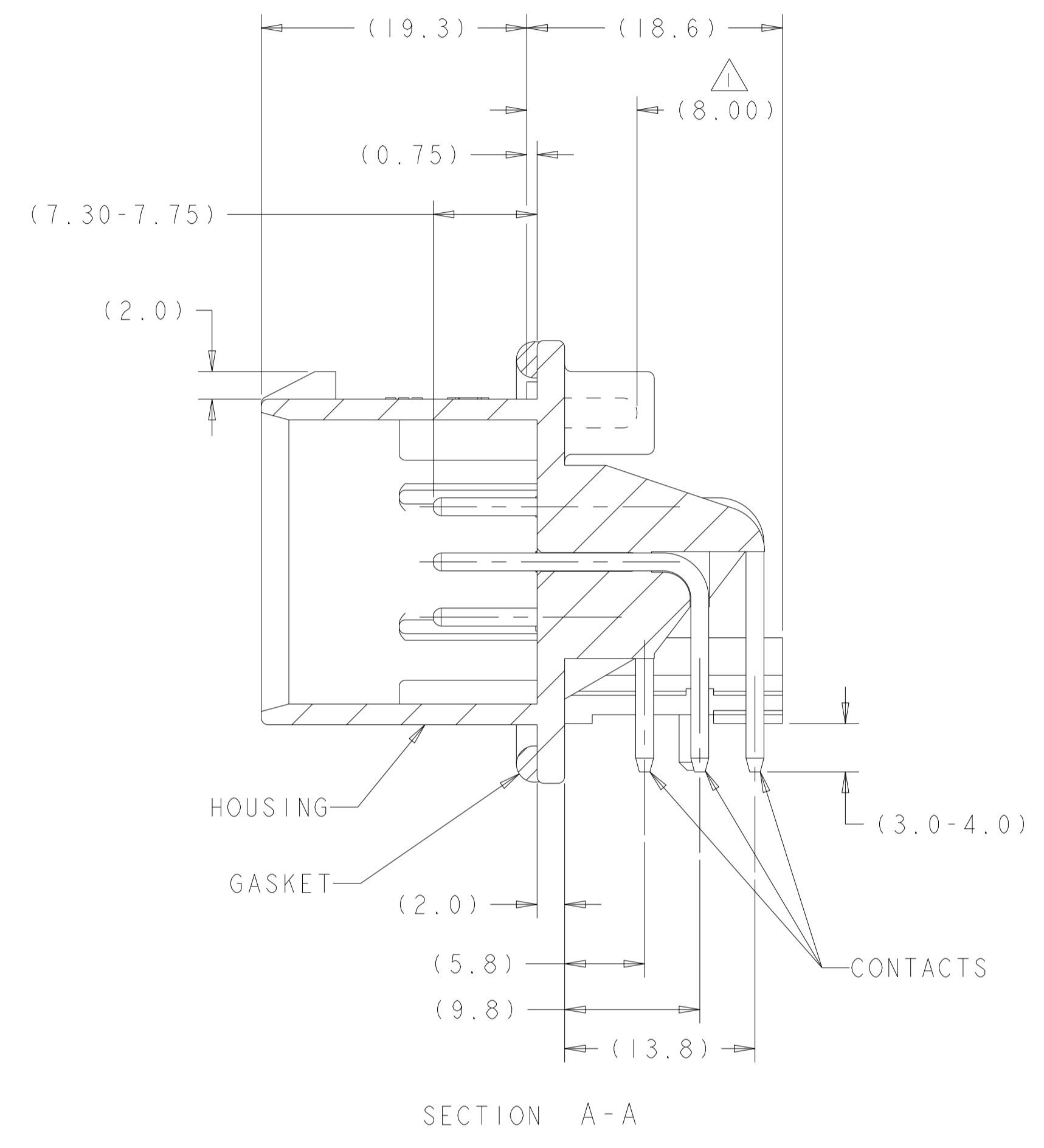
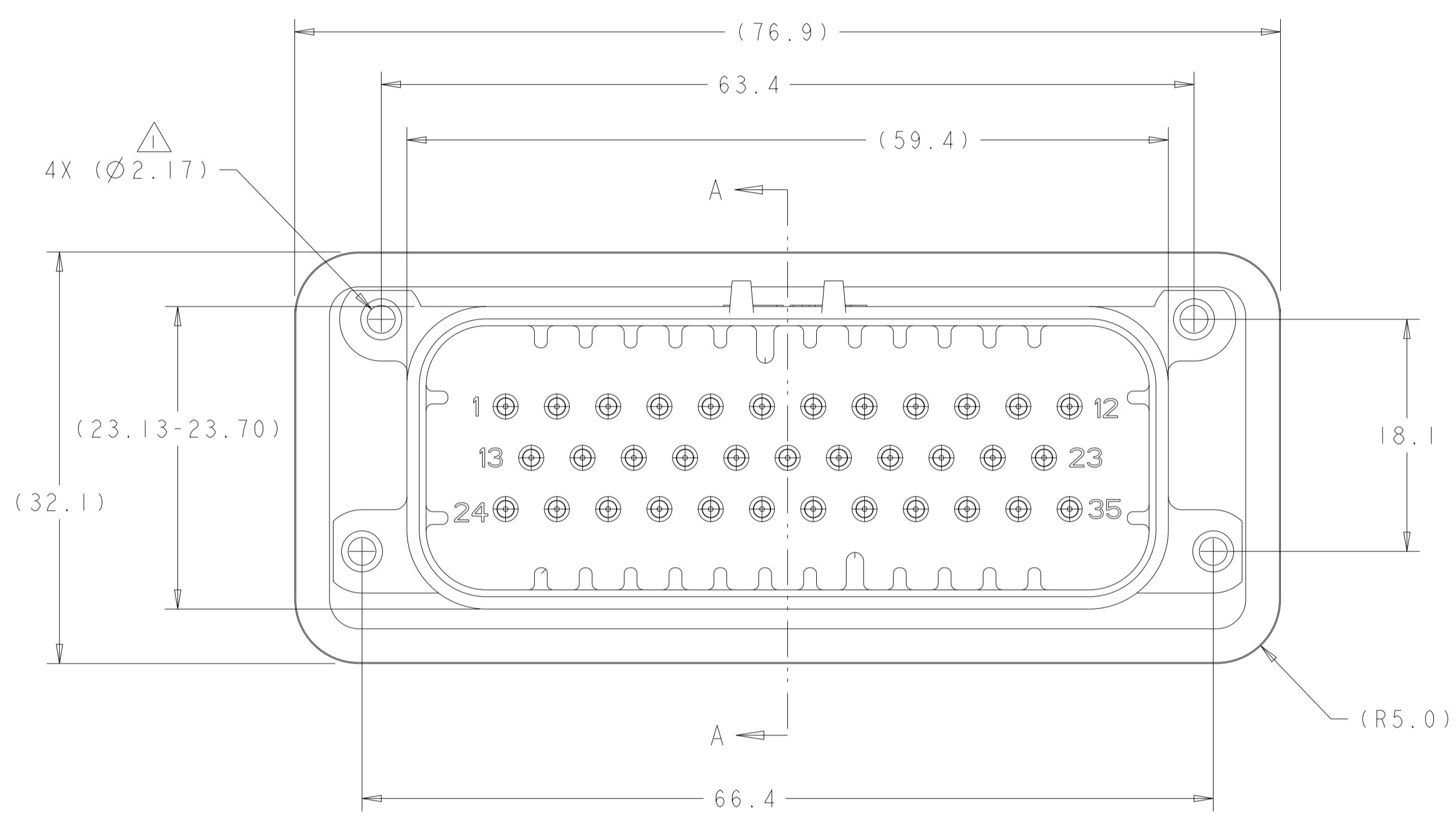


REVISIONS				
REV	LTN	DESCRIPTION	DATE	APPV
J10		REV PER ECO-20-004256	25MAR2020	JM DS
J11		REVISED PER PCN E-20-016603	24NOV2020	PN DS
K		REVISED PER ECR-22-153179	18OCT2022	DK CB
K1		REVISED PER ECR-24-216938	16SEP2024	DK CB

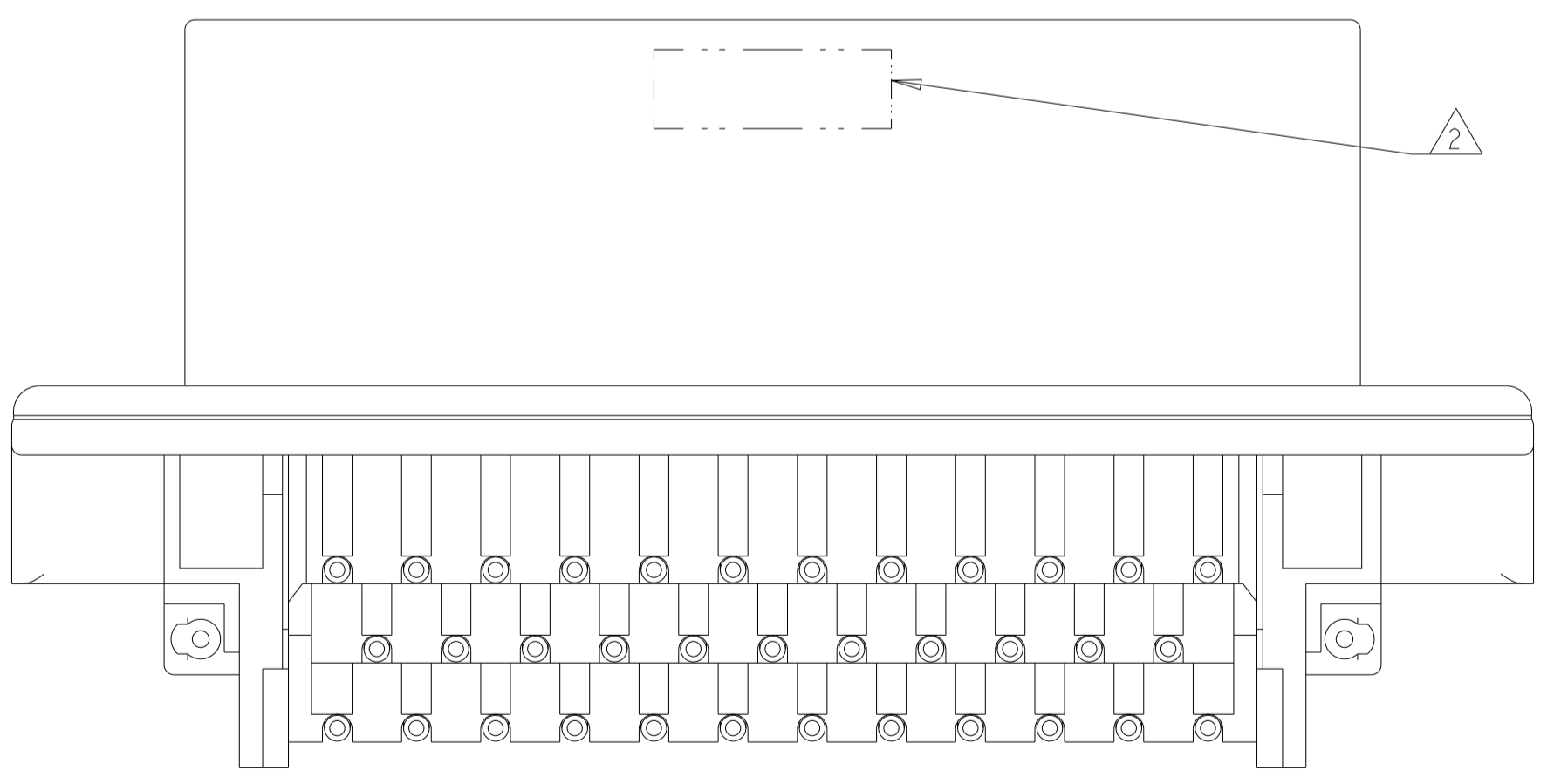


⚠ SUGGESTED MOUNTING SCREW SIZE IS Ø2.50mm [APPROX. 0.099 INCH] SELF TAPPING THREAD FORMING SCREW, SUCH AS DELTA PT, TO BE DRIVEN AT 0.6-0.8 N-m. THE CUSTOMER MUST TEST THE SCREW SIZE AND TYPE IN ORDER TO VERIFY THEIR SELECTION BEFORE USE IN APPLICATION

TO VALIDATE HEADER MOUNTING PERFORMANCE, TE CONNECTIVITY WILL CONTINUE TO UTILIZE THE FOLLOWING TORQUE VALIDATION PROCESS ACCORDING TO APPLICATION SPEC 114-16016:  
 MOUNTING PANEL THICKNESS - 4.75 +/- 0.15mm  
 SCREW - 2.5X12mm DELTA PT

CUSTOMERS MAY VALIDATE OTHER SCREW SIZES AND TYPES AT THEIR OWN DISCRETION

- ⚠ DATE CODE IN THIS LOCATION USING 5 DIGIT CODE  
 FIRST 2 DIGITS = YEAR, SECOND 2 DIGITS = WEEK  
 LAST DIGIT = DAY
- ⚠ HOUSING COLORS ARE MECHANICALLY KEYED TO MATE ONLY WITH IDENTICALLY COLORED PLUG ASSEMBLIES.
- ⚠ MATERIAL: HEADER HOUSING - GLASS FILLED PBT  
 PINS - TIN OR GOLD PLATED BRASS  
 GASKET - SILICONE
- 5. HEADER MATES TO PLUG ASSEMBLY 776164 WHICH USES REELED TERMINAL 770520 OR LOOSE PIECE TERMINAL 770854

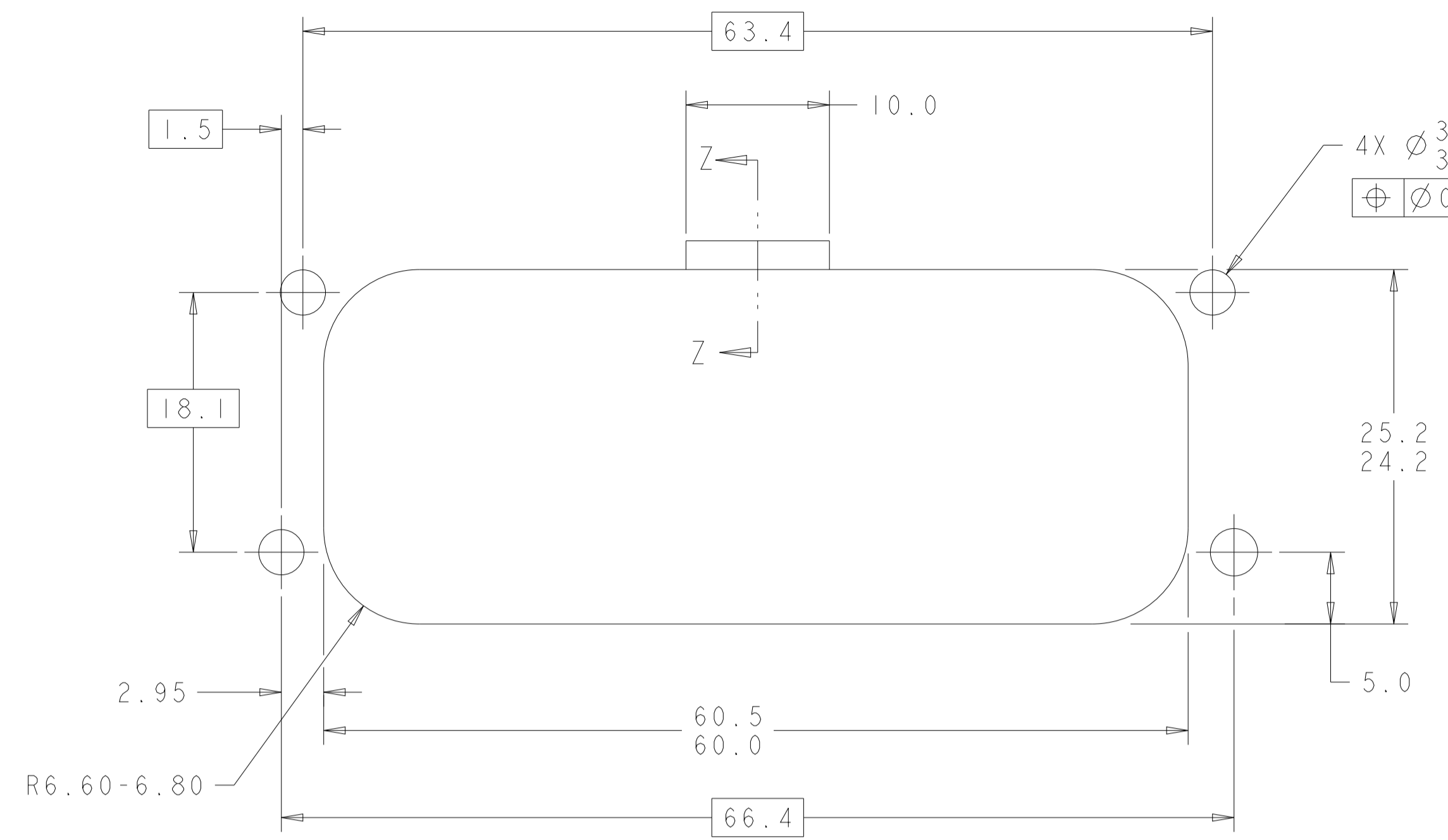


776163-1 & 1-776163-1  
 KEY LOCATION AS SHOWN

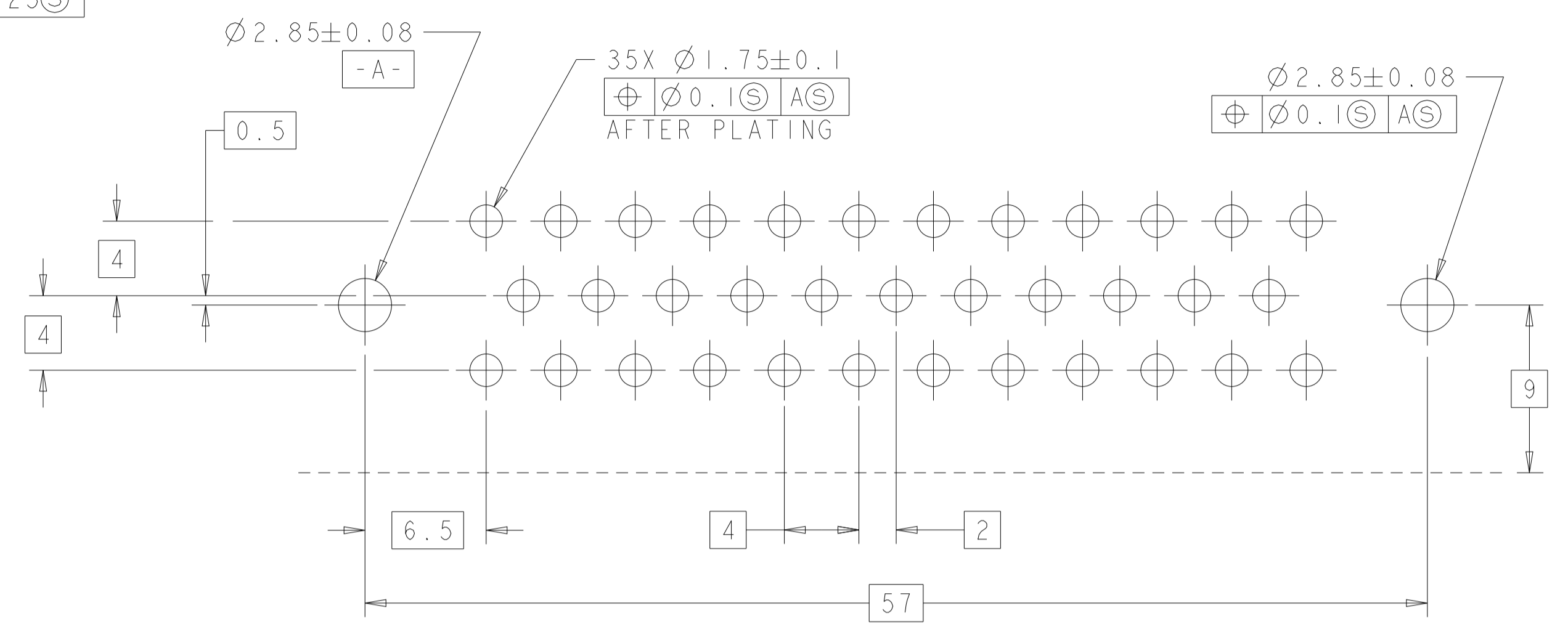
GOLD	ORANGE	1-776163-6
GOLD	BLUE	1-776163-5
GOLD	GRAY	1-776163-4
GOLD	NATURAL (WHITE)	1-776163-2
GOLD	BLACK	1-776163-1
TIN	BLUE	776163-5
TIN	GRAY	776163-4
TIN	NATURAL (WHITE)	776163-2
TIN	BLACK	776163-1
FINISH	HEADER COLOR	PART NUMBER

THIS DRAWING IS A CONTROLLED DOCUMENT.		OWN R. VESTAL 31DEC2002	TE Connectivity NAME: HEADER ASSEMBLY, 35 POSITION, RIGHT ANGLE, AMPSEAL
DIMENSIONS: mm		CHK D. CROWE 31DEC2002	
TOLERANCES UNLESS OTHERWISE SPECIFIED:		APPV D. CROWE 31DEC2002	SIZE: 108-1329
0 PLC	±	PRODUCT SPEC	APPLICATION SPEC
2 PLC	±0.2	114-16016	114-16016
3 PLC	±	WEIGHT	40.45g
4 PLC	±	CUSTOMER DRAWING	SCALE 4:1 SHEET 1 OF 2 REV K1
ANGLES	±		
FINISH	±		

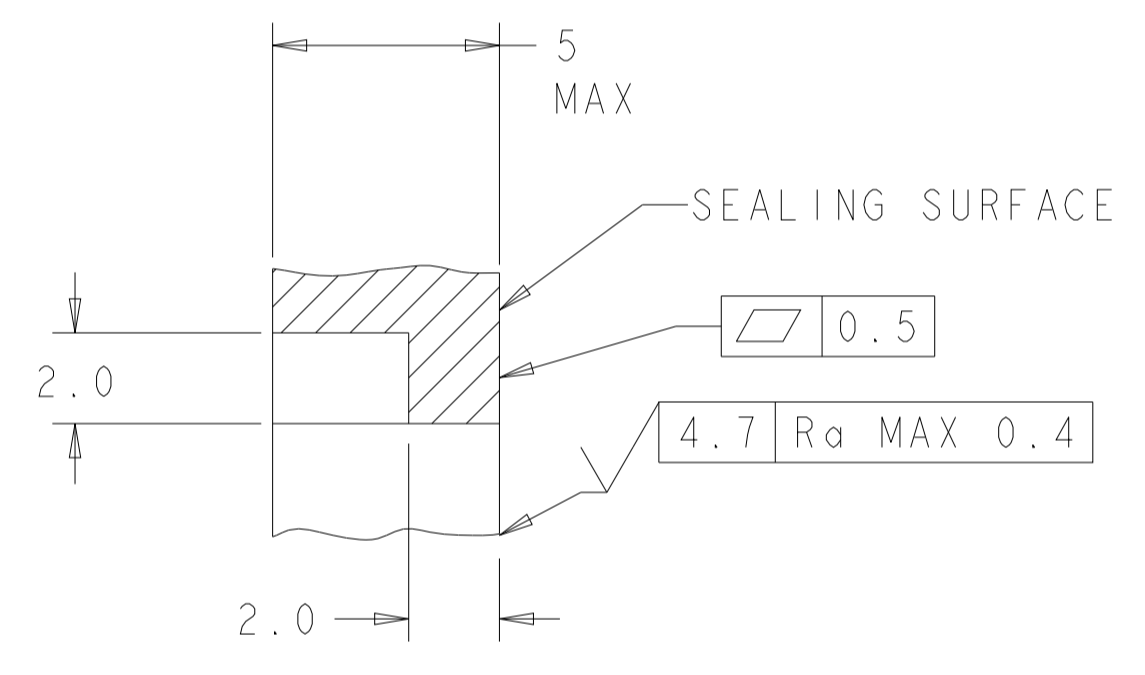
REVISIONS				
P	LTN	DESCRIPTION	DATE	APVD
-	-	SEE SHEET 1	-	-



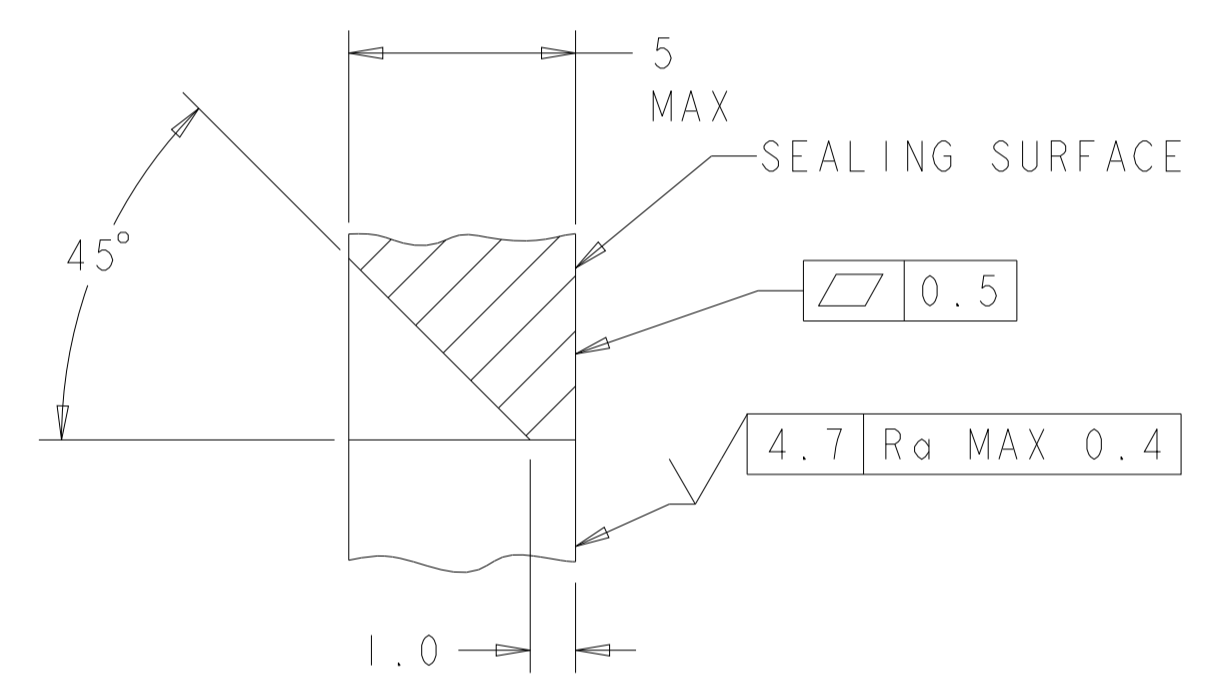
RECOMMENDED MOUNTING HOLE LAYOUT FOR 5.0 MAX THICK PANEL



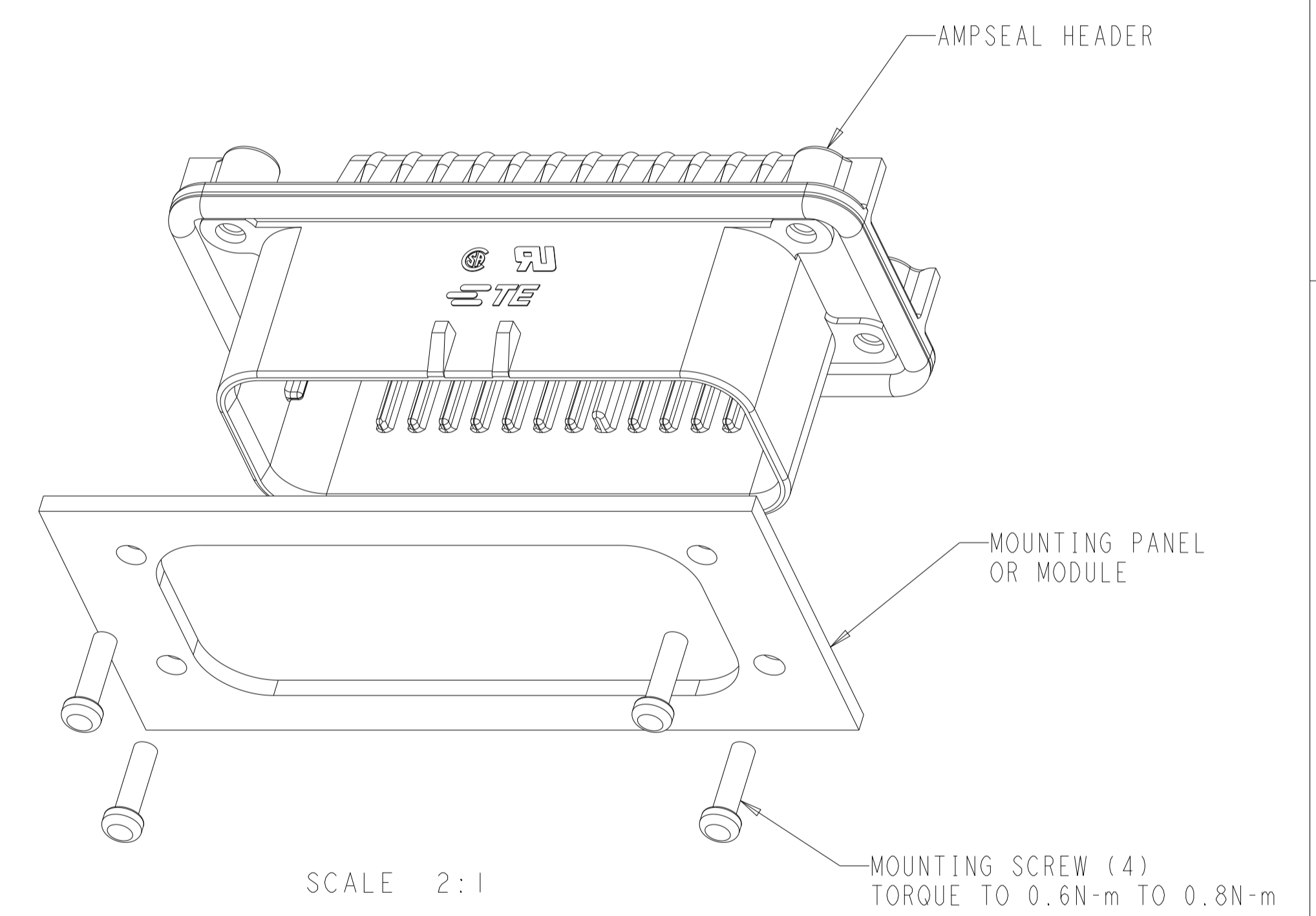
RECOMMENDED P.C. BOARD LAYOUT FOR 1.57 THICK P.C. BOARD



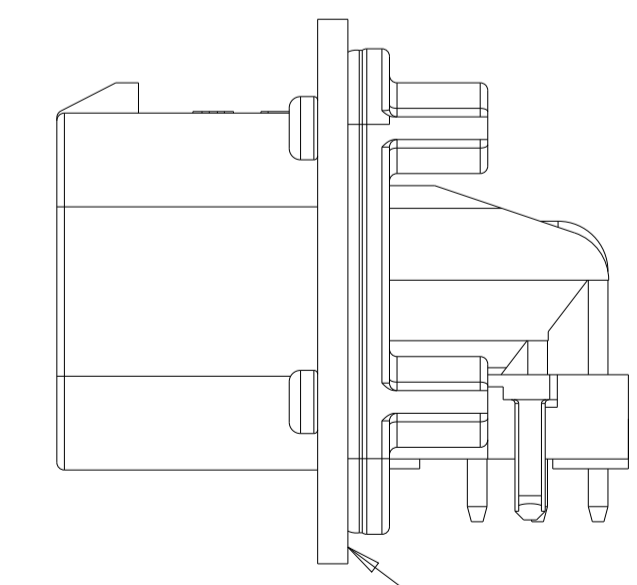
SECTION Z-Z  
 OPTIONAL CONSTRUCTION IF THICKNESS IS GREATER THAN 2.0  
 SCALE 6:1



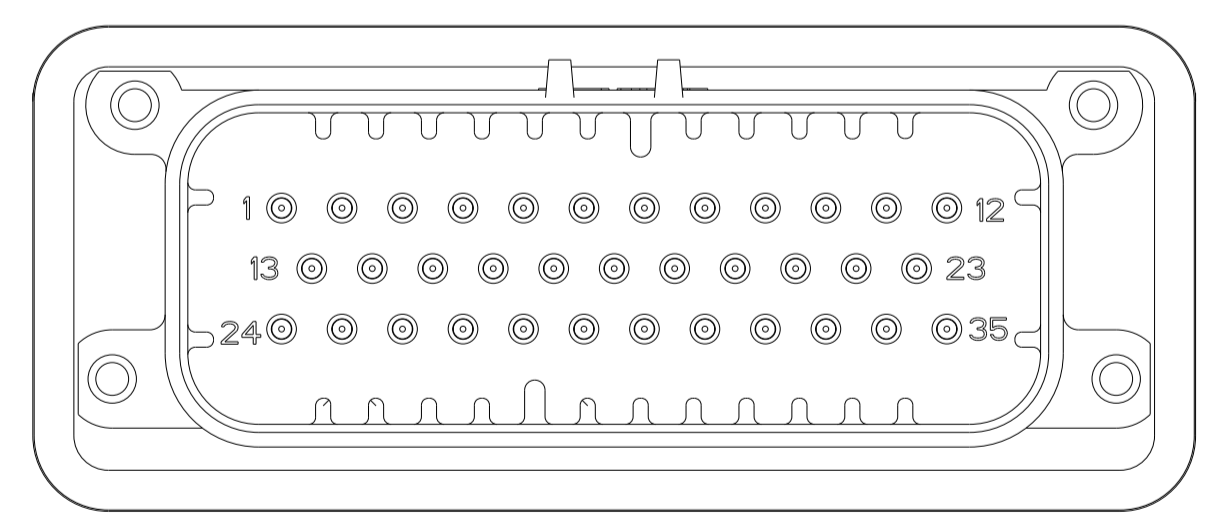
SECTION Z-Z  
 OPTIONAL CONSTRUCTION IF THICKNESS IS GREATER THAN 2.0  
 SCALE 6:1



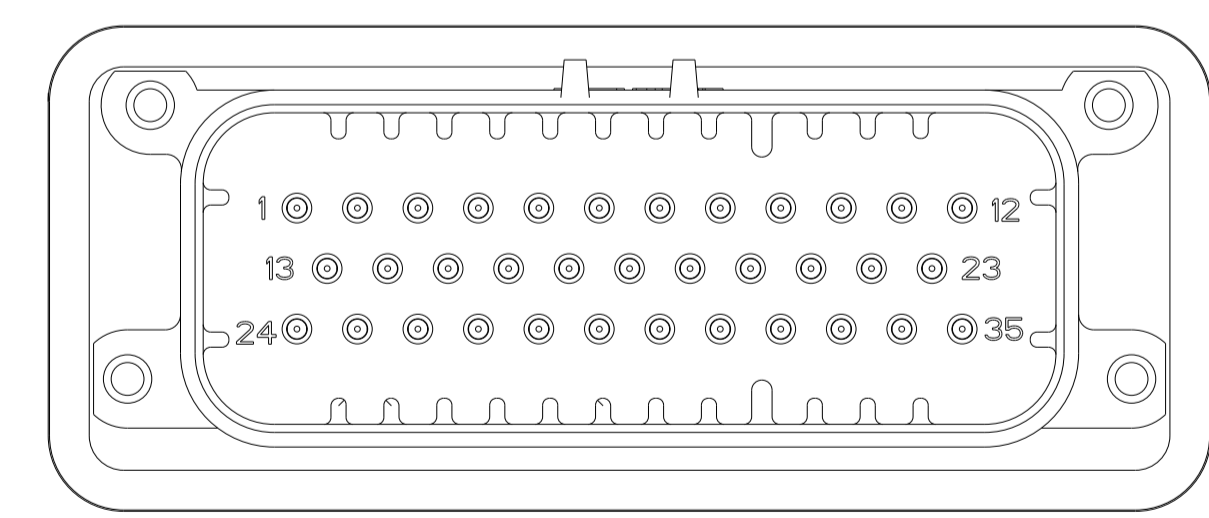
SCALE 2:1



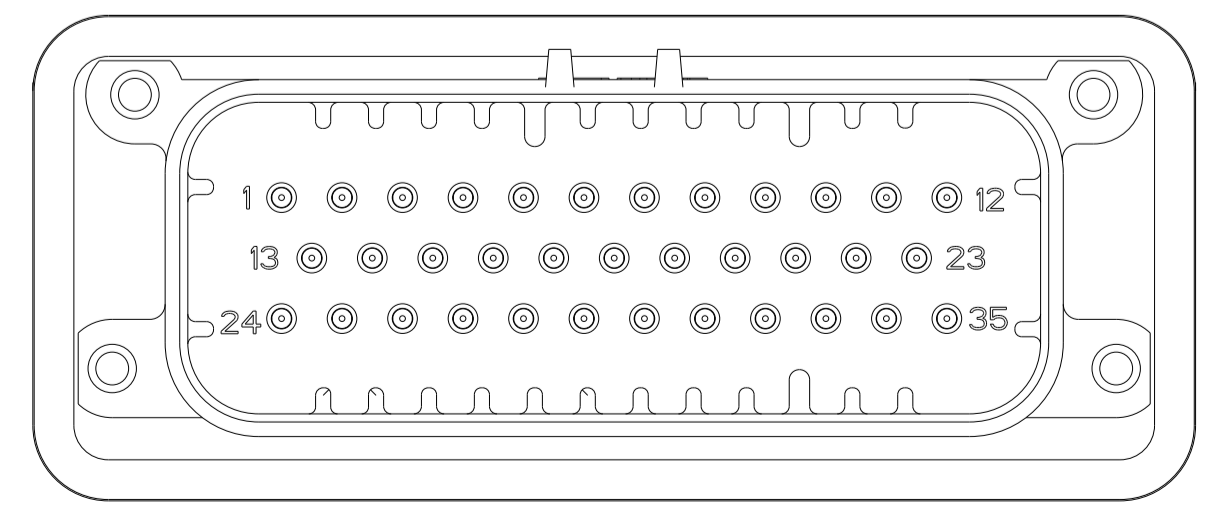
SCALE 2:1  
 ENSURE THE HEADER IS FLUSH TO THE PANEL FACE ALL AROUND BEFORE TIGHTENING TO FINAL TORQUE



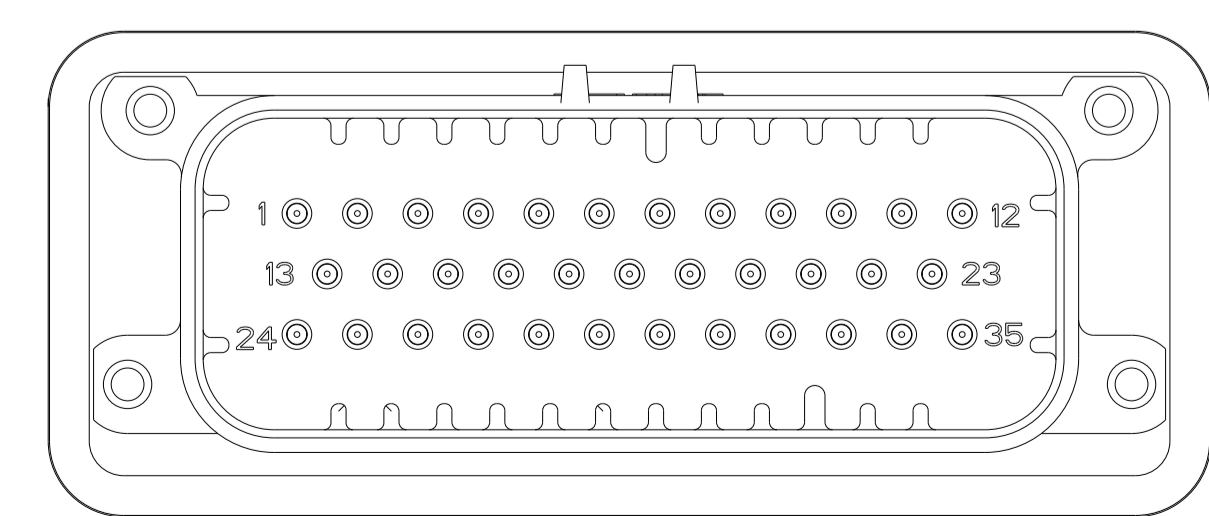
776163-2 & 1-776163-2  
 KEY LOCATION AS SHOWN  
 SCALE 2:1



776163-4 & 1-776163-4  
 KEY LOCATION AS SHOWN  
 SCALE 2:1



776163-5 & 1-776163-5  
 KEY LOCATION AS SHOWN  
 SCALE 2:1



1-776163-6  
 KEY LOCATION AS SHOWN  
 SCALE 2:1

THIS DRAWING IS A CONTROLLED DOCUMENT.		OWN R. VESTAL 31DEC2002	TE Connectivity
DIMENSIONS:		CHK D. CROWE 31DEC2002	
TOLERANCES UNLESS OTHERWISE SPECIFIED:		APVD D. CROWE 31DEC2002	
0 PLC ± 1 PLC ±0.2 2 PLC ± 3 PLC ± 4 PLC ± ANGLES ± FINISH ±		NAME	
MATERIAL		PRODUCT SPEC 108-1329	HEADER ASSEMBLY, 35 POSITION, RIGHT ANGLE, AMPSEAL
		APPLICATION SPEC 114-16016	RESTRICTED TO
		WEIGHT 40.45g	SIZE CAGE CODE DRAWING NO. A100779C=776163
		CUSTOMER DRAWING	SCALE 4:1 SHEET 2 OF 2 REV K1