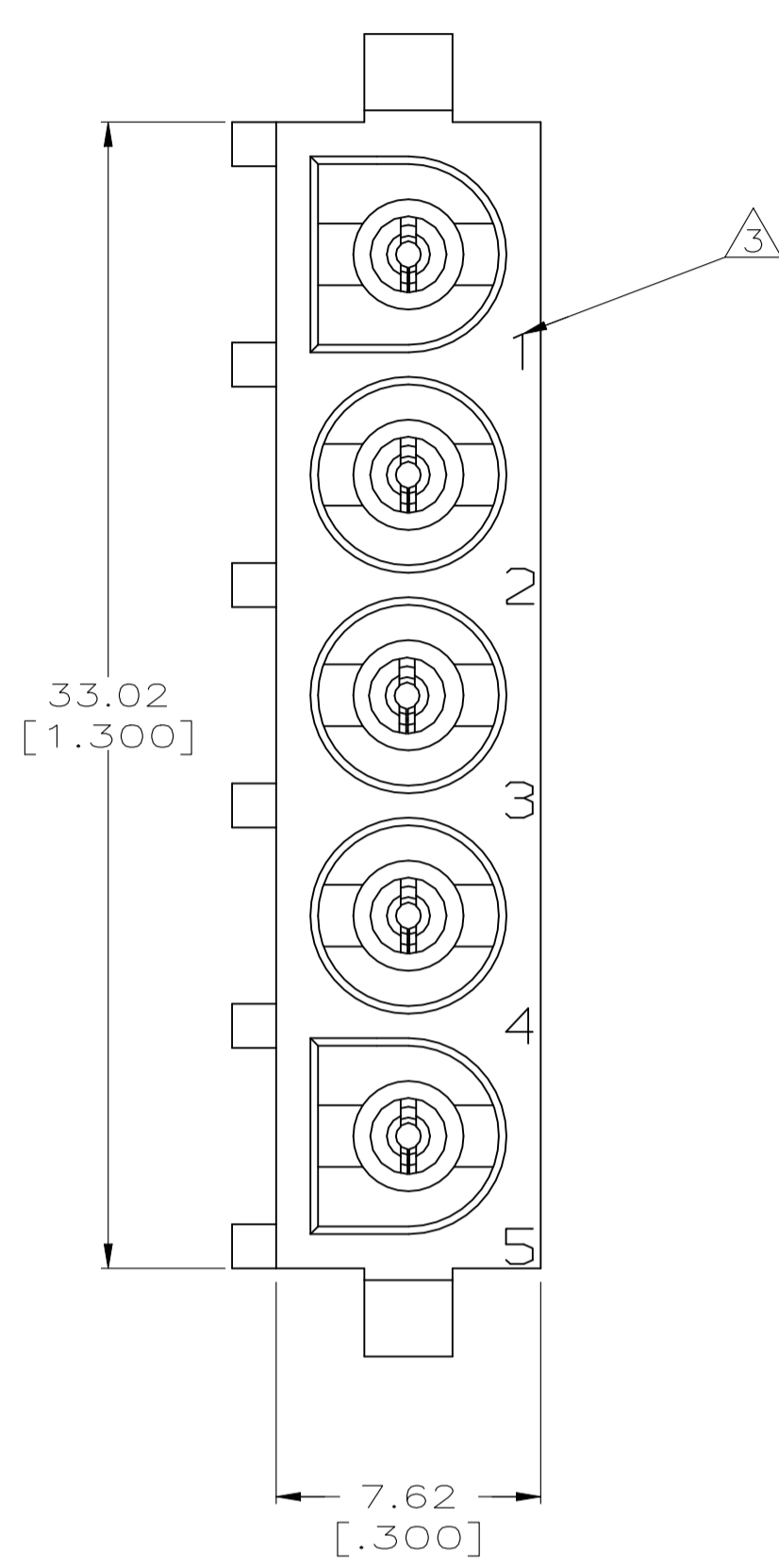
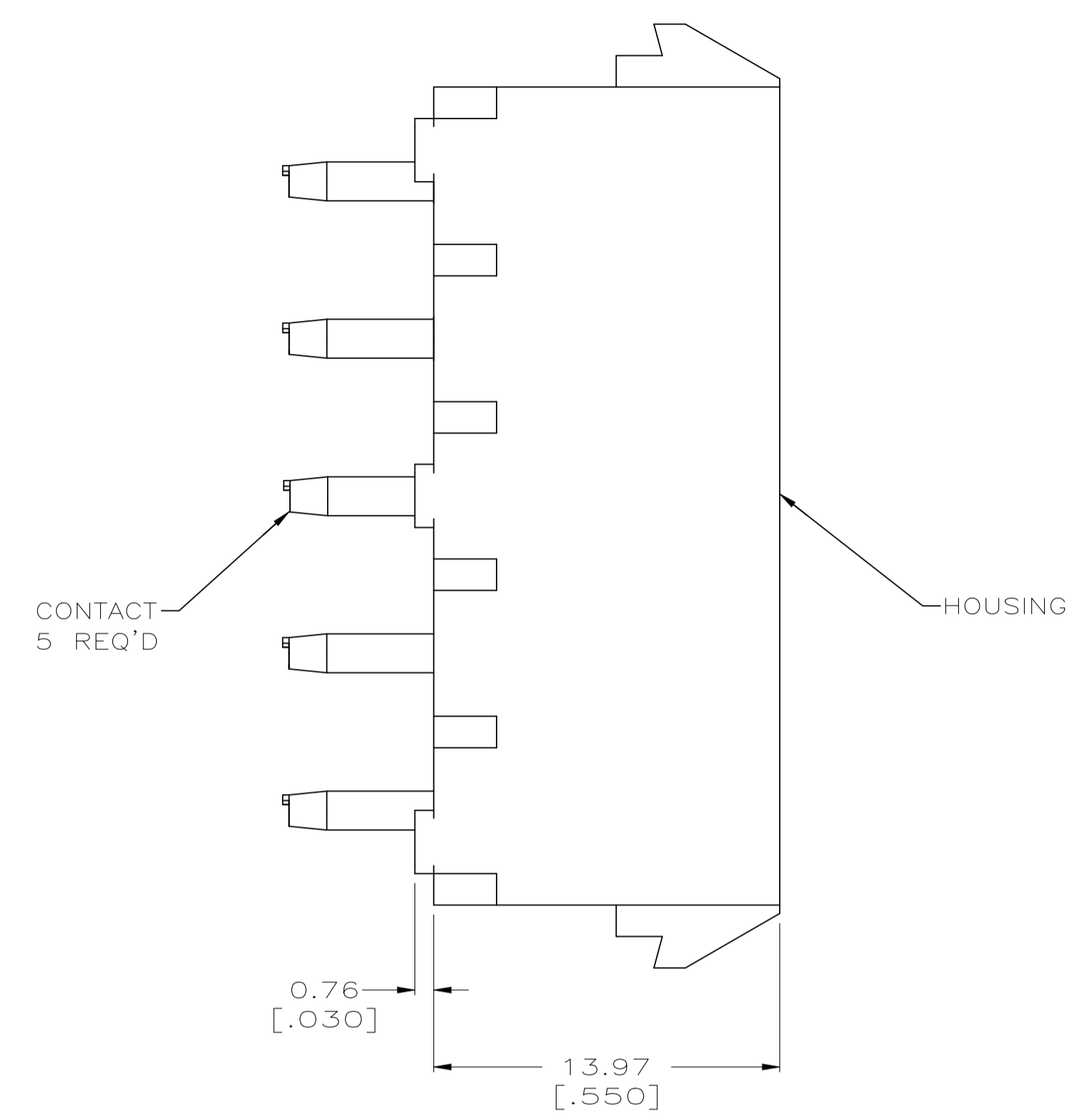
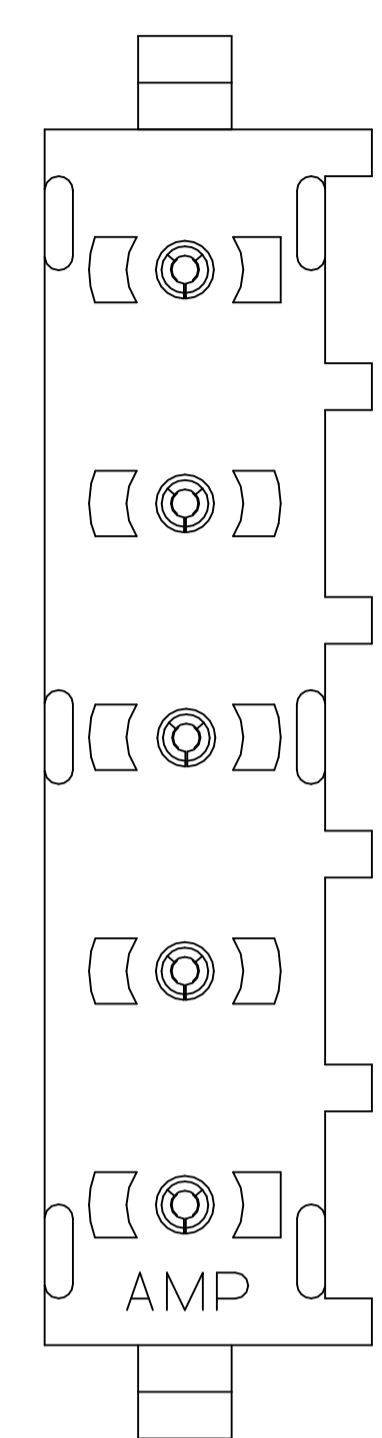


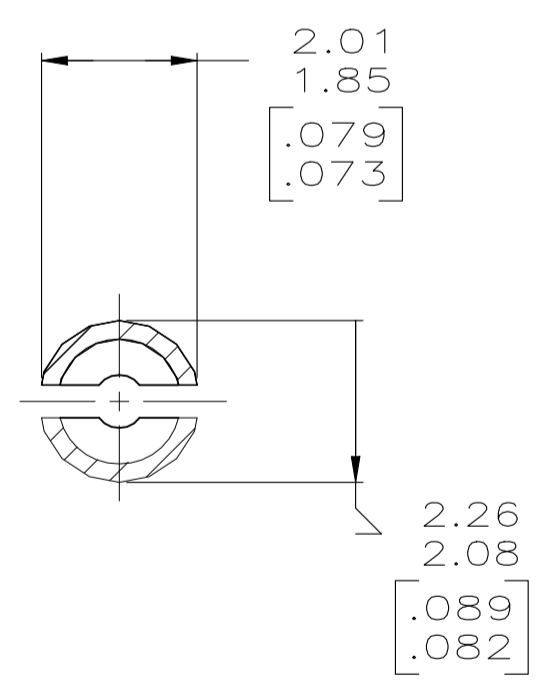
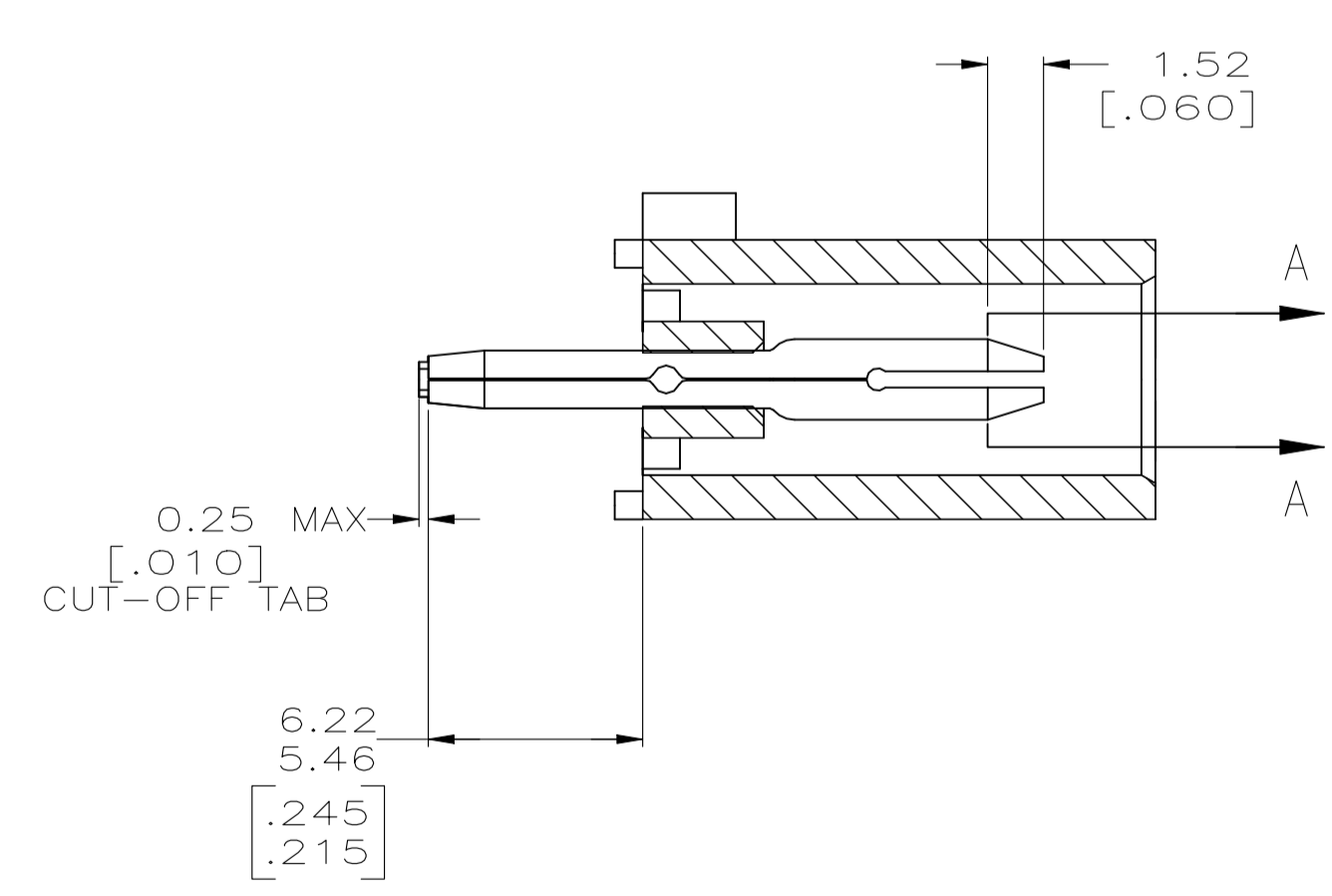
LOC		DIST		REV		ZONE		LTR		REVISIONS		DATE	APPD
CM	00									H1	REVISED PER ECR-21-117154	01AUG2022	PJ VS



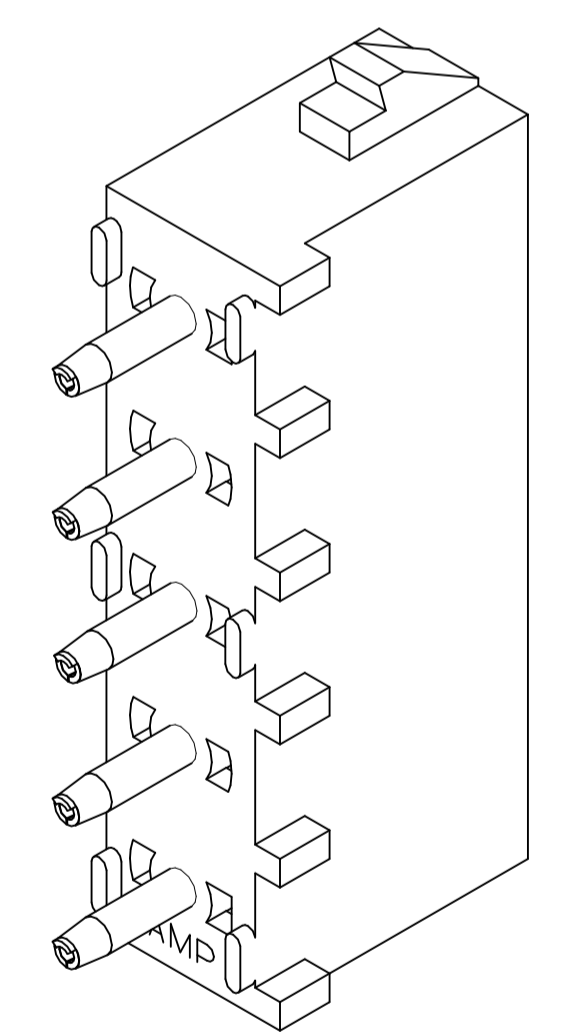
- PARTS COMPLY WITH AMP SOLDERABILITY SPECIFICATION 109-11-3.
- △ CIRCUIT IDENTIFICATION CHARACTERS ARE ADJACENT TO THE INDICATED CAVITIES, BUT LOCATION AND ORIENTATION MAY DIFFER FROM PRINT.
- DIMENSIONS IN BRACKETS ARE IN INCHES.
- DIMENSION SHOWN REPRESENT PRODUCT IN DRY CONDITION. ADDITIONAL 2% GROWTH DUE TO END USE LOCATION MOISTURE ABSORPTION MAY OCCUR AND SHOULD BE ACCOUNTED FOR.



RECOMMENDED MOUNTING HOLE PATTERN FOR 3.18 [.125] THICK P.C. BOARD



SECTION A-A SCALE 10:1



3-DIMENSIONAL MODEL NTS

METRIC

THIS DRAWING IS A CONTROLLED DOCUMENT FOR AMP INCORPORATED. IT IS SUBJECT TO CHANGE AND THE CONTROLLING ENGINEERING ORGANIZATION SHOULD BE CONTACTED FOR THE LATEST REVISION.

PHOSPHOR BRONZE, PRE-TIN	NYLON,UL94V-2,NATURAL	770111-1
PIN CONTACT MATERIAL AND FINISH	HOUSING MATERIAL	PART NO
DO NOT SCALE PRINT. UNLESS SPECIFIED	28-JAN-1999 B. LEWIS	AMP Incorporated Harrisburg, PA 17105-3608
DIMENSIONS IN mm [INCHES]	CHK 28-JAN-1999 R. SWING	
TOLERANCES ON :	APPD 28-JAN-1999 M. TRULL	
2 PLC DEC ± 0.13 [.005]	APPD 28-JAN-1999 M. TRULL	
3 PLC DEC ± -	APPD 28-JAN-1999 M. TRULL	
ANGLES ± -	PRODUCT SPEC -	NAME
MATERIAL	SEE TABLE	PIN HEADER ASSEMBLY, 5 CIRCUIT, UNIVERSAL MATE-N-LOK™
FINISH	SEE TABLE	SIZE
		CAGE CODE
		DRAWING NO
		D
		00779
		C-770111
		SCALE
		5:1
		SHEET
		10F 1