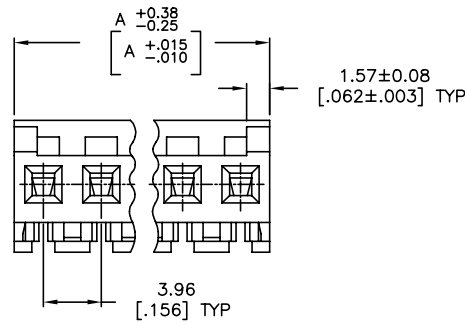
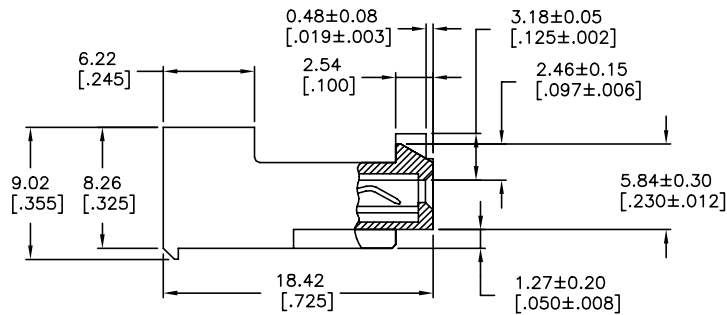
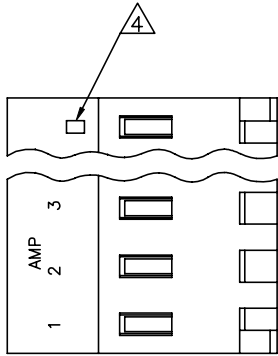


THIS DRAWING IS UNPUBLISHED. RELEASED FOR PUBLICATION  
 © COPYRIGHT - By - TE CONNECTIVITY ALL RIGHTS RESERVED.

LOC	DIST	REVISIONS					
CM	00	P	LTR	DESCRIPTION	DATE	DWN	APVD
		H		REVISED PER ECR-20-000822	28MAY2020	PC	SW



1 MATERIAL: CONNECTOR - NYLON UL94V-2 (RED) .  
 CONTACTS - 0.30[.012] THICK COPPER ALLOY  
 0.00076[.000030] GOLD THK OR 0.00008[.000003] MIN THK  
 GOLD FLASH OVER 0.00068[.000027] THK PALLADIUM NICKEL,  
 PER TE CONNECTIVITY'S DISCRETION. IN CONTACT  
 AREA WITH MATTE TIN FOR 644662-2  
 THRU 1-644662-4, MATTE WHISKER MITIGATED  
 TIN FOR 3-644662-2 THRU 4-644662-4  
 OVER NICKEL UNDERPLATE.

2 CONTACTS ACCEPT 22 AWG WIRE WITH 2.41[.095] MAX  
 INSULATION DIAMETER.

3 CONTACTS MUST ACCEPT 1.14±0.03[.045±.001] SQUARE  
 POST AND REMAIN LOCKED IN POSITION.

4 IDENTIFICATION NUMBER FOR LAST CIRCUIT MAY  
 NOT APPEAR ON ALL ASSEMBLIES.

5 DIMENSIONS IN BRACKETS ARE IN INCHES.

6 HOUSING FEATURES ARE: CLOSED END WITH LOCKING RAMP  
 AND POLARIZING TAB

7 OBSOLETE PARTS: OBSOLETE CIS STREAMLINING PER D.RENAUD/D.SINISI

	55.47	[2.184]	14	4-644662-4	
	47.55	[1.872]	12	4-644662-2	
	43.59	[1.716]	11	4-644662-1	
	39.62	[1.560]	10	4-644662-0	
	35.66	[1.404]	9	3-644662-9	
	31.70	[1.248]	8	3-644662-8	
	27.74	[1.092]	7	3-644662-7	
	23.77	[.936]	6	3-644662-6	
	19.81	[.780]	5	3-644662-5	
	15.85	[.624]	4	3-644662-4	
	11.89	[.468]	3	3-644662-3	
	7.92	[.312]	2	3-644662-2	
△	SUPERSEDED BY 4-644662-4	55.47	[2.184]	14	4-644662-4
△	SUPERSEDED BY 4-644662-2	47.55	[1.872]	12	4-644662-2
△	SUPERSEDED BY 4-644662-1	43.59	[1.716]	11	4-644662-1
	OBSOLETE	39.62	[1.560]	10	4-644662-0
	OBSOLETE	35.66	[1.404]	9	3-644662-9
	OBSOLETE	31.70	[1.248]	8	3-644662-8
△	SUPERSEDED BY 3-644662-7	27.74	[1.092]	7	3-644662-7
	OBSOLETE	23.77	[.936]	6	3-644662-6
	OBSOLETE	19.81	[.780]	5	3-644662-5
	OBSOLETE	15.85	[.624]	4	3-644662-4
	OBSOLETE	11.89	[.468]	3	3-644662-3
	OBSOLETE	7.92	[.312]	2	3-644662-2

DIM A	NO OF CIRCUITS	PART NO
-------	----------------	---------

THIS DRAWING IS A CONTROLLED DOCUMENT.		DWN N. GANNON 03 JUL 91	TE Connectivity	
DIMENSIONS: mm [INCHES]		CHK R. SWING 03 JUL 91	MTA-156 CONNECTOR ASSEMBLY, 22 AWG, STANDARD	
TOLERANCES UNLESS OTHERWISE SPECIFIED:		APVD G. MILLER 03 JUL 91	RESTRICTED TO	
0 PLC ± -	1 PLC ± -	PRODUCT SPEC 108-1051	SIZE A2	CAGE CODE 00779
2 PLC ± -	3 PLC ± 0.13 [0.005]	APPLICATION SPEC 114-1020	DRAWING NO C=644662	SCALE 4:1
4 PLC ± -	ANGLES ± -	WEIGHT -	SHEET 1 of 1	REV H
MATERIAL △		FINISH △		CUSTOMER DRAWING