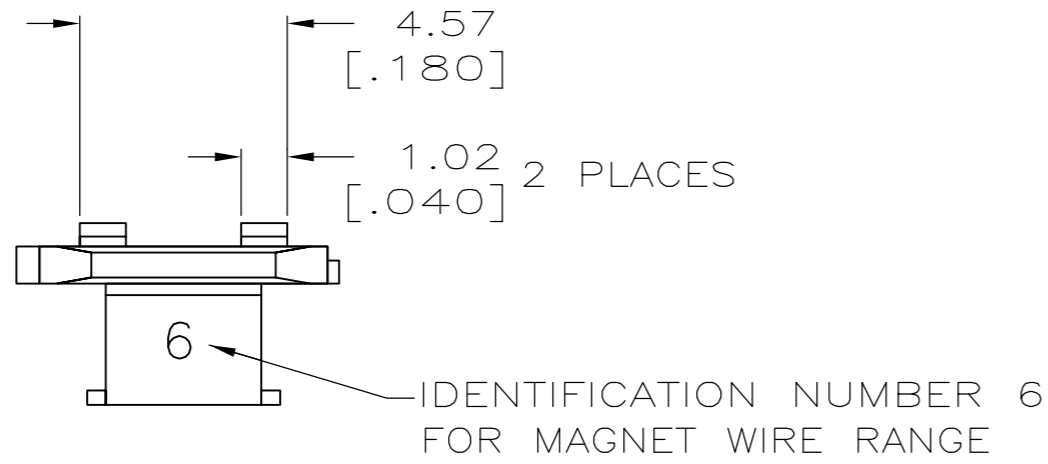
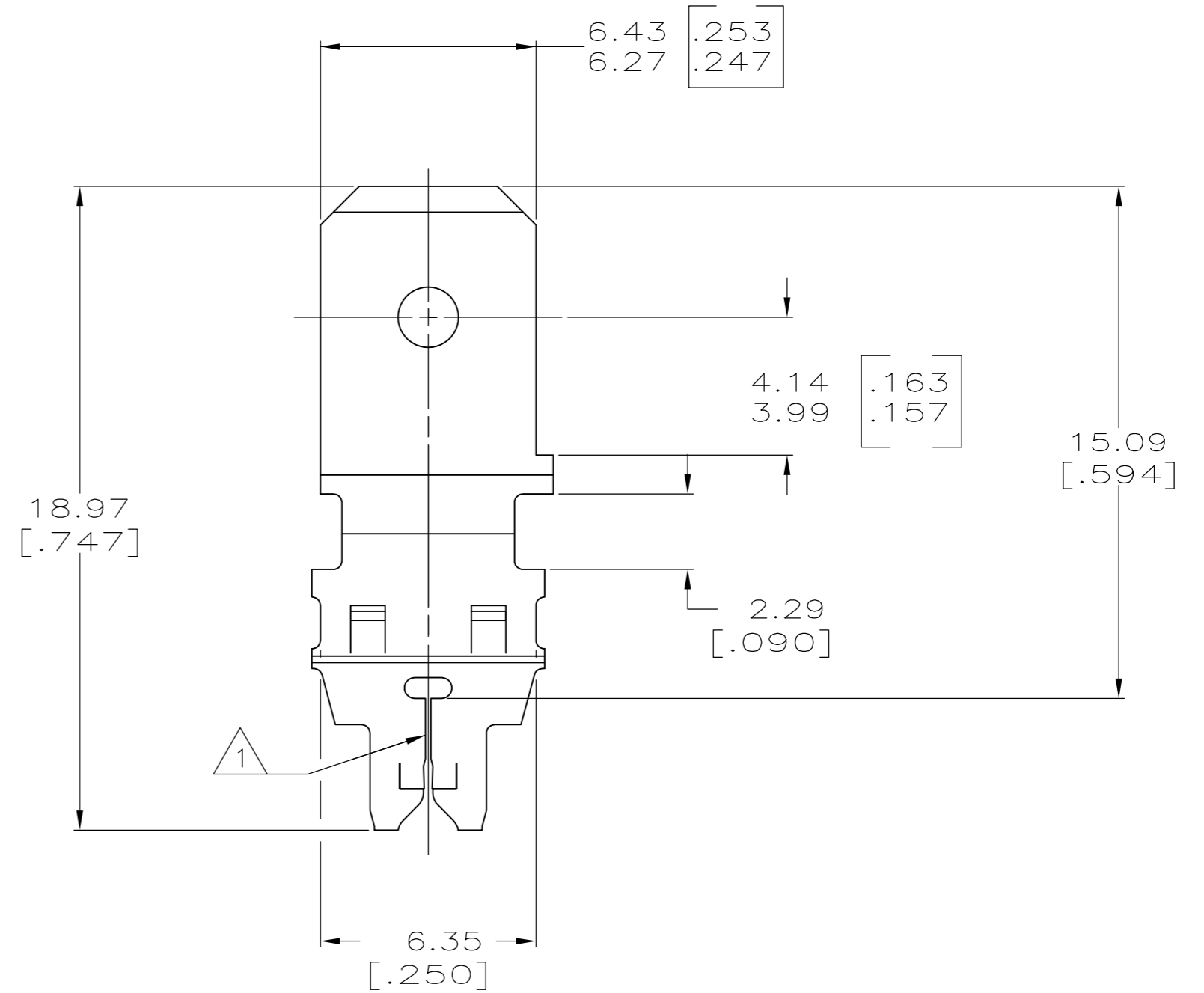
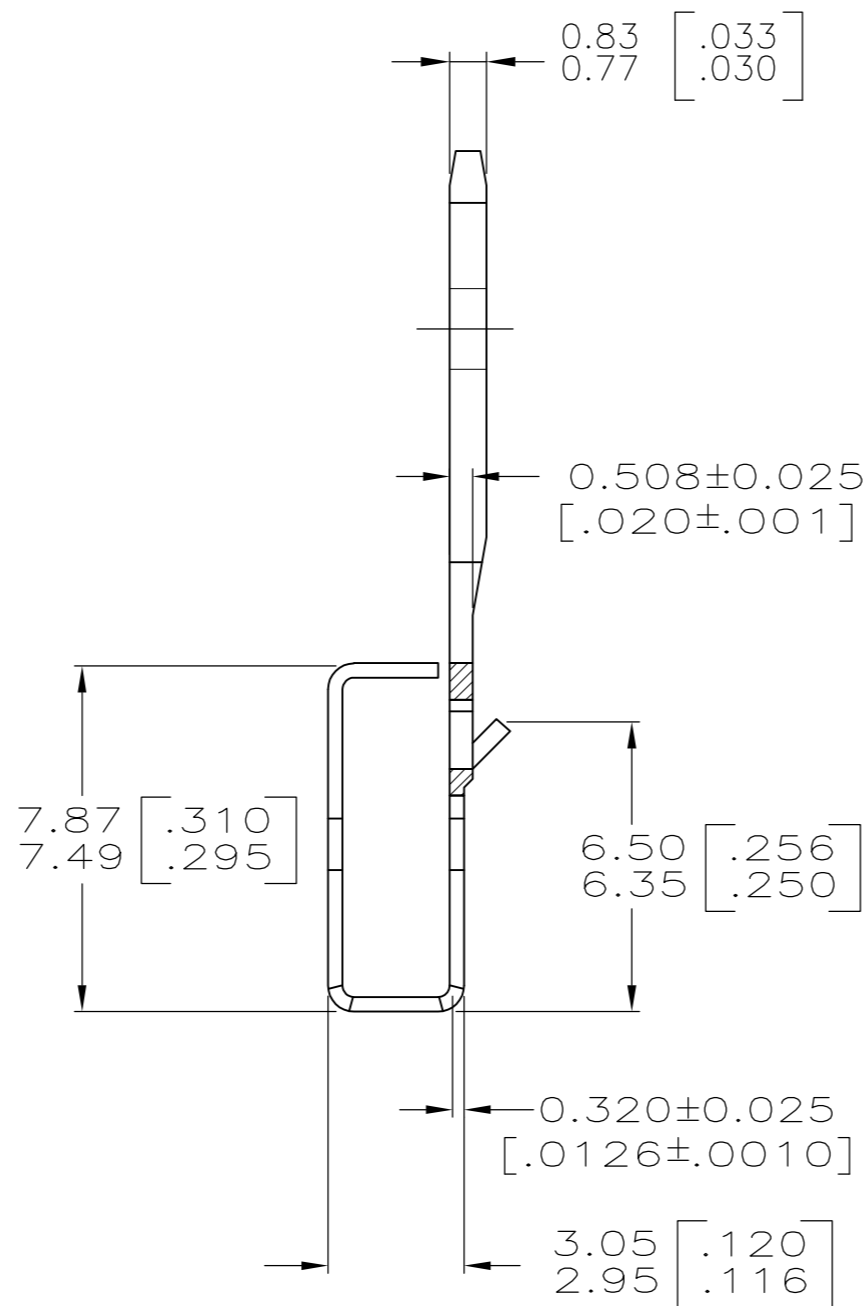
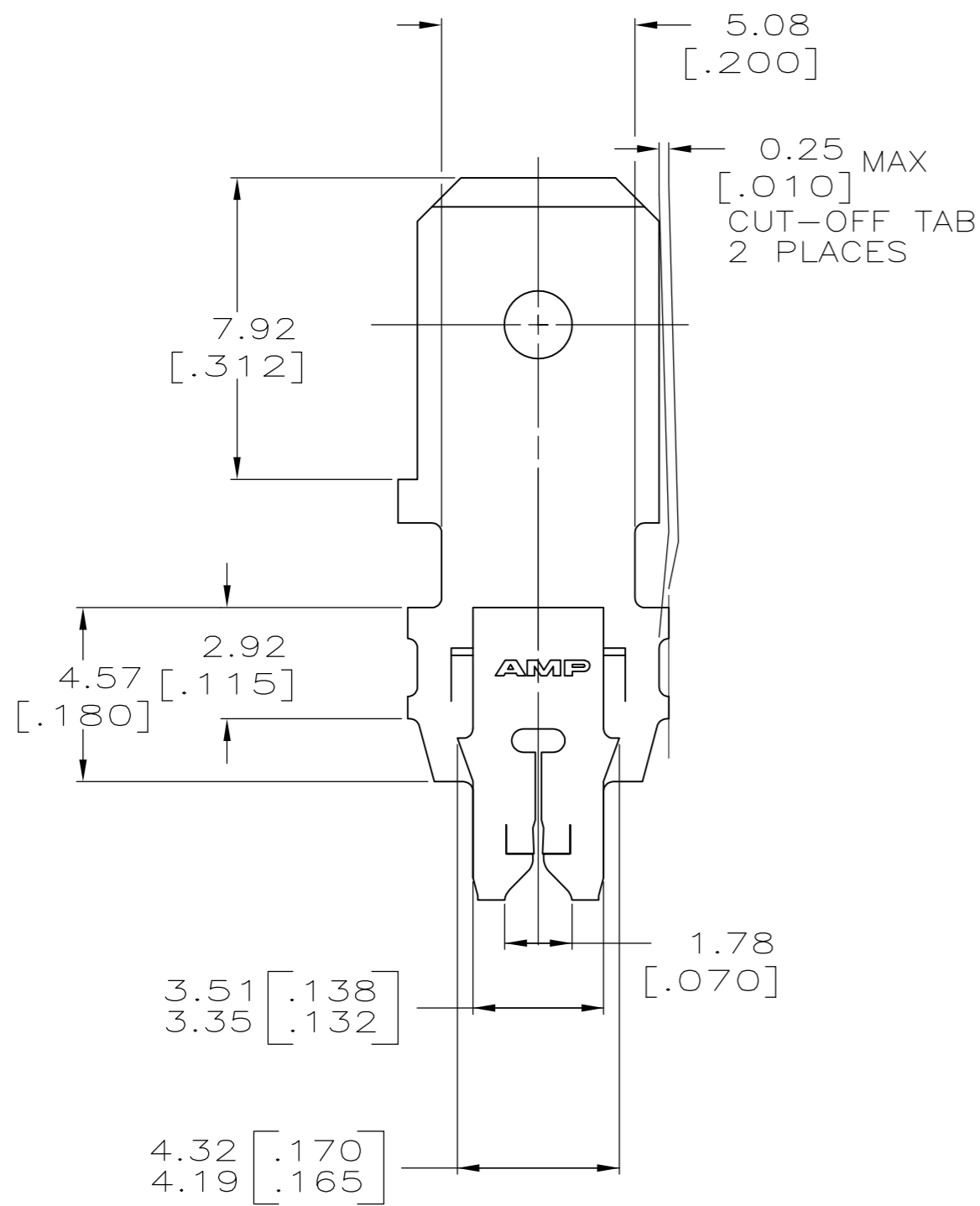


THIS DRAWING IS UNPUBLISHED. RELEASED FOR PUBLICATION
 © COPYRIGHT - By - ALL RIGHTS RESERVED.

LOC	DIST	REVISIONS			
P	LTR	DESCRIPTION	DATE	DWN	APVD
AF	50	B1	ECR-15-005665	10AUG2015	BDA/PKS



1 SLOT ACCEPTS 0.25-0.36mm [#30-#27] AWG COPPER MAGNET WIRE.
 SLOT ACCEPTS 0.32-0.45mm [#28-#25] AWG ALUMINUM MAGNET WIRE.
 ALUMINUM WIRE RANGE APPLIES FOR POST-TIN PLATED VERSIONS ONLY.
 2 WIRES OF THE SAME SIZE MAX PER SLOT.



63898

63898-1
 PART NUMBER

THIS DRAWING IS A CONTROLLED DOCUMENT.		DWN MICHAEL S. FEHER 15APR96														
DIMENSIONS: mm [INCHES]		CHK RICHARD GRZYBOWSKI 15APR96														
TOLERANCES UNLESS OTHERWISE SPECIFIED:		APVD NELSON E. NEFF 15APR96	NAME TAB, 6.35[.250] FASTON,™ LOOSE PIECE, MAG-MATE™													
<table border="0"> <tr><td>0 PLC</td><td>± -</td></tr> <tr><td>1 PLC</td><td>± -</td></tr> <tr><td>2 PLC</td><td>± 0.25[.010]</td></tr> <tr><td>3 PLC</td><td>± -</td></tr> <tr><td>4 PLC</td><td>± -</td></tr> <tr><td>ANGLES</td><td>± 1°</td></tr> </table>		0 PLC	± -	1 PLC	± -	2 PLC	± 0.25[.010]	3 PLC	± -	4 PLC	± -	ANGLES	± 1°	PRODUCT SPEC 108-2012	SIZE A2	CAGE CODE 00779
0 PLC	± -															
1 PLC	± -															
2 PLC	± 0.25[.010]															
3 PLC	± -															
4 PLC	± -															
ANGLES	± 1°															
MATERIAL 4M PRE-MILLED BRASS		APPLICATION SPEC 114-2094	DRAWING NO C=63898	RESTRICTED TO -												
FINISH 0.002032[.000080] MIN TIN PLATE		WEIGHT -	SCALE 6:1	SHEET 1 OF 1												
CUSTOMER DRAWING			REV B1													