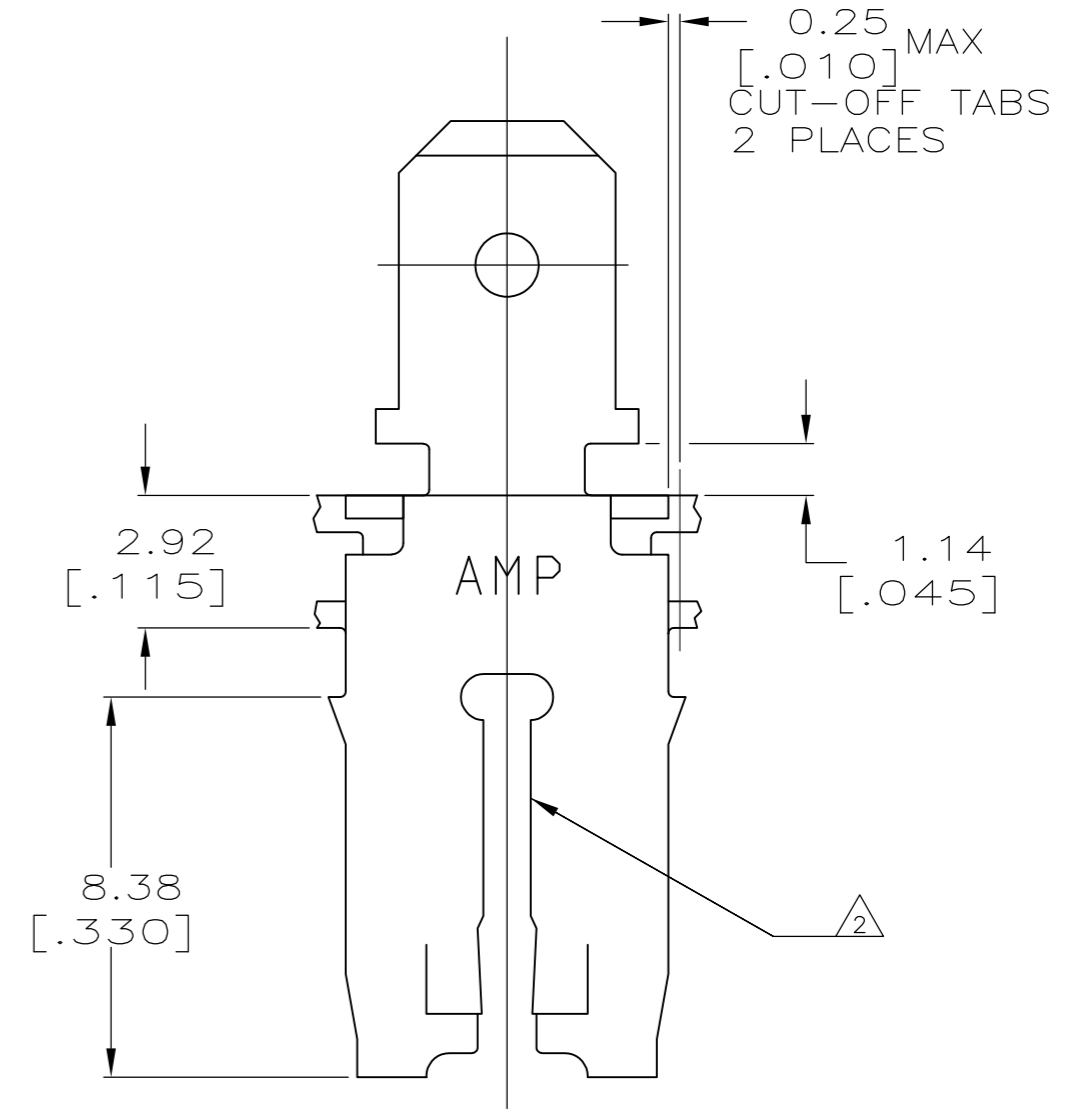
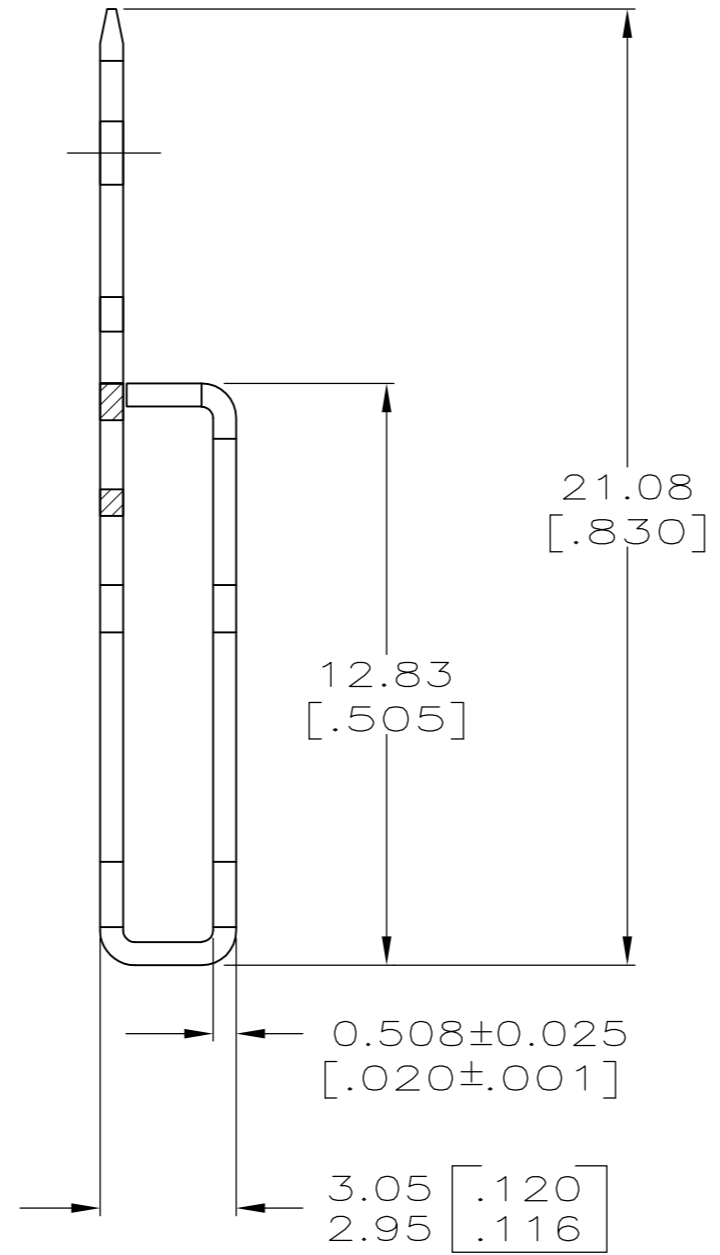
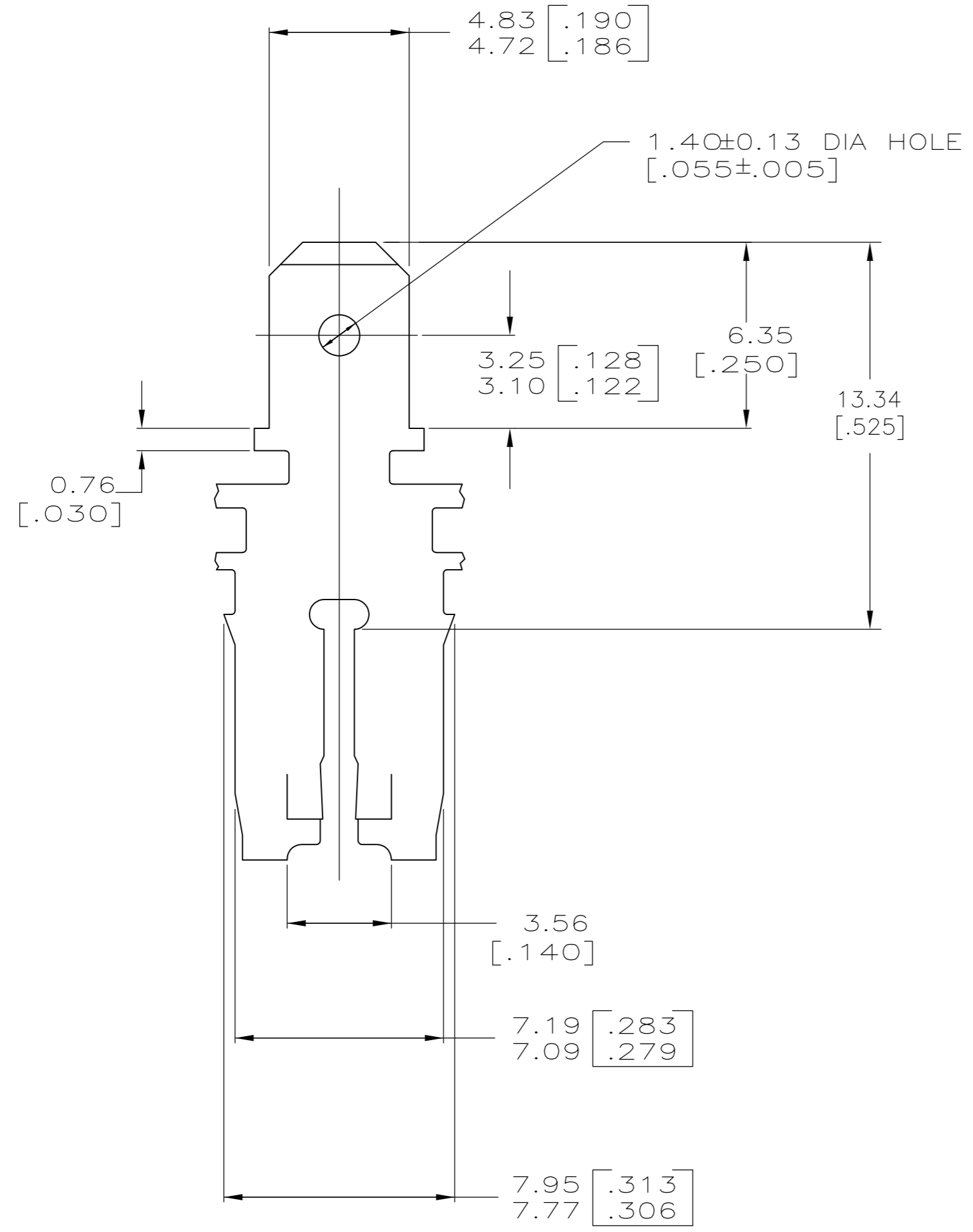
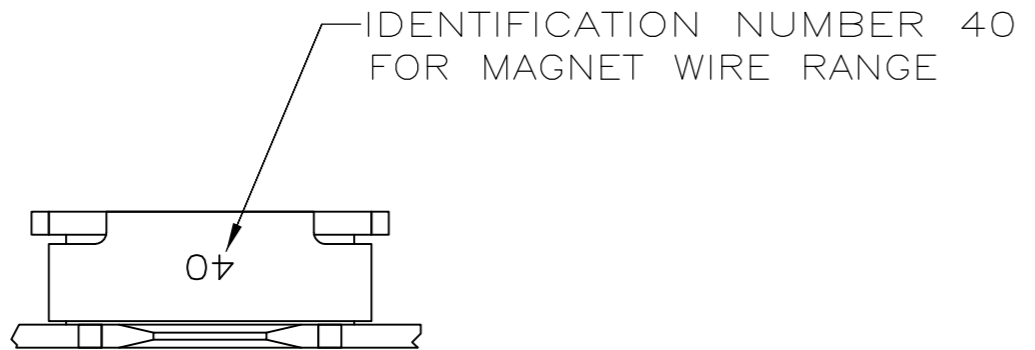


THIS DRAWING IS UNPUBLISHED. RELEASED FOR PUBLICATION
 © COPYRIGHT - By - ALL RIGHTS RESERVED.

LOC	DIST	REVISIONS			
P	LTR	DESCRIPTION	DATE	DWN	APVD
AF	50	A2	ECR-15-005665	10AUG2015	BDA PKS



- 1 CONTINUOUS STRIP ON REELS WITH TERMINALS LOCATED ON 8.38 [.330] CENTERS.
- 2 SLOT TERMINATES A SINGLE MAGNET WIRE ONLY. COPPER RANGE: 1.45-1.29mm [#15-#16] AWG. ALUMINUM RANGE: 1.37-1.54mm [#15.5-#14.5] AWG. ALUMINUM WIRE RANGE APPLIES FOR POST-TIN PLATED VERSIONS ONLY.
- 3 AFTER INSERTION INTO PLASTIC HOLDER TAB PORTION MUST BE BENT OVER 45° TO 90° OR POTTED-IN TO PREVENT PULL-OUT WHEN MATING RECEPTACLE IS DISCONNECTED.

63762-1
PART NO

THIS DRAWING IS A CONTROLLED DOCUMENT.		DWN MICHAEL S. FEHER 02/DEC/93		
DIMENSIONS: mm [INCHES]		CHK PHILLIP M. FORTNEY 07/DEC/93		
TOLERANCES UNLESS OTHERWISE SPECIFIED:		APVD NELSON E. NEFF 08/DEC/93	NAME BDA	
0 PLC ± -		PRODUCT SPEC 108-2012	4.75 [.187] FASTON™ MAG-MATE™	
1 PLC ± -		APPLICATION SPEC 114-2066	SIZE A2	CAGE CODE 00779
2 PLC ± 0.25 [.010]		WEIGHT -	DRAWING NO 63762	RESTRICTED TO -
3 PLC ± -		SCALE 6:1		
4 PLC ± -		SHEET 1 OF 1		
ANGLES ± -		REV A2		
FINISH 0.002032 [.000080] MIN TIN		CUSTOMER DRAWING		