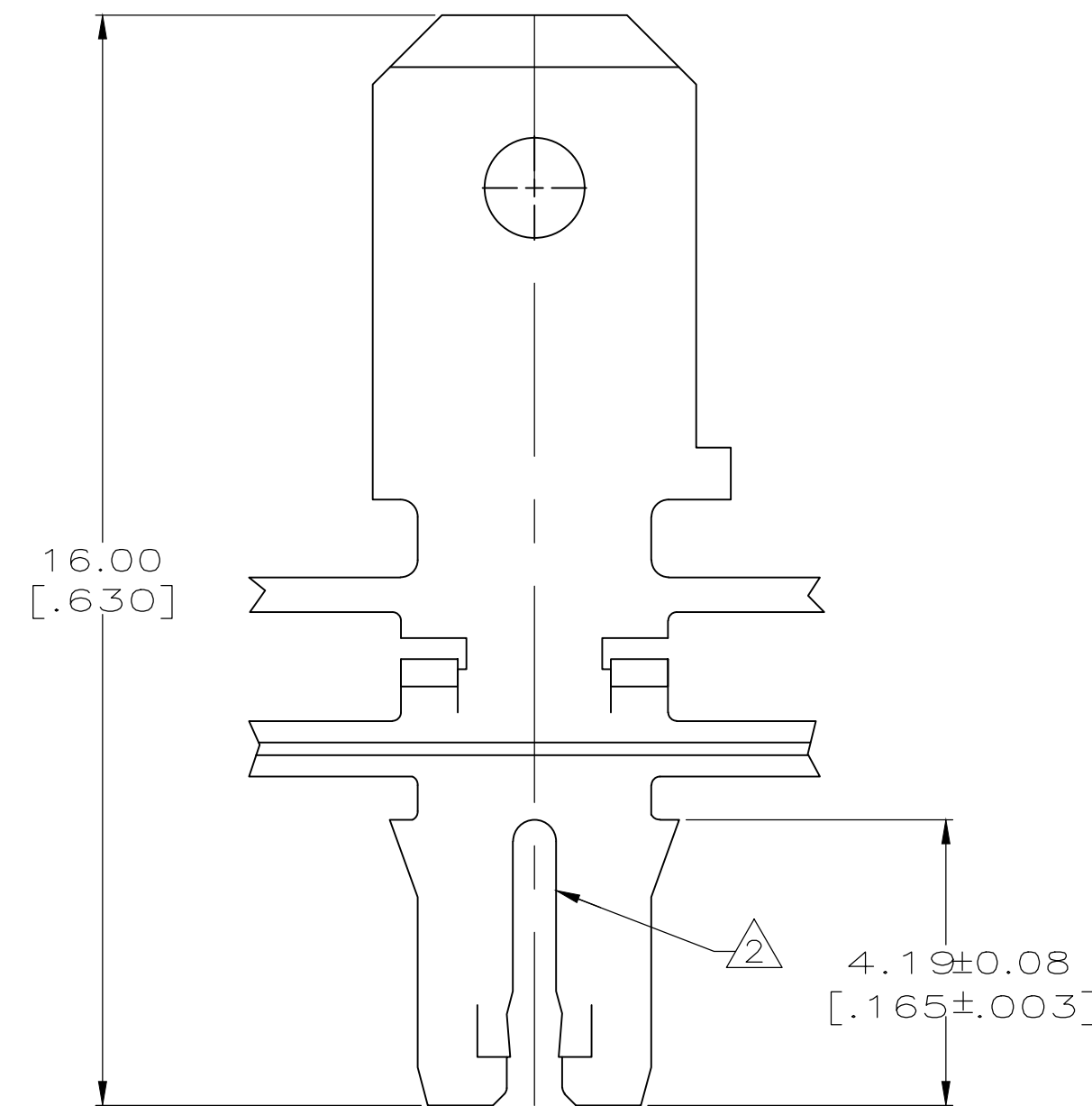
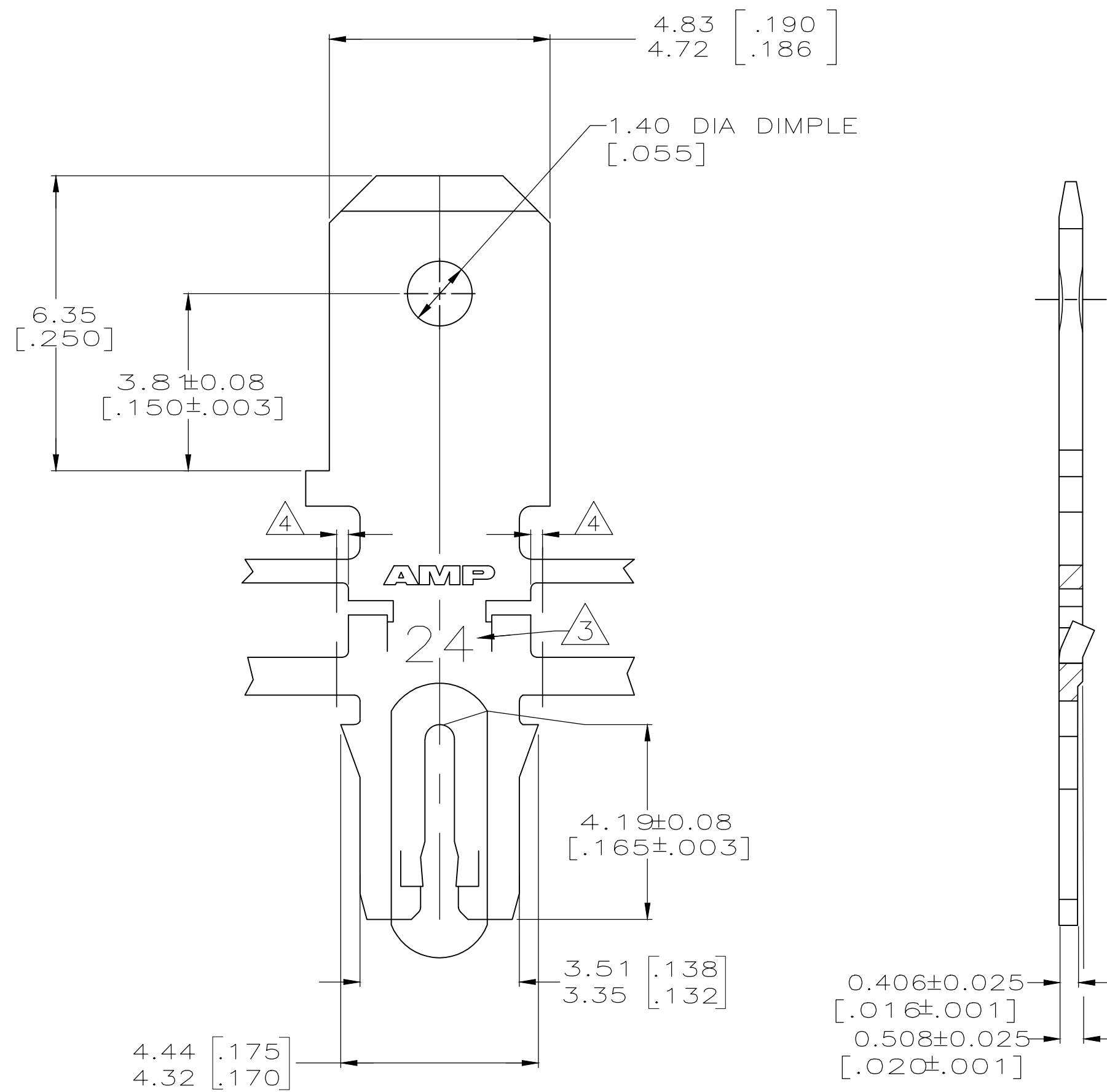


THIS DRAWING IS UNPUBLISHED. RELEASED FOR PUBLICATION
 © COPYRIGHT - By - ALL RIGHTS RESERVED.

REVISIONS				
P	LTR	DESCRIPTION	DATE	APVD
G2		REVISED PER ECR-18-018655	11DEC2018	BW SV

- 1 CONTINUOUS STRIP ON REELS WITH TERMINALS LOCATED ON 6.86±0.08 [.270±.003] CENTERS
- 2 SLOT ACCEPTS 0.91-1.15mm [#19-#17] AWG COPPER MAGNET WIRE. ONE WIRE MAX PER SLOT
- 3 IDENTIFICATION NUMBER 24 FOR THE MAGNET WIRE SLOT SIZE
- 4 0.25[.010] MAX CARRIER CUT-OFF TABS
- 5 PRE-PRODUCTION - F.A.S.R. REQUIRED.



OBSOLETE	082 PRE-MILLED BRASS	5 63734-2
	4M PRE-MILLED BRASS	63734-1
	MATERIAL	PART NUMBER

THIS DRAWING IS A CONTROLLED DOCUMENT.		DWN L.A.MAYER 9-1-93	STE TE Connectivity Ltd.	
DIMENSIONS: mm[INCHES]		CHK M.S. FEHER 9-1-93		
TOLERANCES UNLESS OTHERWISE SPECIFIED:		APVD A. HUNT III 9-1-93	NAME	
0 PLC ± -		PRODUCT SPEC	TAB, 4.75 [.187] FASTON,™	
1 PLC ± -		APPLICATION SPEC	MAG-MATE™ Slim Line	
2 PLC ± 0.13 [.005]		108-1484	SIZE	CAGE CODE
3 PLC ± -		114-2140	A2	00779
4 PLC ± -		FINISH	DRAWING NO	RESTRICTED TO
ANGLES ± -		0.002032 [.000080]	C=63734	-
MATERIAL SEE TABLE		MIN TIN PLATE	WEIGHT	SCALE
			-	10:1
		CUSTOMER DRAWING	SHEET	REV
			1 OF 1	G2