

THIS DRAWING IS UNPUBLISHED. RELEASED FOR PUBLICATION  
 © COPYRIGHT - By - ALL RIGHTS RESERVED.

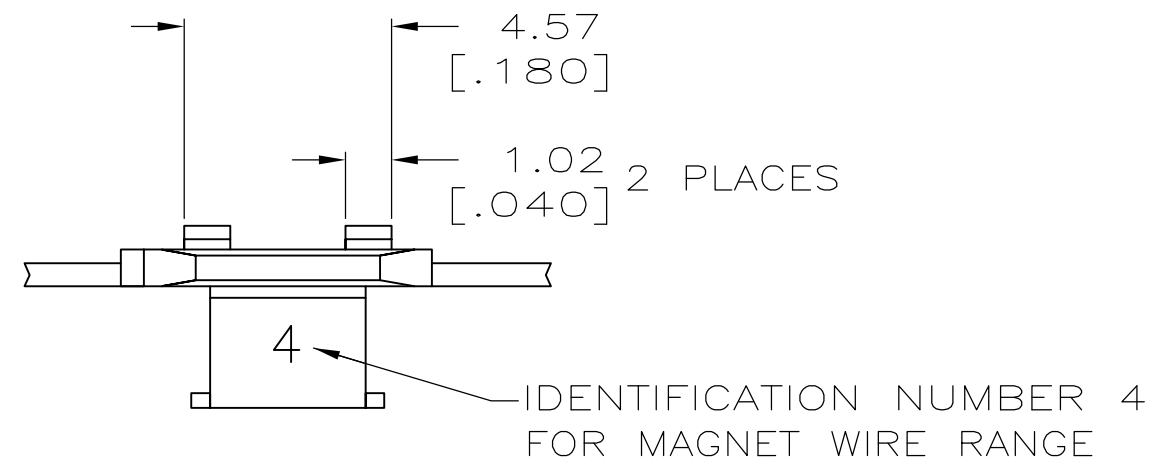
LOC	DIST	REVISIONS			
P	LTR	DESCRIPTION	DATE	DWN	APVD
AF	50	J1	ECR-13-017177	05NOV13	PKS RRP

D

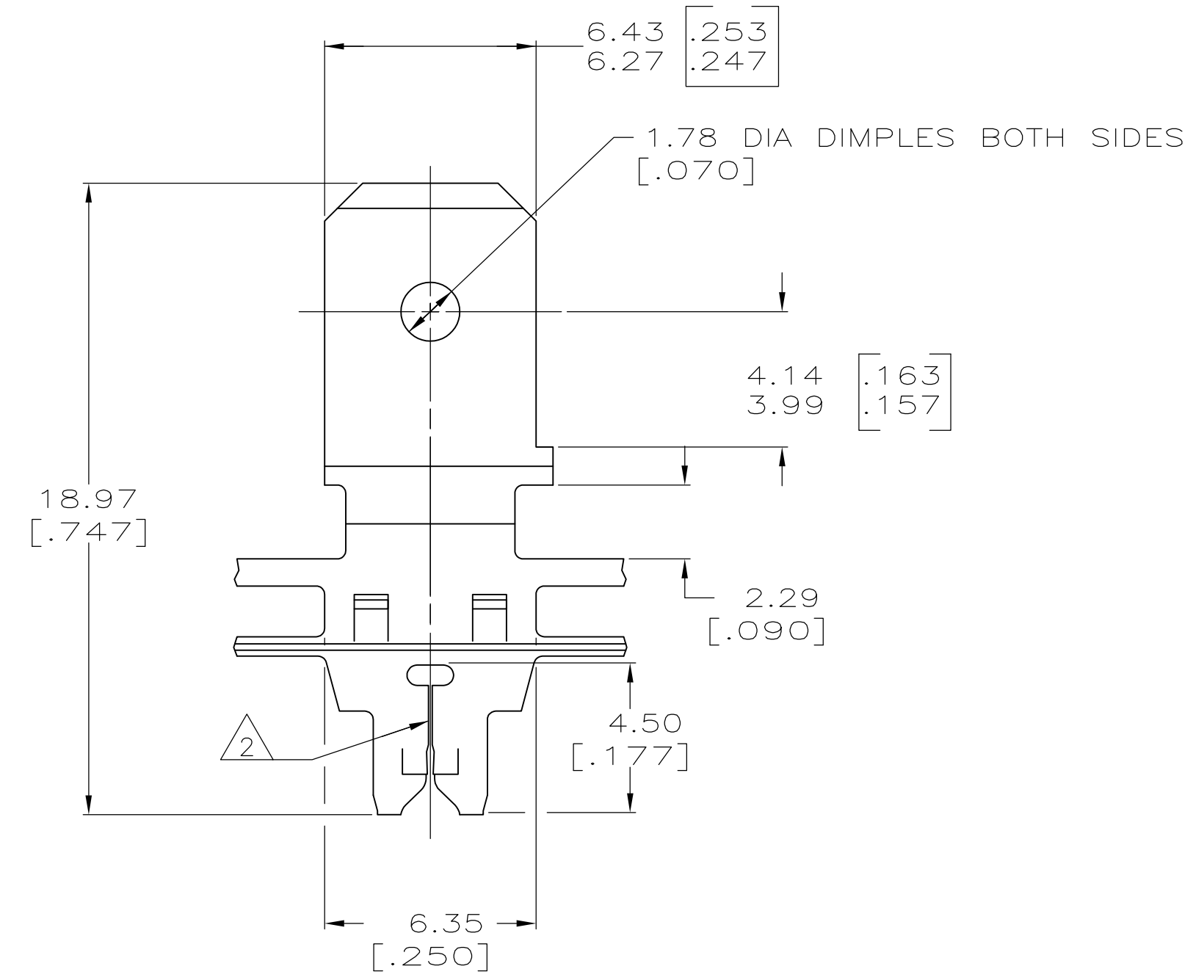
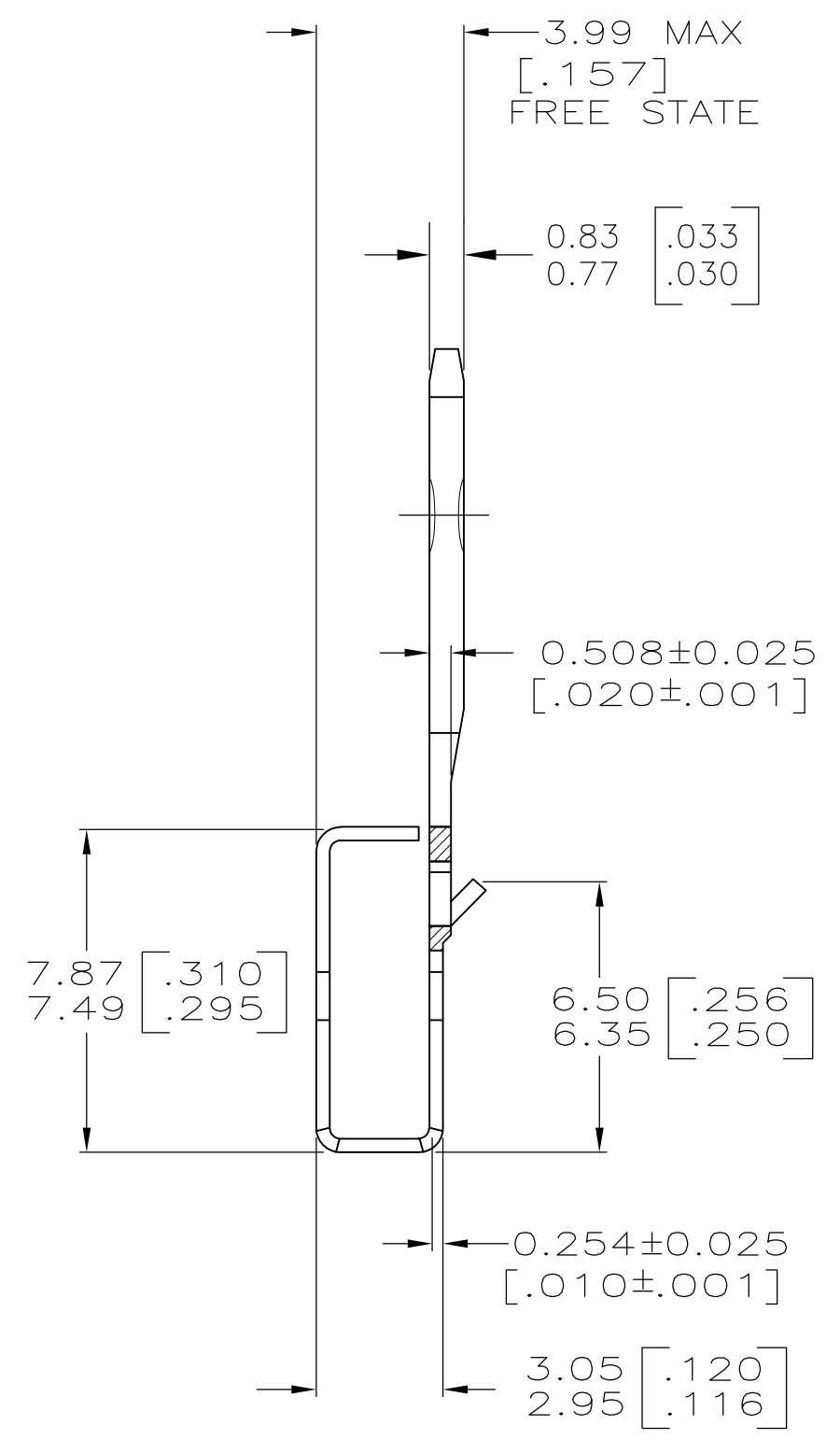
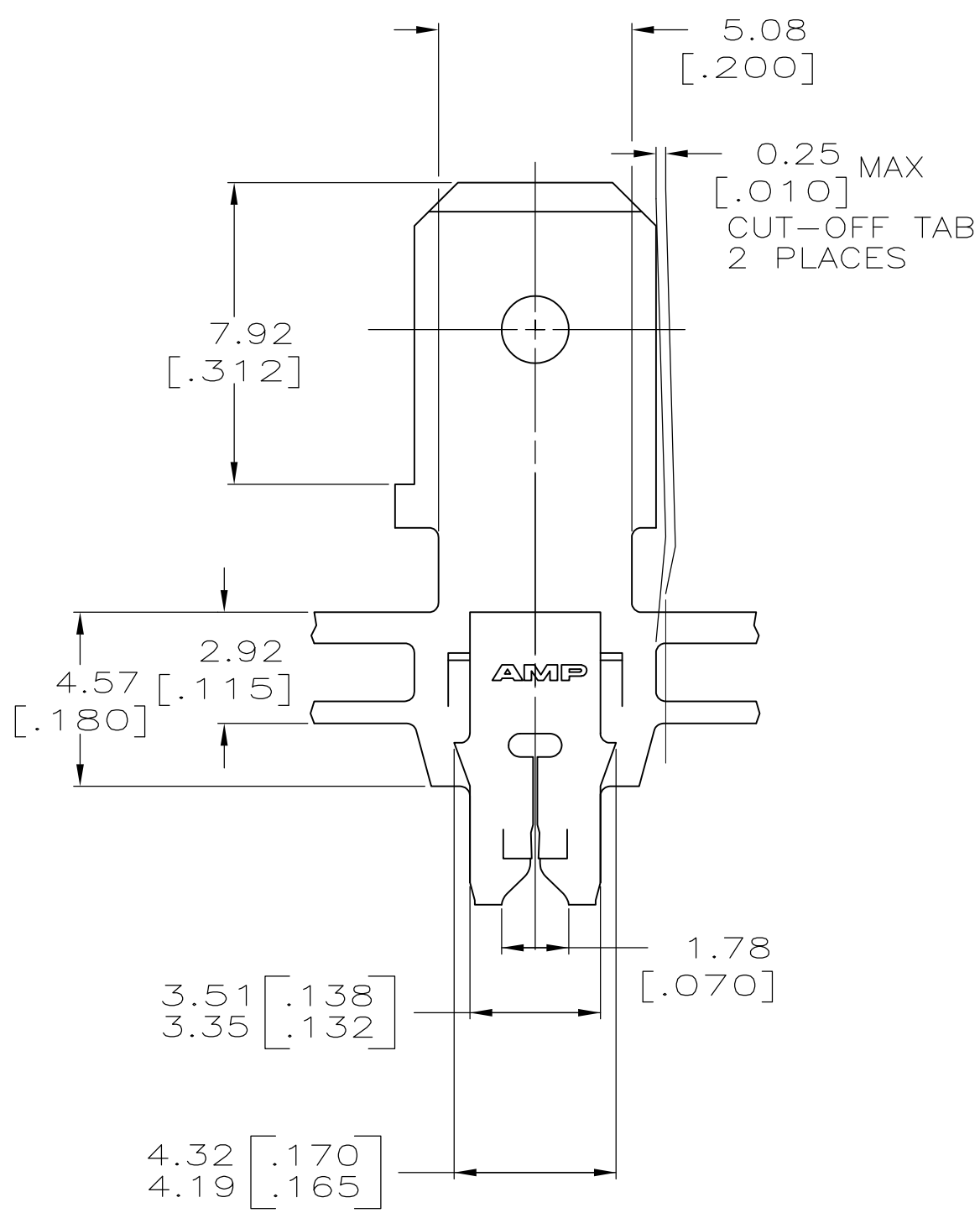
C

B

A



- 1 CONTINUOUS STRIP ON REELS WITH TERMINALS LOCATED ON 8.38±0.08 [.330±.003] CENTERS.
- 2 SLOT ACCEPTS 0.18-0.23mm [#33-#31] AWG COPPER MAGNET WIRE.  
2 WIRES OF THE SAME SIZE MAX PER SLOT.
- 3 TIN PLATED



D

C

B

A

OBSOLETE	3	082 PRE-MILLED BRASS	63133-3
	3	4M PRE-MILLED BRASS	63133-2
	3	4M PRE-MILLED BRASS	63133-1
	FINISH	MATERIAL	PART NO

THIS DRAWING IS A CONTROLLED DOCUMENT.

DWN	12/AUG/94	MICHAEL S. FEHER	
CHK	15/AUG/94	JEFF R. RUTH	
APVD	15/AUG/94	NELSON E. NEFF	
NAME	TE Connectivity		
DIMENSIONS:	TOLERANCES UNLESS OTHERWISE SPECIFIED:	PRODUCT SPEC	TAB,
INCHES	0 PLC ± -	108-2012	6.35 [.250] FASTON™
	1 PLC ± -	APPLICATION SPEC	300 SERIES MAG-MATE™
	2 PLC ± 0.25 [.010]	114-2094	RESTRICTED TO
	3 PLC ± -	WEIGHT -	SIZE CAGE CODE DRAWING NO
	4 PLC ± -	A2 00779 C=63133	SCALE 6:1 SHEET 1 of 1 REV J1
	ANGLES ± -	CUSTOMER DRAWING	
MATERIAL	FINISH		
SEE TABLE	SEE TABLE		