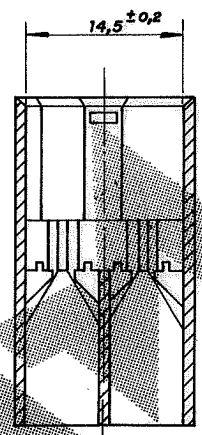
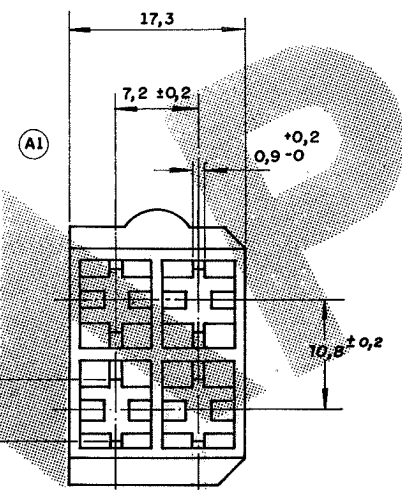
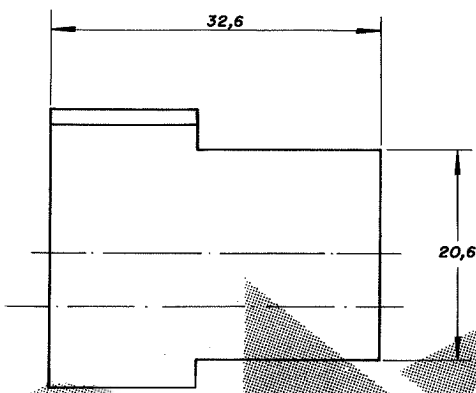
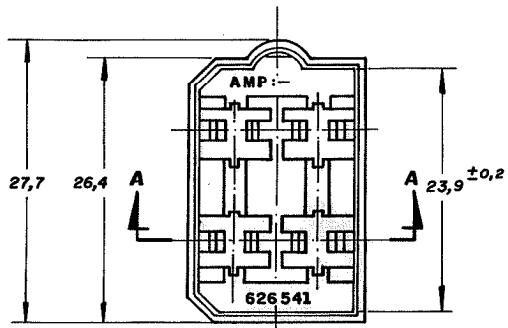


C 626 541

DO NOT SCALE  
DIMENSIONS IN

**METRIC**



SECÇÃO A: A

① RAW MATERIAL ACCORDING TO IEC 60335-1, GWEPT 750°C WITHOUT FLAME.  
② OBSOLETE PARTS; OBSOLETE CIS STREAMLINING PER D.RENAUD/D.SINISI

OBSOLETE

NATURAL	PA 6.6 V-0	2	-0
LARANJA		2	-7
MARROM		2	-6
CINZA		2	-9
PRETO		2	-4
AMARELO		2	-3
AZUL		2	-2
VERDE		2	-1
VERMELHO LARANJA	PA 6.6	2	-626 541 - 0
MARROM			-9
CINZA			-8
PRETO			-7
AMARELO			-6
AZUL			-5
VERDE			-4
VERMELHO TINGIDO			-3
NATURAL	POLIAMIDA 6.6		-2
			-1

OTHER TREATMENT				FINISH		MATERIAL		PART NUMBER	
CUSTOMER DWG for REFERENCE ONLY				THIS DRAWING IS UNPUBLISHED RELEASED FOR PUBLICATION		BY AMP DO BRASIL LTDA S.P. ALL INTERNATIONAL RIGHTS RESERVED AMP PRODUCTS MAY BE COVERED BY U.S. AND FOREIGN PATENTS AND/OR PATENTS PENDING.		19	
				TOLERANCES UNLESS OTHERWISE STATED		INS. DIA. RANGE		WIRE RANGE	
				DEC. ± 0,4		///		///	
				ANGLES ± 1°		///		///	
C	REVISED PER ECN 23-193366	WLS	BHC	10JAN23	DR. Paulo S.B. Agosto		AMP do BRASIL LTDA. São Paulo, Brasil		
B2	REVISED PER ECN-22-135694	WLS	EW	21JAN2022	18-88				
B1	ECO-09-026444	KK	AEG	NOV09	CHK Helio Agost. 21.88				
B	REVISED LE 10.0081/05	H.C.	H.C.	05.Apr.05	DE				
A1	REVISADO	Briz	WLS	6.2.92					
A	REDESENHADO	P.S.B	WLS	Agos 78-88			DESCRIPTION <b>4 WAY FASTIN-ON TAB HOUSING</b>		
ISS	REVISION RECORD	DR	CHK	DATE	APP.	A3		DWG NO C 626 541	
								SHEET 1 of 1	