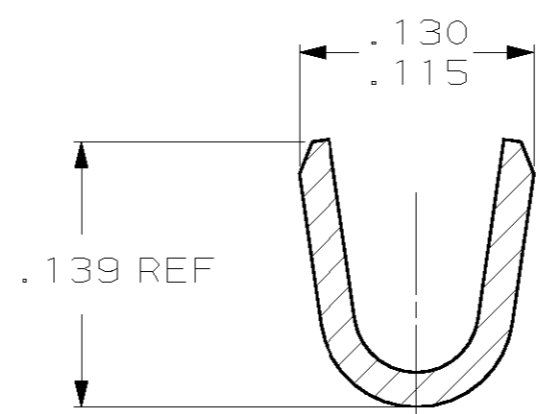
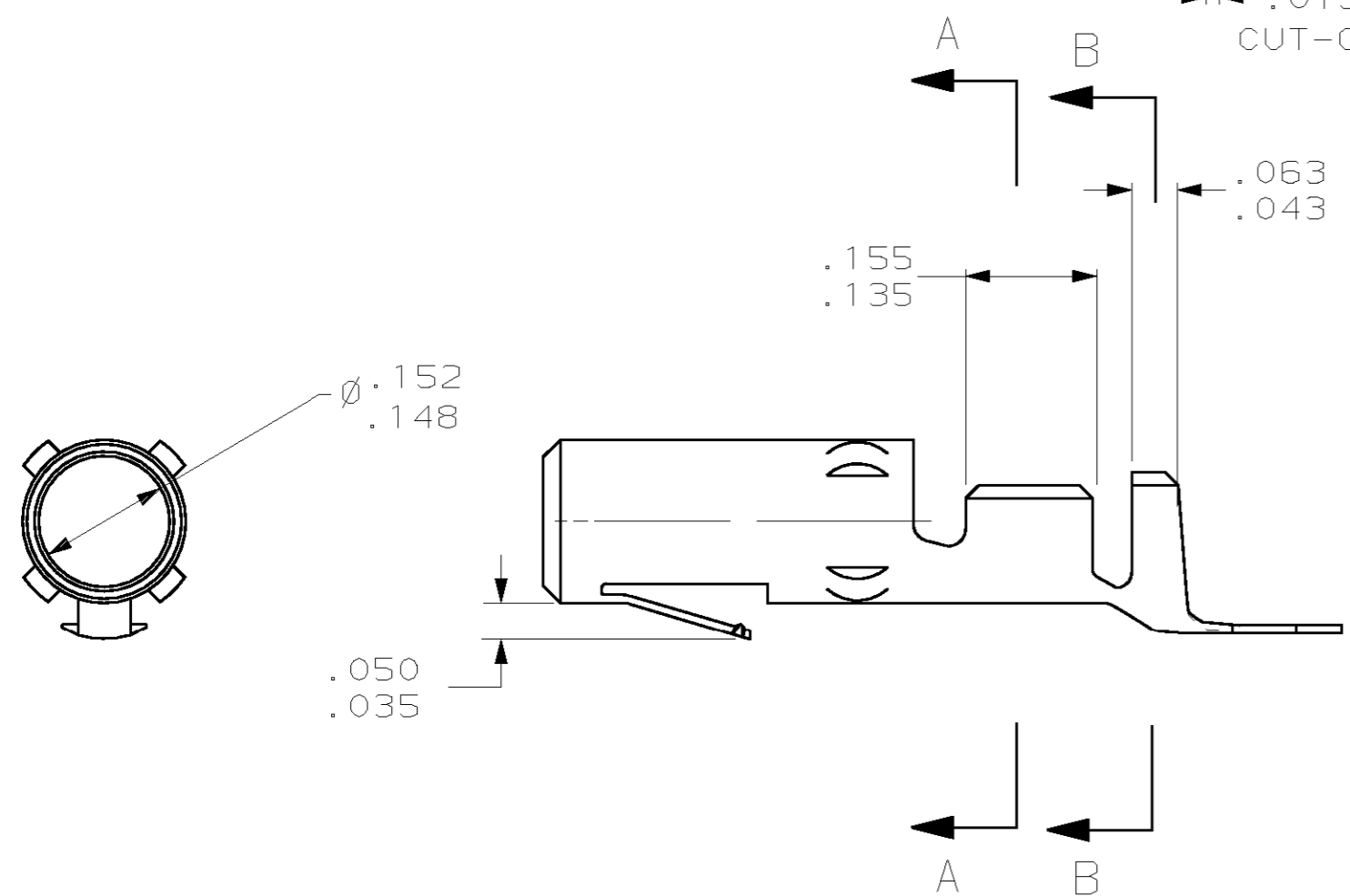
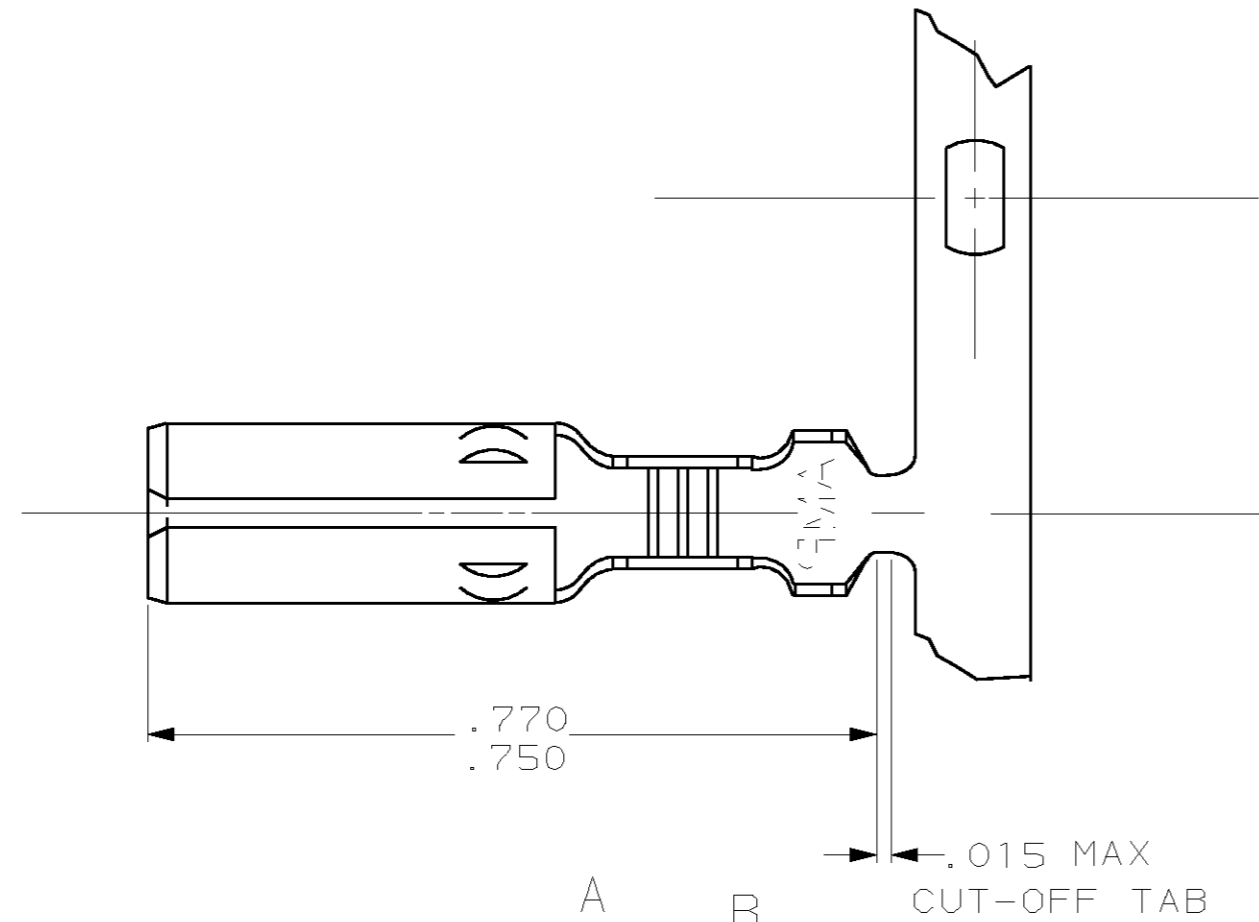


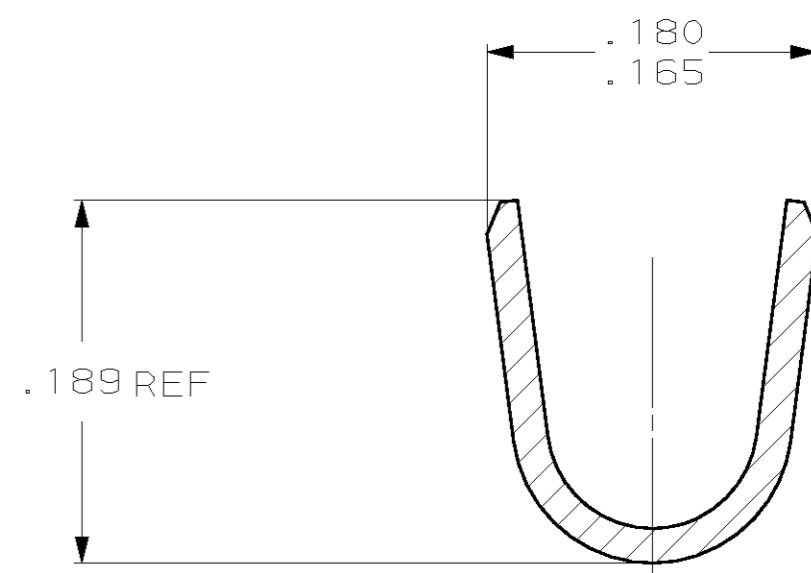
THIS DRAWING IS UNPUBLISHED. RELEASED FOR PUBLICATION .19  
 © COPYRIGHT 19 BY AMP INCORPORATED. ALL RIGHTS RESERVED.

LOC		DIST		REVISIONS			
P	LTR	DESCRIPTION	DATE	DWN	APVD		
CM	53	S	REVISED PER EC 063B-0079-00	21-FEB-00	KW	SR	

1. WIRE RANGE: 20-14 AWG (0.5-2MM<sup>2</sup>).  
 INSULATION RANGE: .125 MAX.



SECTION A-A  
 SCALE 10:1



SECTION B-B  
 SCALE 10:1

PRELIMINARY	TIN	.018 PH BRZ	61085-3
	TIN	.018 BRASS	61085-1
	FINISH	MATERIAL	PART NO

IN	MM	IN	MM	IN	MM	IN	MM
.050	1.27	.139	3.53	.180	4.57	-	-
.043	1.09	.135	3.43	.165	4.19	-	-
.035	0.89	.130	3.30	.156	3.96	-	-
.018	0.46	.125	3.18	.155	3.94	.770	19.56
.015	0.38	.115	2.92	.152	3.86	.750	19.05
.005	0.13	.063	1.60	.148	3.76	.189	4.80
IN	MM	IN	MM	IN	MM	IN	MM

CONVERSION TABLE

**METRIC**

<small>THIS DRAWING IS A CONTROLLED DOCUMENT FOR AMP INCORPORATED. IT IS SUBJECT TO CHANGE AND THE CONTROLLING ENGINEERING ORGANIZATION SHOULD BE CONTACTED FOR THE LATEST REVISION.</small>		DWN	J. HUFFMAN	12-07-95	AMP Incorporated Harrisburg, PA 17105-3608		
DIMENSIONS: mm (INCHES)		CHK	R. SWING	12-07-95			
		APVD	C. MARTIN	12-07-95			
TOLERANCES UNLESS OTHERWISE SPECIFIED: 0 PLC ±- 1 PLC ±- 2 PLC ±- 3 PLC ± .005 4 PLC ±- ANGLES ±- FINISH ±-		NAME	SOCKET, .156 MATE-N-LOK™				
MATERIAL	-	FINISH	-	WEIGHT	-		
CUSTOMER DRAWING		SIZE	A2	CAGE CODE	00779		
		DRAWING NO	C-61085		SCALE	5:1	
		SHEET	1	OF	1	REV	5