

## SAFETY ORGANIZATIONS

THIS FILTER HAS BEEN FORMALLY RECOGNIZED, CERTIFIED OR APPROVED BY THE LISTED AGENCY. THEREFORE, ALL TEST/REQUIREMENTS SPECIFIED IN THE LATEST REVISION OF THE FOLLOWING AGENCY STANDARDS HAVE BEEN MET:

UL RECOGNIZED: UL 1283  
 CSA CERTIFIED: CSA 22.2, #8  
 TUV APPROVED: EN60950

## OPERATING SPECIFICATIONS

LINE CURRENT/VOLTAGE: 60 AMP/55°C, 80 VDC

LINE FREQUENCY: DC

MAXIMUM LEAKAGE CURRENT,  
 EACH LINE TO GROUND:

N/A mA @ 120V 60Hz  
 N/A mA @ 250V 50Hz

OPERATING AMBIENT TEMP. RANGE: -10°C TO +55°C @ RATED CURRENT,  $I_r$ .

IN AN AMBIENT,  $T_0$ , HIGHER THAN 55°C, THE MAXIMUM OPERATING CURRENT,  $I_0$ , IS AS FOLLOWS:

$$I_0 = I_r \sqrt{\frac{85 - T_0}{30}}$$

## RELIABILITY SPECIFICATIONS:

STORAGE TEMPERATURE: -40°C TO +85°C  
 HUMIDITY: 21 DAYS @ 40°C 95% RH.  
 CURRENT OVERLOAD TEST: 6 TIMES  $I_r$  FOR 8 SECONDS

## TEST SPECIFICATIONS:

INDUCTANCE: 0.351 mH NOMINAL  
 CAPACITANCE: (MEASURED @ 1KHz, 0.250VAC MAX., 25°C±1°C)  
 LINE TO GROUND: 0.094  $\mu$ F ±20%  
 LINE TO LINE: 4.424  $\mu$ F ±20%  
 DISCHARGE RESISTOR: 0.165M $\Omega$   
 L/G AND L/L I.R.,  
 NO DISCHARGE RESISTOR: 6000M $\Omega$  (MIN.) @ 100VDC, 20°C AND 50% RH

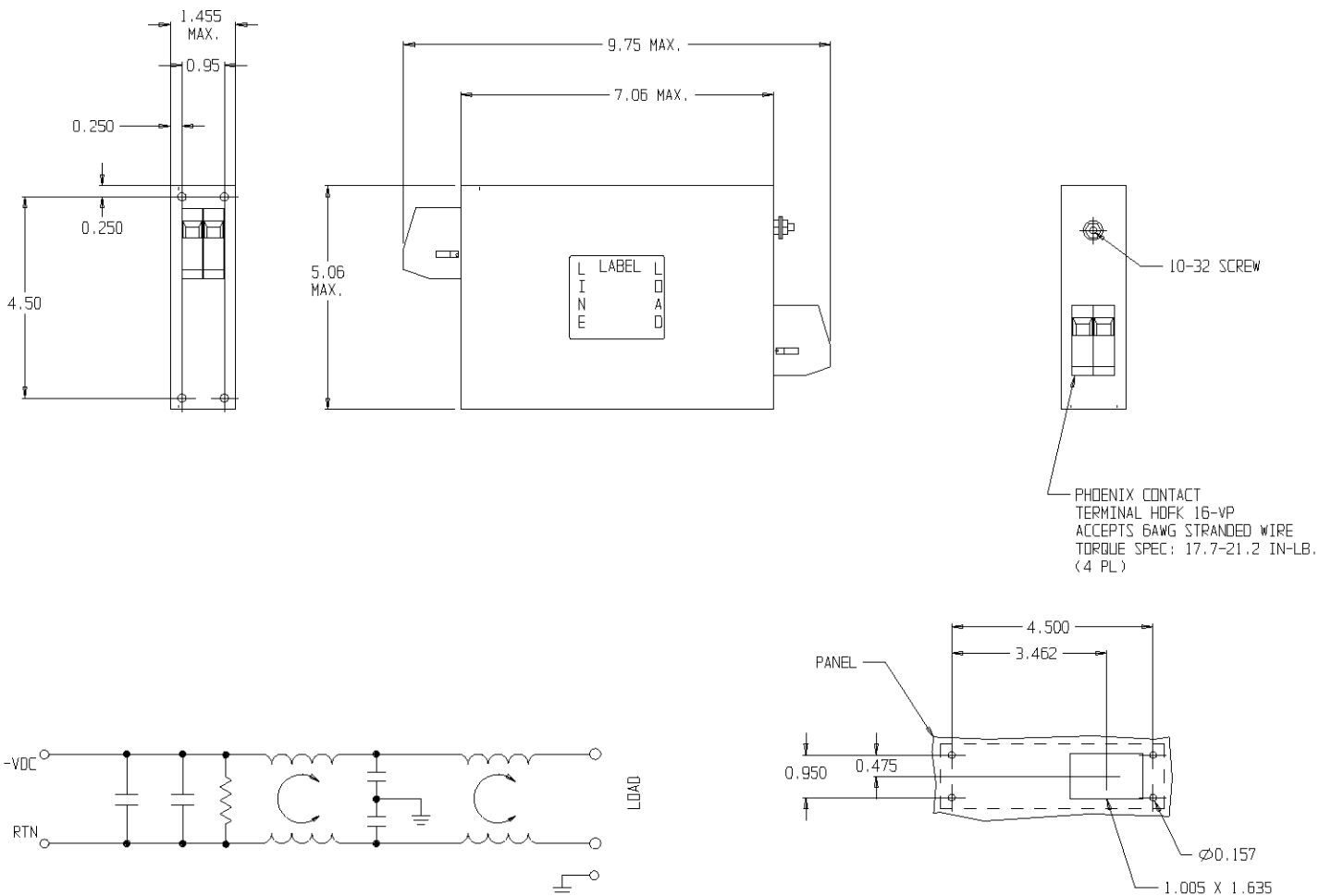
## RECOMMENDED RECEIVING INSPECTION HIPOT:

LINE TO GROUND: 2250 VDC FOR 1 MINUTE  
 LINE TO LINE: 1450 VDC FOR 1 MINUTE

## FILTER APPROVAL:

THE BEST WAY TO SELECT AND QUALIFY A FILTER IS FOR YOUR ENGINEERING TO TEST THE UNIT IN YOUR EQUIPMENT.

CATALOG# 60DCB10		
EC#	APPRVD.	DDMMYY
0631-0093-03		11MAR03
<b>ECO-09-026495</b>	<b>AEG</b>	<b>18DEC 09</b>



PHOENIX CONTACT  
 TERMINAL HDK 16-VP  
 ACCEPTS 6AWG STRANDED WIRE  
 TORQUE SPEC: 17.7-21.2 IN-LB.  
 (4 PL)

VIEWED FROM FILTER SIDE

**1** OBSOLETE PARTS: OBSOLETE CIS STREAMLINING PER D.RENAUD/D.SINISI

**1** OBSOLETE **4-6609074-9** **4-4669074-9** TE PN

50 $\Omega$ - 50 $\Omega$ (MINIMUM) INSERTION LOSS										
FREQUENCY MHz	.01	.05	0.1	.15	0.5	1	3	5	10	30
COMMON dB			9	17	38	40	59	50	39	34
DIFF. dB	15	30	36	40	40	35	60	51	39	32

THIRD ANGLE PROJECTION

UNLESS OTHERWISE SPECIFIED, TOLERANCE TO BE ±.025  
 MATERIAL & FINISH: AS SUPPLIED

This document is proprietary to CORCOM INC. and is not to be reproduced nor used for manufacturing purposes except on CORCOM'S prior written consent.

**tyco**/Electronics **corcom**  
 844 E. ROCKLAND RD. LIBERTYVILLE IL 60048

**POWER LINE FILTER**

CAD FILE: G:\CD\60DCB1002 TYCO # 4-1609074-9  
 SCALE: NTS DATE: 01-02-01 CATALOG NO.  
 DRW. BY: PJD DRG: PJD **60DCB10** REV. **C1**