

THIS DRAWING IS UNPUBLISHED.

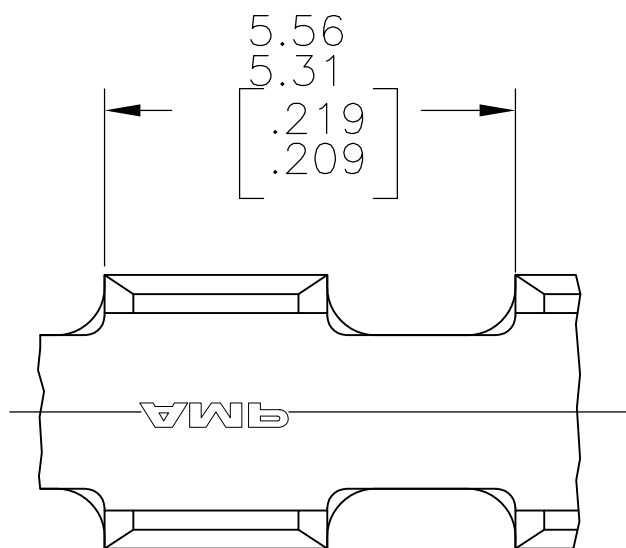
RELEASED FOR PUBLICATION

REVISIONS

© COPYRIGHT - By -

ALL RIGHTS RESERVED.

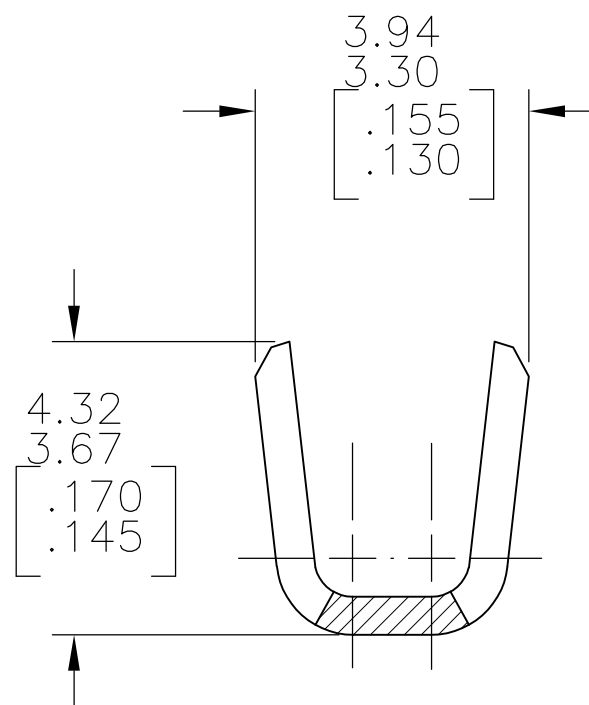
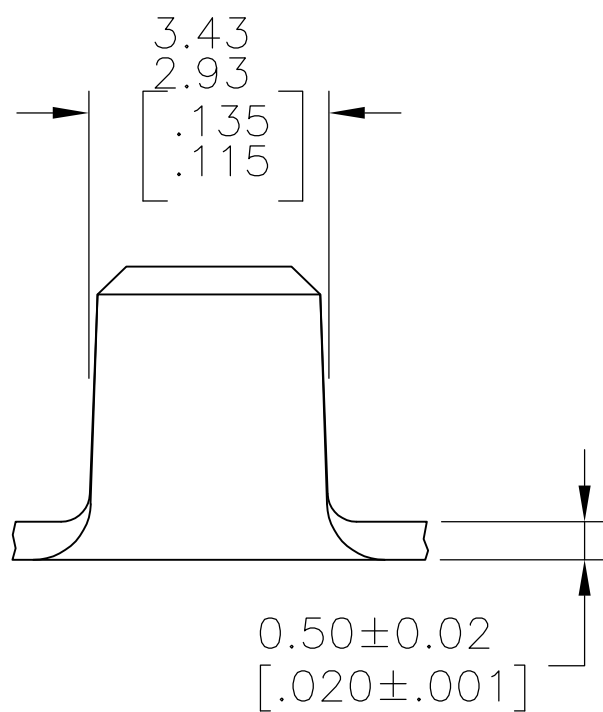
P	LTR	DESCRIPTION	DATE	DWN	APVD
	L2	REVISED PER ECR-15-016346	07MAY2016	NK	LP



1 PRODUCT PROVIDED IN STRIP FORM ON REELS;
BREAKS MAY BE PRESENT.

2 WIRE RANGE FOR NEW APPLICATIONS : 1.27-2.38mm²
[2500-4700 CMA] (WIRE RANGE APPROVED FOR
APPLICATIONS IMPLEMENTED PRIOR TO 2005: 2048-4217 CMA).

3 CRIMP WIDTH: 3.05[.120] F TYPE. CRIMP HEIGHT IN INCHES
(±.002)=(TOTAL CMA OF WIRES+12240/220000).



OBSOLETE	2	NONE	BRASS	60932-4
		TIN	STEEL	60932-2
	WIRE SIZE CMA	FINISH	MATERIAL	PART NO.

THIS DRAWING IS A CONTROLLED DOCUMENT.		DWN DK SCHRUM 5/18/89	STE TE Connectivity		
DIMENSIONS: mm [INCHES]		CHK JR RUTH 7/13/89			
TOLERANCES UNLESS OTHERWISE SPECIFIED:		APVD D SCHWENK 7/13/89	NAME		
0 PLC ± -		PRODUCT SPEC	SPLICE		
1 PLC ± -		APPLICATION SPEC	RESTRICTED TO		
2 PLC ± 0.25[.010]		114-2088	SIZE	CAGE CODE	DRAWING NO
3 PLC ± -		WEIGHT	A3	00779	C-60932
4 PLC ± -		CUSTOMER DRAWING	SCALE 10:1		SHEET 1 OF 1
ANGLES ± -					REV L2
MATERIAL SEE TABLE		FINISH SEE TABLE			