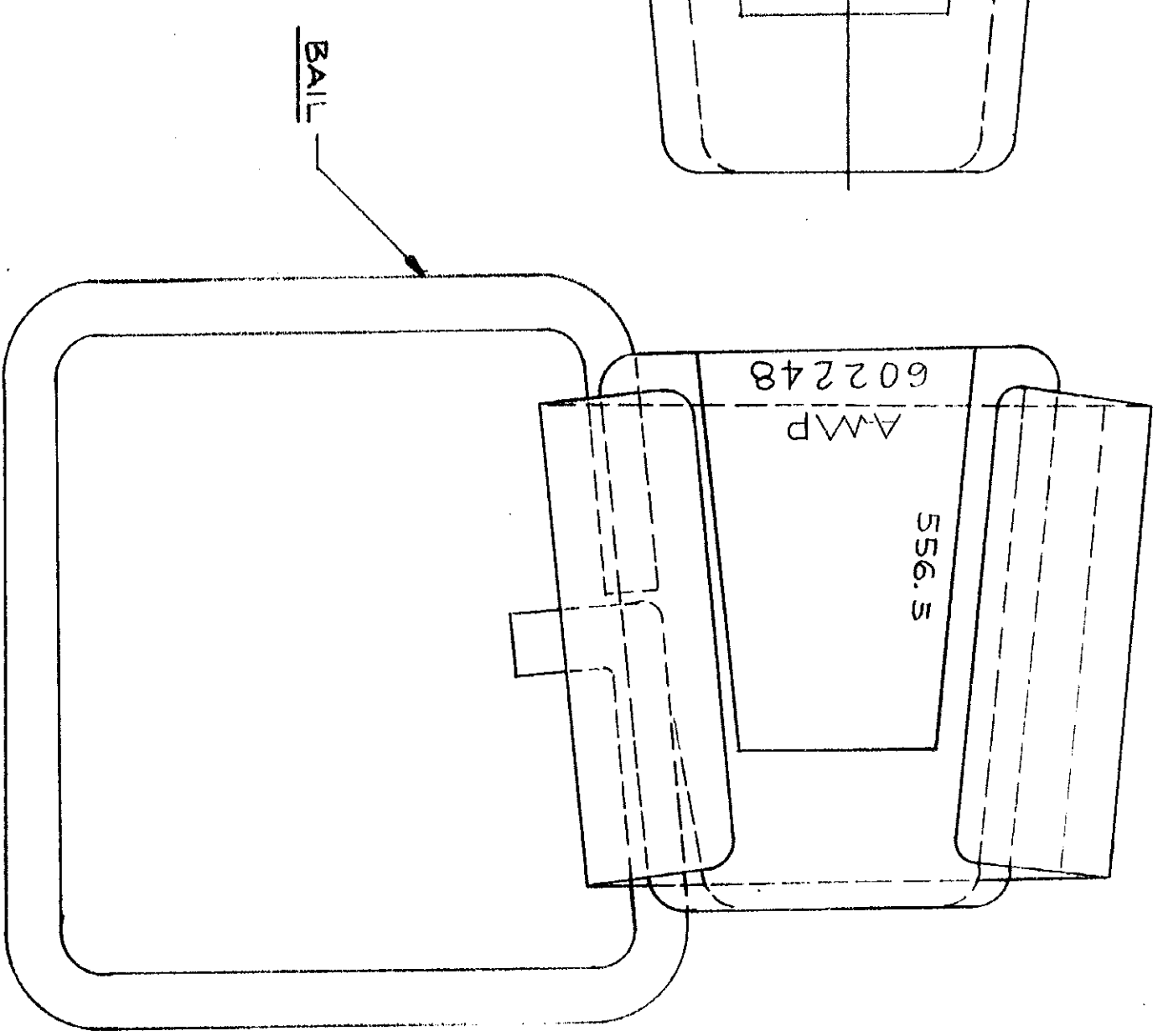
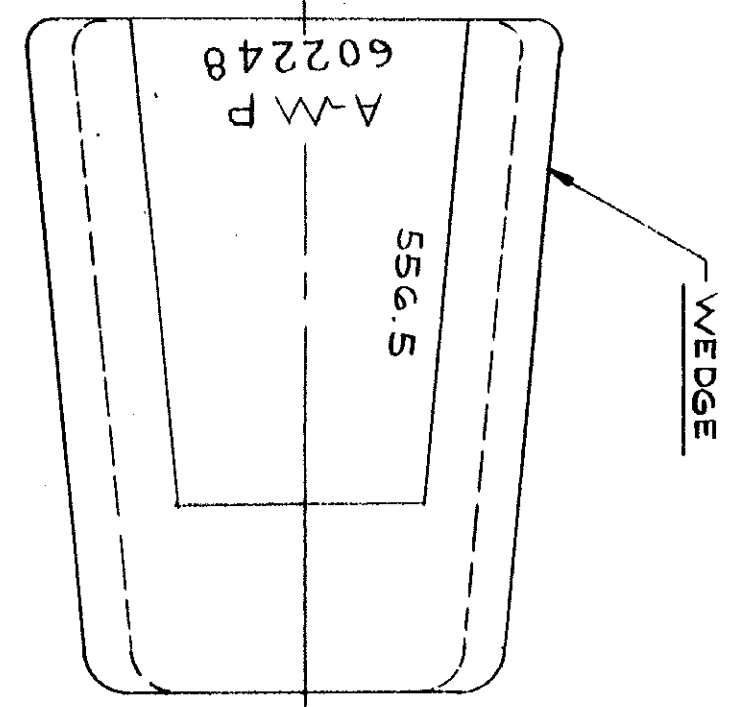
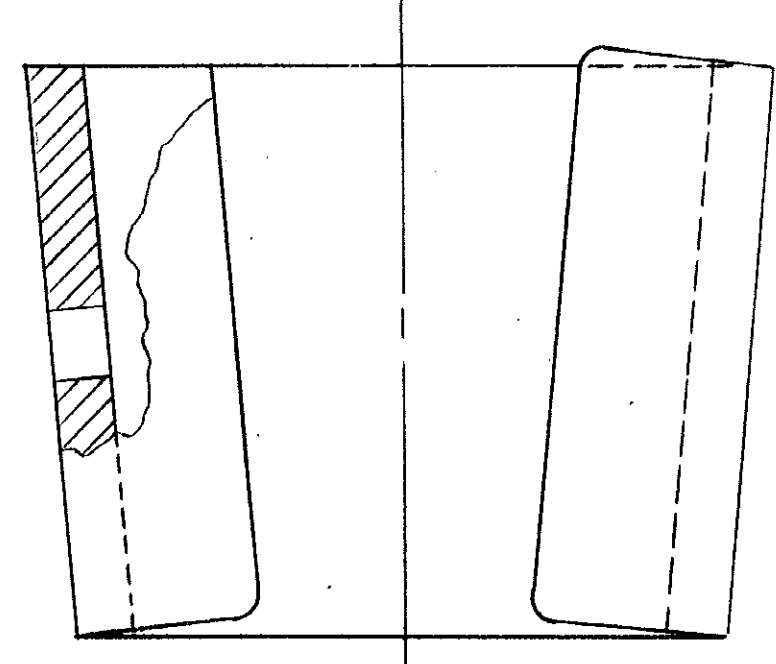
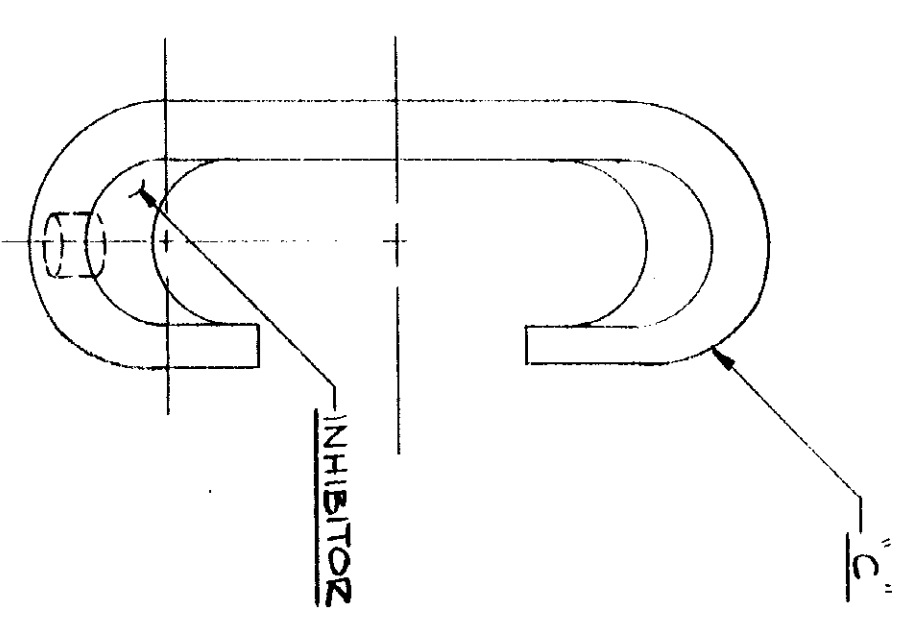


© 1948 BY AMP INCORPORATED. ALL RIGHTS RESERVED. AMP PRODUCTS COVERED BY PATENTS AND/OR PATENTS PENDING. APPROVED PER GOVT CONTRACT NO.

REVISIONS				
ZONE	LTN	DESCRIPTION	DATE	APPROVED
0	NPS	68-1534 (REV 1)	6-11-49	RCY



QTY	DESCRIPTION	PART NO.	MATERIAL & FINISH
1	STIRRUP ASSY	602248	<p>556.5 ALUMINUM (99-A-250)</p> <p>BALL: COPPER - (ASTM B3) TIN PL (MIL-T-10727)</p> <p>WEDGE: ALUMINUM</p>

ENGINEERING CONTROLLED

UNLESS OTHERWISE SPECIFIED DIMENSIONS ARE IN INCHES FRACTIONS DECIMALS ANGLES	± .008	± 5
MATERIAL	SEE TABLE	
HEAT TREAT	SEE TABLE	
FINISH	SEE TABLE	

CONTRACT NO.	4
DR	DATE
CHK	DATE
DSGN ENGR	DATE
APPRD	DATE
DSGN APPR	
OTHER APPR	

AMP INCORPORATED HARRISBURG, PENNSYLVANIA						
AMPACT STIRRUP						
556.5 MCM WITH 3/16 BALL						
SIZE	CODE IDENT NO.	NUMBER				
C	00779	602248				
SCALE	UNITS	LT	CALC	ACTUAL	SHEET	OF
					10	1

NUMBER 602248

AMP INFO
LOC PRINTED
AM 260

AMP 1471-1 (8/64)