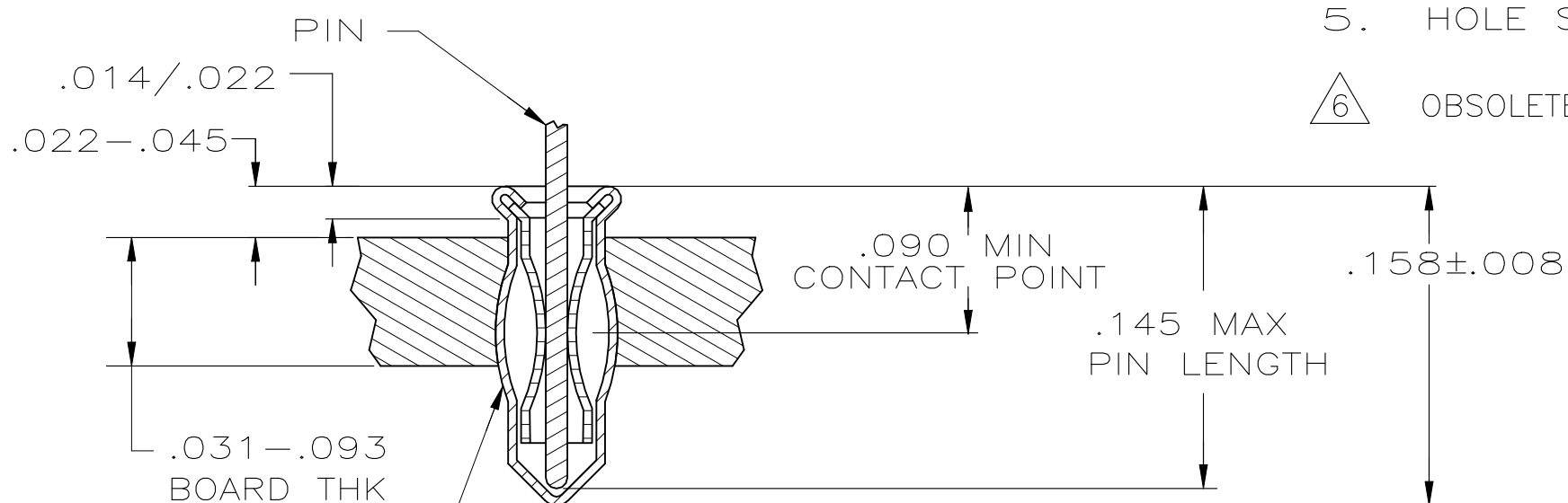
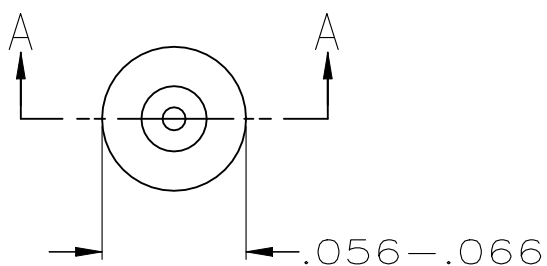


REVISIONS

P	LTR	DESCRIPTION	DATE	DWN	APVD
	A2	REVISED PER ECN-22-182178	02NOV2022	PT	SZ



INSERTION MACHINE CAPABLE OF OVALIZING SOCKET FOR RETENTION IN PC BOARD WITH .042±.003 DIA HOLE PRIOR TO SOLDERING OPERATION

SECTION A-A

- MATERIAL:  
EYELET - COPPER PER ASTM B 152  
SPRING - BERYLLIUM COPPER PER ASTM B 194
- TIN PLATE PER ASTM-B-545 .000100 MIN THICK
- GOLD PLATE PER ASTM B 488 .000030 MIN THICK ON CONTACT AREA.
- TO INSURE 1/2 OZ MIN RETENTION DO NOT EXCEED .004 DIFFERENCE IN PIN DIA WHEN CHANGING TO A SMALLER DIA PIN
- HOLE SIZE FOR HAND INSERTION 0.043-0.046
- OBSOLETE PARTS: OBSOLETE CIS STREAMLINING PER D.RENAUD/D.SINISI

.090-.145	.012-.018	GOLD $\Delta 3$	TIN $\Delta 2$	1-5645945-5
	.015-.021			$\Delta 6$ 5645945-5- 5645945-2 5645945-1
LENGTH	DIA $\Delta 3$	SPRING	EYELET	PART NO
PIN		FINISH		

THIS DRAWING IS A CONTROLLED DOCUMENT.		DWN G. ATTADIA - 20APR2005	<b>STE</b> TE Connectivity			
		CHK J. HAVENER 20APR2005				
DIMENSIONS: INCHES		TOLERANCES UNLESS OTHERWISE SPECIFIED:		NAME		
		0 PLC ± -	MINIATURE SPRING SOCKET ASSEMBLY SERIES 1 SHORT			
		1 PLC ± -				
		2 PLC ± -				
		3 PLC ± -				
MATERIAL		4 PLC ± -	PRODUCT SPEC			
NOTE 1		ANGLES ± -	108-14008			
SEE TABLE		FINISH	APPLICATION SPEC			
			114-13152			
			WEIGHT 0.000000			
			SIZE	CAGE CODE	DRAWING NO	RESTRICTED TO
			A3	00779	C-5645945	-
			CUSTOMER DRAWING		SCALE	SHEET
					NTS	1 OF 1
					REV	A2