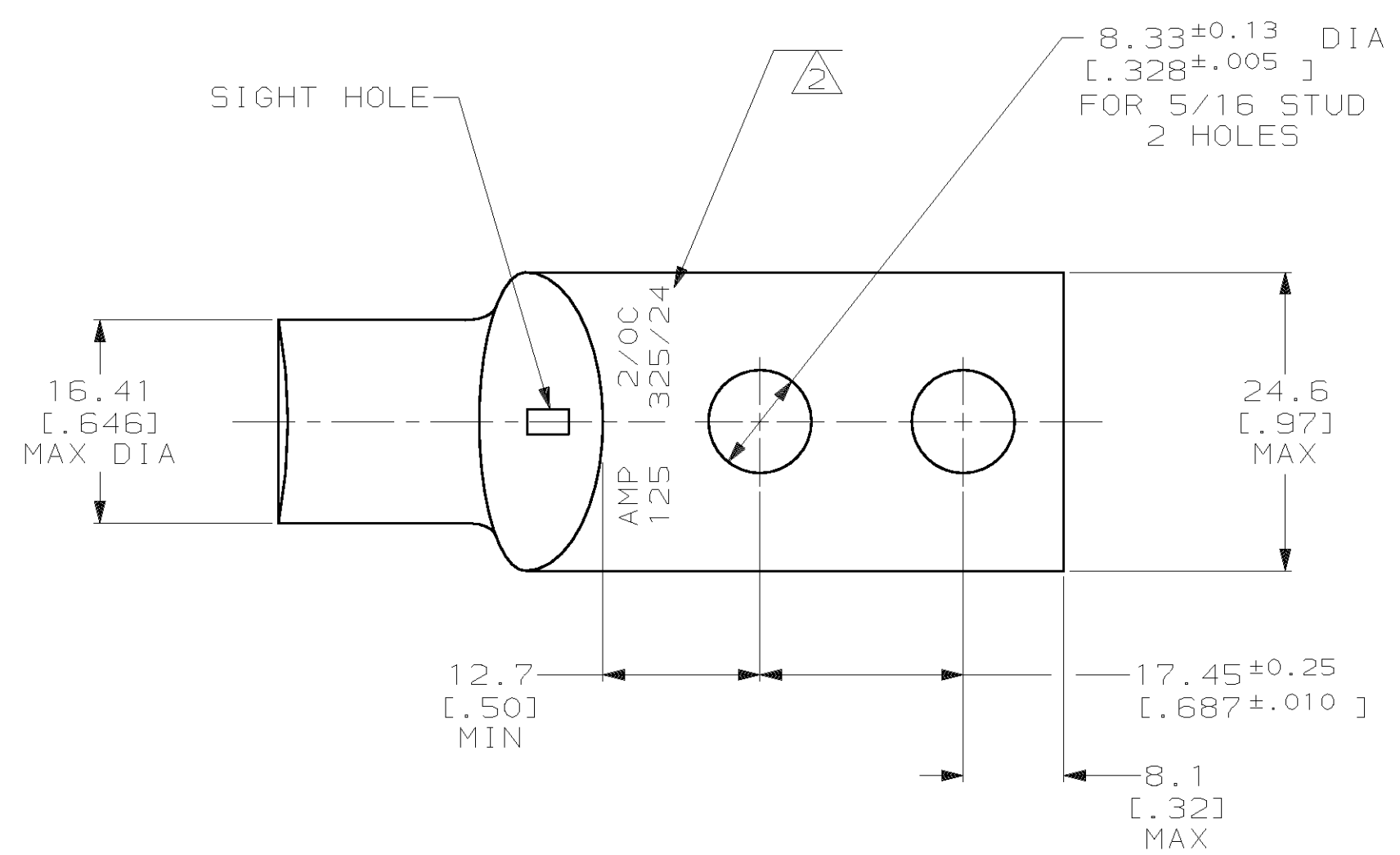
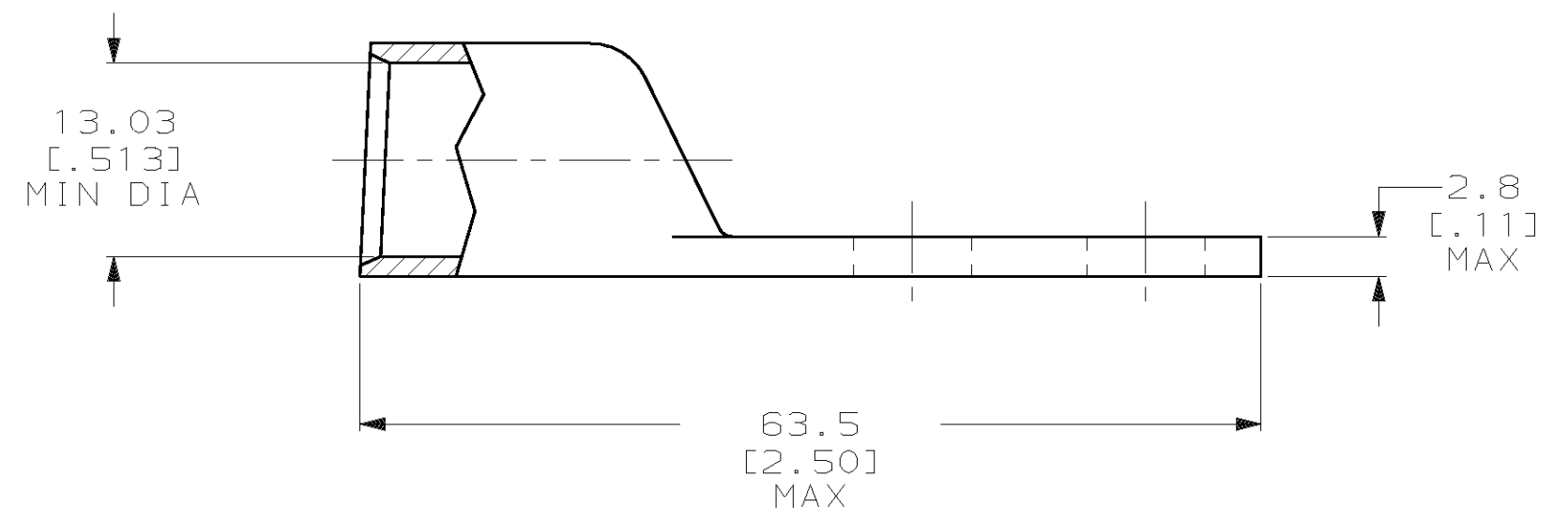


THIS DRAWING IS UNPUBLISHED. RELEASED FOR PUBLICATION, 19 .
 © COPYRIGHT 19 BY AMP INCORPORATED. ALL INTERNATIONAL RIGHTS RESERVED.

| LOC | | DIST | | P | | F | | ZONE | | LTR | | REVISIONS | | DATE | APPD |
|-----|--|------|--|---|--|---|--|------|--|-----|--|----------------------|--|---------|-------|
| G | | 86 | | | | | | | | A | | REV PER 0G3A-0561-01 | | 07OCT02 | JR MS |



1 CIRCULAR MIL RANGE: 119,500-150,500 CM
 2 STAMP CHARACTERS APPROX AS SHOWN



THIS DRAWING IS A CONTROLLED DOCUMENT FOR AMP INCORPORATED. IT IS SUBJECT TO CHANGE AND THE CONTROLLING ENGINEERING ORGANIZATION SHOULD BE CONTACTED FOR THE LATEST REVISION.

| | | | | |
|---|--|----------------------------|--|-----------------------|
| DO NOT SCALE PRINT. UNLESS SPECIFIED DIMENSIONS IN mm [INCHES] TOLERANCES ON : 2 PLC DEC ± - 3 PLC DEC ± - ANGLES ± - | | DR 23AUG94 DK SCHRUM | AMP Incorporated Harrisburg, PA 17105-3608 | |
| MATERIAL COPPER PER ASTM B-75 ANNEALED | | CHK 25AUG94 AJ KAUFMAN | | |
| FINISH TIN PLATE 0.00381 [.000150] MIN THK PER MIL-T-10727 | | APPD 25AUG94 RE ROSER | NAME TERMINAL, AMPOWER, WIRE SIZE: 2/0 AWG | |
| THIS DRAWING IS A CONTROLLED DOCUMENT FOR AMP INCORPORATED. IT IS SUBJECT TO CHANGE AND THE CONTROLLING ENGINEERING ORGANIZATION SHOULD BE CONTACTED FOR THE LATEST REVISION. | | APPD 25AUG94 JL MECKLEY | SIZE C 00779 | DRAWING NO C-55992 |
| | | PRODUCT SPEC - | SCALE 2:1 | SHEET 1 OF 1 |
| | | APPLICATION SPEC - | PART NO 55992-1 | |
| | | WEIGHT .079 LBS | CUSTOMER DRAWING | |