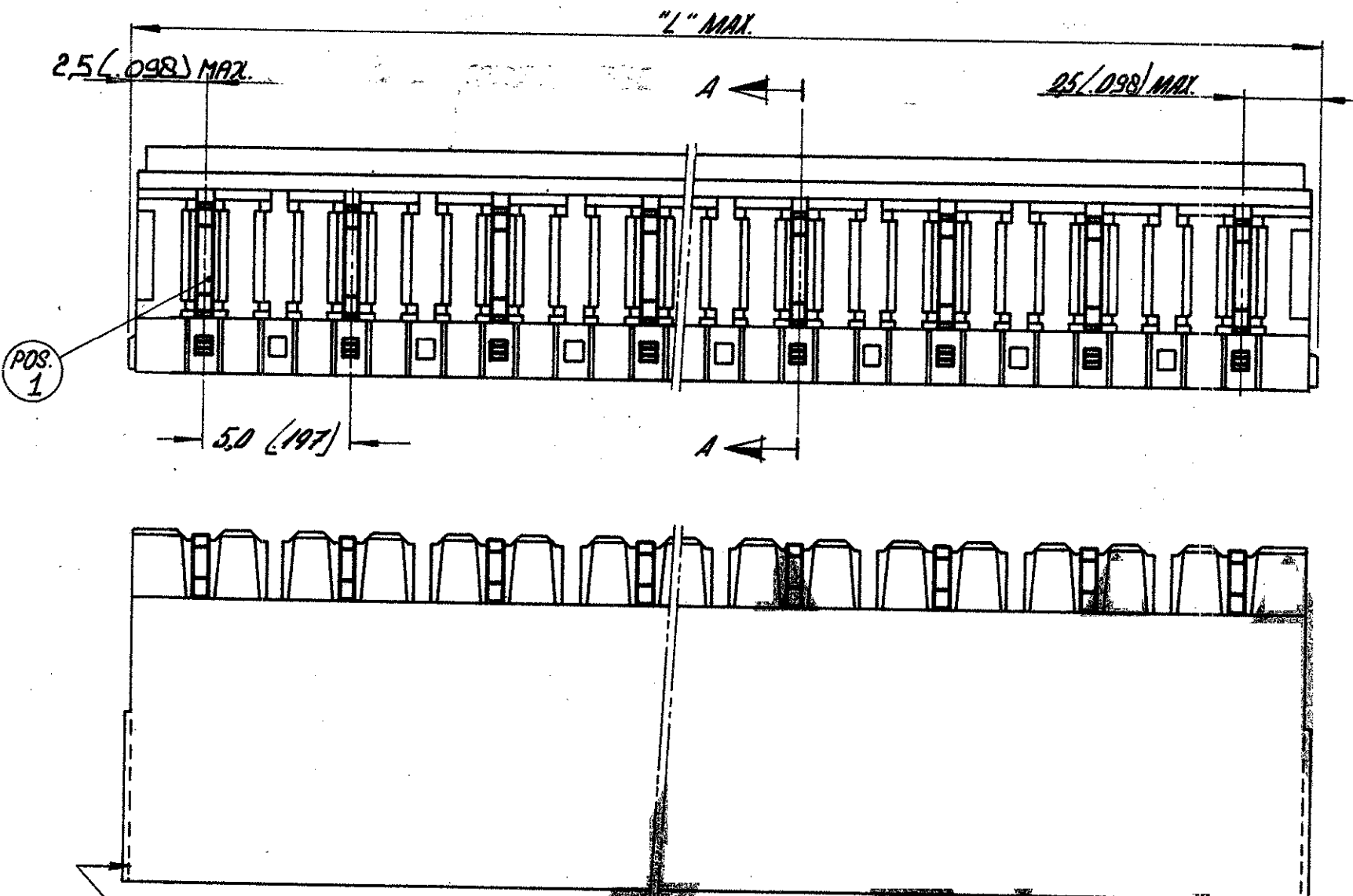
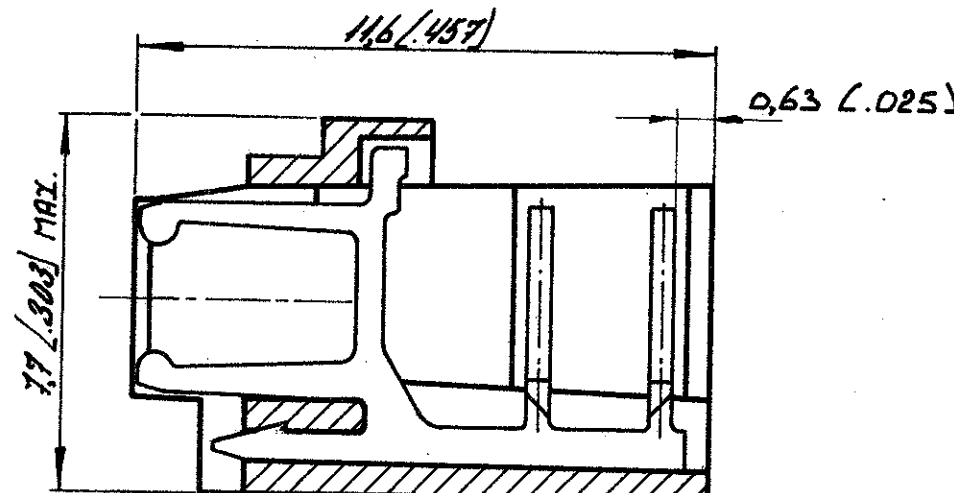


DRAWING MADE IN AMERICAN PROJECTION



OPTIONAL (2x)



SECTION A-A

| | | | | |
|-----|------------------------------|---------|-----|------|
| A1 | REVISED PER ECO-09-026945 | 28NOV09 | KK | AEG |
| ltr | rec. rev. | date | dwn | apvd |

| ORDER NUMBER | NUMBER OF POSITIONS: | 2" MAX. | |
|--------------|----------------------|---------|-------|
| | | M.M. | INCH. |
| 5164852-2 | 2 | 10.1 | .398 |
| -3 | 3 | 15.1 | .594 |
| -4 | 4 | 20.1 | .791 |
| -5 | 5 | 25.1 | .988 |
| -6 | 6 | 30.1 | 1.185 |
| -7 | 7 | 35.1 | 1.382 |
| -8 | 8 | 40.1 | 1.579 |
| -9 | 9 | 45.1 | 1.776 |
| -10 | 10 | 50.1 | 1.973 |
| -11 | 11 | 55.1 | 2.169 |
| -12 | 12 | 60.1 | 2.366 |
| -13 | 13 | 65.1 | 2.563 |
| -14 | 14 | 70.1 | 2.760 |
| 1-5164852-5 | 15 | 75.1 | 2.957 |

△ 1
OBSOLETE

△ 1
OBSOLETE

MATERIAL: HOUSING: P.B.T. 20% GLASS FILLED
CONTACT: BRASS, TYP. PLATING OVER
NICKEL BARRIER

△ 1 OBSOLETE PARTS: OBSOLETE CIS STREAMLINING PER D.RENAUD/D.SINISI

| | | |
|--|---|---|
| SEE TABLE. | SEE ABOVE. | SEE ABOVE. |
| ORDER NO. | MATERIAL | PLATING |
| CUSTOMER COPY FOR REFERENCE ONLY | | |
| DR R. Coolen DATE 25 MAR 05 | © 1978 BY AMP-HOLLAND N.V. ALL RIGHTS RESERVED A-MP PRODUCTS COVERED BY PATENTS AND/OR PATENTS PENDING. | |
| CHK | DATE | AMP AMP-HOLLAND N.V. 's-Hertogenbosch |
| DE | DATE | |
| APP | DATE | WIRE-RANGE INSUL-RANGE FIRST USED |
| SCALE N.T.S. | | SIZE B |
| NO G-5164852 | | REV A1 |
| NAME 2-15 POS. FEMALE DN WIRE CONNECTOR ASSY (VERTICAL) FOR MINI/MATCH INTERCONNECTION SYSTEM, PITCH: 5.0 mm. | | |