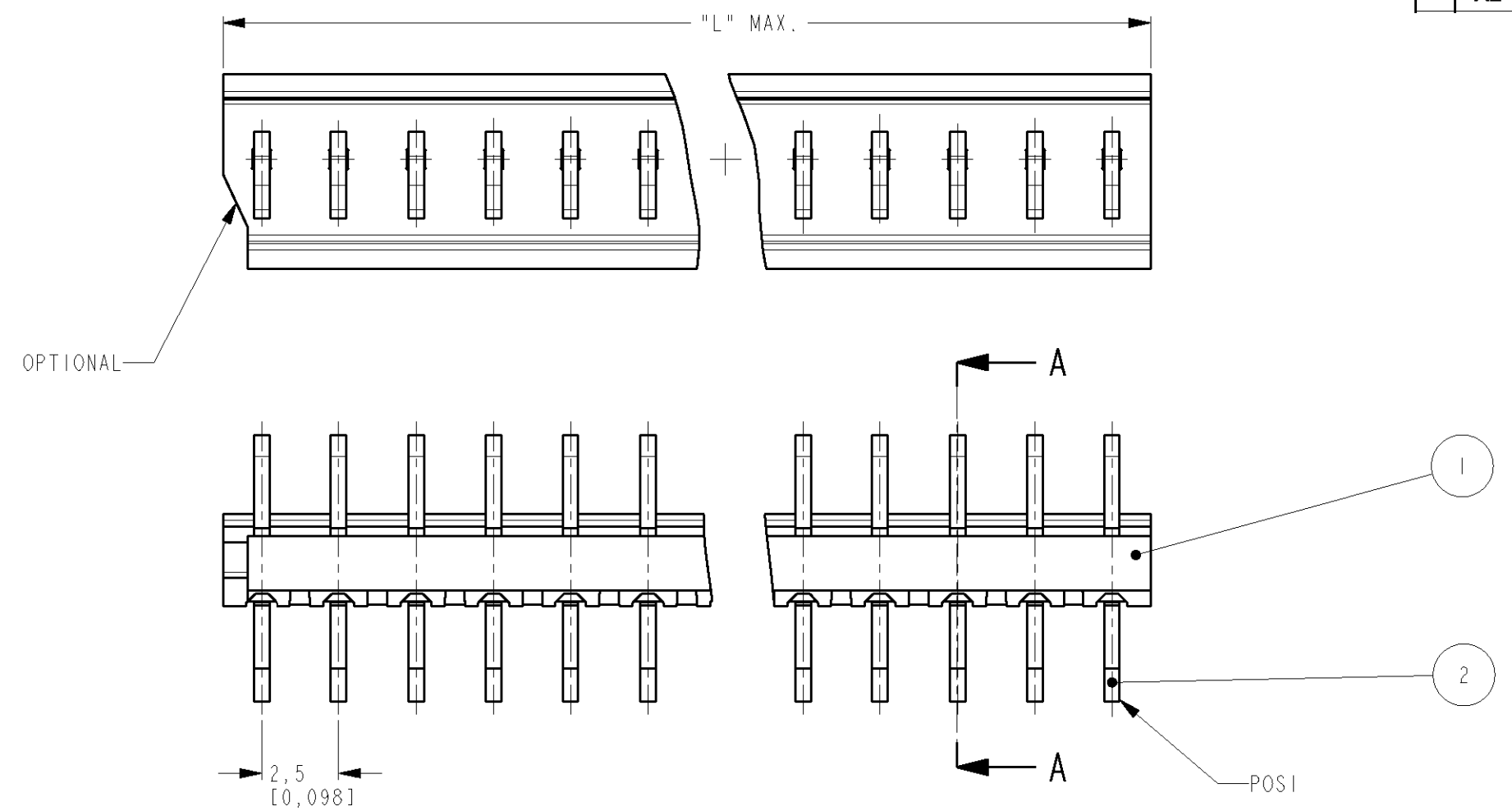


THIS DRAWING IS UNPUBLISHED. RELEASED FOR PUBLICATION  
 © COPYRIGHT ALL RIGHTS RESERVED.

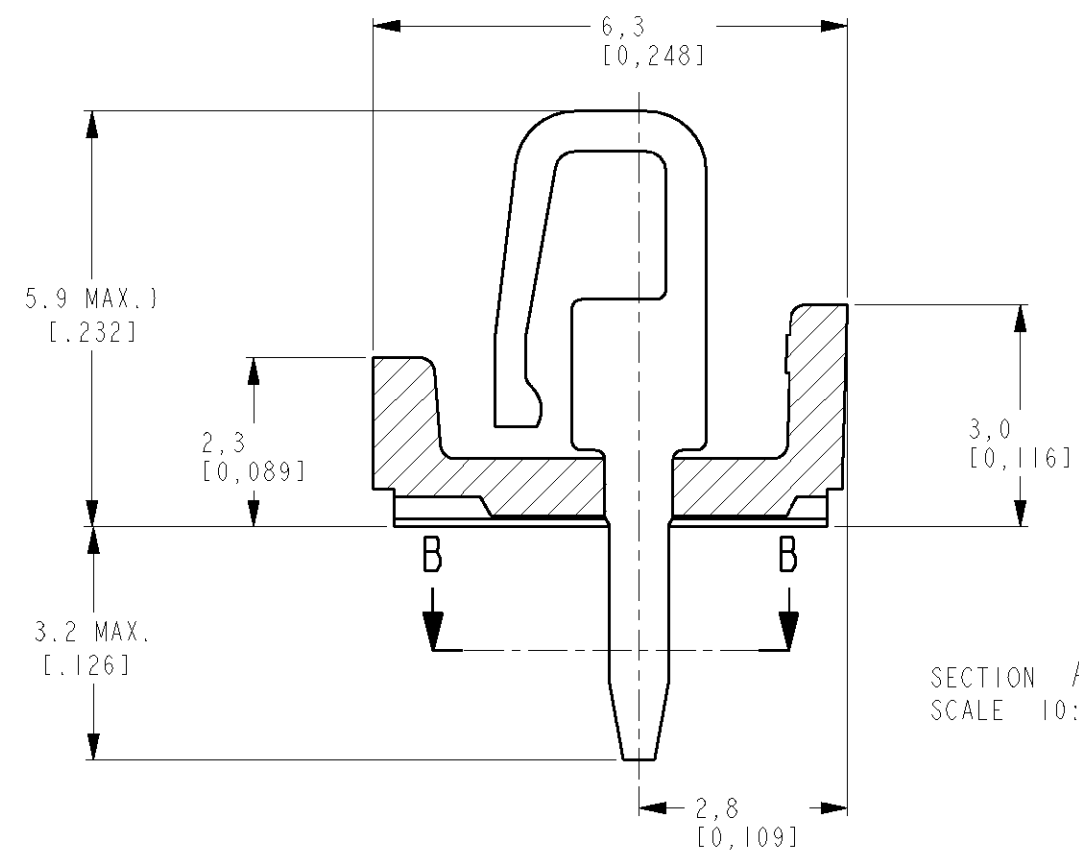
| LOC | DIST | REVISIONS                    |         |     |      |
|-----|------|------------------------------|---------|-----|------|
| P   | LTR  | DESCRIPTION                  | DATE    | DWN | APVD |
| H   | -    | A2 REVISED PER ECO-11-005294 | 19APR11 | RK  | HMR  |



| PARTNUMBER             | POS | "L" MAX |       |
|------------------------|-----|---------|-------|
|                        |     | MM      | INCH  |
| 0-5164713-3            | 3   | 7.5     | .295  |
| 0-5164713-4            | 4   | 10.0    | .394  |
| 0-5164713-5            | 5   | 12.5    | .492  |
| 0-5164713-6            | 6   | 15.0    | .591  |
| 0-5164713-7            | 7   | 17.5    | .689  |
| 0-5164713-8            | 8   | 20.0    | .787  |
| 0-5164713-9            | 9   | 22.5    | .886  |
| 1-5164713-0            | 10  | 25.0    | .984  |
| 1-5164713-1            | 11  | 27.5    | 1.083 |
| 1-5164713-2            | 12  | 30.0    | 1.181 |
| 1-5164713-3            | 13  | 32.5    | 1.280 |
| 1-5164713-4            | 14  | 35.0    | 1.378 |
| 1-5164713-5            | 15  | 37.5    | 1.476 |
| 1-5164713-6            | 16  | 40.0    | 1.575 |
| 1-5164713-7            | 17  | 42.5    | 1.673 |
| <del>1-5164713-8</del> | 18  | 45.0    | 1.772 |
| <del>1-5164713-9</del> | 19  | 47.5    | 1.870 |
| 2-5164713-0            | 20  | 50.0    | 1.969 |

**OBSOLETE**

**1** OBSOLETE PARTS: OBSOLETE CIS STREAMLINING PER D.RENAUD/D.SINISI



| DIMENSIONS: | TOLERANCES UNLESS OTHERWISE SPECIFIED: |
|-------------|--|
| mm (inch)   |  |
| 0 PLC       | ±-                                     |
| 1 PLC       | ±-                                     |
| 2 PLC       | ±-                                     |
| 3 PLC       | ±-                                     |
| 4 PLC       | ±-                                     |
| ANGLES      | ±-                                     |
| MATERIAL    | FINISH                                 |

|                  |             |                         |   |
|------------------|-------------|-------------------------|---|
| 2                | CONTACT     | BRASS                   | TIN OVER NICKEL                                     |
| 1                | HOUSING     | PBT 20% GF, COLOR GREEN |   |
| ITEM NO.         | DESCRIPTION | MATERIAL                | FINISH  |
| DWN              | 09 MAR 05   | TE Connectivity         |   |
| CHR              | M.GOSSELINK |                         |   |
| APVD             | F.FELJTENS  |                         |   |
| PRODUCT SPEC     | 108-19027   |                         |   |
| APPLICATION SPEC |             | NAME                    | MINI-MATCH CONNECTOR ASS'Y<br>3-20 POS 2.5 MM PITCH |
| WEIGHT           | -           | SIZE                    | A3  |
| CUSTOMER DRAWING |             | CAGE CODE               | 00779   |
|                  |             | DRAWING NO              | C=5164713   |
|                  |             | RESTRICTED TO           | -   |
|                  |             | SCALE                   | 5:1   |
|                  |             | SHEET                   | 1 OF 1  |
|                  |             | REV                     | A2  |