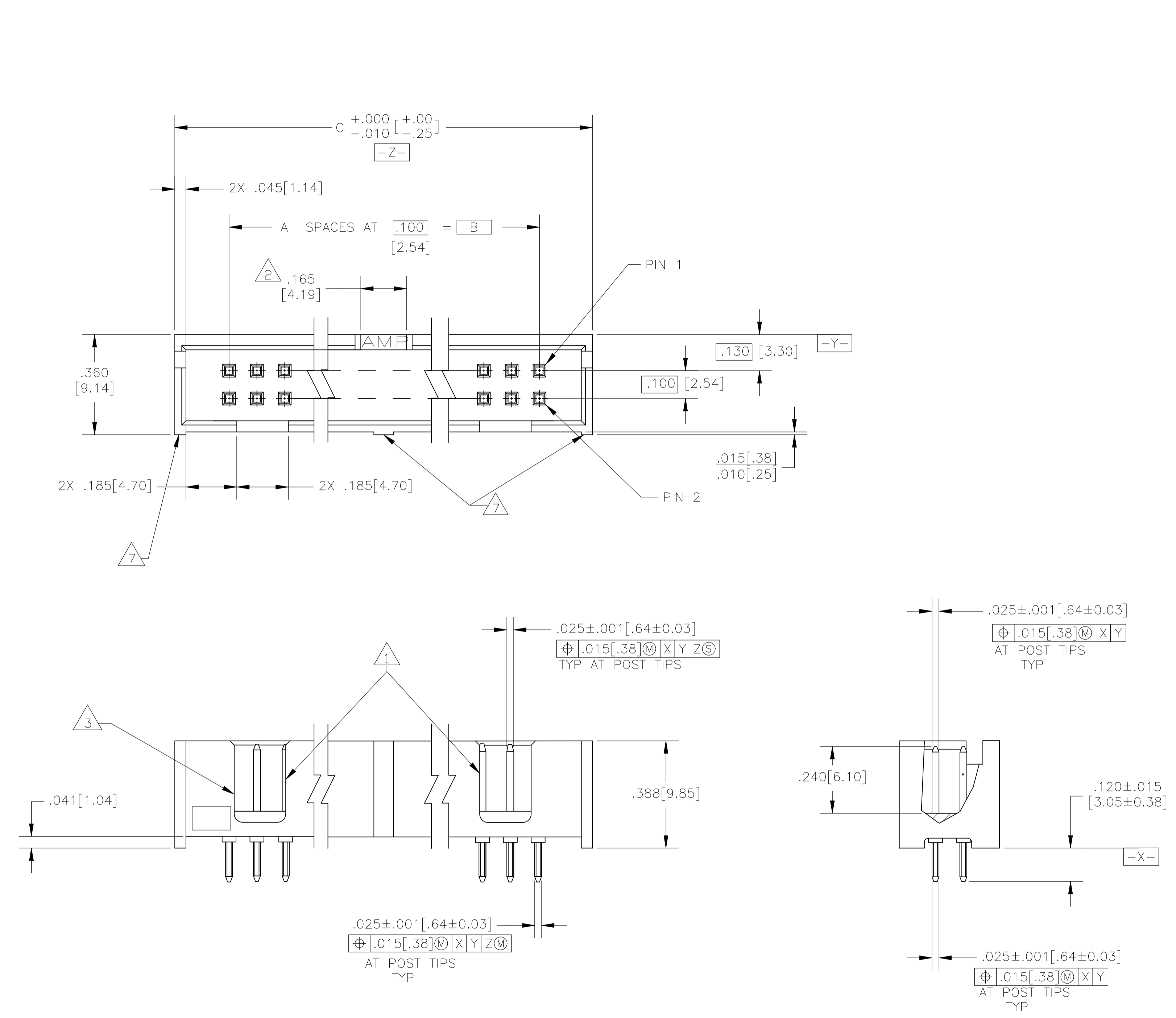
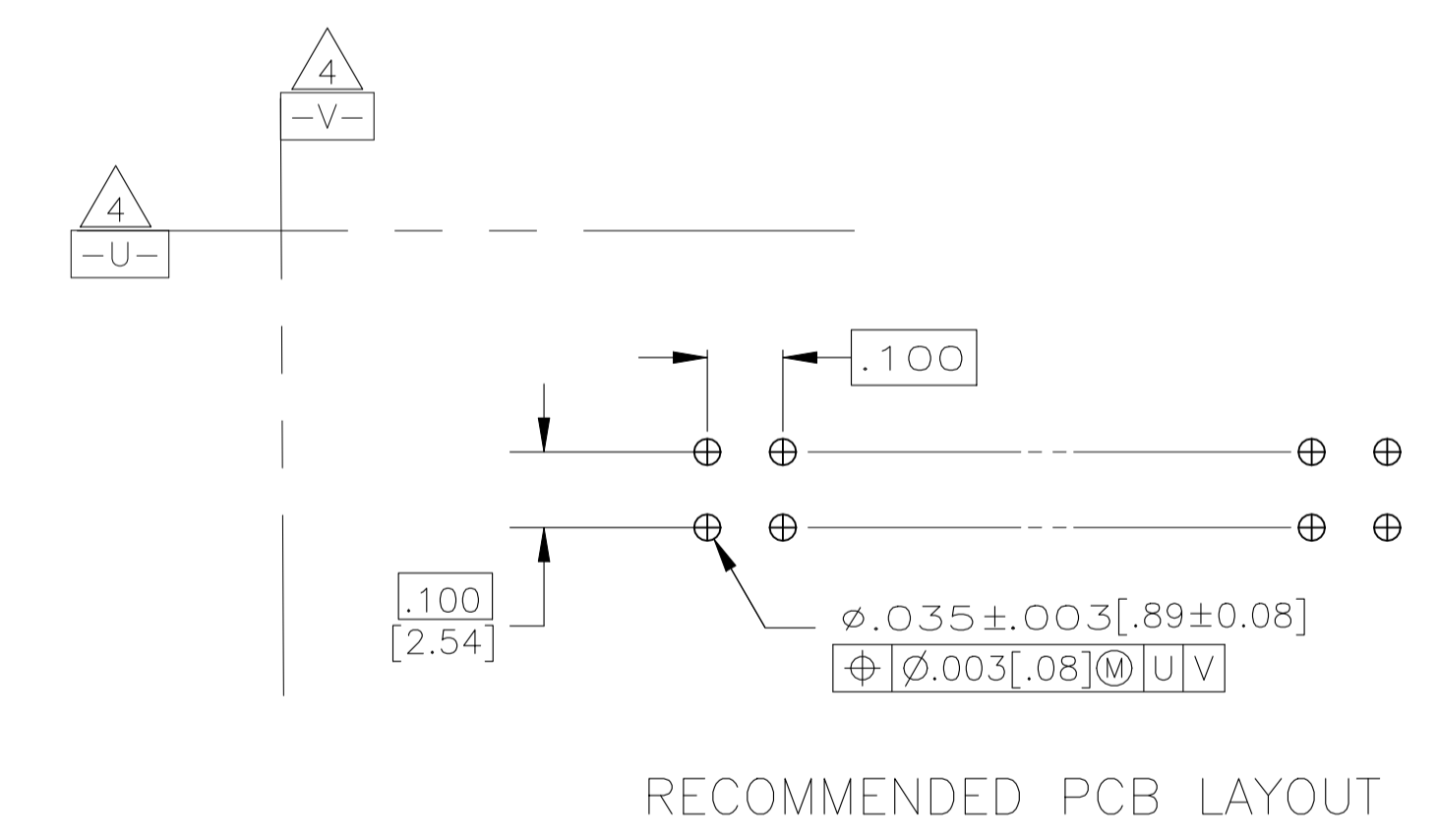


REVISIONS				
P	LTR	DESCRIPTION	DATE	APPROV
E2	REVISED PER	ECR-23-172172	13APR2023	GC WH



- 1 DOUBLE BAR POLARIZATION SLOTS.
- 2 CENTER POLARIZATION SLOT.
- 3 FOR 10 POSN ASSEMBLY, SLOT OMITTED IN THIS LOCATION.
- 4 DATUMS U AND V TO BE ESTABLISHED BY THE CUSTOMER.
- 5 HOUSING: GLASS FILLED NYLON OR PBT, BLACK, UL 94V-0 RATED. POSTS: BRASS.
- 6 POSTS: GOLD FLASH OVER PALLADIUM-NICKEL PLATE, .000015[.00038] MIN TOTAL ON THE MATING SURFACES, .000100[.00254] MIN TIN PLATE ON THE SOLDER-TAILS, .000050[.00127] MIN NICKEL UNDERPLATE ON THE ENTIRE POST. -OR- .000015[.00038] MIN GOLD PLATE ON THE MATING SURFACES, .000100[.00254] MIN TIN PLATE ON THE SOLDER-TAILS, .000050[.00127] MIN NICKEL UNDERPLATE ON THE ENTIRE POST.
- 7 RIBS: ALL POSITION SIZES-2 LOCATED AT ENDS OF HOUSING. 20 THRU 34 POSITION SIZES-1 ADDITIONAL RIB CENTERED ON HOUSING. 40 THRU 60 POSITION SIZES- 2 ADDITIONAL RIBS EVENLY SPACED WITHIN REMAINING LENGTH OF HOUSING.



1.500 [38.10]	1.100 [27.94]	11	24	1-5103308-3
3.300 [83.82]	2.900 [73.66]	29	60	1-5103308-2
2.800 [71.12]	2.400 [60.96]	24	50	1-5103308-0
2.300 [58.42]	1.900 [48.26]	19	40	5103308-8
2.000 [50.80]	1.600 [40.64]	16	34	5103308-7
1.600 [40.64]	1.200 [30.48]	12	26	5103308-6
1.300 [33.02]	.900 [22.86]	9	20	5103308-5
1.100 [27.94]	.700 [17.78]	7	16	5103308-3
1.000 [25.40]	.600 [15.24]	6	14	5103308-2
.800 [20.32]	.400 [10.16]	4	10	5103308-1
C	B	A	NO OF POSN	PART NUMBER

THIS DRAWING IS A CONTROLLED DOCUMENT.

DIMENSIONS: INCHES [mm]

TOLERANCES UNLESS OTHERWISE SPECIFIED:

0. PLC	± -
1. PLC	± -
2. PLC	± -
3. PLC	± .005(1:3)
4. PLC	± -
ANGLES	± -

MATERIAL: 5 FINISH: 6

WEIGHT: 0.000000

CUSTOMER DRAWING

DIN B. LATTUCA 01 NOV 05
CHK S. BOLASH 01 NOV 05
APPROV W. WALMSLEY 01 NOV 05

NAME: HEADER ASSY, VERTICAL, LOW PROFILE, AMP-LATCH

PRODUCT SPEC: 108-40018

APPLICATION SPEC: -

SIZE: A1

SCALE: 4:1

SHEET: 1 of 1

REV: E2