

Table of Contents

Power Distribution Units .....14-2

### Power Distribution Units

Custom-designed and built AC or DC products for aerospace applications

Key platforms for which we have designed and built PDUs:

- For primary and secondary power distribution
- Various plug-in and bus bar line-replaceable modules (LRMs)
- Installed on a panel mounting system or backplane
- LRMs may be contactors, circuit breakers, sensing units, ELCUs
- Backplanes, designed as a fault-free zone with no moving parts, are intended as a permanent installation on the mother vehicle
- Current/voltage sensing, fuses, circuit breakers, power monitors
- Integrated generator and logic control units
- Compact designs



HARTMAN AC and DC power distribution units (PDUs) and KILOVAC DC PDUs from TE Connectivity are designed, built and qualified to meet your specific requirements.

We have a half-century of experience providing PDUs for the aerospace industry, serving both commercial and military customers.

Allow us to apply our significant expertise in integrating bus-bar and plug-in contactors, relays, sensors, monitors, circuit breakers, shunts, generator control units and other components into compact, lightweight PDUs.

Through our value-added service we can save you time and money in your design and manufacturing processes, as well as the end customers' maintenance programs.

Whether you require innovative modular units or backplane-type panels for fixed wing aircraft or rotorcraft, we can help.

#### Custom Primary Power Distribution

**AC PDUs** — from power distribution panels to line replaceable units—using HARTMAN AC contactors with ratings to 500 amps per phase at 115/200 VAC, 400 Hz

**28 VDC PDUs** — Distribution panels HARTMAN DC bus bar contactors rated to 1000 amps or hermetic contactors rated to 600 amps at 28 VDC

**270 VDC PDUs** — using KILOVAC military/aerospace high-voltage DC contactors rated to 1000 amps continuous current and up to 1000 VDC

#### Secondary Power Distribution

HARTMAN and CII relays and contactors combine for a full range of capability in secondary AC or 28VDC power distribution.

KILOVAC ultra-small high-voltage DC contactors, rated to 150 amps continuous current, allow smaller PDU packages with true flight-rated HVDC hardware.

#### Advanced Products for State-of-the-Art Designs

**Monitoring and Autonomous Trip** — HARTMAN AC Remote Power Controllers (RPCs), Remote Control Circuit Breakers (RCCBs) or Electronic Load Control Units (ELCUs) provide power monitoring and autonomous trip capabilities.

**Ground Fault Sense and Trip Relays and Contactors** — can be added for further protection.

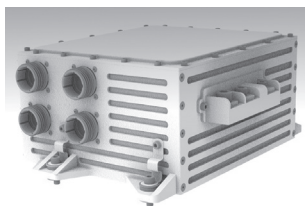
**Hall Effect Current Sensors** — can be integrated into our HARTMAN K series bus bar 28 VDC contactors or used as standalone sensors.

**High-Voltage DC Current Sensing** — KILOVAC KCS series contactors have embedded hall effect sensors for use as overcurrent sense contactors or as remote power controllers with customer-determined time delay on trip.

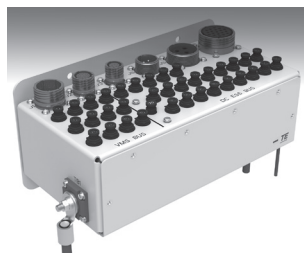
**Fast Switching** — TE's new KDPC series SSPC, rated at 100 A at 270 VDC, delivers fast switching speed, power protection and long life.

**Complete Packaging** — TE's broad product portfolio enhances our PDU design capability with products from our Raychem wire, cable, tubing, and molded shapes, AMP terminals and connectors, and DEUTSCH 38999 connectors.

**Materials Expertise** — Our capabilities for providing sturdy, lightweight enclosures include both aluminum and TE composites.



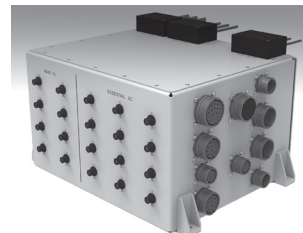
270 VDC EDU incorporating KILOVAC MAP series primary and secondary distribution contactors in a compact LRU enclosure



28 VDC secondary distribution PDU using HARTMAN K series contactors, CII FCA Series relays and DEUTSCH connectors



28 VDC primary distribution PDU incorporating HARTMAN K500 bus bar-mount contactors and HECS Hall effect sensors



Primary and secondary 115 VAC, 400 Hz PDU using HARTMAN compact 200 A, 3-phase contactors and CII midrange relays