



Doc. No: 411-121032
Issue: 1
Date: Jan 2014

Use of a leader to reduce printer calibration waste

Introduction:

Printer calibration

All TE Connectivity (TE) thermal transfer printers calibrate on the markers being printed. This gives print position accuracy, and reduces waste from incorrect/misaligned printing. The act of calibration means there are up to 11 unused scrap markers.

Calibration leader

The printers listed in Table 1 have auto-calibration that cannot be overridden. To reduce calibration scrap this document outlines the TE recommended procedure for a printer calibration leader. This will allow the user to reclaim the calibration markers without losing the printer accuracy.

When to use a calibration leader

A calibration leader can be used when calibration scrap is not wanted following printhead opening.

Markers needed for Calibration:

Marker size			Printers		
mm	inch	RPS	TE3124/3112	T200 IDENT	T6112DS
2.4	3/32	N/A	5 markers	5 markers	11 markers
3.2	1/8	22-18	5 markers	5 markers	11 markers
4.8	3/16	18-12	5 markers	5 markers	11 markers
6.4	1/4	15-10	4 markers	4 markers	9 markers
9.6	3/8	8-4	3 markers	3 markers	6 markers
12.7	1/2	10-12	3 markers	2 markers	5 markers
18.0	3/4	6-250	2 markers	2 markers	4 markers
25.4	1.0	1-400	2 markers	2 markers	3 markers
38.1	1.5	400-1000	1 marker	1 marker	2 markers
50.8	2.0	N/A	1 marker	1 marker	2 markers

Table 1

Tip:

Construct calibration leaders from the type of markers you are printing, retain the leader to be used again, when printing the same size and type of marker.

Author: I Ridgeway
Issue date: Jan 2014
Page: 1 of 6

While TE Connectivity has made every reasonable effort to ensure the accuracy of the information in this document, TE does not guarantee that it is error-free, nor does TE make any other representation, warranty or guarantee that the information is accurate, correct, reliable or current. TE reserves the right to make any adjustments to the information contained herein at any time without notice. TE expressly disclaims all implied warranties regarding the information contained herein, including, but not limited to, any implied warranties of merchantability or fitness for a particular purpose. The dimensions in this document are for reference purposes only and are subject to change without notice. Specifications are subject to change without notice. Consult TE for the latest dimensions and design specifications. If this document is printed it becomes uncontrolled. © 2013 TE Connectivity Ltd. family of companies. All Rights Reserved

Use of a leader to reduce printer calibration waste

Calibration leader instruction:

1. Look up the correct printer and marker size from table 1. It is important to select the correct size of marker and the amount of markers from table1, to construct your leader.
2. Cut the correct length of leader as shown in Figure 1.
3. Attach the leader as show in Figure 2, using thin adhesive tape, visually keeping the gap between markers as uniform as possible.
4. Load the ribbon as detailed in the Printer operator's manual.
5. Load the markers to be printed with the leader attached as detailed in the printer operator's manual.
6. Line the first marker of the leader as shown in Figure 3, close the printhead and commence printing.
7. On completion of each print job, detach the leader and re-use as per steps 1 to 7, when printing the same marker size and type.

Use of a leader to reduce printer calibration waste

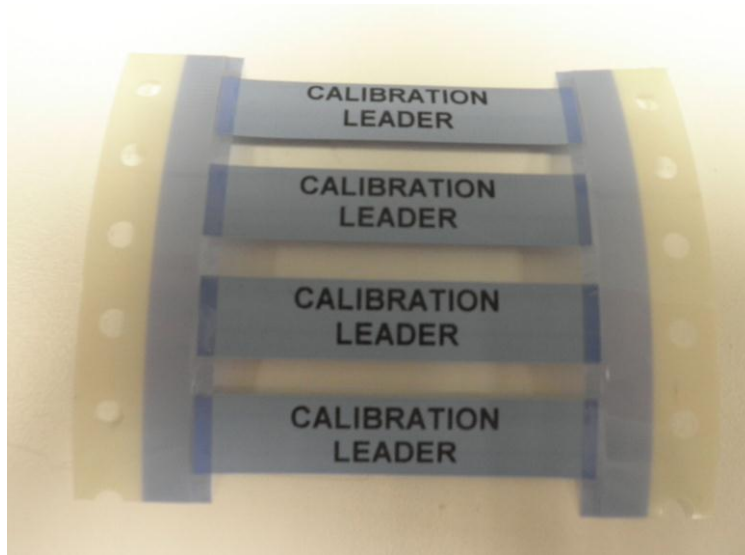


Figure 1, size $\frac{1}{4}$ = 4 markers for the TE3112

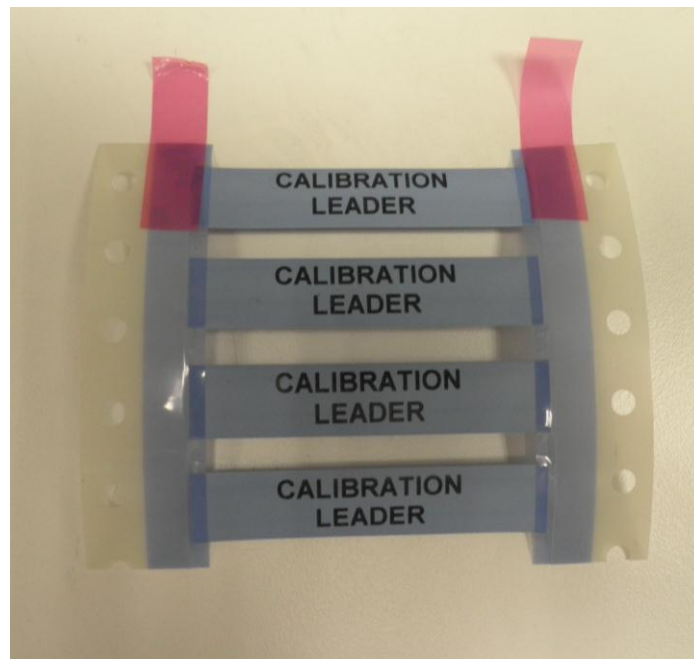


Figure 2, Fix thin adhesive tape to the leader

Use of a leader to reduce printer calibration waste

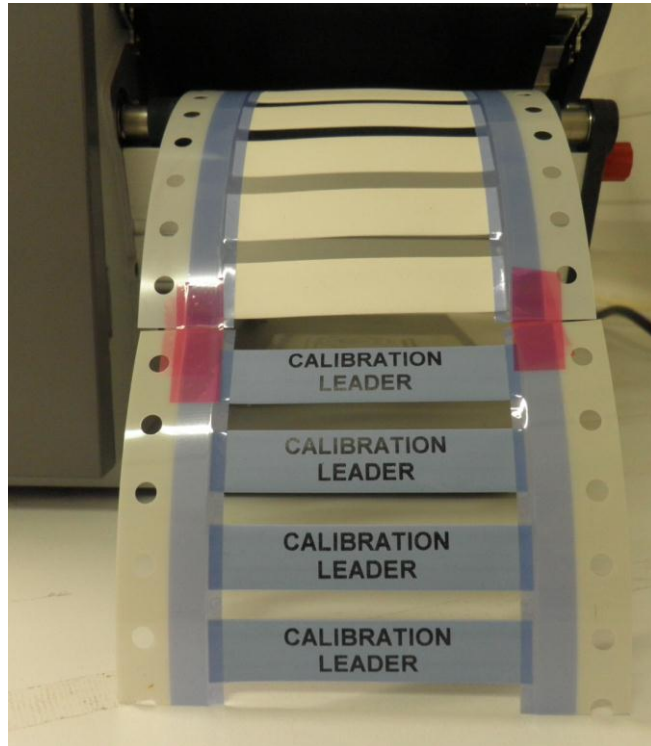


Figure 3, fix the leader to the front of new markers to be printed



Figure 4, pull the markers back into the printer with the first marker showing

Use of a leader to reduce printer calibration waste

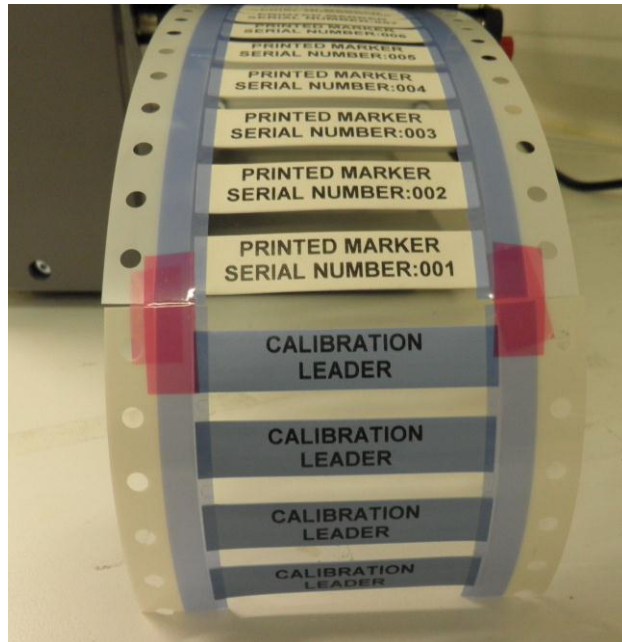


Figure 5, calibration on the leader and print starting on the first marker

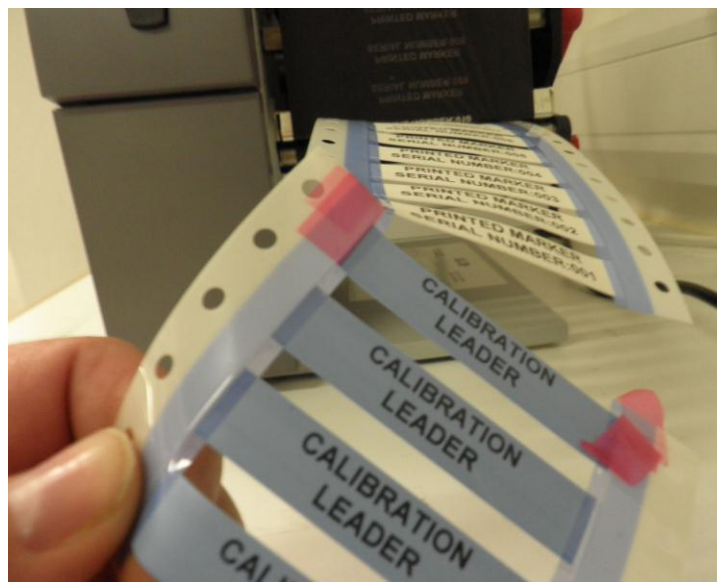


Figure 6, remove the leader and retain for further use



Doc. No: 411-121032
Issue: 1
Date: Jan 2014

Use of a leader to reduce printer calibration waste

Related documents

	TE document number	TE document title
1	411-121005	Identification Printer Product Ribbon Matrix
2	412-121029	T200 IDENT Printer Operators Manual
3	412-121026	TE3112 Operators Manual
4	412-121025	T6112DS Operators Manual
5	412-121024	TE3124 Operators Manual
6	411-121020	Thermal Transfer Printer cleaning instructions

Author: I Ridgeway
Issue date: Jan 2014
Page: 6 of 6

While TE Connectivity has made every reasonable effort to ensure the accuracy of the information in this document, TE does not guarantee that it is error-free, nor does TE make any other representation, warranty or guarantee that the information is accurate, correct, reliable or current. TE reserves the right to make any adjustments to the information contained herein at any time without notice. TE expressly disclaims all implied warranties regarding the information contained herein, including, but not limited to, any implied warranties of merchantability or fitness for a particular purpose. The dimensions in this document are for reference purposes only and are subject to change without notice. Specifications are subject to change without notice. Consult TE for the latest dimensions and design specifications. If this document is printed it becomes uncontrolled. © 2013 TE Connectivity Ltd. family of companies. All Rights Reserved