



**OSSP Panel Feedthrough Plug Receptacle  
Press-Fit Installation  
1059901-1**

Instruction Sheet

**408-4654**

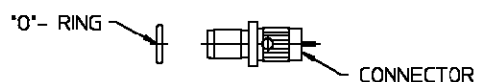
(was A.P. 47-020)

08 FEB 00 Rev O

EC 0990-0122-00

CONNECTOR TYPE	CABLE TYPE	TOOLS REQ'D
OSSP PANEL FEED-THROUGH PLUG RECEPTACLE PRESS-FIT INSTAL.	N/A	INSTALLATION TOOL: 2598-5212-54

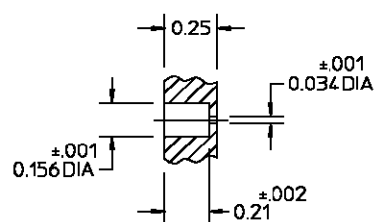
**CONNECTOR**



**ASSEMBLY OPERATIONS**

**1.0 MOUNTING HOLE PREPARATION**

- 1.1 DRILL  $.034 \pm .001$  DIAMETER  
PILOT HOLE THRU PANEL.
- 1.2 INSERT STEP REAMER INTO  
PILOT HOLE AND REAM  $.156 \pm .001$   
DIAMETER HOLE TO DEPTH SHOWN.
- 1.3 PLATE PER CUSTOMER APPLICATION  
RECOMMENDED MAXIMUM TOTAL PLATING  
IS  $.00019$ .
- 1.4 CLEAN IN SOLVENT.



**2.0 INSTALLATION OF CONNECTOR INTO PANEL**

- 2.1 PRESS CONNECTOR INTO PANEL  
USING INSTALLATION TOOL.

NOTE: CONNECTOR SHOULD BE BOTTOMED  
IN PANEL, AS SHOWN.

