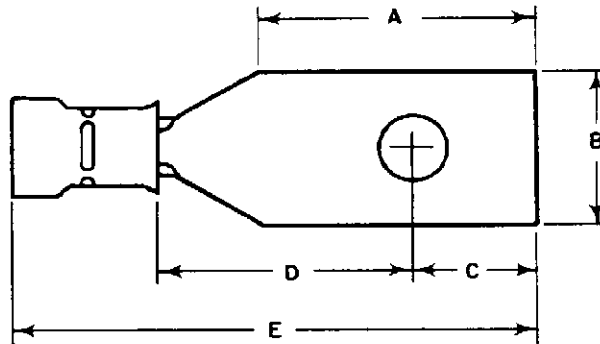




AMP INCORPORATED  
HARRISBURG, PENNA.

AMP DG TERMINALS FOR  
BU-SHIP TERMINAL BLOCKS

IS 1207	
RELEASED	4-19-60
REVISED	9-26-61



Listed below are AMP Diamond Grip (DG) Terminals for Bu-Ship Terminal Blocks. See AMP Instruction Sheet No. 1088 for Solistrand and Instruction Sheet No. 1198 for Pre-Insulated Diamond Grip (PIDG) Part Numbers.

BU-SHIPS BLOCKS	NAVY TONGUE SHAPE	NAVY WIRE SIZE	AWG WIRE SIZE	A + .031 - .031	B + .005 - .005	C + .010 - .010	D MIN.	E MAX.	STUD SIZE	AMP PART NUMBER
3TB, 4TB 5TB, 16TB 17TB	L80	1-2	22-16	.701	.390	.321	.621	1.314	8	328491
		2½-4	16-14	.701	.390	.321	.621	1.314	8	328492
		6-9	12-10	.701	.390	.321	.621	1.483	8	328493
6TB, 7TB 9TB	L81	1-2	22-16	.482	.302	.227	.465	1.064	6	328494
		2½-4	16-14	.482	.302	.227	.465	1.064	6	328495
		6-9	12-10	.482	.302	.227	.465	1.233	6	328496
15TB	L82	1-2	22-16	.482	.302	.227	.465	1.064	8	328497
		2½-4	16-14	.482	.302	.227	.465	1.064	8	328498
		6-9	12-10	.482	.302	.227	.465	1.233	8	328499
8TB	L83	1-2	22-16	.328	.277	.167	.277	.814	5	328500
		2½-4	16-14	.328	.277	.167	.277	.814	5	328501
		6-9	12-10	.328	.277	.167	.277	.998	5	328502
10TB & 11TB	L84	1-2	22-16	.450	.237	.195	.404	.970	6	328503
		2½-4	16-14	.450	.237	.195	.404	.970	6	328504
		6-9	12-10	.450	.237	.195	.404	1.155	6	328505
25TB	L85	1-2	22-16	.450	.237	.195	.404	.970	4	328506
		2½-4	16-14	.450	.237	.195	.404	.970	4	328507
		6-9	12-10	.450	.237	.195	.404	1.155	4	328508
26TB	L86	1-2	22-16	.296	.237	.143	.237	.751	4	328509
		2½-4	16-14	.296	.237	.143	.237	.751	4	328510
		6-9	12-10	.296	.237	.143	.237	.936	4	328511

Copyright 1961 by AMP Incorporated. All international rights reserved. AMP U. S. A. and foreign. AMP products covered by U. S. and foreign patents and/or patents pending.