



# AMP ★ MINIATURE COAXICON ★ PRINTED CIRCUIT BOARD SOCKET

<b>IS 1204</b>	
RELEASED	5-3-63
REVISED	10-14-81

## 1. INITIAL PREPARATION

- (a) Select required socket from chart in Figure 1.
- (b) Prepare board and mount socket as shown in Figure 2.
- (c) Terminate cable with COAXICON pin selected from I.S. 1770. If using hand tools, refer to I.S. 1770-2 for crimping procedure; if using pneumatic tools refer to I.S. 1770-3.

## 2. PIN INSERTION

Insert crimped COAXICON pin into socket until locking or latching tab is engaged behind ridge on pin. See Figure 3.

## 3. PIN REMOVAL

- (a) To remove pin from spring-latch socket, grasp cable behind ferrule and pull gently until socket disengages. See Figure 4a.
- (b) To remove pin from lock type socket, gently push downward on the ferrule while gently pulling it out of the socket. See Figure 4b.

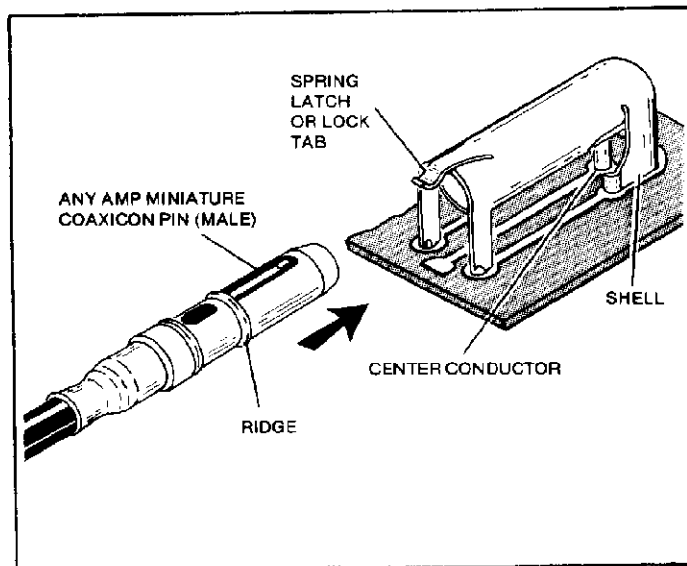


Figure 3

**CAUTION:** DO NOT LIFT OR PRY THE LOCKING OR LATCHING TAB OR DAMAGE MAY OCCUR.

PART NO.		TYPE	P.C. BOARD THICKNESS (in.)
.000030 GOLD PLATING	.000150 TIN PLATING		
50084-1	50084-4	SPRING-LATCH	1/16
50095-1	—	SPRING-LATCH	1/8
50105-1	—	LOCKING FEATURE	1/8
50107-1	50107-3	LOCKING FEATURE	1/16

Figure 1

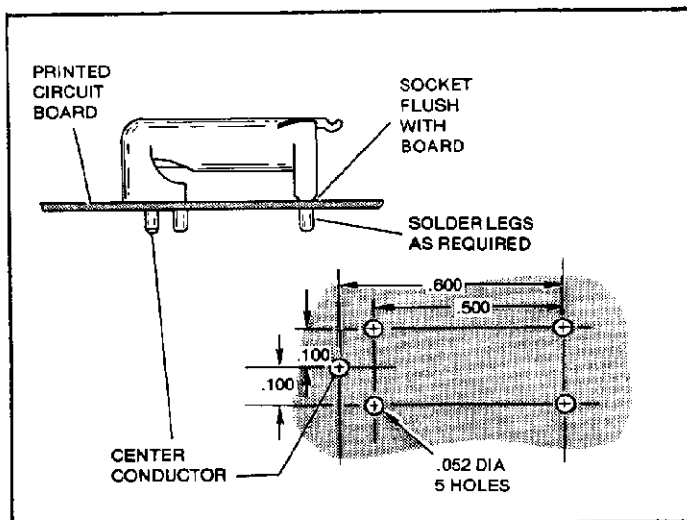


Figure 2

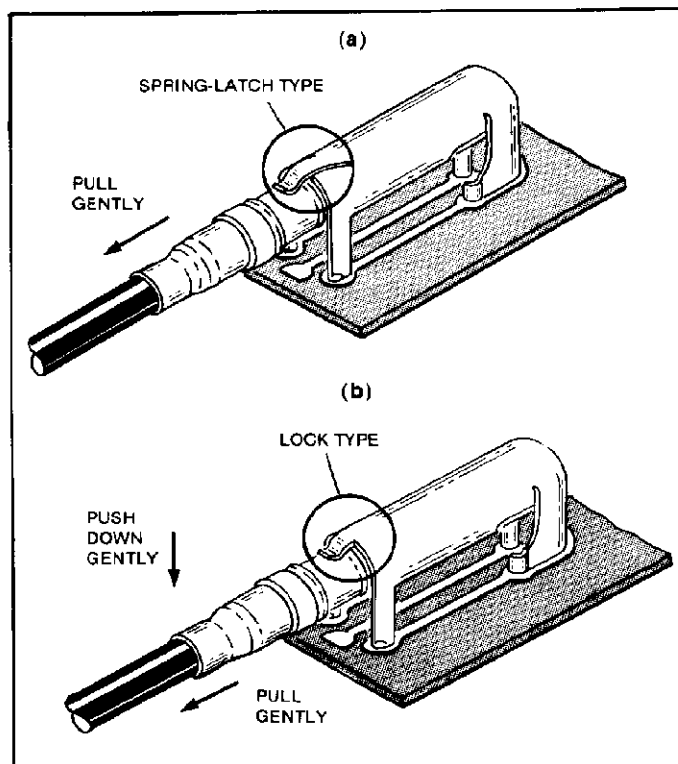


Figure 4

© Copyright 1963, 1975, 1977, 1981 by AMP Incorporated, Harrisburg, Pa. All International Rights Reserved. AMP Incorporated products covered by U.S. and Foreign Patents and/or Patents Pending.