

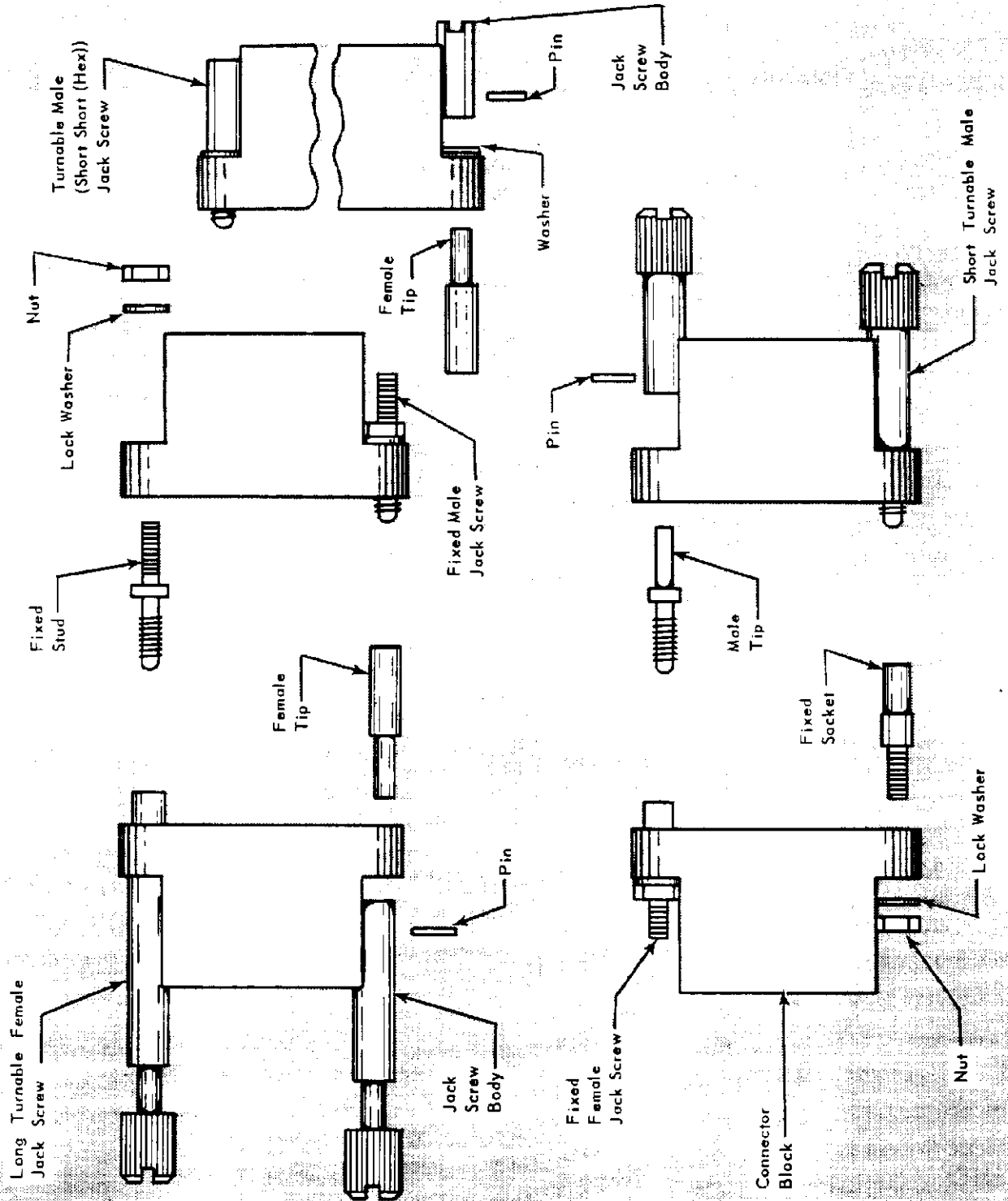


# A-MP JACK SCREW SELECTION CHART FOR SERIES "M", COAXICON\* AND MINIATURE DUALATCH\* CONNECTORS

IS 1189	
RELEASED	9-15-61
REVISED	12-23-63

CONNECTOR PRODUCTS  
DIVISION

© Copyright 1961, 1963 by AMP Incorporated. All international rights reserved. A-MP (TM) U.S.A. and foreign. A-MP (TM) products covered by U.S. and foreign patents and or patents pending.



JACK SCREW DESCRIPTION	JACK SCREW NO.		USES	
	MALE	FEMALE	FOR SERIES "M"	FOR MINIATURE DUALATCH†
Fixed	200874-□	200875-□	Fixed Jack Screws may be used on any Series "M", Miniature Dualatch or Coaxicon Block. They mate with Turnable Jack Screws.	FOR COAXICON
Long Turnable	200871-□	200867-□	1. Use with two-piece Shields. 1. Use without hardware on any Series "M" Block. 2. Use with Strain Relief Clamp on 34, 50, 75 and 104 Position Blocks. 3. Use with Pin Hood and/or Strain Relief Clamp on 75 and 104 Position Blocks.	1. Use with two-piece Shields. 1. Use on any Coaxicon Block.
Short Turnable	200868-□	200870-□	1. Use without hardware on any Series "M" Block. 2. Use with Strain Relief Clamp on 40, 60 and 132 Circuit Blocks. 3. Use with Pin Hood and/or Strain Relief Clamp on 132 Circuit Blocks.	1. Use on any Coaxicon Block.
Short Short (Hex) Turnable	201388-□	201389-□	1. Use (include washer) with Pin Hood on 14, 20, 26, 34 and 50 Position Blocks. 2. Use (include washer) with Strain Relief Clamp on 14, 20 and 26 Position Blocks. 3. Use (discard washer) with Pin Hood - Strain Relief Clamp combination on 14, 20, 26, 34 and 50 Position Blocks.	1. Use (include washer) with Pin Hood on 40 and 60 Circuit Blocks. 2. Use (discard washer) with Pin Hood - Strain Relief Clamp combination on 40 and 60 Circuit Blocks. 3. Use (discard washer) with Pin Hood - Strain Relief Clamp combination on 40 and 60 Circuit Blocks.
NOTE: A washer is supplied with each Short Short Jack Screw.				
† When using these Jack Screws with Miniature Dualatch Connectors, be sure the Connector Blocks do not contain threaded inserts.				

NOTE: ASSEMBLE A-MP JACK SCREWS USING A-MP TOOL NO. 91016 ACCORDING TO AMP INSTRUCTION SHEET NO. 7126.