

ITB CARD EDGE CONNECTOR

The ITB (Inverted Thru-Board) Card Edge Connector provides direct power connection between driver boards to the underside of LED array boards. This 2 position, SMT card edge connector provides a perpendicular mating, cable-less, space saving power connection that is an excellent for compact LED assembly designs such as those found in today's retrofit lamps & bulbs. The low profile design has a 1.5mm height above the LED mounted board and accepts either 1.0mm or 1.2mm thick driver boards.

ELECTRICAL

- Current Rating: 3.0A MAX
- Voltage Rating: 50V (IEC) / 250 VAC/DC (UL)
- Dielectric Withstand Voltage: 1500 VAC

MECHANICAL

- Operating temperature: - 40°C to +125°C
- Mating cycles: 5 max.
- Mating force: 20N max

MATERIALS

- Housing: High temperature resistant thermoplastic
UL94VO flammability rating
- Contact: Copper alloy, tin over nickel plating

APPLICATIONS AND SPECIFICATIONS

- UL 1977
- IEC 60838-2-2
- Application specification #: [114-32027](#)
- Product Specification #: [108-106075](#)

KEY FEATURES

- The ITB card edge connector is surface mounted at the same time as other devices on the printed circuit board (PCB) significantly reducing secondary processes
- One piece mating solution for faster and easier assembly operation
- Low profile space saving design. The 1.5mm height above the PCB minimizes LED light obstruction
- Offered in two versions to accept either
- 1.0mm or 1.2mm thick mating PCB's
- The connector surface mount hold downs provide stability during driver board mating and un-mating
- Designed with round corners to minimize shadowing
- Flat top surface allows for vacuum pick up
- Tape and reel packaging for high speed SMT processing

APPLICATIONS

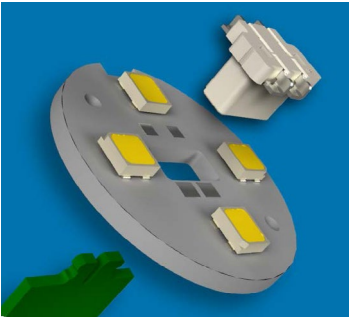
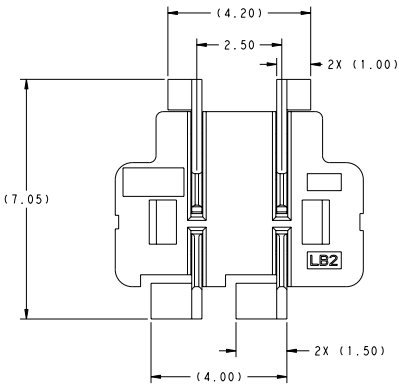
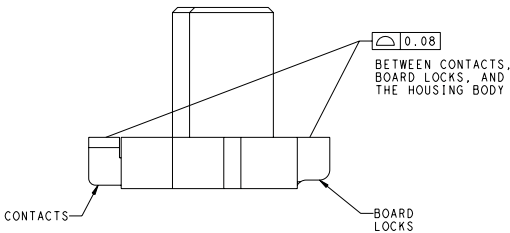
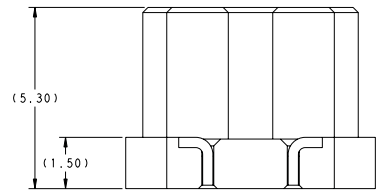
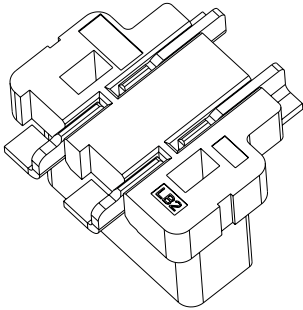
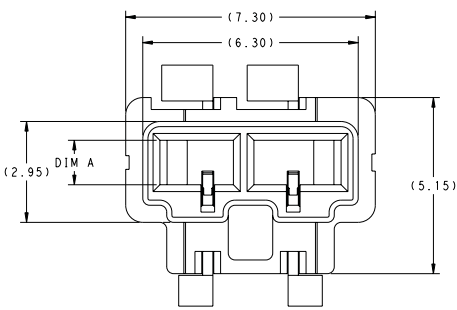
- Edison style LED bulbs
- MR16 & PAR series LED replacement lamps
- Indoor and outdoor LED lighting devices
- Various non-lighting applications that require a cable-less, compact, right angle, inverted board to board interconnect

PRODUCT OFFERING

- [1-1971748-2](#): 1mm thick mating PCB
- [1971748-2](#): 1.2mm thick mating PCB

ITB CARD EDGE CONNECTOR

PRODUCT DIMENSIONS



A Dimension	TE Part Number	PCB Thickness
1.0	1-1971748-2	1.0mm
1.3	1971748-2	1.2mm

Contact Our Product Team

We make it easy to connect with our experts and are ready to provide the support you need. Visit te.com/support to chat with a Product Information Specialist.

te.com/inverted-thru-board-connector

TE Connectivity, TE, TE connectivity (logo) and EVERY CONNECTION COUNTS are trademarks owned or licensed by the TE Connectivity plc family of companies. All other logos, products and/or company names referred to herein might be trademarks of their respective owners.

While TE has made every reasonable effort to ensure the accuracy of the information in this document, TE does not guarantee that it is error-free, nor does TE make any other representation, warranty or guarantee that the information is accurate, correct, reliable or current. TE reserves the right to make any changes to the information contained herein without prior notice. TE Connectivity's obligations shall only be as set forth in TE Connectivity's Standard Terms and Conditions of Sale for this product and in no case will TE Connectivity be liable for any incidental, indirect, or consequential damages arising out of the sale, resale, use, or misapplication of the product. TE expressly disclaims any implied warranties with respect to the information contained herein, including, but not limited to, implied warranties of merchantability or fitness for a particular purpose. Dimensions, specifications and/or information contained herein are for reference purposes only and are subject to change without notice. Consult TE for the latest dimensions, specifications and/or information. Users of TE Connectivity products must make their own assessment as to whether the respective product is suitable for the respective desired application.

©2025 TE Connectivity. All Rights Reserved.

06-25