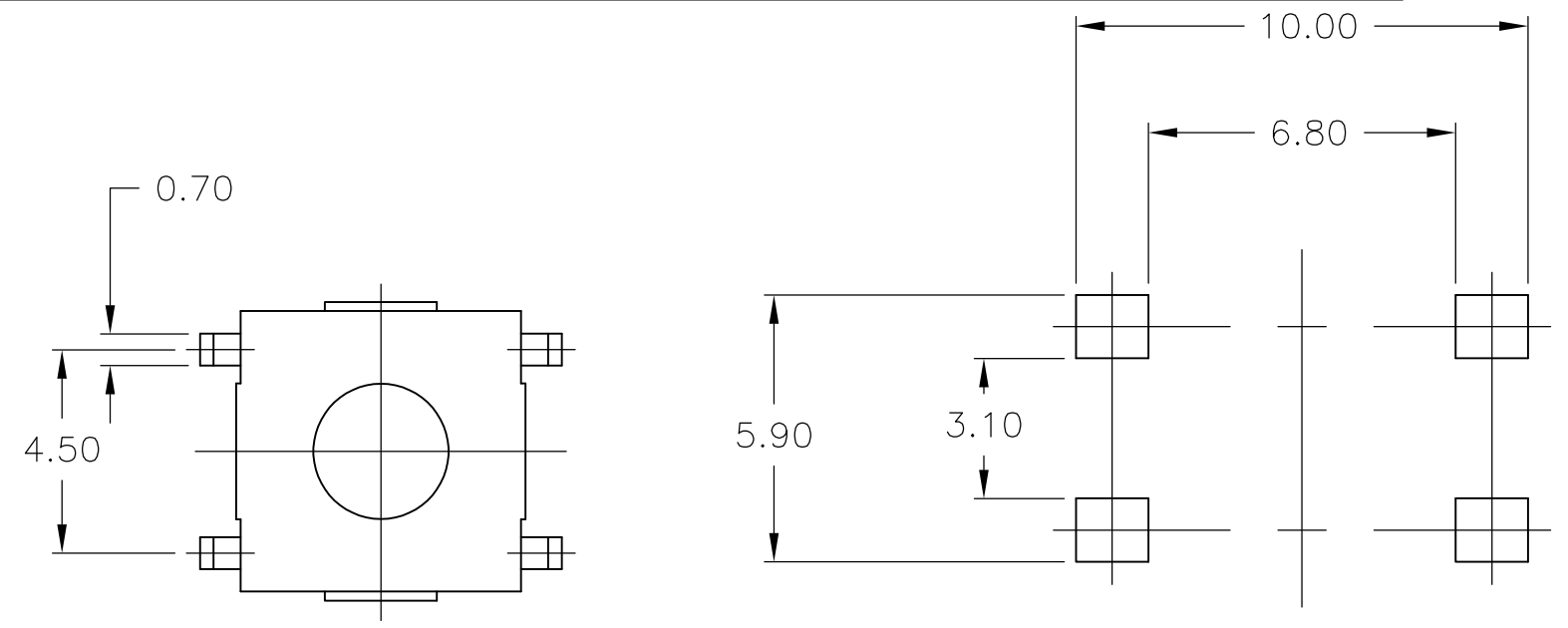


THIS DRAWING IS UNPUBLISHED. RELEASED FOR PUBLICATION  
 © COPYRIGHT - By - ALL RIGHTS RESERVED.

LOC	DIST	REVISIONS					
AD	0	P	LTR	DESCRIPTION	DATE	DWN	APVD
			E2	REVISED PER ECO-14-014370	23SEP2014	NK	RH



P C B LAND DIMENSION

**MATERIALS:**  
 CASE: PPS, 94V-0, BLACK  
 COVER: COPPER ALLOY, TIN PLATE  
 ACTUATOR: NYLON 6T UL94V-0, COLOR- RED  
 MOVING CONTACT: COPPER ALLOY, SILVER FINISH  
 FIXED CONTACT/TERMINAL: COPPER ALLOY, SILVER FINISH

**ELECTRICAL:**  
 MAX CONTACT RATING: 50MILLIAMPS@24V DC  
 MIN CONTACT RATING: 10MICROAMPS@1V DC  
 INITIAL CONTACT RESISTANCE: 100 MILLIOHMS MAX  
 INSULATION RESISTANCE: 100 MEGOHMS AT 250 VDC MIN  
 DIELECTRIC STRENGTH: 500 VAC 50/60 HZ FOR 1 MINUTE.  
 LIFE EXPECTANCY: 100,000 CYCLES MIN.

**MECHANICAL:**  
 ACTUATION FORCE: 260±30g  
 ACTUATION TRAVEL 0.25<sup>+0.2</sup><sub>-0.1</sub>  
 LIFE EXPECTANCY: 150,000 CYCLES

**ENVIRONMENTAL:**  
 OPERATING TEMPERATURE: -35°C TO +85°C  
 STORAGE TEMPERATURE: -35°C TO +85°C  
 RESISTANCE TO SOLDER HEAT PER 109-201 COND B.

- NOTES:**
- TAPE AND REEL PACKAGING PER EIA-481, PITCH 12MM, WIDTH 16MM. 1500 PCS. PER REEL.
  - ALL MATERIALS AND FINISHES SHALL COMPLY WITH EU DIRECTIVE 2002/95/EC OF 27JAN2003 (ROHS)

( ) - INDICATES MOMENTARY POSITION

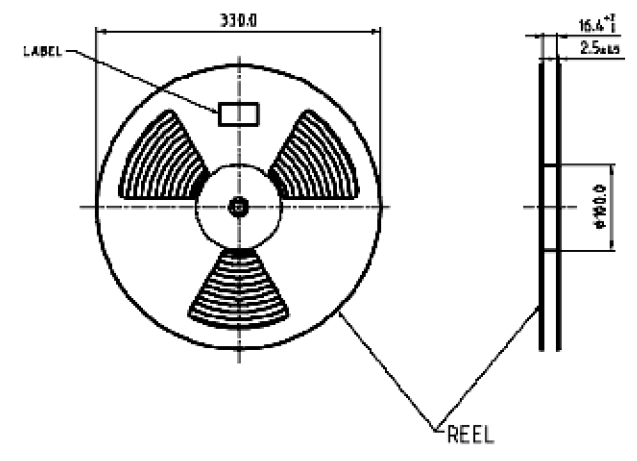
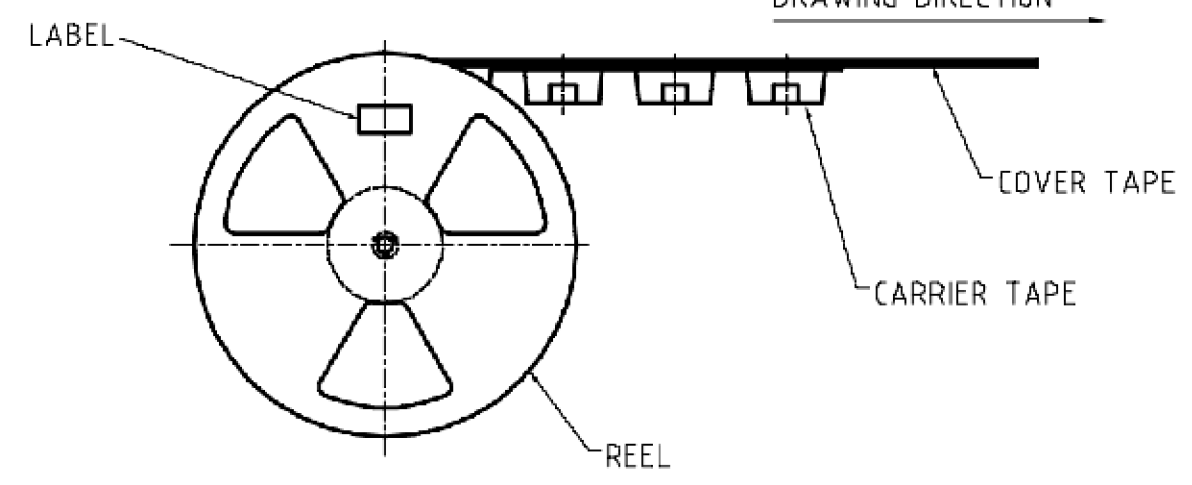
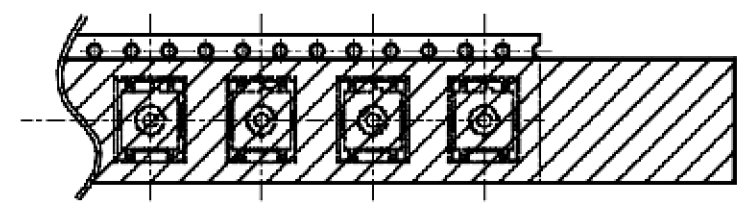
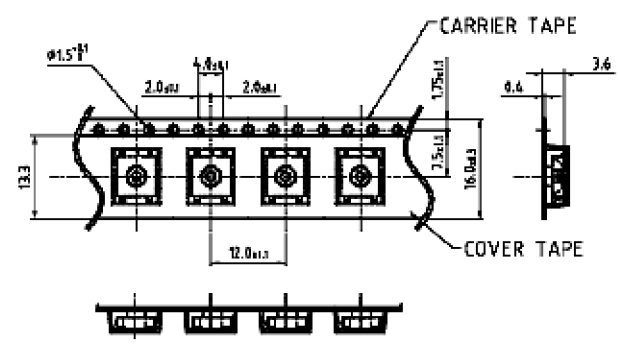
CIRCUIT CHARACTERISTICS	
CONTACT POSITION	CIRCUIT DIAGRAM
OFF	
(ON) 1-3 2-4	

FSM4LPA	1571621-1
FSM4LPATR	4-1437565-3
OLD T&B P/N	PART NUMBER

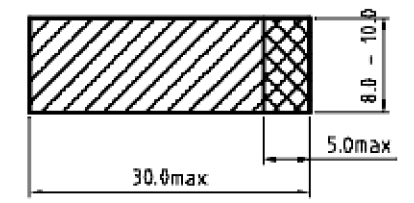
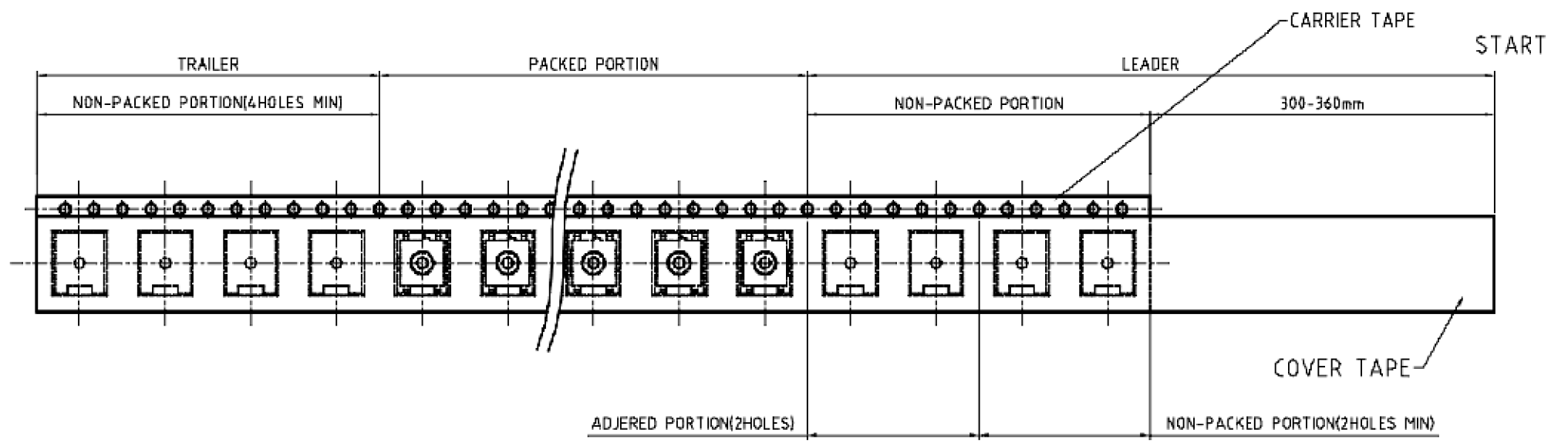
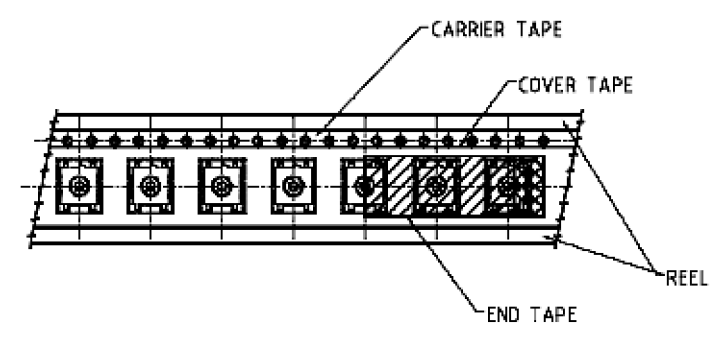
THIS DRAWING IS A CONTROLLED DOCUMENT.		DWN	M.BINNER	17SEP02	 TE Connectivity	NAME		TACTILE SWITCH 6X6mm	
DIMENSIONS:		CHK	M.SARVER	18SEP02		PRODUCT SPEC		LOW PROFILE,	
TOLERANCES UNLESS OTHERWISE SPECIFIED:		APVD	M.SARVER	18SEP02		APPLICATION SPEC		SURFACE MOUNT	
mm		MATERIAL		WEIGHT		SIZE	CAGE CODE	DRAWING NO	RESTRICTED TO
0 PLC	± -	-		-	A3	00779	C-4-1437565-3	-	
1 PLC	± -	-		-	CUSTOMER DRAWING		SCALE	SHEET	REV
2 PLC	± 0.30	-		-	-		6:1	1 OF 2	E2
3 PLC	± -	-		-	-				
4 PLC	± -	-		-	-				
ANGLES	± -	-		-	-				
FINISH	-	-		-	-				

THIS DRAWING IS UNPUBLISHED. RELEASED FOR PUBLICATION  
 © COPYRIGHT - By - ALL RIGHTS RESERVED.

LOC	DIST	REVISIONS					
AD	0	P	LTR	DESCRIPTION	DATE	DWN	APVD
		-		SEE SHEET 1	-	-	-



-THE DIMENSION OF CARRIER TAPE, COVER TAPE AND REEL-



THIS DRAWING IS A CONTROLLED DOCUMENT.		DWN	M.BINNER	17SEP02	 TE Connectivity	NAME		TACTILE SWITCH 6X6mm					
DIMENSIONS:		CHK	M.SARVER	18SEP02		PRODUCT SPEC		LOW PROFILE,					
mm		APVD	M.SARVER	18SEP02		APPLICATION SPEC		SURFACE MOUNT					
		TOLERANCES UNLESS OTHERWISE SPECIFIED:		WEIGHT		SIZE		CAGE CODE	DRAWING NO	RESTRICTED TO			
MATERIAL		FINISH		-		A3		00779	C-4-1437565-3	-			
-		-		-		CUSTOMER DRAWING		SCALE	6:1	SHEET	2 OF 2	REV	E2