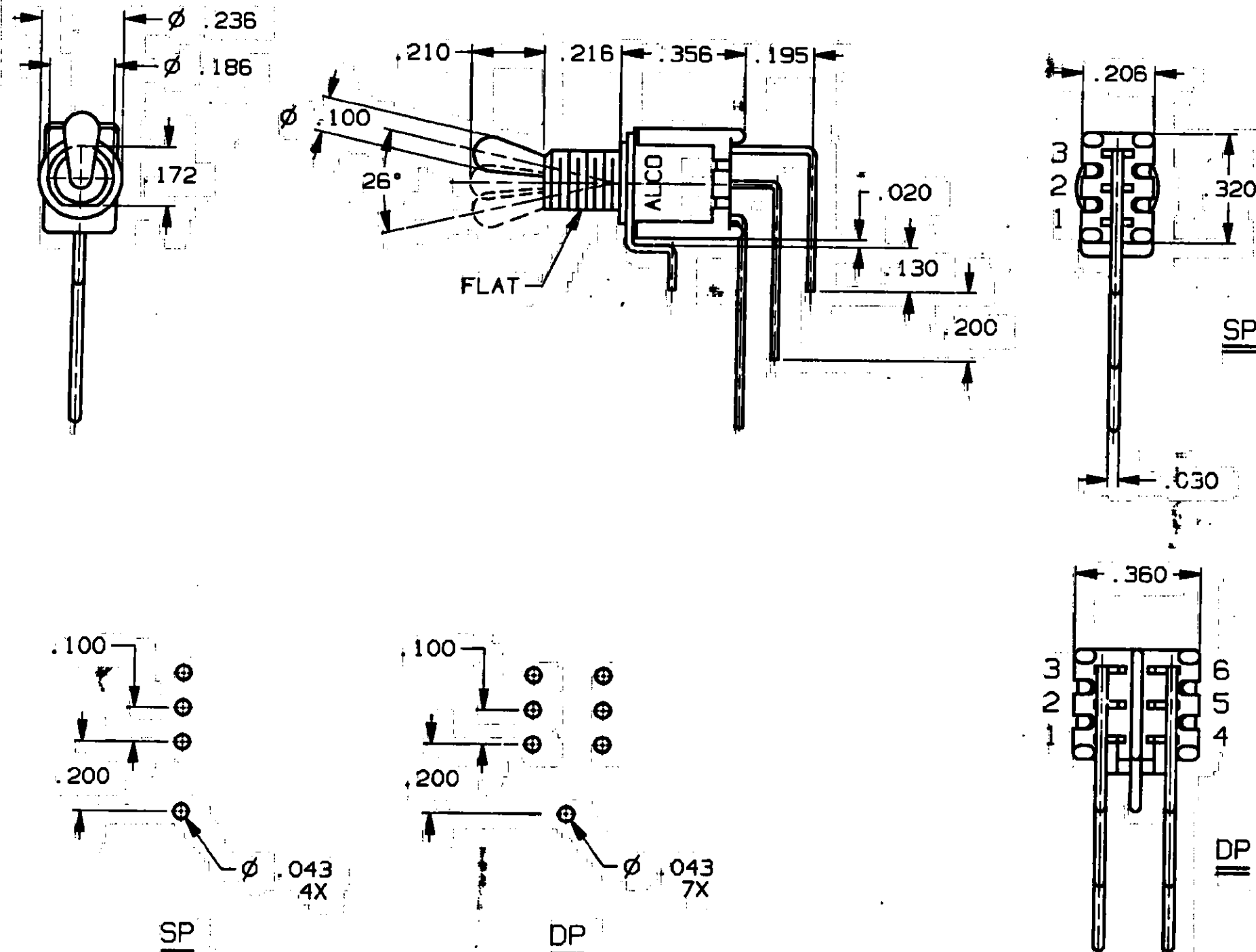


CONVERSION CHART	
INCH	MM
.002	0.05
.010	0.25
.015	0.38
.020	0.51
.030	0.76
.043	1.09
.100	2.54
.130	3.48
.150	3.81
.172	4.37
.186	4.72
.195	4.95
.200	5.08
.206	5.23
.210	5.33
.216	5.49
.236	5.99
.320	8.13
.356	9.04
.360	9.14



RECOMMENDED HOLE LAYOUT
TOLERANCE ± .002 UNLESS OTHERWISE NOTED

3 SPECIFICATIONS:

MATERIALS:
CASE: HIGH TEMPERATURE POLYESTER.
FRAME: STEEL, TIN PLATED.
ACTUATOR: COPPER ALLOY, NICKEL PLATED.
MOVABLE CONTACT: COPPER ALLOY, GOLD OVER NICKEL PLATE.
STATIONARY CONTACT: COPPER ALLOY, GOLD OVER NICKEL PLATE.
TERMINALS: COPPER ALLOY, TIN LEAD PLATED.
TERMINAL SEAL: EPOXY

ELECTRICAL:
CONTACT RATING: 0.4 VA @ 20 VDC OR PEAK AC
INITIAL CONTACT RESISTANCE: 20 MILLIOHMS MAX.
INSULATION RESISTANCE: 1,000 MEGOHMS AT 500 VDC MIN.
DIELECTRIC STRENGTH: 1,000 VOLTS RMS AT SEA LEVEL
LIFE EXPECTANCY: 80,000 CYCLES (2 POSITION)
60,000 CYCLES (3 POSITION)

ENVIRONMENTAL:
OPERATING TEMPERATURE: -22°F TO +185°F (-30°C TO +85°C)
STORAGE TEMPERATURE: -67°F TO +185°F (-55°C TO +85°C)

3 NOTES:
1. INTERPRET DRAWING PER ASME Y14.5M-1994.

TERMINALS CONNECTED WHEN TOGGLE IS IN POSITIONS SHOWN.			
FUNCTION CODE			
TT21PG-VRA-1	2 TO 1 5 TO 4	OFF	2 TO 3 5 TO 6
TT21NG-VRA-1	2 TO 1 5 TO 4	NONE	2 TO 3 5 TO 6
TT11EG-VRA-1	2 TO 1	OFF	2 TO 3
TT11DG-VRA-1	2 TO 1	NONE	2 TO 3

NOTE:
TERMINAL DESIGNATION NUMBERS ARE FOR REFERENCE ONLY AND DO NOT APPEAR ON SWITCHES.

REV	B
REVISIONS	0G3C-0194-05 MZ 27MAR07

3 CUSTOMER DRAWING
SPECIFICATIONS ARE SUBJECT TO CHANGES WITHOUT NOTICE

AUGAT D/N 40158

 THIRD ANGLE PROJECTION TOLERANCES (EXCEPT AS NOTED) ANGULAR = ±1° DECIMAL .XX = ±.010 DECIMAL .XXX = ±.010 DECIMAL .XXXX = ±.010	UNLESS OTHERWISE SPECIFIED DIMENSIONS ARE IN INCHES DO NOT SCALE PRINT	ORIGINAL DATE OF DRAWING: 8-6-83	TYCO ELECTRONICS TITLE: CUSTOMER DRAWING TOGGLE SWITCH VRA SP, DP DMG. NO. 4-1437561-8 REV. B	
	FILE NAME: 401580.T	DIRECTORY: TINSWCH		DRAWN: E. RODRIQUEZ
	MATERIAL: SEE SPECIFICATIONS	CHECKED: B. BUCKHEIT		DATE: 8-8-83
	FINISH: SEE SPECIFICATIONS	APPROVED: RMM		DATE: 8-9-83
	CODE IDCNT. NO. 91506	DMG. SIZE C		