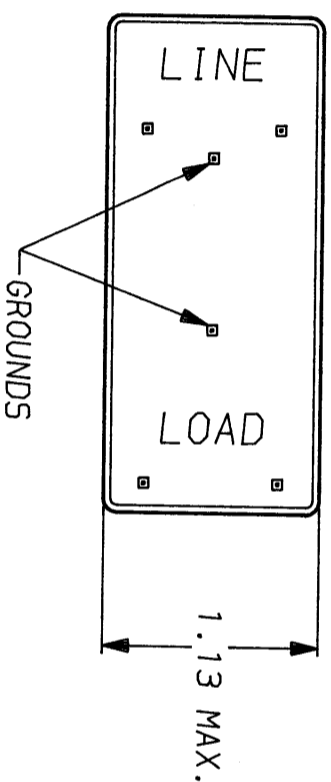
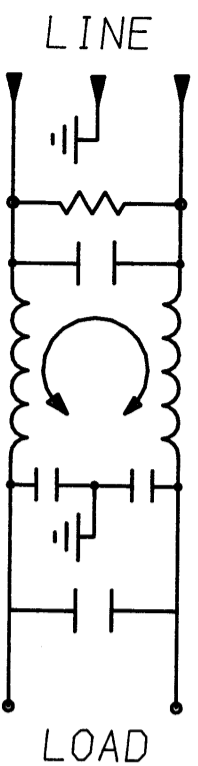
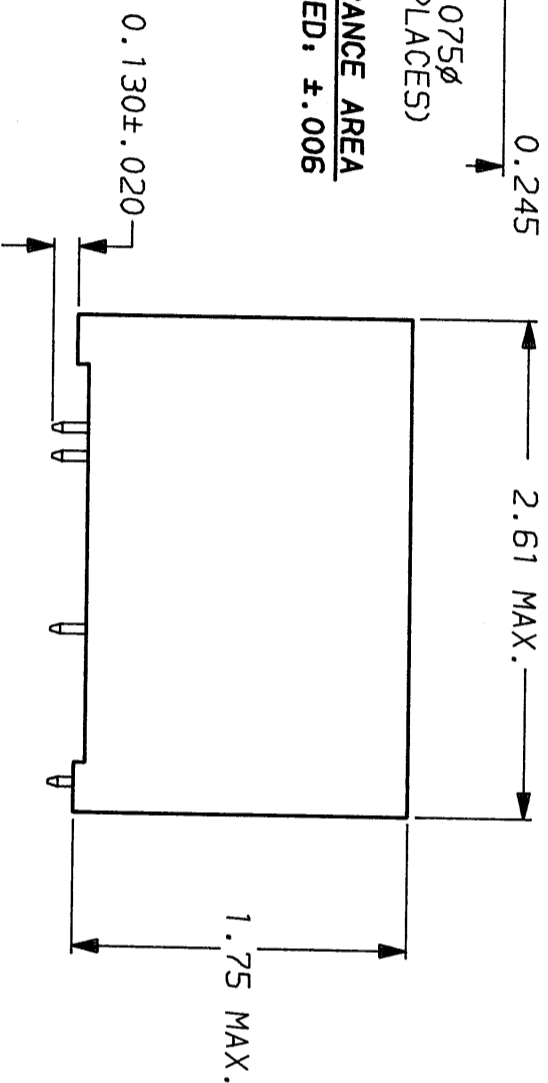


**RECOMMENDED MOUNTING HOLES & CLEARANCE AREA TOLERANCE UNLESS OTHERWISE SPECIFIED, ±.006**



PINS: .065 MAX. DIAGONAL (6 PLACES)

Approved By: *C. Weverka* Date: 7-10-90 Rev: 3

**SAFETY ORGANIZATION(S):**  
THIS FILTER HAS BEEN FORMALLY RECOGNIZED, CERTIFIED OR APPROVED BY THE LISTED AGENCY. THEREFORE, ALL TEST/REQUIREMENTS SPECIFIED IN THE LATEST REVISION OF THE FOLLOWING AGENCY STANDARDS HAVE BEEN MET:

UL RECOGNIZED  
CSA CERTIFIED  
VDE APPROVED  
  
UL 1283  
CSA 22.2, NO. 0, 0.4, 8  
VDE 565-3

**OPERATING SPECIFICATIONS:**  
LINE VOLTAGE/CURRENT:

3 AMP., 120/250 VAC  
2 AMP./40°C, 250 VAC  
50-60HZ

LINE FREQUENCY:  
MAX. LEAKAGE CURRENT, EACH  
LINE TO GROUND  
OPERATING AMBIENT TEMP. RANGE:  
-10°C TO +60°C @ RATED CURRENT,  $I_r$

IN AN AMBIENT,  $T_a$ , HIGHER THAN 60°C, THE MAXIMUM OPERATING CURRENT,  $I_o$ , IS AS FOLLOWS:

$$I_o = I_r \sqrt{\frac{85 - T_a}{25}}$$

RELIABILITY SPECIFICATIONS:  
STORAGE TEMPERATURE:  
HUMIDITY:  
CURRENT OVERLOAD TEST:  
6 TIMES RATED CURRENT FOR 8 SECONDS

TEST SPECIFICATIONS:  
INDUCTANCE:  
CAPACITANCE: (MEASURED @ 1 KHZ, 0.25 VAC MAX., 25°C ±1°C)  
LINE TO GROUND:  
LINE TO LINE:  
DISCHARGE RESISTOR:  
LINE/GROUND AND LINE/LINE  
INSULATION RESISTANCE  
(WITHOUT DISCHARGE RESISTOR)  
9.57mH NOMINAL  
8000pF ±20%  
0.37µF ±20%  
820 KΩ  
6000 MΩ (MIN) AT 100 VDC  
20°C AND 50% RH

RECOMMENDED RECEIVING INSPECTION HIPOT:  
LINES TO GROUND: 2250 VDC FOR 1 MINUTE  
LINE TO LINE: 1450 VDC FOR 1 MINUTE  
FILTER APPROVAL:  
THE BEST WAY TO SELECT AND QUALIFY A FILTER IS FOR YOUR ENGINEERING TO TEST THE UNIT IN YOUR EQUIPMENT.

50Ω - 50Ω (MINIMUM) INSERTION LOSS	
FREQUENCY MHZ	.01 .05 .07 .15 .50 1 5 10 30
COMMON DB	11 24 27 36 43 40 40 40 40
DIFF. DB	— 10 20 42 68 68 67 62 50

This document is proprietary to CORCOM INC. and is not to be reproduced nor used for manufacturing purposes except on CORCOM's order or prior written consent.



LIBERTYVILLE, IL 60048

POWER LINE FILTER

SCALE: NTS DATE: 2-8-87 DRG. NO.: 3EYP.03  
DRW. BY: LJD ORIGINATOR: CFM REV.