

SAFETY ORGANIZATION(S)

THIS FILTER HAS BEEN FORMALLY RECOGNIZED, CERTIFIED OR APPROVED BY THE LISTED AGENCY. THEREFORE, ALL TEST/REQUIREMENTS SPECIFIED IN THE LATEST REVISION OF THE FOLLOWING AGENCY STANDARDS HAVE BEEN MET.

UL RECOGNIZED
 CSA 22.2, NO.0,0.4,8
 VDE 0565-3, 0625

OPERATING SPECIFICATIONS

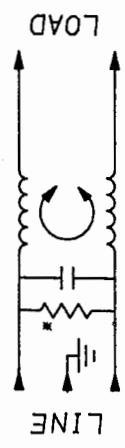
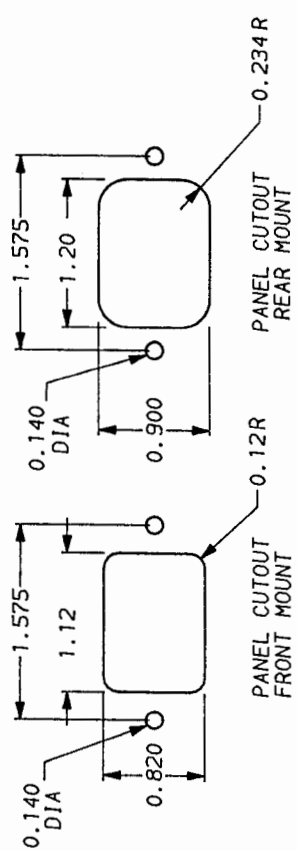
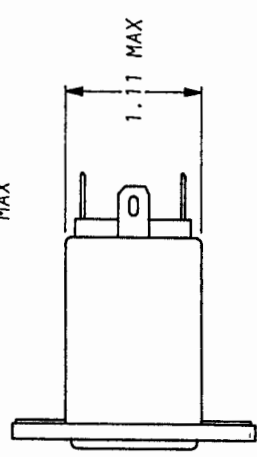
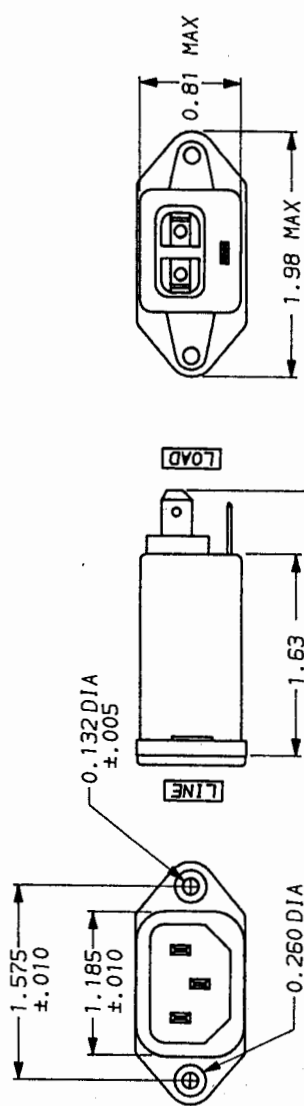
LINE VOLTAGE/CURRENT,
 3 AMP., 120/250 VAC
 3 AMP./40°C, 250 VAC
 50-60HZ
 30°C
 LINE FREQUENCY,
 MAX. CASE RISE & RATED CURRENT,
 MAX. LEAKAGE CURRENT, EACH
 LINE TO GROUND
 2µA at 120V 60 Hz
 5µA at 250V 50 Hz
 OPERATING AMBIENT TEMP. RANGE,
 -10°C TO +40°C @ RATED CURRENT, I_r

IN AN AMBIENT, T_a, HIGHER THAN 40°C, THE MAXIMUM OPERATING CURRENT, I_o, IS AS FOLLOWS:

$$I_o = I_r \sqrt{\frac{85 - T_a}{45}}$$

RELIABILITY SPECIFICATIONS

STORAGE TEMPERATURE,
 HUMIDITY,
 CURRENT OVERLOAD TEST,
 1.45 mH NOMINAL
 CAPACITANCE, (MEASURED @ 1 KHz, 0.25 VAC MAX., 25°C ±1°C)
 ZERO
 LINE TO GROUND,
 LINE TO LINE,
 DISCHARGE RESISTOR,
 1.5 MΩ
 6000 MΩ (MIN) AT 100 VDC
 20°C AND 50% RH
 INSULATION RESISTANCE
 (W/O DISCHARGE RESISTOR)
 RECOMMENDED RECEIVING INSPECTION HIPOT,
 LINES TO GROUND,
 1500 VAC FOR 1 MINUTE
 LINE TO LINE,
 1450 VDC FOR 1 MINUTE
 FILTER APPROVAL,
 THE BEST WAY TO SELECT AND QUALIFY A FILTER IS FOR YOUR ENGINEERING TO TEST THE UNIT IN YOUR EQUIPMENT.



FREQUENCY MHZ	50n - 50n (MINIMUM) INSERTION LOSS							
COMMON	.05	.10	.15	.50	1	5	10	30
DIFF. dB	5	10	15	25	27	30	27	22
	-	-	1	10	18	30	31	31

This document is proprietary to CORCOM INC. and is not to be reproduced nor used for manufacturing purposes except on CORCOM's order or prior written consent.

TOLERANCE EXCEPT AS NOTED
 DECIMAL, .XXX .XX .X ANGLES
 ENGLISH, ±.025 ± 1°
 METRIC, ±
 MATERIAL:
 AS SUPPLIED

FINISH:
 AS SUPPLIED

corcom
 LIBERTYVILLE, IL 60048

POWER LINE FILTER

SCALE	DATE	DRG. NO.	REV.
NTS	9-19-91		3EBH1.01
DRN. BY	CFW	ORIGINATOR	CFW

*RESISTOR ADDED TO PRODUCT BUILT AFTER 3-30-92 (9212).