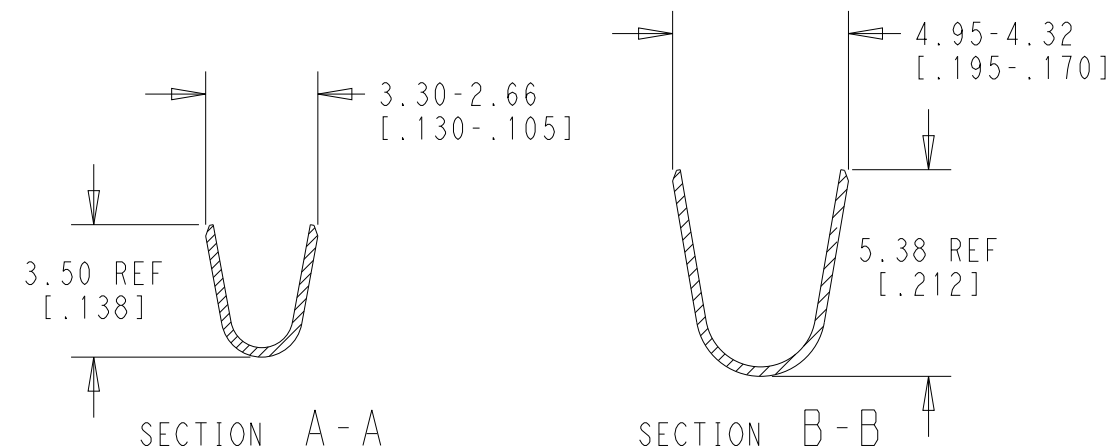
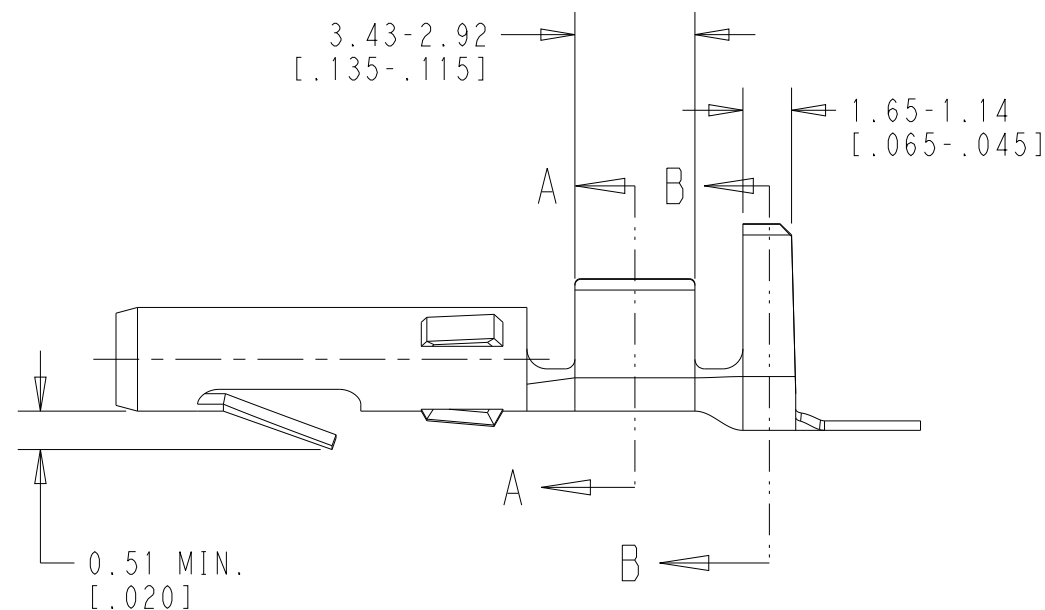
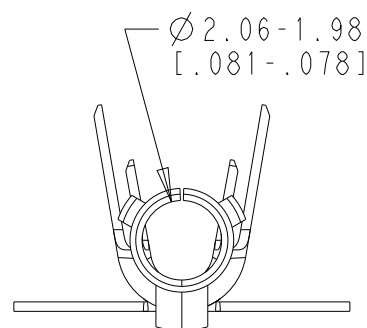
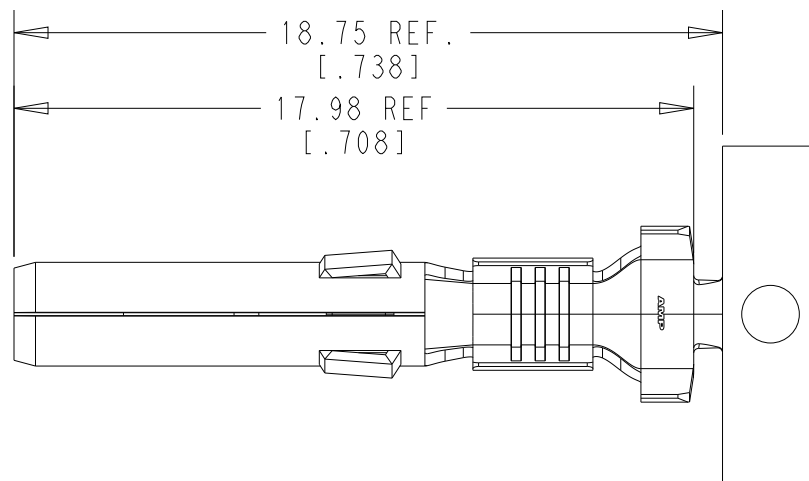
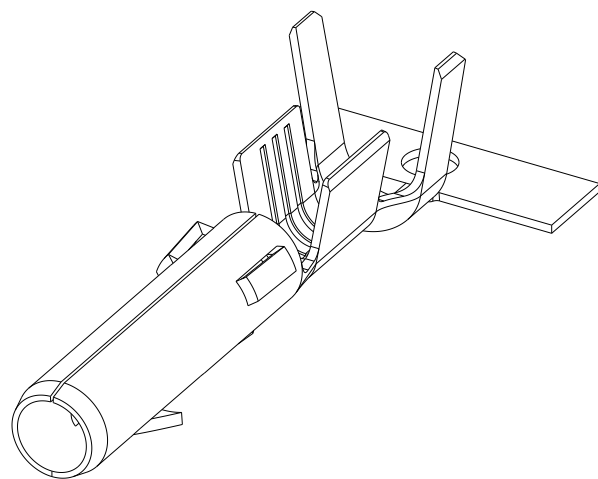


REVISIONS

P	LTR	DESCRIPTION	DATE	DWN	APVD
	H	REVISED PER ECR-12-001565	31JAN2012	KH	TM
	H1	REVISED PER ECN-23-233438	02OCT2023	WLS	VS



NOTES:

- WIRE RANGE: 2 WIRES OF 0.8-0.9mm<sup>2</sup> [18 AWG] OR 1 WIRE OF 0.8 - 0.9mm<sup>2</sup> [18AWG] AND 1 WIRE OF 1.25 - 1.4 mm<sup>2</sup> [16AWG].
- INSULATION RANGE: 2 WIRES OF 2.92 [.115] MAX DIA EACH STACKED.
- DIMENSIONS IN BRACKETS ARE IN INCHES.

PRE-TIN	PH. BRONZE	350557-4
PRE-TIN	BRASS	350557-1
FINISH	MATERIAL	PART NO

THIS DRAWING IS A CONTROLLED DOCUMENT.		DWN 23OCT2008 RAGHAVENDRA														
DIMENSIONS: mm [INCHES]		CHK 23OCT2008 CASH CHRIS														
TOLERANCES UNLESS OTHERWISE SPECIFIED:		APVD 23OCT2008 CASH CHRIS	NAME SOCKET COMMERCIAL MATE-N-LOK													
<table border="0"> <tr> <td>0 PLC</td> <td>±-</td> </tr> <tr> <td>1 PLC</td> <td>±-</td> </tr> <tr> <td>2 PLC</td> <td>±-</td> </tr> <tr> <td>3 PLC</td> <td>±0.25[.010]</td> </tr> <tr> <td>4 PLC</td> <td>±-</td> </tr> <tr> <td>ANGLES</td> <td>±1°0'</td> </tr> </table>		0 PLC	±-	1 PLC	±-	2 PLC	±-	3 PLC	±0.25[.010]	4 PLC	±-	ANGLES	±1°0'	PRODUCT SPEC 108-1000	SIZE A3	
0 PLC	±-															
1 PLC	±-															
2 PLC	±-															
3 PLC	±0.25[.010]															
4 PLC	±-															
ANGLES	±1°0'															
MATERIAL SEE TABLE		APPLICATION SPEC 114-1012	CAGE CODE 00779	DRAWING NO C-350557												
FINISH SEE TABLE		WEIGHT -	RESTRICTED TO -													
-		CUSTOMER DRAWING	SCALE 5:1	SHEET 1 OF 1												
			REV H1													