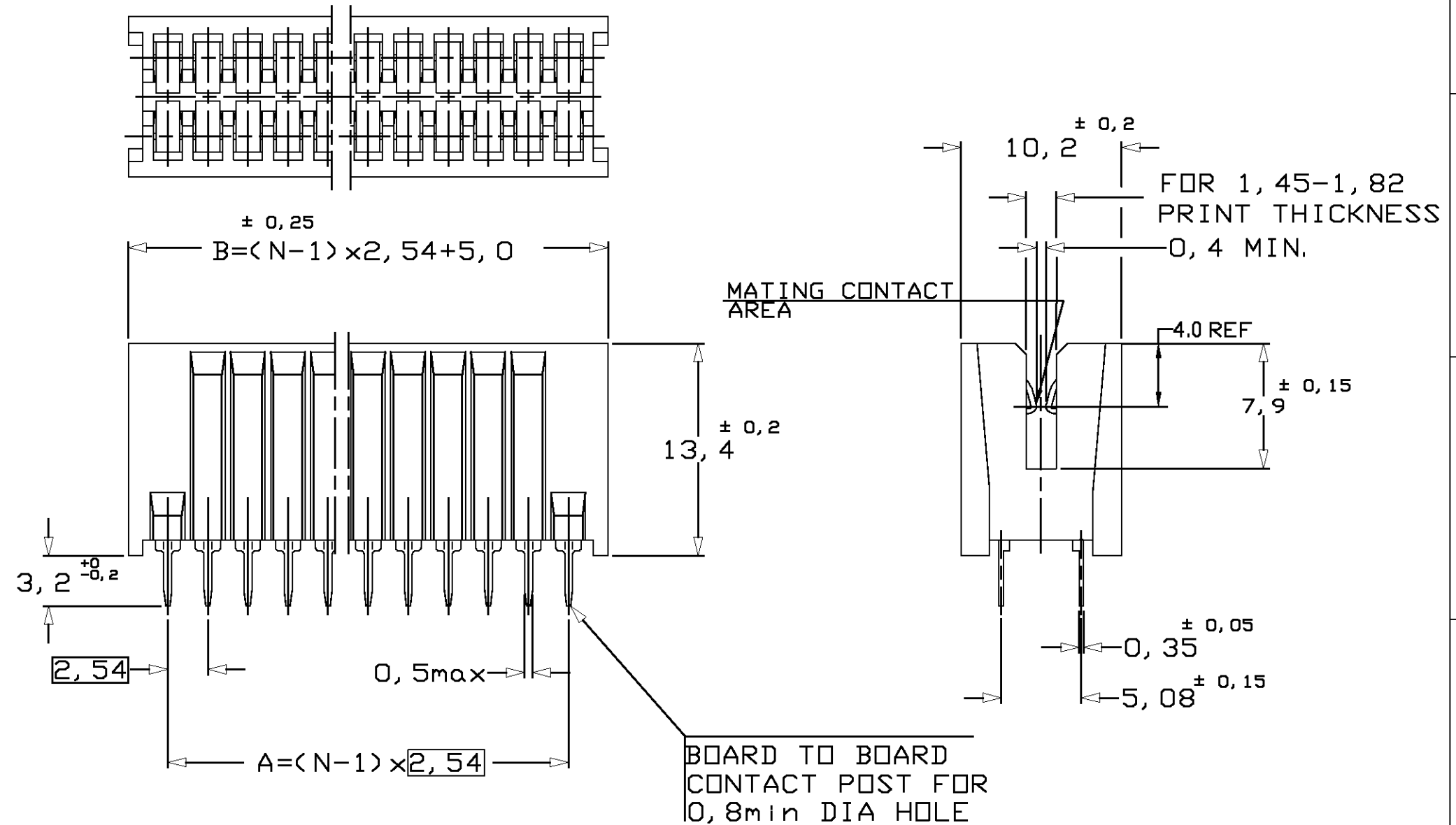


DO NOT SCALE
DIMENSIONS IN mm

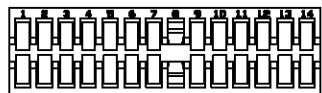
METRIC

THIRD ANGLE
PROJECTION



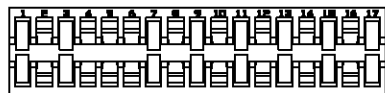
NOTES:

1. TYCO P/N:
14 POSITIONS = 0-338030-1
17 POSITIONS = 0-338030-2
2. FOR CALCULATING DIMENSIONS
TAKE N=NUMBER OF POSITIONS
FOR EXAMPLE: 14 POSITIONS
 $B = (14-1) \times 2,54 + 5,0 = 38,0$
3. - LOADING CONFIGURATION 0-338030-1:



ALL POSITIONS ARE LOADED EXCEPT POSITION 8.

- LOADING CONFIGURATION 0-338030-2:



NO CONTACTS LOADED ON POSITION 2, 4, 5, 6,
8, 10, 12, 14, 16, AND ITS OPPOSITE POSITIONS.

4. MATING CONTACT AREA LUBRICATED WITH LUBRICANT
ELECTROLUBE 2X.
5. PRODUCT SPECIFICATION : 108-19043
6. PACKAGING: ON PLASTIC TUBES, BOXED

CONTACT: TOTAL AREA
3,0µm MIN TIN PLTD OVER
1,25µm MIN NICKEL UNDERLAYER

HOUSING: THERMOPLASTIC
POLYESTER 20% GF, UL94-V0
COLOUR GREEN
CONT.: PH. BRONZE H06

SEE NOTE 1
3

				CUSTOMER DRAWING		FOR REFERENCE ONLY WILL NOT BE UPDATED	
				C COPYRIGHT 19- BY AMP HOLLAND B. V. ALL INTERNATIONAL RIGHTS RESERVED. AMP PRODUCTS MAY BE COVERED BY U. S. AND FOREIGN AND/OR PATENTS PENDING.			
				THIS DRAWING IS UNPUBLISHED RELEASED FOR PUBLICATION , 19			
A2	ET00-0016-04	D. C.	C. T.	09FEB2004	tyco Electronics AMP Italia S.p.A. C.so F.lli Cervi, 15 - Collegno (TO)		
A1	ET00-0115-03	D. C.	C. T.	04JUL2003			
A	ET00-0068-03	P. B	D. C	09-05-03			
0	EH-0527-96	W. S	C. S	24-04-96			
LTR.	REVISION RECORD	DR.	CHK.	DATE	NAME 14 & 17 POS. AMP-EDGE CONN. ASS'Y 2.54 PITCH, DUAL LOADED WITH B. T. B. CONTACTS		
DR.:	W. SOMERS	CHK.:	C. SOUSA	APP.:	C. v. TILBURG	DWG. No.	C-338030
DATE:	24-04-96	DATE:	-	DATE:	-	REV. LTR.	A2
						SHEET	1 OF 1
						A3	

8

7

6

5

4

3

2

1