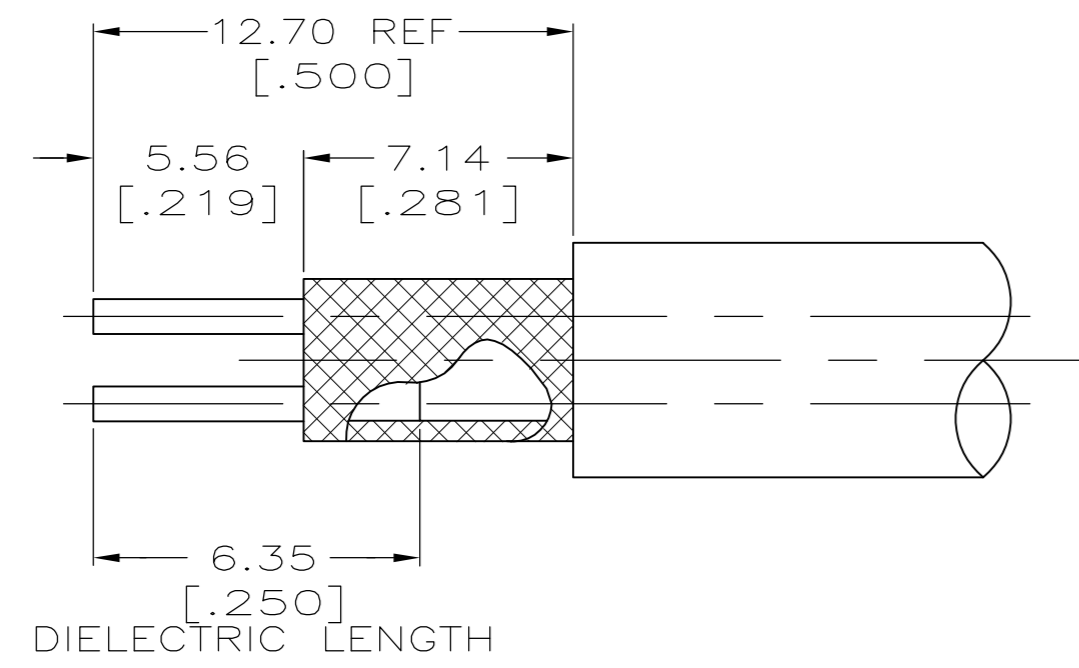


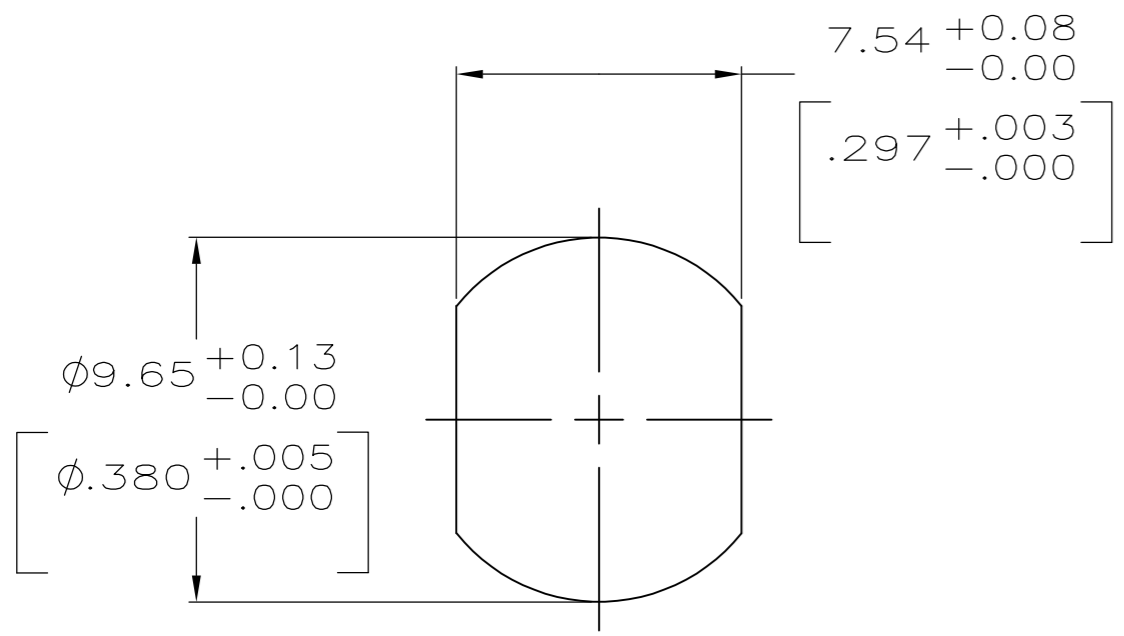
THIS DRAWING IS UNPUBLISHED. RELEASED FOR PUBLICATION
 © COPYRIGHT - By - ALL RIGHTS RESERVED.

REVISIONS					
P	LTR	DESCRIPTION	DATE	DWN	APVD
N2		REVISED PER ECO-15-013169	18NOV2015	RZ	RS

- 1. PARTS PACKAGED UNASSEMBLED
- △ 6.35 [.250] MAXIMUM PANEL THICKNESS
- 3. CRIMP TOOL: 69311-1
- 4. SEE I.S. 1833

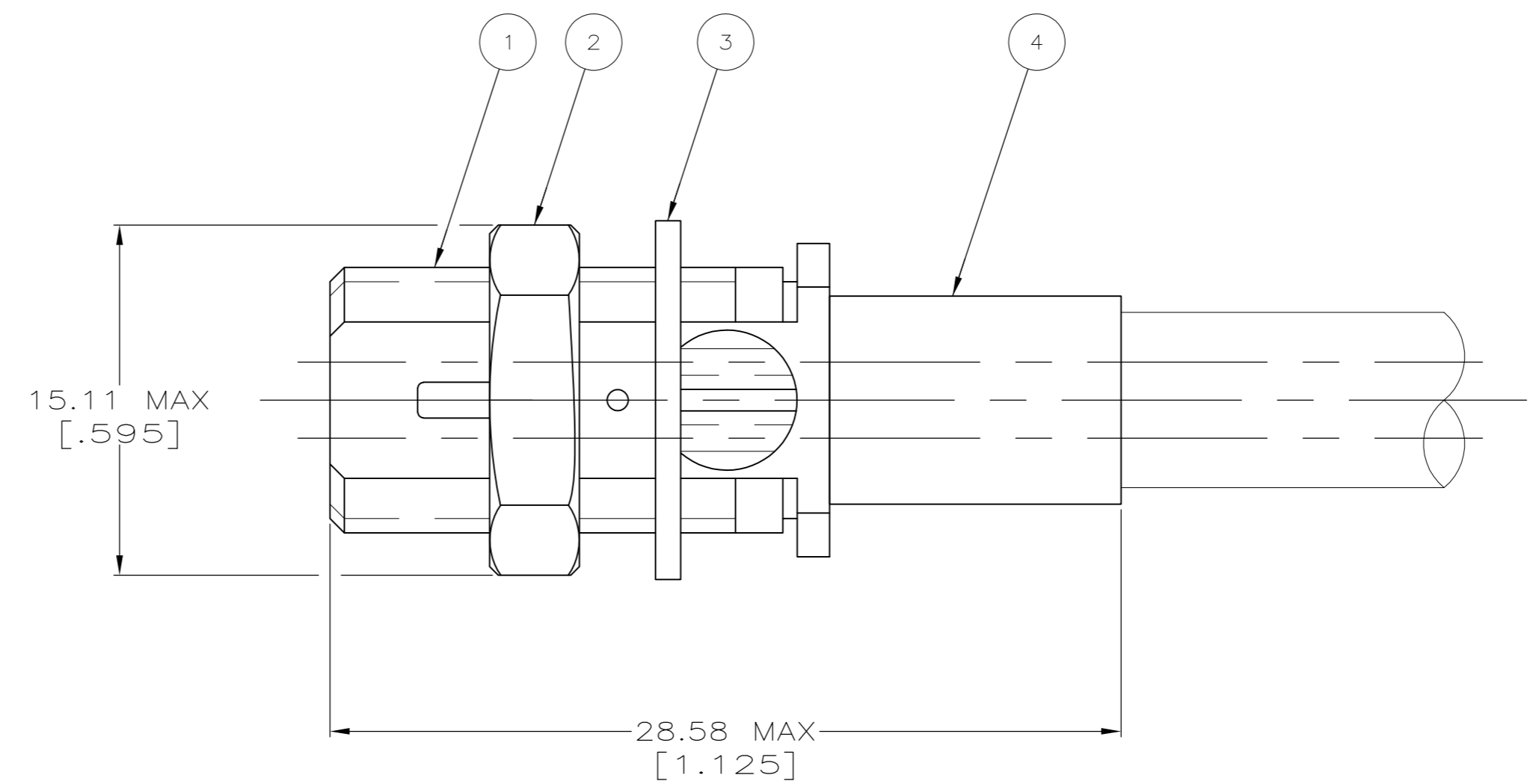


RECOMMENDED STRIP LENGTH



△ RECOMMENDED PANEL CUTOUT

SUPERSEDED BY 2-329941-3



BELDEN 8451,8641 AND 8761	9-329056-0	9-329492-0	9-330249-0	330245	7-329941-3
BELDEN 8451,8641,8737 & 8761	329056	9-329492-0	9-330249-0	2-330245-5	2-329941-4
BELDEN 8451,8641 AND 8761	329056	9-329492-0	9-330249-0	330245	2-329941-3
BELDEN 8737	329960	9-329492-0	9-330249-0	330245	2-329941-1
CABLE SIZE	④ FERRULE QTY=1	③ LOCKWASHER QTY=1	② NUT QTY=1	① RECEPTACLE ASSEMBLY QTY=1	PART NUMBER

THIS DRAWING IS A CONTROLLED DOCUMENT.		DWN B. SCOTT 06-26-91	TE TE Connectivity	
DIMENSIONS: INCHES		CHK G. MICHAEL 02/05/93		
TOLERANCES UNLESS OTHERWISE SPECIFIED:		APVD G. MICHAEL 02/05/93	NAME RECEPTACLE, THREADED, TWIN SERIES	
0 PLC ± -	1 PLC ± -	PRODUCT SPEC	SIZE A2	CAGE CODE 00779
2 PLC ± 0.41 [.016]	3 PLC ± -	APPLICATION SPEC	DRAWING NO C=329941	RESTRICTED TO
4 PLC ± -	ANGLES ± -	WEIGHT	SCALE 5:1	SHEET 1 of 1
MATERIAL	FINISH	CUSTOMER DRAWING	REV N2	