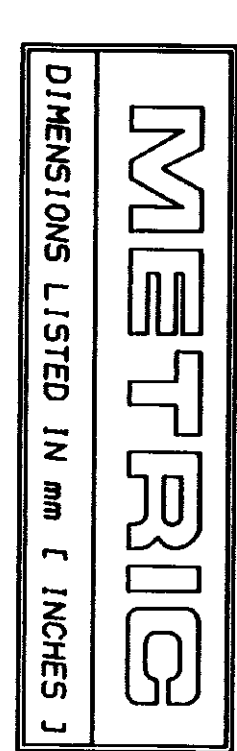


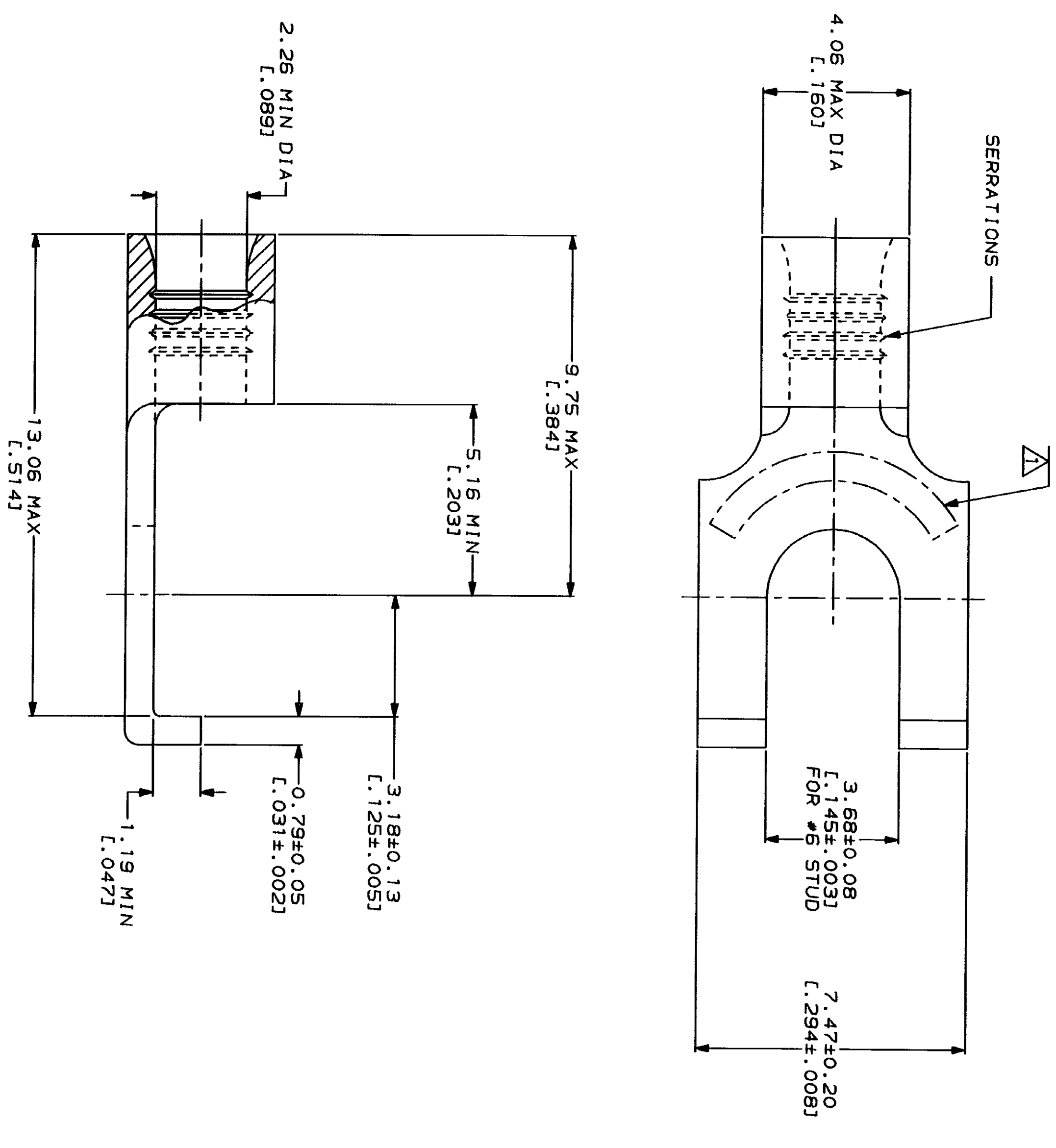
THIS DRAWING IS UNPUBLISHED. COPYRIGHT IS RESERVED FOR AMP INCORPORATED. ALL INTERNATIONAL RIGHTS RESERVED.

LOC	DIST	REV	ZONE	LTR	DESCRIPTION	DATE	APP
G	14		A		REVISED PER 0720-0230-93	2/28/93	AMP



WIRE RANGE 16-14 AWG STRANDED	UL E13288 Listed
LR7189 Certified	MILITARY P/N AND CLASS
NOT CERTIFIED	NOT APPLICABLE

△ STAMP AMP 16-14* APPROX AS SHOWN



AMP INCORPORATED
CUSTOMER SERVICE SYSTEMS

FOR ADDITIONAL PRODUCT INFORMATION OR COPIES OF DRAWINGS AND TECHNICAL DOCUMENTS	PRODUCT INFORMATION CENTER 1-800-522-6752
FOR APPLICATION TOOLING INFORMATION	TOOLING ASSISTANCE CENTER 1-800-722-1111
FOR ORDER ENTRY	1-800-526-5142

MAX RECOMMENDED OPERATING
TEMPERATURE:
170°C MAX

VOLTAGE RATING:
NOT APPLICABLE

WIRE CROSS SECTIONAL AREA RANGE:
1.04-2.62mm² [2,050-5,180] CIR MILS
STRANDED

THIS DRAWING IS A CONTROLLED DOCUMENT FOR
AND THE CONTROLLING ORGANIZATION
SHOULD BE CONTACTED FOR THE LATEST REVISION.

DO NOT SCALE PRINT.
UNLESS SPECIFIED
DIMENSIONS IN MILLIMETERS
TOLERANCES ON:
2 PLC DEC ± .05
3 PLC DEC ± .02

MATERIAL
COPPER PER
ASTM B-152
ANNEALED

FINISH
TIN PLATE
0.00254 [L.000100] MIN
THK PER MIL-T-10727

DR 3-3-93 TA BRINKMAN
CHK 3-3-93 DA PATTERSON
APPD 3-3-93 DE MILLER
APPD 3-3-93 JL HECKLEY
PRODUCT SPEC

APPLICATION SPEC

WEIGHT

AMP
AMP Incorporated
Horshurstburg, PA 17105-3608

TERMINAL, FLANGED
SPADE, BUDGET

320852
PART NO

320852

28-FEB-94 10:54:54 AMP26453 //filee/dept123/dwg123/yu.bodice/yu.16-14

CUSTOMER DRAWING