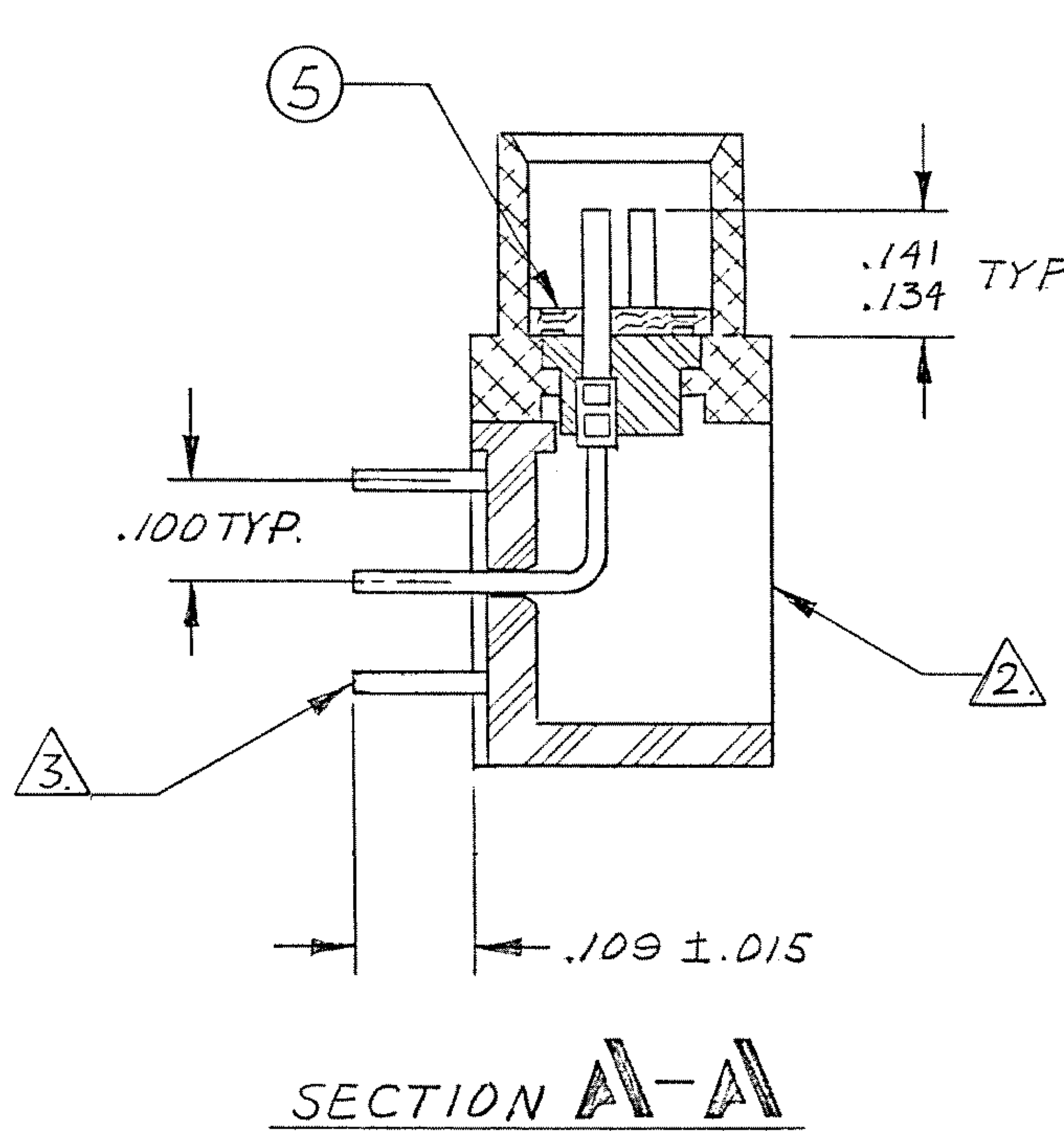
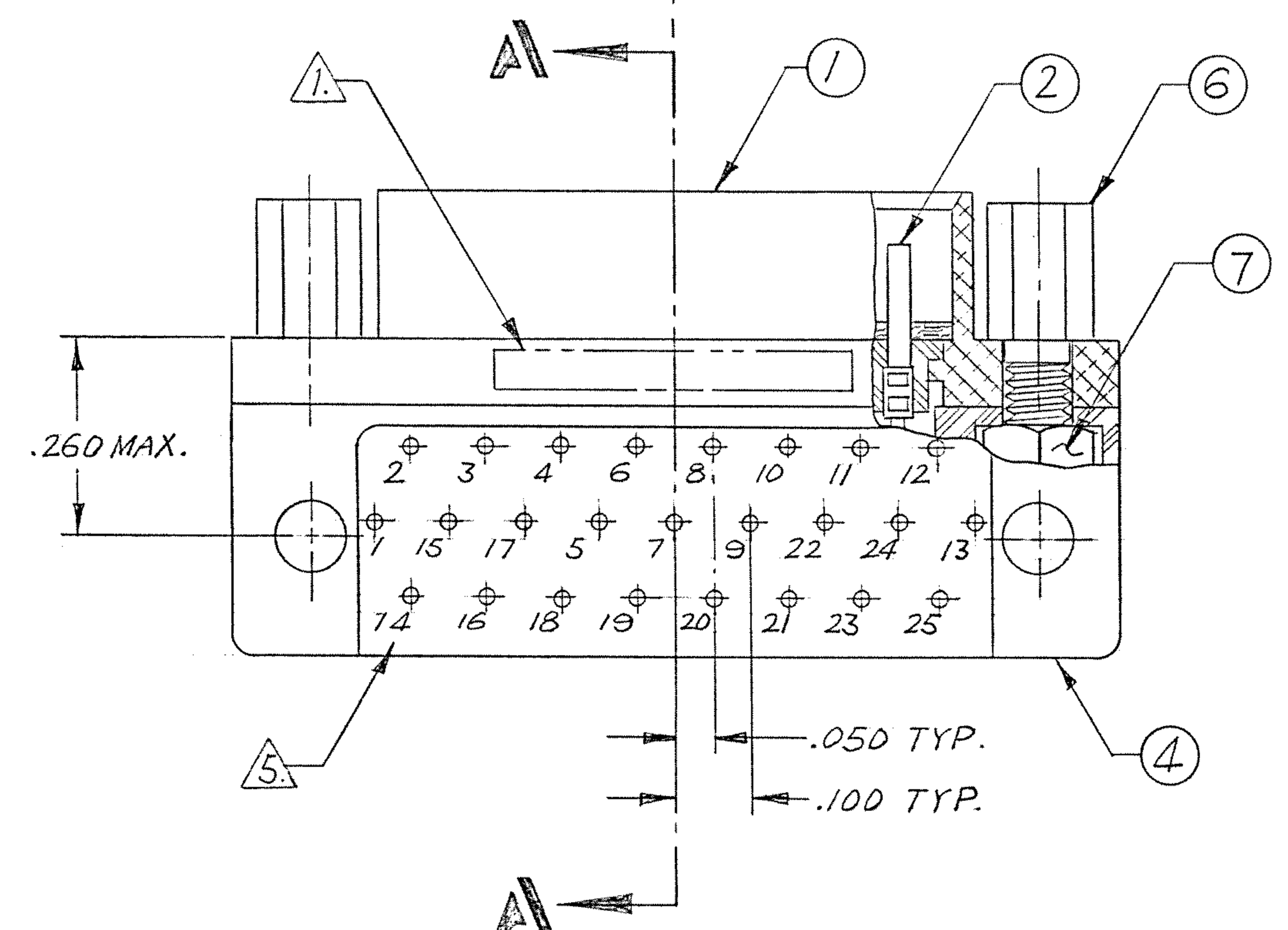
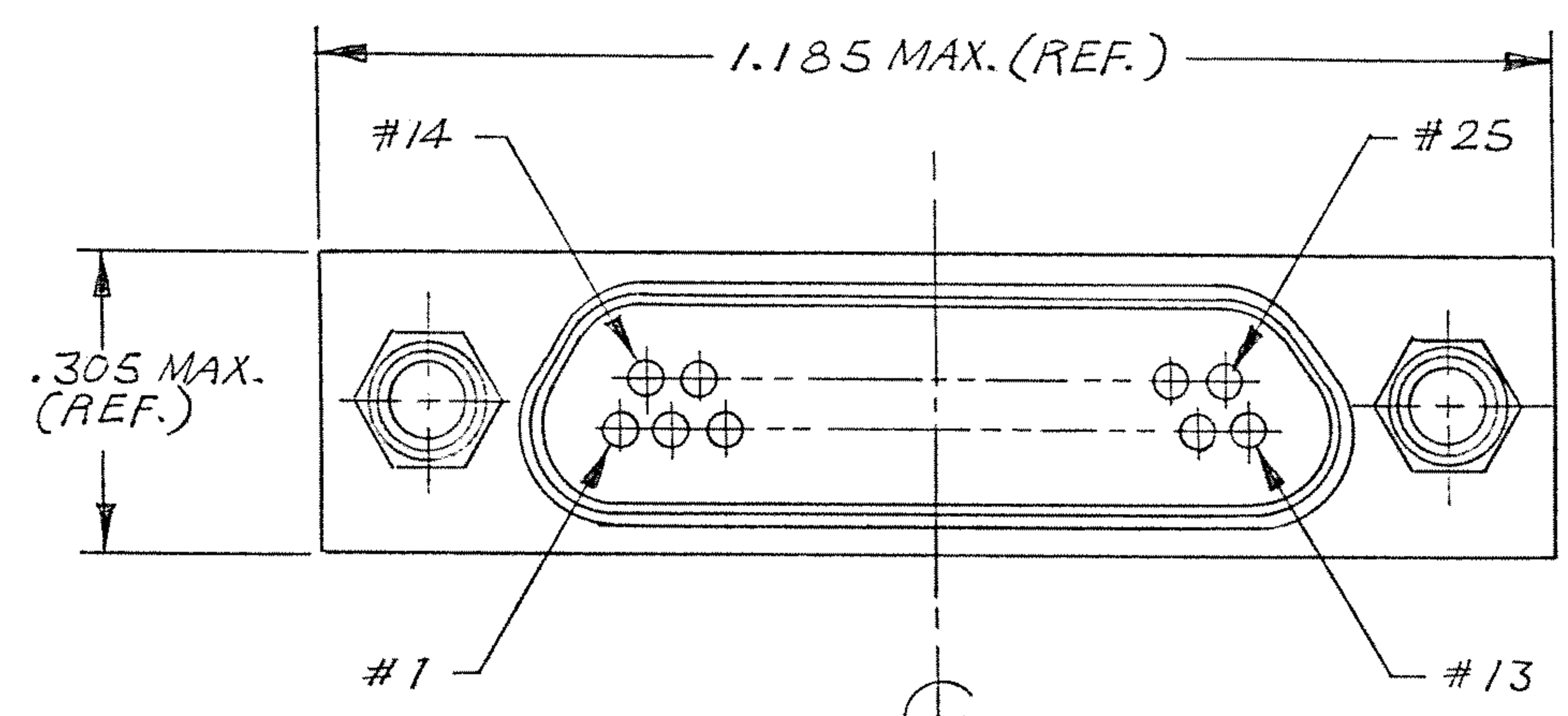


REVISIONS					
ZONE	LTR	DESCRIPTION	DATE	ENG	APPROVED
	B1	Update Per ECO-11-016360	8/10/11	PJS	CEP



NOTES : UNLESS OTHERWISE SPECIFIED.

1. MARK "MALCO" OR MALCO LOGO, MILITARY PART NO., CODE IDENT NO. & DATE CODE WITH .047 MIN. HIGH CHARACTERS IN APPROX. LOCATION SHOWN.
2. ASSEMBLE ALL ITEMS (ITEM #1 THRU #7), THEN FILL WITH EPOXY AROUND HEX NUT & T.B. BLOCK BACKPOTTING AS SHOWN. USE HYSOL #4215 & #3561.
3. TERMINAL WIRES TO BE SOLDER COATED .003 MAX. (PER SIDE) IN LOCATION SHOWN. SOLDER TO BE QQ-S-571, TYPE S₂ 63, FLUX PER MIL-F-14256, TYPE A.
4. CRIMP LEADS INTO CONTACTS PER MEP 302-05.
5. TERMINAL IDENT NOS AS SHOWN (VIEWED FROM THE MOUNTING SURFACE) DO NOT ACTUALLY APPEAR ON THE PART (FOR IDENTIFICATION ONLY).

NEXT ASSY	USED ON
APPLICATION	

QTY REQD	CODE IDENT	PART OR IDENTIFYING NO.	NOMENCLATURE OR DESCRIPTION
PARTS LIST			
UNLESS OTHERWISE SPECIFIED DIMENSIONS ARE IN INCHES TOLERANCES ARE: FRACTIONS DECIMALS ANGLES ± .XX ± ± .XXX ± .005		CONTRACT NO.	 METAL SHELL 90° LO-PROFILE CONNECTOR (MIL-C-83513) MCK-**-P-25SRT1 W/ JACKPOST 094-4406-7000
MATERIAL		APPROVALS	
FINISH		DATE	
NEXT ASSY		DATE	
USED ON		PR. ENG.	PROD. CODE
APPLICATION		APPD.	CODE
DO NOT SCALE DRAWING		<small>These drawings and specifications are the property of Microdot Inc., are issued in strict confidence and shall not be divulged, be reproduced or copied, or used as the basis for the manufacture or sale of any article without written permission of Microdot Inc.</small>	
		SIZE	PROD. CODE
		CODE IDENT NO.	845
		DRAWING NO.	M
		C	
		98278	
		3-1532133-5	
		SCALE	
		SHEET / OF /	