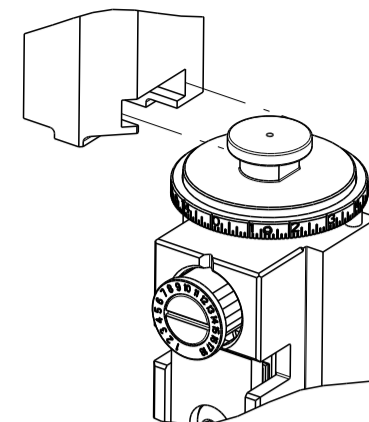


8	7	6	5	4	3	2	1
THIS DRAWING IS UNPUBLISHED.		RELEASED FOR PUBLICATION		2017			
COPYRIGHT 2017 BY TYCO ELECTRONICS CORPORATION. ALL RIGHTS RESERVED.							
PART NUMBER	REVISION	DESCRIPTION	FEED TYPE				
2836641-2	D	FINE CRIMP HEIGHT ADJUST	PNEUMATIC				
7-2836641-2	D	PNEUMATIC AND CRIMP TOOLING KIT	PNEUMATIC				
7-2836641-7	A	CRIMP TOOLING KIT	-				

ATLANTIC VERSION TERMINATOR INTERFACE ADAPTER



APPLICATOR DATA		
CRIMP	SIZE	TYPE
WIRE	5.08 mm [.200]	F
INSUL	6.99 mm [.275]	O
APPLICATOR INSTRUCTIONS 408-35042		

TERMINAL DATA: DELPHI PACKARD TERMINAL		DELPHI CRIMP SPECIFICATION	
TERMINAL NAME: TAXI ASM TERMINAL METRI PACK 800			
WIRE STRIP LENGTH		TERMINAL INSULATION DIAMETER RANGE	
8.41-9.17 mm [.331-.361 IN]		Ø3.70-4.07 mm [.146-.160 IN]	
TERMINAL APPLICATION SPECIFICATION		CRIMP INFORMATION SHEET Rev PAGE 1 of 6	-

TERMINALS APPLIED				SEAL INSULATION DIAMETER RANGE
TE TERMINAL	DELPHI PACKARD TERMINAL	TE SEAL	DELPHI PACKARD SEAL	
1949815-1	15336748	2303726-1	15324999	Ø3.60-4.50 mm [.142-.177 IN]

WIRE SIZE	CRIMP HEIGHT mm [INCH]	CRIMP HEIGHT REFERENCE SETTING
5.00mm2	2.60 +/- 0.05 [.102 +/- .002]	7.1



- 1 RECOMMENDED SPARE PARTS
- 2 REFER TO SUPPLIED INSTRUCTION SHEET FOR CLEANING, LUBRICATION AND STORAGE OF APPLICATOR.
- 3 APPLY PART NUMBER 2-23419-6 LOCTITE TO THREADS OF ITEM 242.
- 4 CRIMP HEIGHT REFERENCE SETTING WAS THE SETTING USED WHEN THE APPLICATOR WAS QUALIFIED AT THE FACTORY. ADJUSTMENT MAY BE NECESSARY WHEN RUNNING APPLICATOR IN THE FIELD.
- 5 TERMINAL LUBRICANT IS RECOMMENDED.
- 6. UNLESS SPECIFIED OTHERWISE TORQUE VALUES SHALL BE USED PER DOCUMENT, 101-35000.
- 7 APPLY TORO-SEAL IN ALLEN SOCKET TO FILL HOLE AFTER SOCKET HD HAS BEEN ADJUSTED TO CORRECT HEIGHT AT QUALIFICATION. APPLY #1-23419-5 LOC-TITE TO THREADS.
- 8 CUT TO LENGTH AT ASSEMBLY.
- 9 TERMINAL PITCH NOT COMPATIBLE WITH MECHANICAL FEED.

**\*WARNING**  
ON INSTALLATION, SET WIRE DISC TO CRIMP HEIGHT REFERENCE SETTING FOR LARGEST WIRE SIZE. CRIMP HEIGHT REFERENCE SETTINGS GREATER THAN THE VALUE SHOWN MAY CAUSE DAMAGE TO THE CRIMP TOOLING. REFER TO THE INSTRUCTION SHEET FOR PROPER SETUP AND ADJUSTMENTS.

LOC	DIST	REVISIONS					
A	66	P	LTN	DESCRIPTION	DATE	DWN	APVD
		A		RELEASED	10NOV2017	JAH	TE
		B		ECR-17-016706	13NOV2017	JAH	TE
		C		ECR-19-007602	14MAY2019	TB	CT
		D		ECR-22-150229	23AUG2022	LG	RK

-	2	2	2-2168083-7	SCR, SKT HD CAP, RoHS, M3 X 20	284	
-	1	1	7-18023-7	SCR, SKT HD CAP M3 X 4.0	283	
1	-	1	2280441-1	INSERT, SHEAR	282	
-	1	1	1803078-3	SPACER, PRECISION	259	
-	1	1	2119641-1	FEED CAM, AIR FEED	248	
-	1	1	2119082-1	CAM, SNAIL, INSULATION ADJUSTMENT	244	
-	1	1	2079764-1	WASHER, WAVE SPRING, CREST-TO-CREST	243	
3	-	1	2119083-1	RETAINER, INSULATION DIAL	242	
-	1	1	2844940-2	AIR FEED MODULE	238	
-	1	1	1-356885-0	STOP, SHEAR	237	
-	REF	REF	994970-2	COUNTER, MAGNETIC	164	
-	1	1	22281-8	SPRING, COMPRESSION	121	
5	-	1	2119955-1	ASSY, LUBRICATOR, SIDE FEED	113	
-	1	1	2844908-1	SCREW, LOCKING	99	
-	1	1	2844907-1	POST, LOCKING	98	
-	1	1	1803647-1	SPECIAL, REAR STRIP GUIDE	96	
-	2	2	2168083-1	SCR, SKT HD CAP, RoHS, M3 X 8.0	95	
-	1	1	2168083-6	SCR, SKT HD CAP, RoHS, M5 X 65	93	
-	1	1	1-455888-2	SPACER, CRIMPER	82	
-	1	1	7-240641-4	SPACER	81	
-	1	1	1803607-3	DOCUMENTATION PACKAGE	71	
-	1	1	2119791-6	DEPRESSOR, WIRE	70	
-	1	1	2119943-1	WASHER, SPACER	69	
-	1	1	2119740-1	TAG, IDENTIFICATION	67	
-	2	2	2168078-1	SCREW, DRIVE, RH, RoHS, 2 x .188	66	
-	2	2	2-18032-5	SCR, SET, FLT PNT, M5 X 20.0	61	
-	1	1	2168083-2	SCR, SKT HD CAP, RoHS, M4 X 8.0	60	
-	1	1	5-18022-5	SCR, HEX HD CAP, M4 X 6.0	59	
-	1	1	2168083-1	SCR, SKT HD CAP, RoHS, M3 X 8.0	57	
-	1	1	224716-6	PAWL, FEED	56	
-	2	2	2168083-3	SCR, SKT HD CAP, RoHS, M4 X 12.0	54	
-	2	2	2168083-9	SCR, SKT HD CAP, RoHS, M4 X 20	53	
-	1	1	18023-9	SCR, SKT HD CAP M4 X 6.0	49	
-	1	1	1-1803583-7	APPLICATOR BASIC ASSEMBLY, SF	46	
-	1	1	1803515-2	RAM ASSEMBLY, SF ATLANTIC	44	
-	1	1	1803602-2	SCR, BHSC, RoHS (M8 X 40)	41	
-	1	1	2-2305692-9	PLATE, REAR STRIP GUIDE	29	
-	1	1	455888-5	SPACER, CRIMPER	28	
-	2	2	22283-1	SPRING, COMPRESSION	27	
-	1	1	356835-1	LEVER, DRAG RELEASE	26	
-	1	1	1803648-1	DRAG, SPECIAL	25	
-	1	1	4-189124-6	GUIDE, FRONT STRIP	24	
-	1	1	980371-4	SCR, SKT HD SHLDR 5.0 DIA X 6.0	23	
-	1	1	2168083-2	SCR, SKT HD CAP, RoHS, M4 X 8.0	21	
-	2	2	1-18028-2	WASHER, FLAT, REG M4	20	
-	1	1	690472-4	STRIPPER	19	
1	-	1	1-690463-4	FLOATING SHEAR, REAR	17	
8	-	2	1-2168083-1	SCR, SKT HD CAP, RoHS, M3 X 6	16	
1	-	1	690464-4	SHEAR PLATE, REAR	15	
-	1	1	2119862-3	SHEAR HOLDER, REAR	14	
-	1	1	3-22280-3	SPRING, COMPRESSION	12	
-	-	-	-	-	10	
-	-	-	-	-	9	
1	1	2	1	8-1633930-0	ANVIL, COMBINATION	8
-	-	-	-	-	7	
-	1	1	1	2-690468-5	DEPRESSOR SHEAR, REAR	6
-	1	1	1	1803203-3	BLOCK, FRONT DEPRESSOR	5
-	1	1	1	7-238011-0	BLOCK, CRIMPER SPACER	4
1	1	2	1	1-1803365-8	CRIMPER, INSULATION O	3
-	1	1	1	1-455888-1	SPACER, CRIMPER	2
1	1	2	1	8-1803241-8	CRIMPER, WIRE F	1

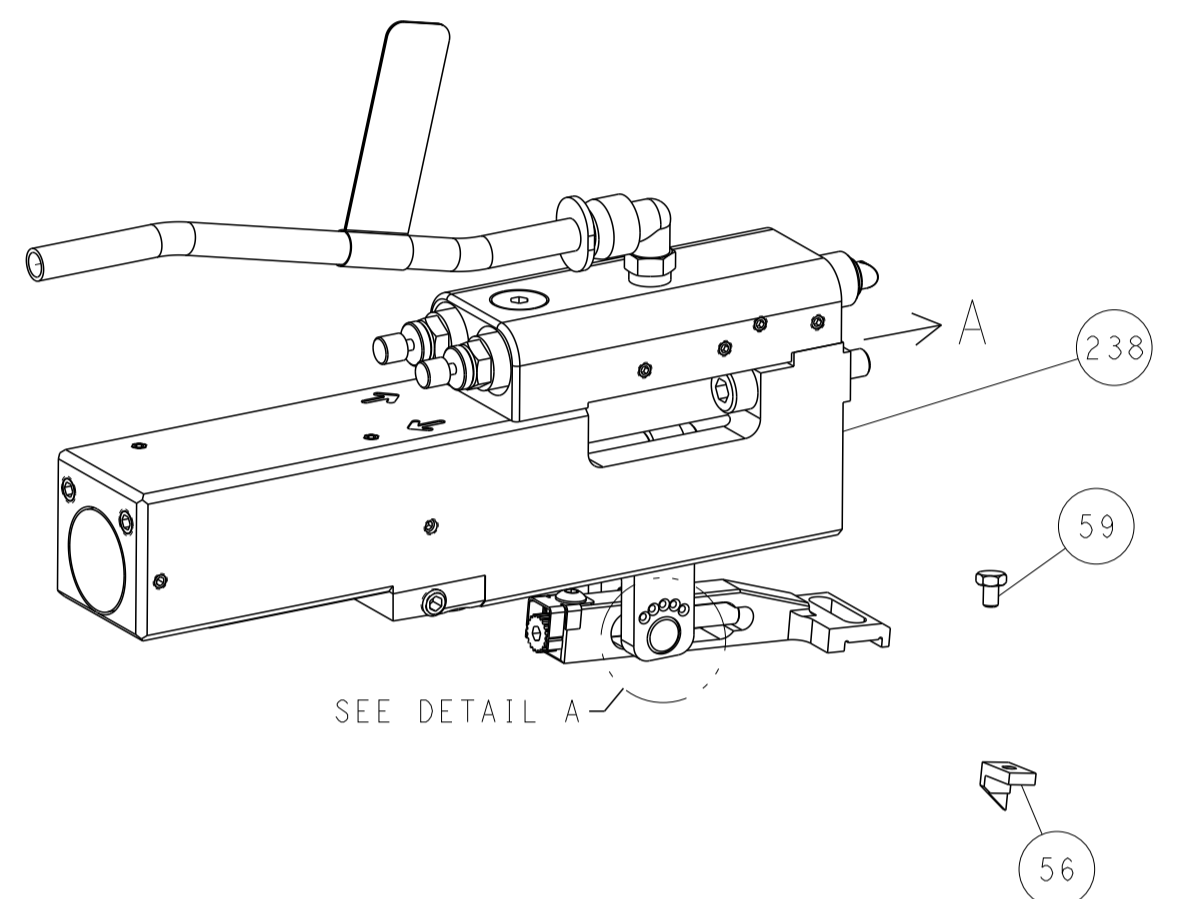
ATLANTIC VERSION  
Shown on sheets 1 of 4 & 2 of 4  
(Pacific version shown on sheets 3 of 4 & 4 of 4)

DIMENSIONS:		TOLERANCES UNLESS OTHERWISE SPECIFIED:		OWN: D. WEAVER 08MAR2017		TE Connectivity	
mm		0 PLC ±		CHK: T. ELBIN 08MAR2017		Harrisburg, PA 17105-3608	
		1 PLC ±		APVD: T. ELBIN 08MAR2017		NAME: Ocean Side Feed Applicator	
		2 PLC ±		PRODUCT SPEC		SIZE: CAGE CODE: DRAWING NO: RESTRICTED TO	
		3 PLC ±		APPLICATION SPEC		A1 00779 C=2836641	
		4 PLC ±		WEIGHT		SCALE: 1:2 SHEET 1 OF 4 REV D	
MATERIAL:		FINISH:		Customer Accessible Production Drawing			

LOC	DIST	REVISIONS					
		P	LTN	DESCRIPTION	DATE	DMN	APVD
A	66	-	-	SEE SHEET 1	-	-	-

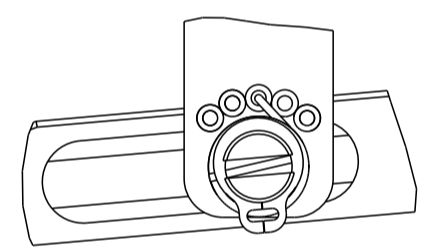
# FEED TYPE

## PNEUMATIC



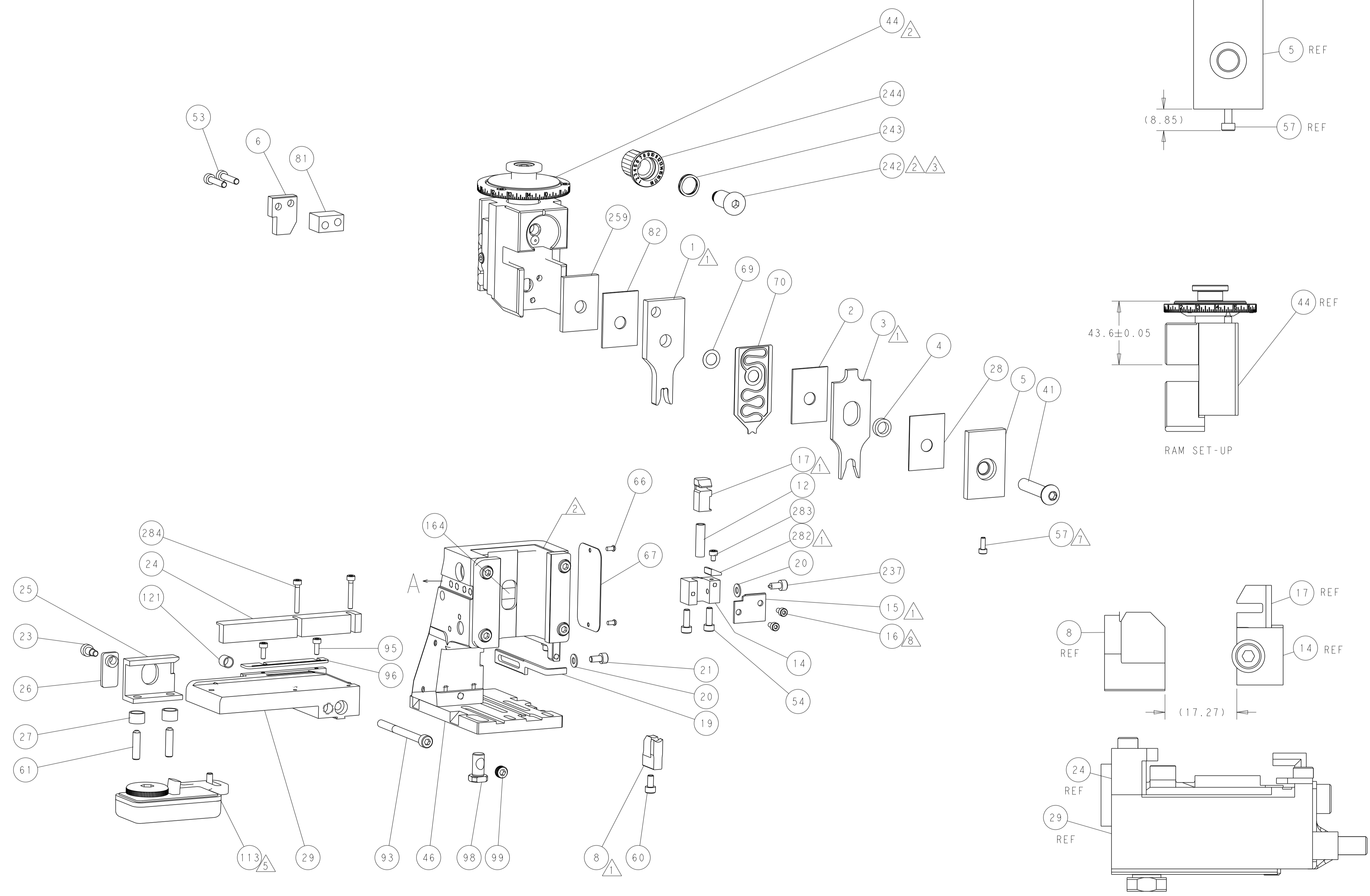
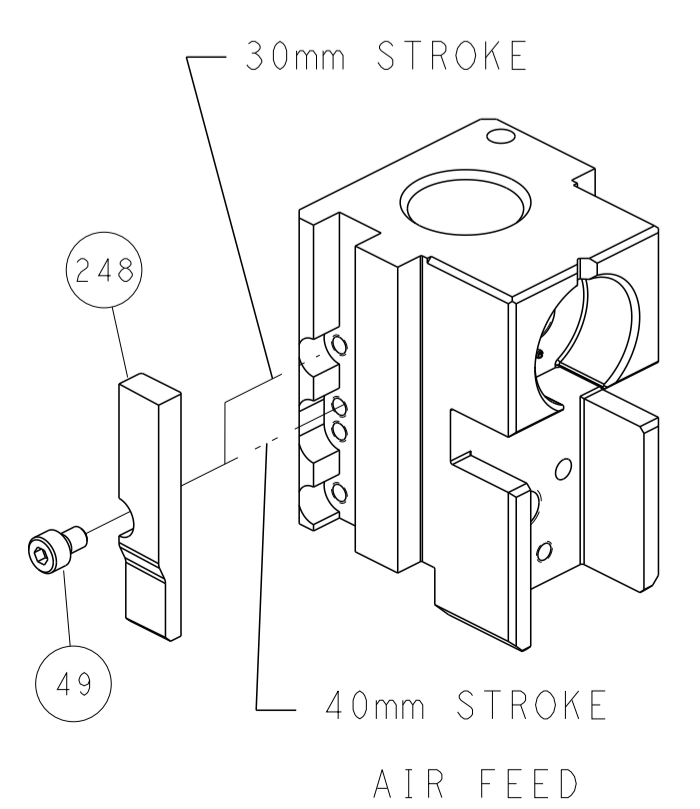
SEE DETAIL A

## FEED SPRING SETTING POSITION (SHOWN FROM REAR SIDE)



DETAIL A

## CAM POSITION



43.6 ± 0.05

RAM SET-UP

FEED TRACK POSITION GUIDE BY INSULATION BARREL

**ATLANTIC VERSION**  
 Shown on sheets 1 of 4 & 2 of 4  
 (Pacific version shown on sheets 3 of 4 & 4 of 4)

<small>THIS DRAWING IS UNPUBLISHED. RELEASED FOR PUBLICATION 2017. ALL RIGHTS RESERVED. THIS DRAWING IS THE PROPERTY OF TYCO ELECTRONICS CORPORATION. IT IS TO BE USED ONLY FOR THE PURPOSES SPECIFIED AND IS NOT TO BE REPRODUCED OR TRANSMITTED IN ANY FORM OR BY ANY MEANS, ELECTRONIC OR MECHANICAL, INCLUDING PHOTOCOPYING, RECORDING, OR BY ANY INFORMATION STORAGE AND RETRIEVAL SYSTEM, WITHOUT THE WRITTEN PERMISSION OF TYCO ELECTRONICS CORPORATION.</small>		DWN: B. WEAVER 08MAR2017 CHK: T. ELBIN 08MAR2017 APVD: T. ELBIN 08MAR2017	TE Connectivity Harrisburg, PA 17105-3608
DIMENSIONS: mm TOLERANCES UNLESS OTHERWISE SPECIFIED: 0 PLC ± 1 PLC ± 2 PLC ± 3 PLC ± 4 PLC ± ANGLES ± MATERIAL: - FINISH: -		NAME: Ocean Side Feed Applicator SIZE: A1 CAGE CODE: 00779 DRAWING NO: C=2836641 WEIGHT: - SCALE: 1:2 SHEET: 2 of 4 REV: D	RESTRICTED TO: -
Customer Accessible Production Drawing			



