

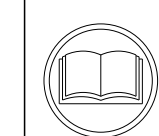
ATLANTIC VERSION TERMINATOR INTERFACE ADAPTER	PART NUMBER	REVISION	DESCRIPTION	FEED TYPE	APPLICATOR STYLE CONVERSION CHART						
					CONVERT TO	PART NUMBERS REQUIRED					
	2836609-2	A	FINE CRIMP HEIGHT ADJUST	PNEUMATIC	-	-	-	-	-	-	
	2836609-5	A	FINE CRIMP HEIGHT ADJUST	SERVO LATCH PLATE Δ 4	SERVO LATCH PLATE	2119951-1	-	8-2836609-5	1901094-3	-	2168400-6 (QUANTITY 2)
					SMART APPLICATOR	2161326-1	-	8-2836609-4	-	-	
	2836609-6	A	NON-CRIMP HEIGHT ADJUST	SERVO LATCH PLATE Δ 11	-	-	-	-	-	-	
	2836609-7	A	FINE CRIMP HEIGHT ADJUST	NONE	-	-	-	-	-	-	
7-2836609-7	A	CRIMP TOOLING KIT	-	-	-	-	-	-	-		

APPLICATOR DATA		
CRIMP SIZE	TYPE	
WIRE 3.38 mm [.133]	F	
INSUL 5.69 mm [.224]	F	

APPLICATOR INSTRUCTIONS 408-10389

TERMINAL DATA: DELPHI TERMINAL DELPHI CRIMP SPECIFICATION	
TERMINAL NAME: F 56 TAXI TERMINAL	
WIRE STRIP LENGTH 4.30-5.06 mm [.169-.199 IN]	INSULATION DIAMETER RANGE \varnothing 3.36-3.97 mm [.132-.156 IN]
TERMINAL APPLICATION SPECIFICATION Crimp Information Sheet Rev 2013-10-29	
TERMINALS APPLIED Δ 0, Δ 12	
TE TERMINAL 2303712-1	DELPHI TERMINAL 02965511

WIRE SIZE	CRIMP HEIGHT mm [INCH]	CRIMP HEIGHT REFERENCE SETTING
0.5+0.8mm ²	1.75+/-0.05 [.069+/- .002]	8.5



- Δ RECOMMENDED SPARE PARTS
- Δ GREASE BEARING SURFACES LIGHTLY
- 3. LUBRICATE DAILY PER THE APPLICATOR INSTRUCTION SHEET SUPPLIED WITH THE APPLICATOR.
- Δ APPLICATOR SPECIFIC DATA TO BE ENTERED INTO BLANK MEMORY CHIP AT ASSEMBLY. SEE BELOW FOR PART NUMBER:
 PNEUMATIC FEED WITH "SMART APPLICATOR" CONVERSION: 8-2836609-4
 SERVO FEED WITH "FINE CRIMP HEIGHT ADJUST": 8-2836609-5
 SERVO FEED WITH "NON-CRIMP HEIGHT ADJUST": 8-2836609-6
- 5. ADJUSTMENT OF THE STRIPPER MAY BE REQUIRED WHEN MOVING THE APPLICATOR BETWEEN BENCH AND LEADMAKER APPLICATIONS.
- Δ APPLY PART NUMBER 1-23419-5 LOCTITE TO THREADS OF ITEM 62. APPLY PART NUMBER 2-23419-6 LOCTITE TO THREADS OF ITEM 242. FOR -6 ONLY APPLY PART NUMBER 1-23419-5 LOCTITE TO THREADS OF ITEM 37.
- Δ GREASE THREADS, GROOVE AND O-RING ON ITEMS 35 & 252.
- Δ MAGNET, ITEM 166 MUST BE ORIENTED CORRECTLY IN ORDER TO PROPERLY ACTUATE THE COUNTER.
- Δ CRIMP HEIGHT REFERENCE SETTING WAS THE SETTING USED WHEN THE APPLICATOR WAS QUALIFIED AT THE FACTORY. ADJUSTMENT MAY BE NECESSARY WHEN RUNNING APPLICATOR IN THE FIELD.
- Δ TERMINAL PITCH NOT COMPATIBLE WITH MECHANICAL FEED.
- Δ WHEN ASSEMBLING A NON CRIMP HEIGHT ADJUST APPLICATOR (-6) USE SHIMS FROM ITEM 260 TO ACHIEVE A NOMINAL SHIM HEIGHT OF 4.05.
- Δ TERMINAL LUBRICANT IS RECOMMENDED.

***WARNING**
 ON INSTALLATION, SET WIRE DISC, ITEM 40 TO LARGEST WIRE SIZE SETTING. USE OF SETTINGS BELOW MINIMUM REQUIRED CRIMP HEIGHT SETTING WILL CAUSE DAMAGE TO CRIMP TOOLING.

-77	-7	-6	-5	-2	PART NO	DESCRIPTION	ITEM NO
-	-	1	-	-	2119957-2	APPLICATOR SHIM PACK	260
-	1	-	1	1	8-21084-0	O-RING, .676 ID, .070 DIA. MAT.	252
-	-	-	-	1	2119640-1	PUSH ROD, AIR FEED	250
-	-	-	-	1	1803259-1	BUSHING, FLANGED	249
-	-	-	-	1	2119641-1	FEED CAM, AIR FEED	248

ATLANTIC VERSION
 Shown on sheets 1 of 4 & 2 of 4
 (Pacific version shown on sheets 3 of 4 & 4 of 4)

SET UP GAUGE	LOC	DIST	REVISIONS			
2119599-1	A	66	#	DATE	OWN	APVD
			1	01MAR2017	MEH	TE
			A	18APR2017	MEH	TE

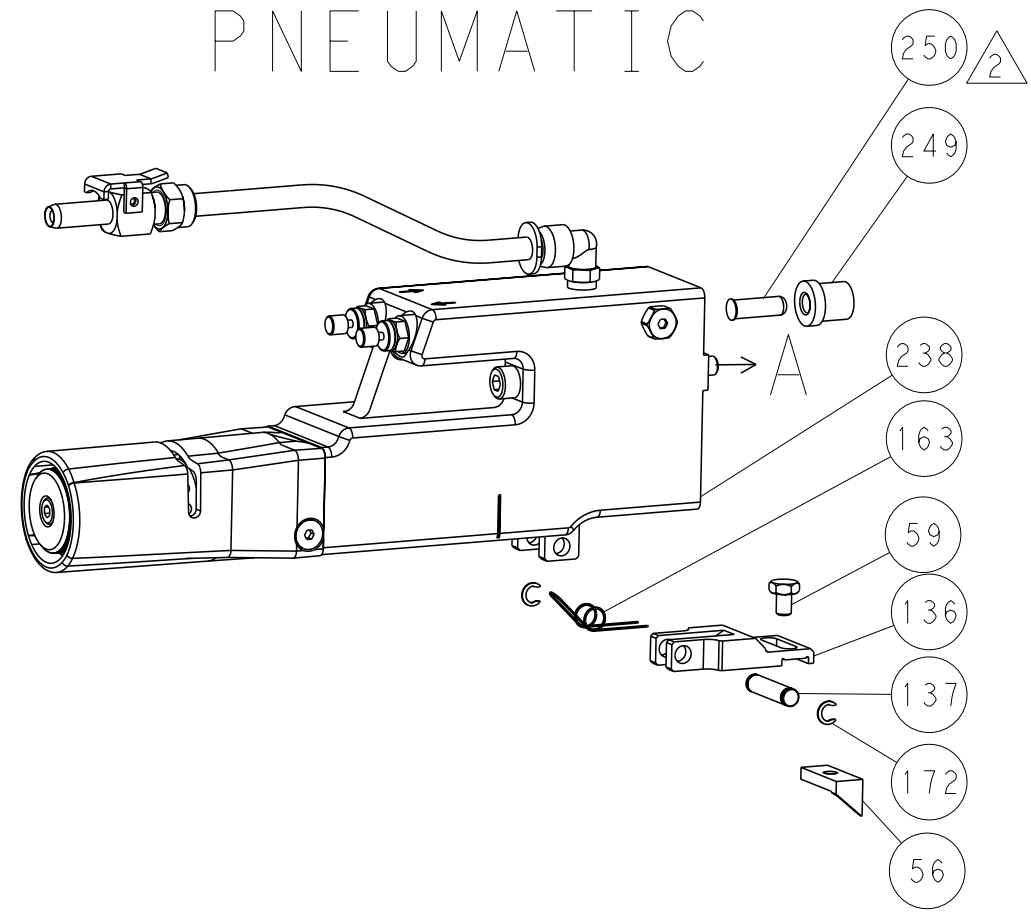
#	QTY	DESCRIPTION	DATE	OWN	APVD		
-	1	1	1	2119798-1	DETENT PIN	247	
-	1	-	1	1-22279-3	SPRING, COMPRESSION	246	
-	-	1	-	2119758-1	RAM, AMP STYLE, SIDE FEED, NON-ADJ.	245	
-	1	1	1	2119082-4	CAM, SNAIL, INSULATION ADJUSTMENT	244	
-	1	1	1	2079764-1	WASHER, WAVE SPRING, CREST-TO-CREST	243	
-	1	1	1	2119083-1	RETAINER, INSULATION DIAL	242	
-	-	2	2	2168400-6	SHCS, LOW HEAD, RoHS, M5 X 16	240	
-	-	-	1	2063440-1	AIR FEED MODULE	238	
-	1	1	1	356885-5	STOP, SHEAR	237	
-	-	1	1	2119740-2	TAG, IDENTIFICATION	213	
-	-	1	1	1901094-3	SPACER, FEEDER	198	
-	-	-	2	21045-3	RING, RETAIN, EXTERN, 3/16 CRESCENT	172	
-	1	1	1	994969-1	MAGNET, RARE EARTH HIGH ENERGY	166	
-	REF	REF	REF	994970-2	COUNTER, MAGNETIC	164	
-	-	-	1	240638-1	SPRING, FEED FINGER	163	
-	-	-	1	3-23627-7	PIN, RETAIN, GRVD, 3/16 X .854	137	
-	-	-	1	2119799-1	HOLDER, FEED FINGER, AF	136	
-	-	REF	REF	-	SEE NOTE 4	135	
-	-	1	1	1633743-1	SERVO FEED LATCH ASM	133	
-	1	1	1	1-22281-8	SPRING, COMPRESSION	121	
-	-	REF	REF	-	FEED FINGER ASSEMBLY, SF	117	
-	1	1	1	2119955-1	ASSY, LUBRICATOR, SIDE FEED	113	
-	1	1	1	1803258-1	FRONT STRIP GUIDE	96	
-	2	2	2	2168083-1	SCR, SKT HD CAP, RoHS, M3 X 8.0	95	
-	1	1	1	2168083-6	SCR, SKT HD CAP, RoHS, M5 X 65	93	
-	2	2	2	1-2168083-3	SCR, SKT HD CAP, RoHS, M3 X 16	85	
-	1	1	1	455888-5	SPACER, CRIMPER	82	
-	1	1	1	6-240641-0	SPACER	81	
-	1	1	1	2119956-1	DOCUMENTATION PACKAGE	71	
-	1	-	-	2119740-1	TAG, IDENTIFICATION	67	
-	2	2	2	2168078-1	SCREW, DRIVE, RH, RoHS, 2 x .188	66	
-	1	-	1	2119793-1	LIMITER, ADJUSTMENT BOLT	63	
-	3	-	3	992763-5	SCR, SET, SOC, CONE POINT, M3 x 4.0	62	
-	2	2	2	2-18032-5	SCR, SET, FLT POINT M5 X 20.0	61	
-	1	1	1	2079383-4	SCR, BHSC, RoHS (M4 X 8)	60	
-	-	-	1	5-18022-5	SCR, HEX HD CAP, M4 X 6.0	59	
-	-	-	-	1338683-1	FEED PAWL	56	
-	2	2	2	2168400-1	SHCS, LOW HEAD, RoHS, M4 X 12	54	
-	2	2	2	2168083-8	SCR, SKT HD CAP, RoHS, M4 X 16	53	
-	-	-	1	18023-9	SCR, SKT HD CAP M4 X 6.0	49	
-	1	1	1	2119656-9	APPLICATOR BASIC ASSEMBLY, SF	46	
-	1	-	1	2119370-1	RAM, AMP STYLE, SIDE FEED	44	
-	1	1	1	2079383-7	SCR, BHSC, RoHS (M8 X 25)	41	
-	1	-	1	2119645-1	DISC, NUMBERED FA WIRE ADJUSTMENT	40	
-	1	-	1	2119957-1	APPLICATOR SHIM PACK	39	
-	1	1	1	2119644-2	RAM WASHER, PRECISION	38	
-	1	1	1	2119085-1	FA HEAD, ATLANTIC STYLE	37	
-	1	-	1	2119092-1	BOLT, ADJUSTMENT	35	
-	1	1	1	2161328-1	HEX HEAD, FLANGED, M5 x 8mm LONG	32	
-	1	1	1	2-1901091-3	PLATE, REAR STRIP GUIDE	29	
-	2	2	2	22281-8	SPRING, COMPRESSION	27	
-	1	1	1	356835-1	LEVER, DRAG RELEASE	26	
-	1	1	1	1673009-1	DRAG, TERMINAL	25	
-	1	1	1	4-189124-2	GUIDE, FRONT STRIP	24	
-	1	1	1	980371-4	SCR, SKT HD SHLDR 5.0 DIA X 6.0	23	
-	1	1	1	2168083-2	SCR, SKT HD CAP, RoHS, M4 X 8.0	21	
-	1	1	1	1-18028-2	WASHER, FLAT, REG M4	20	
-	1	1	1	2119533-2	STRIPPER, SIDE FEED	19	
-	1	1	1	1673257-7	SHEAR, FLOATING	17	
-	2	2	2	1-2168083-1	SCR, SKT HD CAP, RoHS, M3 X 6	16	
-	1	1	1	1673256-6	PLATE, REAR SHEAR	15	
-	1	1	1	1673255-3	HOLDER, REAR SHEAR	14	
-	1	1	1	3-22280-3	SPRING, COMPRESSION	12	
-	-	-	-	-	-	10	
-	-	-	-	-	-	9	
-	1	1	1	1	6-1803252-0	ANVIL, COMBINATION	8
-	-	-	-	-	-	7	
-	-	-	-	-	-	6	
-	1	1	1	1	1-690468-7	DEPRESSOR SHEAR, REAR	5
-	-	-	-	-	-	4	
-	1	1	1	1	2-238009-1	BLOCK, FL CRIMPER SPACER	3
-	1	1	1	1	1-1803384-3	CRIMPER, INSULATION F	2
-	1	1	1	1	455888-9	SPACER, CRIMPER	2
-	1	1	1	1	1803470-5	CRIMPER, WIRE F	1

DIMENSIONS:		TOLERANCES UNLESS OTHERWISE SPECIFIED:		OWN	CHK	APVD	NAME
mm	0 PLC ±	1 PLC ±	2 PLC ±	M. HERR	T. ELBIN	T. ELBIN	Ocean Side Feed Applicator
	3 PLC ±	4 PLC ±	ANGLES FINISH	TE Connectivity Harrisburg, PA 17105-3608			
MATERIAL	WEIGHT		SCALE		SHEET		RESTRICTED TO
	A1 00779 ©=2836609		1:2		1 of 4		REV A

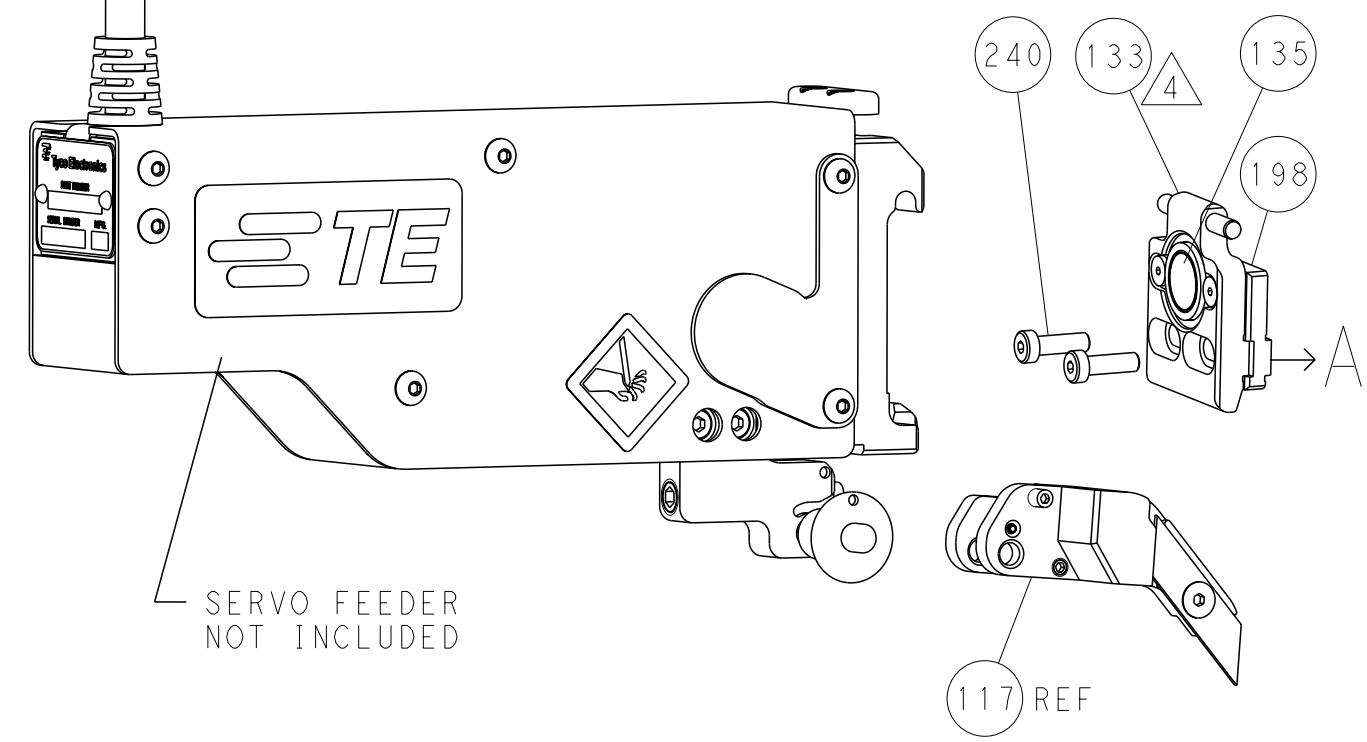
LOC	DIST	REVISIONS					
A	66	P	LYR	DESCRIPTION	DATE	OWN	APVD
		-		SEE SHEET 1	-	-	-

FEED TYPE

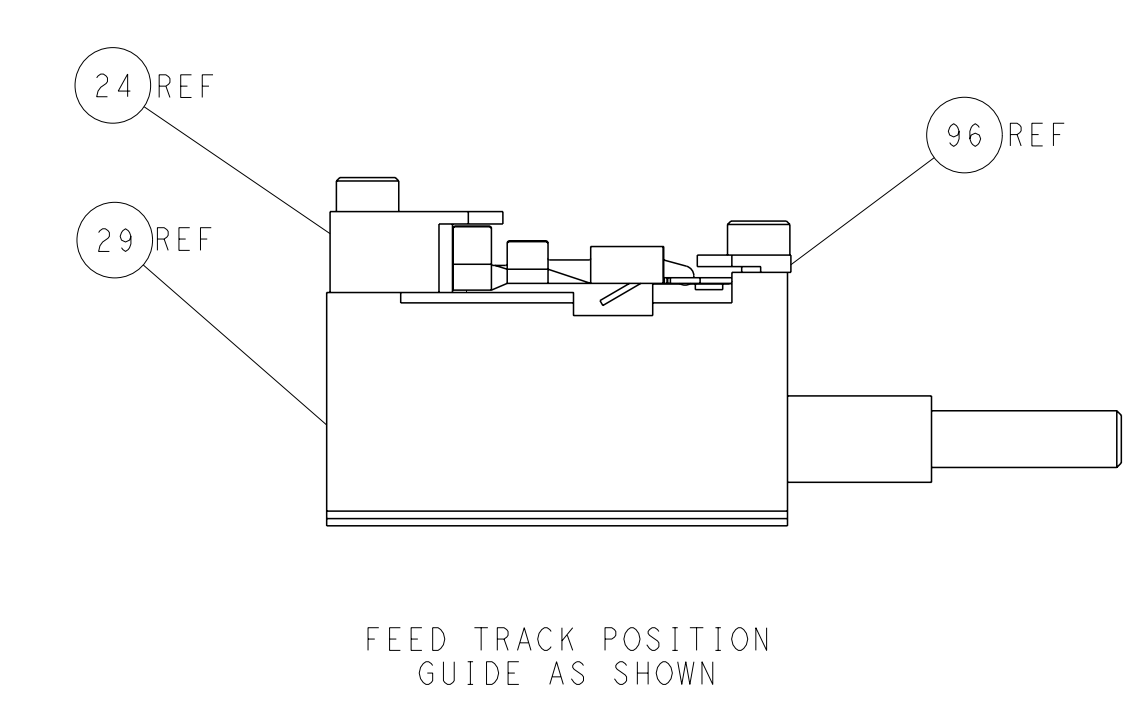
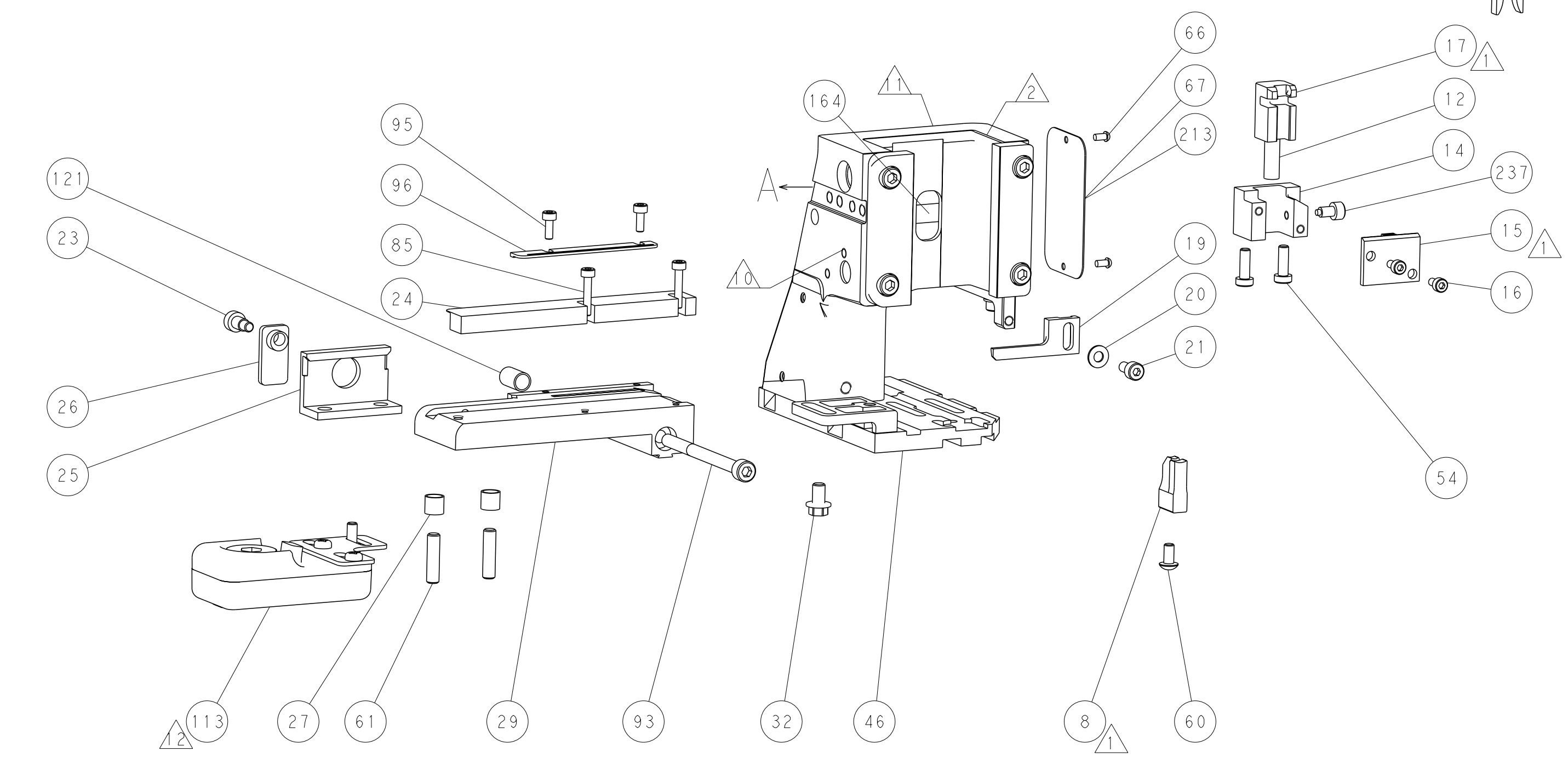
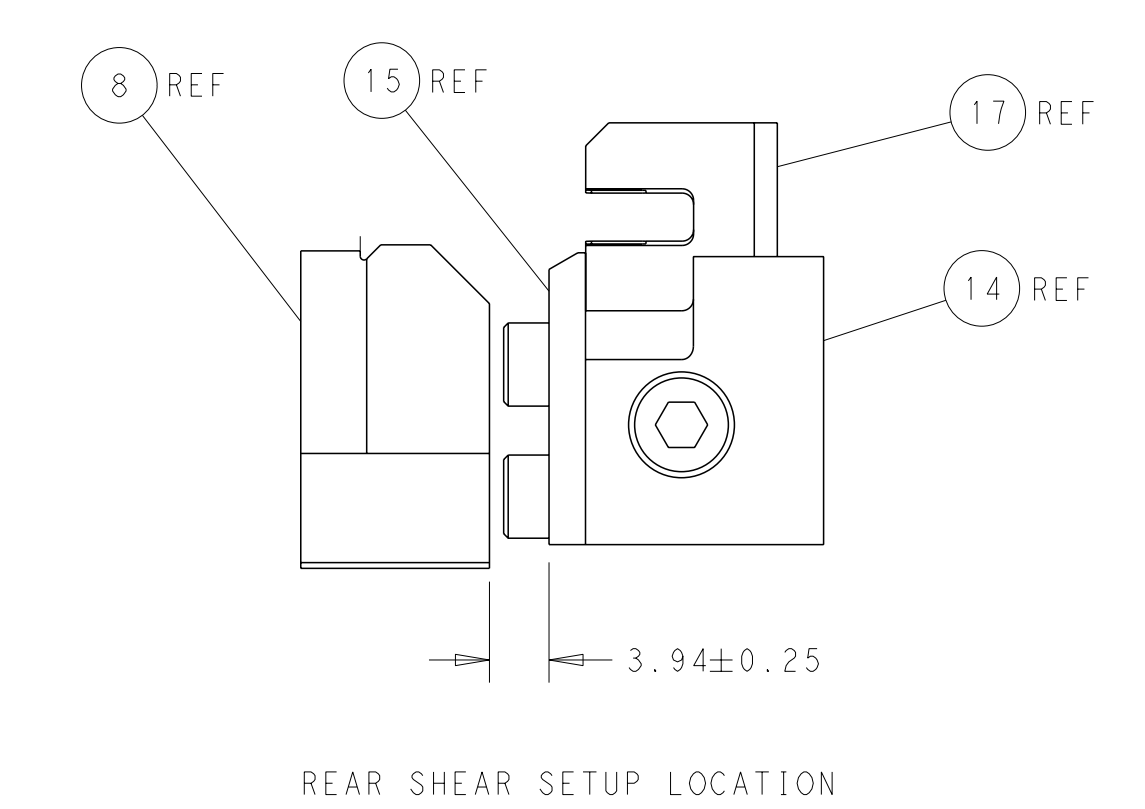
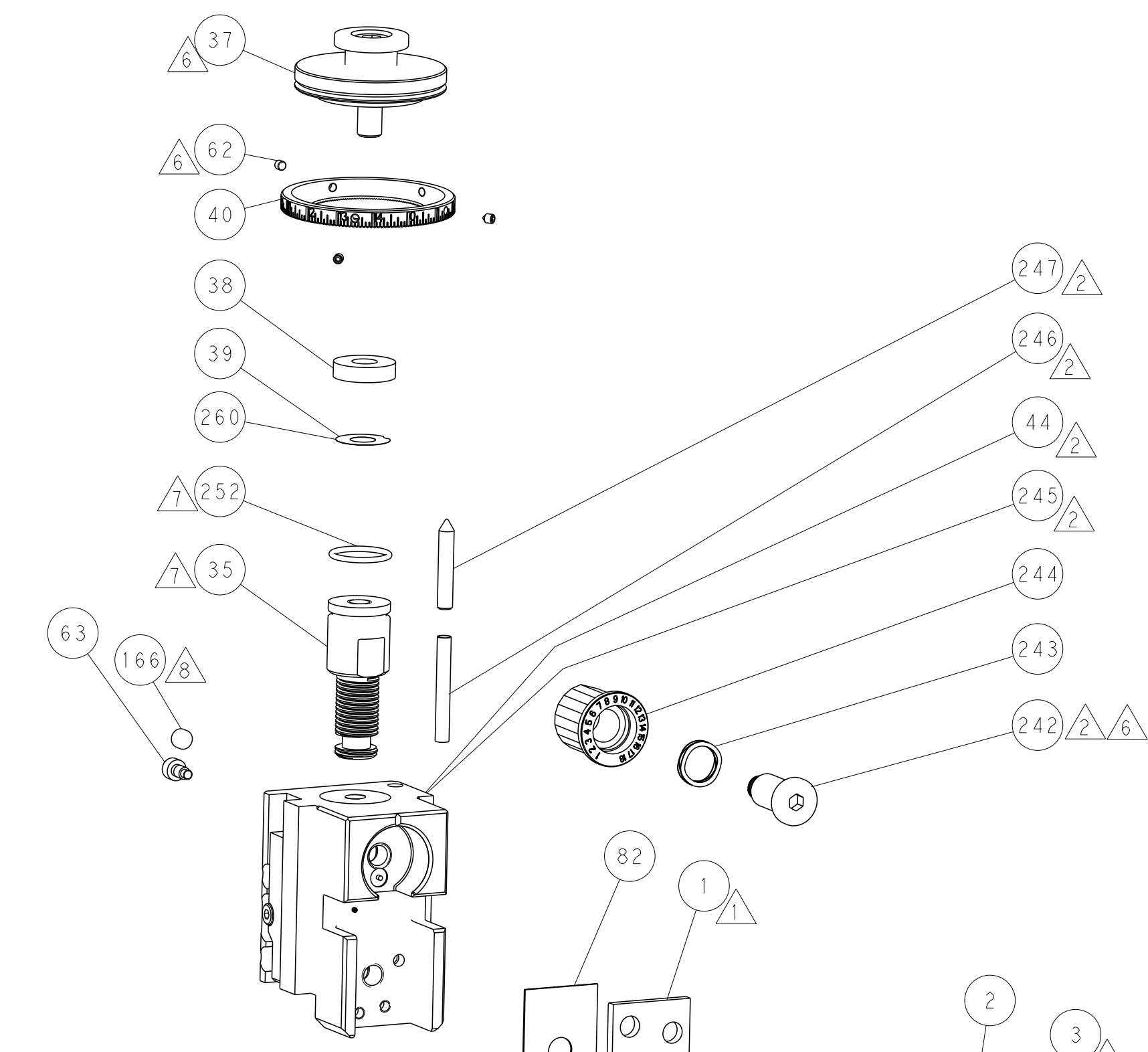
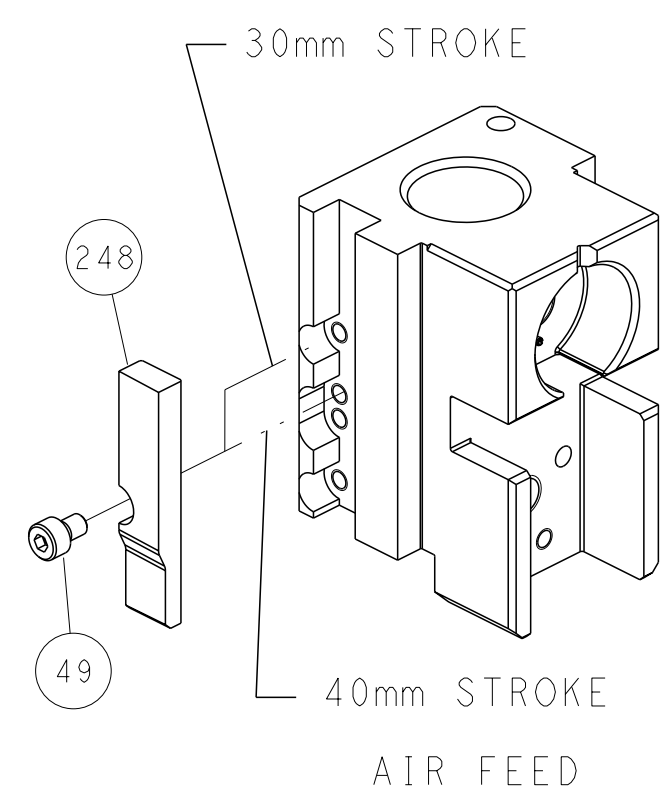
PNEUMATIC



SERVO LATCH PLATE



CAM POSITION



ATLANTIC VERSION
 Shown on sheets 1 of 4 & 2 of 4
 (Pacific version shown on sheets 3 of 4 & 4 of 4)

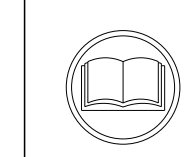
<small>THIS DRAWING IS A CONTROLLED DOCUMENT FOR TYCO ELECTRONICS CORPORATION. IT IS SUBJECT TO CHANGE AND THE USER MUST CONTACT THE ENGINEERING DEPARTMENT SHOULD BE CONTACTED FOR THE LATEST REVISION.</small>		OWN: M. HERR 01MAR2017 CHK: T. ELBIN 01MAR2017 APVD: T. ELBIN 01MAR2017	TE Connectivity Harrisburg, PA 17105-3608
DIMENSIONS: mm 	TOLERANCES UNLESS OTHERWISE SPECIFIED: 0 PLC ± 1 PLC ± 2 PLC ± 3 PLC ± 4 PLC ± ANGLES FINISH ±	NAME: Ocean Side Feed Applicator PRODUCT SPEC: APPLICATION SPEC: WEIGHT:	SIZE: A1 CAGE CODE: 00779 DRAWING NO: C=2836609 RESTRICTED TO:
MATERIAL:		CUSTOMER ACCESSIBLE PRODUCTION DRAWING	SCALE: 1:2 SHEET: 2 of 4 REV: A

PACIFIC VERSION TERMINATOR INTERFACE ADAPTER	PART NUMBER	REVISION	DESCRIPTION	FEED TYPE
	2-2836609-2	A	FINE CRIMP HEIGHT ADJUST	PNEUMATIC
	2-2836609-5	A	FINE CRIMP HEIGHT ADJUST	SERVO LATCH PLATE ⁴
	2-2836609-7	A	FINE CRIMP HEIGHT ADJUST	NONE
	7-2836609-7	A	CRIMP TOOLING KIT	-

APPLICATOR DATA		
CRIMP	SIZE	TYPE
WIRE	3.38 mm [.133]	F
INSUL	5.69 mm [.224]	F
APPLICATOR INSTRUCTIONS 408-10389		

TERMINAL DATA: DELPHI TERMINAL DELPHI CRIMP SPECIFICATION	
TERMINAL NAME: F 56 TAXI TERMINAL	
WIRE STRIP LENGTH 4.30-5.06 mm [.169-.199 IN]	INSULATION DIAMETER RANGE Ø3.36-3.97 mm [.132-.156 IN]
TERMINAL APPLICATION SPECIFICATION Crimp Information Sheet Rev 2013-10-29	
TERMINALS APPLIED	
TE TERMINAL 2303712-1	DELPHI TERMINAL 02965511

WIRE SIZE	CRIMP HEIGHT mm [INCH]	CRIMP HEIGHT REFERENCE SETTING
0.5+0.8mm ²	1.75+/-0.05 [.069+/-0.002]	8.5



- ¹ RECOMMENDED SPARE PARTS
- ² GREASE BEARING SURFACES LIGHTLY
- 3. LUBRICATE DAILY PER THE APPLICATOR INSTRUCTION SHEET SUPPLIED WITH THE APPLICATOR.
- ⁴ APPLICATOR SPECIFIC DATA TO BE ENTERED INTO BLANK MEMORY CHIP AT ASSEMBLY. SEE BELOW FOR PART NUMBER:
PNEUMATIC FEED WITH "SMART APPLICATOR" CONVERSION: 8-2836609-4
SERVO FEED WITH "FINE CRIMP HEIGHT ADJUST": 8-2836609-5
- 5. ADJUSTMENT OF THE STRIPPER MAY BE REQUIRED WHEN MOVING THE APPLICATOR BETWEEN BENCH AND LEADMAKER APPLICATIONS.
- ⁶ APPLY PART NUMBER 1-23419-5 LOCTITE TO THREADS OF ITEM 62.
APPLY PART NUMBER 2-23419-6 LOCTITE TO THREADS OF ITEM 242.
- ⁷ GREASE THREADS, GROOVE AND O-RING ON ITEMS 139 & 152.
- ⁸ MAGNET MUST BE ORIENTED CORRECTLY IN ORDER TO PROPERLY ACTUATE THE COUNTER.
- ⁹ CRIMP HEIGHT REFERENCE SETTING WAS THE SETTING USED WHEN THE APPLICATOR WAS QUALIFIED AT THE FACTORY. ADJUSTMENT MAY BE NECESSARY WHEN RUNNING APPLICATOR IN THE FIELD.
- ¹⁰ TERMINAL PITCH NOT COMPATIBLE WITH MECHANICAL FEED.
- ¹¹ TERMINAL LUBRICANT IS RECOMMENDED.

***WARNING**
ON INSTALLATION, SET WIRE DISC, ITEM 40 TO LARGEST WIRE SIZE SETTING. USE OF SETTINGS BELOW MINIMUM REQUIRED CRIMP HEIGHT SETTING WILL CAUSE DAMAGE TO CRIMP TOOLING.

-77	-27	-25	-22	PART NO	DESCRIPTION	ITEM NO
-	1	1	1	2119782-1	FINE ADJUST HEAD ASM, PACIFIC STYLE	251
-	-	-	1	2119640-1	PUSH ROD, AIR FEED	250
-	-	-	1	1803259-1	BUSHING, FLANGED	249

PACIFIC VERSION
Shown on sheets 3 of 4 & 4 of 4
(Atlantic version shown on sheets 1 of 4 & 2 of 4)

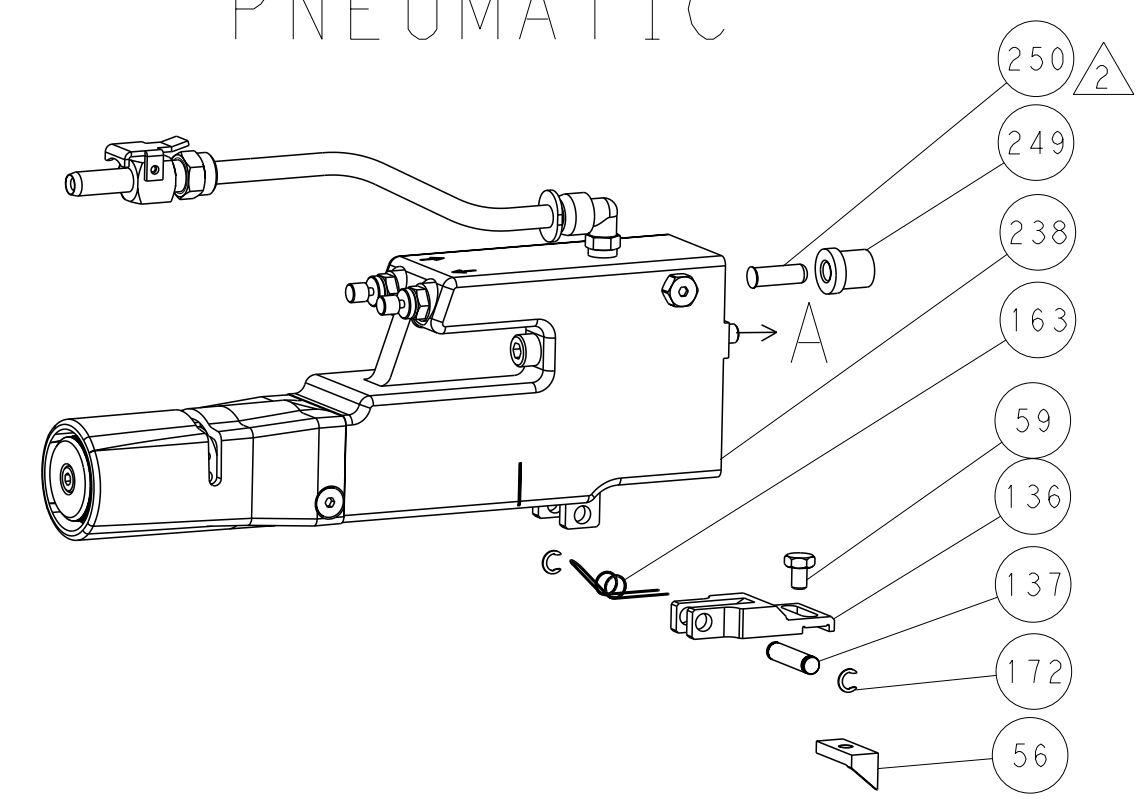
SET UP GAUGE	LOC	DIST	REVISIONS			
2119599-1	A	66	#	DATE	BY	APPV
			-	SEE SHEET 1	-	-

#	DATE	BY	APPV	DESCRIPTION	DATE	OWN	APPV
-	1	1	1	1-22279-3	SPRING, COMPRESSION		246
-	1	1	1	2119082-4	CAM, SNAIL, INSULATION ADJUSTMENT		244
-	1	1	1	2079764-1	WASHER, WAVE SPRING, CREST-TO-CREST		243
-	1	1	1	2119083-1	RETAINER, INSULATION DIAL		242
-	-	2	-	2168400-6	SHCS, LOW HEAD, RoHS, M5 X 16		240
-	-	-	1	2063440-1	AIR FEED MODULE		238
-	1	1	1	356885-5	STOP, SHEAR		237
-	-	1	-	2119740-2	TAG, IDENTIFICATION		213
-	-	1	-	1901094-3	SPACER, FEEDER		198
-	-	-	2	21045-3	RING, RETAIN, EXTERN, 3/16 CRESCENT		172
-	1	1	1	994969-1	MAGNET, RARE EARTH HIGH ENERGY		166
-	REF	REF	REF	994970-2	COUNTER, MAGNETIC		164
-	-	-	1	240638-1	SPRING, FEED FINGER		163
-	1	1	1	8-21084-1	O-RING, .801 ID, .070 DIA. MAT.		152
-	-	-	1	2119641-2	FEED CAM, AIR FEED		151
-	1	1	1	2119798-2	DETENT PIN		145
-	1	1	1	2079383-8	SCR, BHSC, RoHS (M4 X 16)		144
-	2	2	2	2168400-5	SHCS, LOW HEAD, RoHS, M4 X 20		143
-	1	1	1	1-2119656-0	APPLICATOR BASIC ASSEMBLY, SF		141
-	1	1	1	2119650-1	RAM, ASIAN STYLE, SIDE FEED		140
-	1	1	1	2119092-2	BOLT, ADJUSTMENT		139
-	-	-	1	3-23627-7	PIN, RETAIN, GRVD, 3/16 X .854		137
-	-	-	1	2119799-1	HOLDER, FEED FINGER, AF		136
-	-	REF	-	SEE NOTE 4	MEMORY CHIP, PROGRAMMED		135
-	-	1	-	1633743-1	SERVO FEED LATCH ASM		133
-	1	1	1	1-22281-8	SPRING, COMPRESSION		121
-	-	REF	-	2119944-1	FEED FINGER ASSEMBLY, SF		117
-	1	1	1	2119955-1	ASSY, LUBRICATOR, SIDE FEED		113
-	1	1	1	1803258-1	FRONT STRIP GUIDE		96
-	2	2	2	2168083-1	SCR, SKT HD CAP, RoHS, M3 X 8.0		95
-	1	1	1	2168083-6	SCR, SKT HD CAP, RoHS, M5 X 65		93
-	2	2	2	1-2168083-3	SCR, SKT HD CAP, RoHS, M3 X 16		85
-	1	1	1	455888-5	SPACER, CRIMPER		82
-	1	1	1	6-240641-0	SPACER		81
-	1	1	1	2119956-1	DOCUMENTATION PACKAGE		71
-	1	-	1	2119740-1	TAG, IDENTIFICATION		67
-	2	2	2	2168078-1	SCREW, DRIVE, RH, RoHS, 2 x .188		66
-	1	1	1	2119793-1	LIMITER, ADJUSTMENT BOLT		63
-	3	3	3	992763-5	SCR, SET, SOC, CONE POINT, M3 x 4.0		62
-	2	2	2	2-18032-5	SCR, SET, FLT POINT M5 X 20.0		61
-	-	-	1	5-18022-5	SCR, HEX HD CAP, M4 X 6.0		59
-	-	-	1	1338683-1	FEED PAWL		56
-	2	2	2	2168083-8	SCR, SKT HD CAP, RoHS, M4 X 16		53
-	-	-	1	18023-9	SCR, SKT HD CAP M4 X 6.0		49
-	1	1	1	2079383-7	SCR, BHSC, RoHS (M8 X 25)		41
-	1	1	1	2119645-1	DISC, NUMBERED FA WIRE ADJUSTMENT		40
-	1	1	1	2119957-1	APPLICATOR SHIM PACK		39
-	1	1	1	2119644-2	RAM WASHER, PRECISION		38
-	1	1	1	2161328-1	HEX HEAD, FLANGED, M5 x 8mm LONG		32
-	1	1	1	2-1901091-3	PLATE, REAR STRIP GUIDE		29
-	2	2	2	22281-8	SPRING, COMPRESSION		27
-	1	1	1	356835-1	LEVER, DRAG RELEASE		26
-	1	1	1	1673009-1	DRAG, TERMINAL		25
-	1	1	1	4-189124-2	GUIDE, FRONT STRIP		24
-	1	1	1	980371-4	SCR, SKT HD SHLDR 5.0 DIA X 6.0		23
-	1	1	1	2168083-2	SCR, SKT HD CAP, RoHS, M4 X 8.0		21
-	1	1	1	1-18028-2	WASHER, FLAT, REG M4		20
-	1	1	1	2119533-2	STRIPPER, SIDE FEED		19
-	1	1	1	1673257-7	SHEAR, FLOATING		17
-	2	2	2	1-2168083-1	SCR, SKT HD CAP, RoHS, M3 X 6		16
-	1	1	1	1673256-6	PLATE, REAR SHEAR		15
-	1	1	1	1673255-3	HOLDER, REAR SHEAR		14
-	1	1	1	3-22280-3	SPRING, COMPRESSION		12
-	-	-	-	-	-		10
-	-	-	-	-	-		9
-	1	1	1	6-1803252-0	ANVIL, COMBINATION		8
-	-	-	-	-	-		7
-	1	1	1	1-690468-7	DEPRESSOR SHEAR, REAR		6
-	-	-	-	-	-		5
-	1	1	1	2-238009-1	BLOCK, FL CRIMPER SPACER		4
-	1	1	1	1-1803384-3	CRIMPER, INSULATION F		3
-	1	1	1	455888-9	SPACER, CRIMPER		2
-	1	1	1	1803470-5	CRIMPER, WIRE F		1

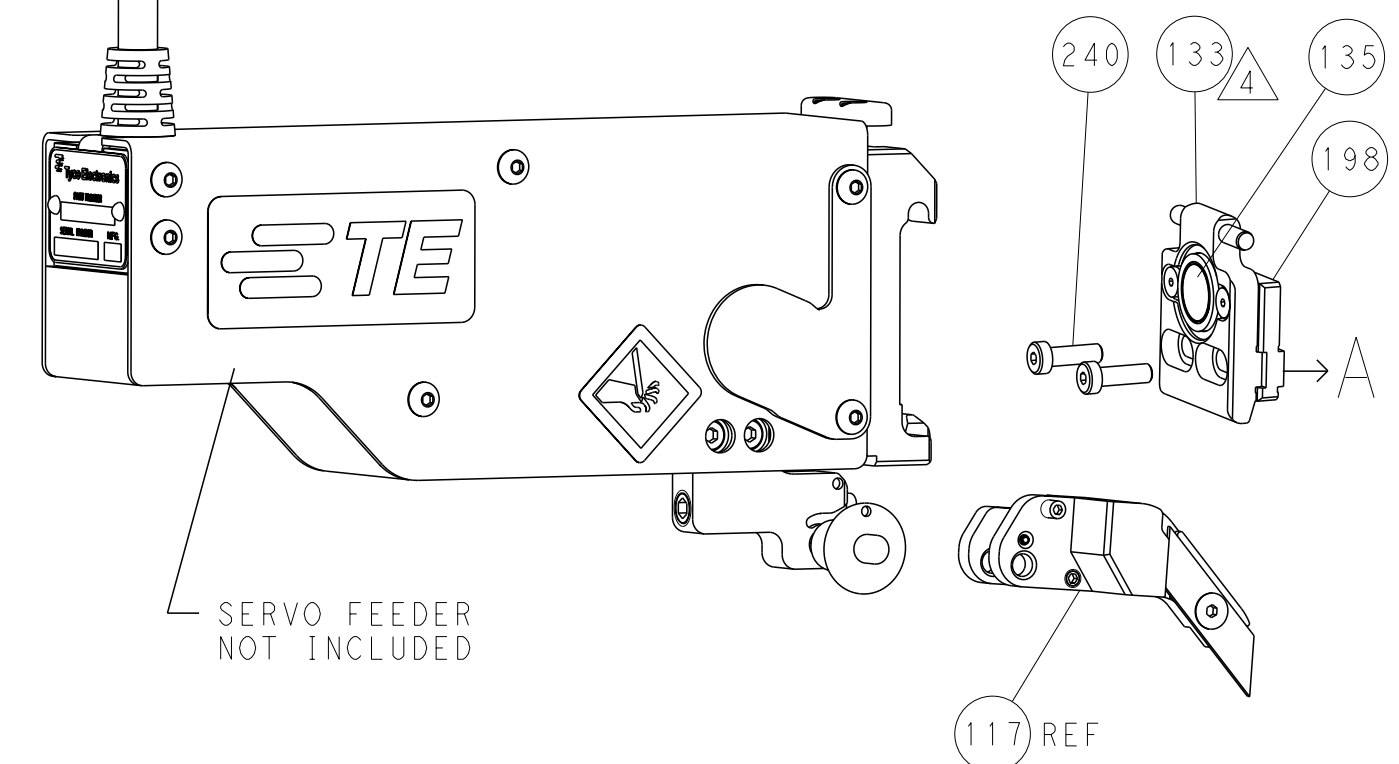
DIMENSIONS:		TOLERANCES UNLESS OTHERWISE SPECIFIED:		OWN	CHK	APPV	DATE	NAME					
mm	0 PLC ±	1 PLC ±	2 PLC ±	M	HERR	T	01MAR2017	STE TE Connectivity					
	3 PLC ±	4 PLC ±	ANGLES FINISH		ELBIN		01MAR2017	Harrisburg, PA 17105-3608					
								Ocean Side Feed Applicator					
MATERIAL								SIZE	CAGE CODE	DRAWING NO	RESTRICTED TO		
								A1	00779	©=2836609			
Customer Accessible Production Drawing								SCALE	1:2	SHEET	3 of 4	REV	A

LOC		DIST		REVISIONS			
A	66	P	LYR	DESCRIPTION	DATE	OWN	APVD
		-		SEE SHEET 1	-	-	-

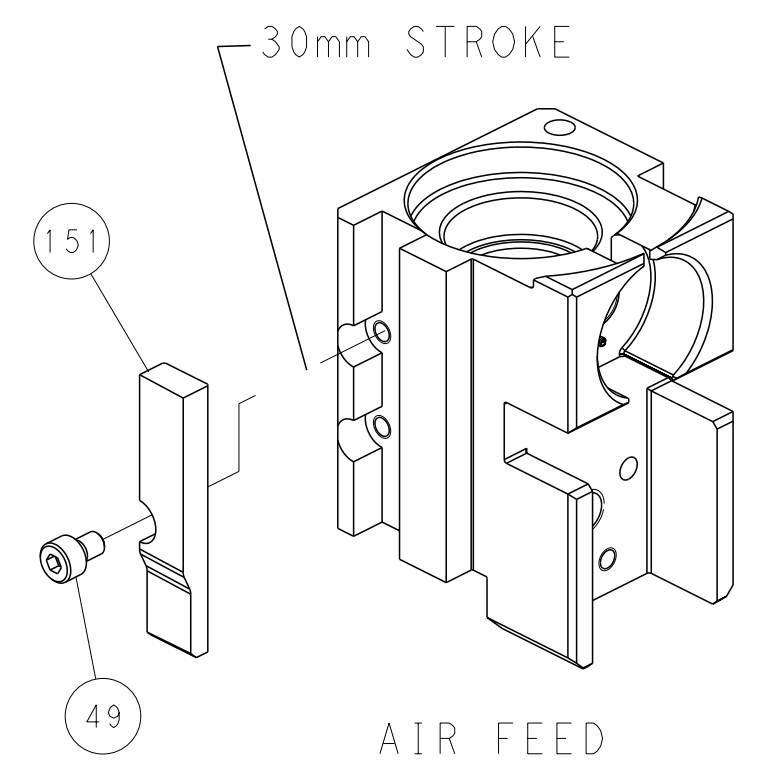
FEED TYPE PNEUMATIC



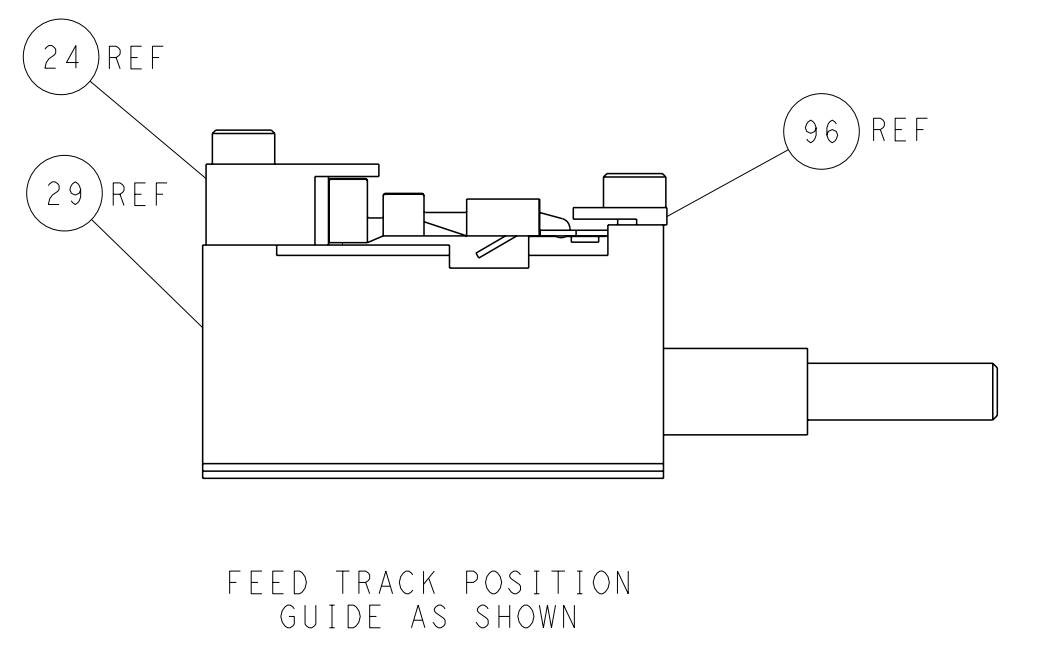
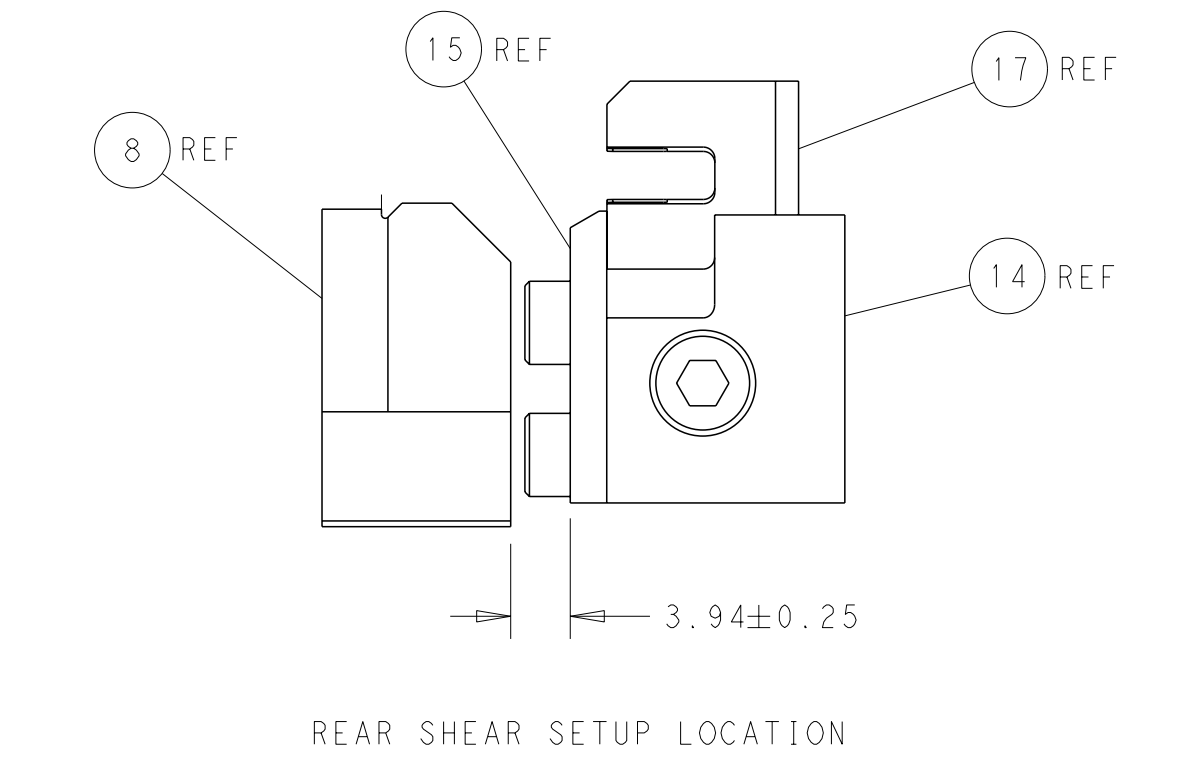
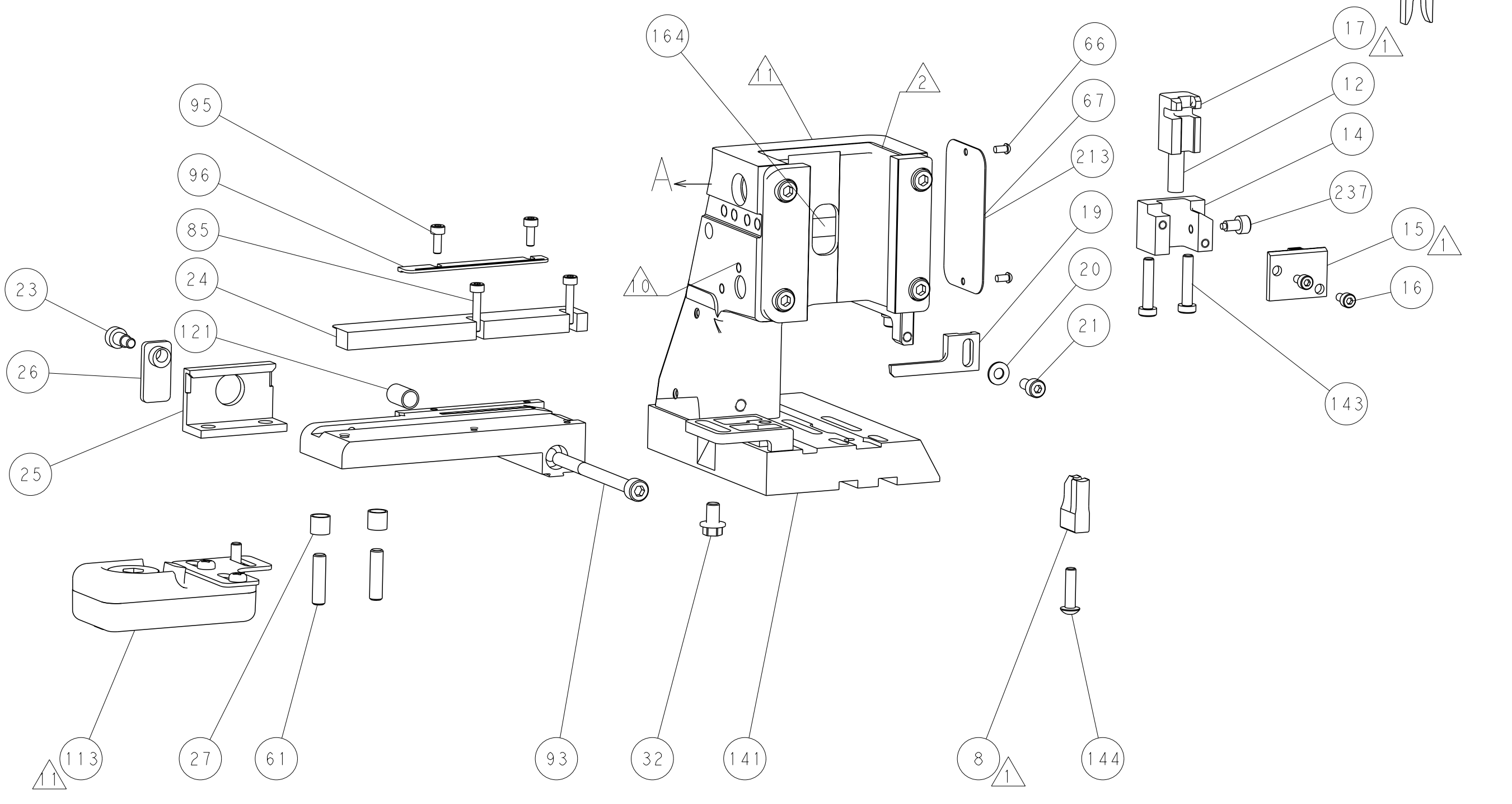
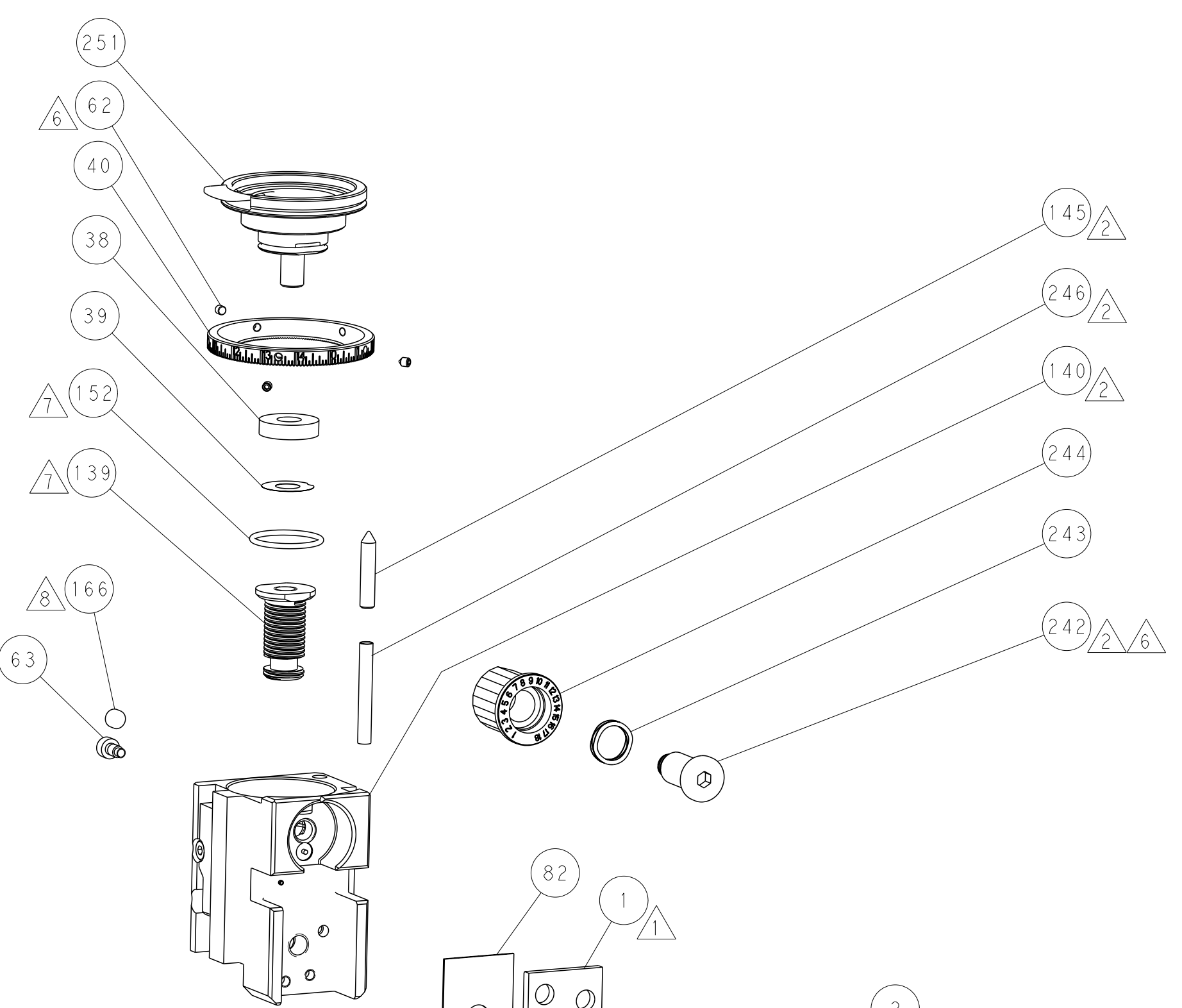
SERVO LATCH PLATE



CAM POSITION



AIR FEED



PACIFIC VERSION
 Shown on sheets 3 of 4 & 4 of 4
 (Atlantic version shown on sheets 1 of 4 & 2 of 4)

<small>THIS DRAWING IS A CONTROLLED DOCUMENT FOR TYCO ELECTRONICS CORPORATION. IT IS SUBJECT TO CHANGE AND THE USER'S RESPONSIBILITY TO OBTAIN THE LATEST REVISION SHOULD BE CONTACTED FOR THE LATEST REVISION.</small>		OWN: M. HERR CHK: T. ELBIN APVD: T. ELBIN PRODUCT SPEC: - APPLICATION SPEC: - WEIGHT: - MATERIAL: -	DATE: 01MAR2017 DATE: 01MAR2017 NAME: Ocean Side Feed Applicator SIZE: A1 CAGE CODE: 00779 DRAWING NO: C=2836609 SCALE: 1:2 SHEET: 4 of 4 REV: A	TE Connectivity Harrisburg, PA 17105-3608
---	--	---	--	--