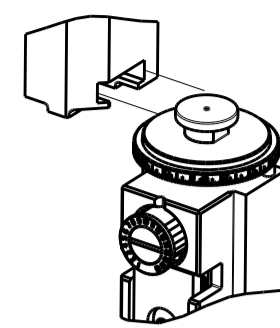


PART NUMBER	REVISION	DESCRIPTION	FEED TYPE
2836424-2	C	FINE CRIMP HEIGHT ADJUST	PNEUMATIC
7-2836424-2	C	PNEUMATIC AND CRIMP TOOLING KIT	PNEUMATIC
7-2836424-7	A	CRIMP TOOLING KIT	-

ATLANTIC VERSION TERMINATOR INTERFACE ADAPTER

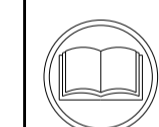


APPLICATOR DATA		
CRIMP	SIZE	TYPE
WIRE	1.00 mm [.039]	F
INSUL	1.07 mm [.042]	F

APPLICATOR INSTRUCTIONS 408-35042

TERMINAL DATA: TE TERMINAL		TE CRIMP SPECIFICATION	
TERMINAL NAME: AMP 1.5 MINI CT CONTACT			
WIRE STRIP LENGTH 1.50-1.90 mm [.059-.075 IN]		INSULATION DIAMETER RANGE Ø0.85-1.03 mm [.033-.041 IN]	
TERMINAL APPLICATION SPECIFICATION	114-51010	-	-
TERMINALS APPLIED			
TE TERMINAL	TE TERMINAL	TE TERMINAL	TE TERMINAL
84727-1	84727-2		

WIRE SIZE	CRIMP HEIGHT mm [INCH]	CRIMP HEIGHT REFERENCE SETTING
24 AWG OR 0.23mm ²	0.75+/-0.03 [.030+/- .001]	4.8
26 AWG OR 0.14mm ²	0.69+/-0.03 [.027+/- .001]	5.5
28 AWG OR 0.09mm ²	0.64+/-0.03 [.025+/- .001]	5.9



- RECOMMENDED SPARE PARTS
 - REFER TO SUPPLIED INSTRUCTION SHEET FOR CLEANING, LUBRICATION AND STORAGE OF APPLICATOR.
 - APPLY PART NUMBER 2-23419-6 LOCTITE TO THREADS OF ITEM 242.
 - CRIMP HEIGHT REFERENCE SETTING WAS THE SETTING USED WHEN THE APPLICATOR WAS QUALIFIED AT THE FACTORY. ADJUSTMENT MAY BE NECESSARY WHEN RUNNING APPLICATOR IN THE FIELD.
 - TERMINAL PITCH NOT COMPATIBLE WITH MECHANICAL FEED.
6. UNLESS SPECIFIED OTHERWISE TORQUE VALUES SHALL BE USED PER DOCUMENT, 101-35000.

***WARNING**
ON INSTALLATION, SET WIRE DISC TO CRIMP HEIGHT REFERENCE SETTING FOR LARGEST WIRE SIZE. CRIMP HEIGHT REFERENCE SETTINGS GREATER THAN THE VALUE SHOWN MAY CAUSE DAMAGE TO THE CRIMP TOOLING, REFER TO THE INSTRUCTION SHEET FOR PROPER SETUP AND ADJUSTMENTS.

ATLANTIC VERSION
Shown on sheets 1 of 4 & 2 of 4
(Pacific version shown on sheets 3 of 4 & 4 of 4)

LOC	DIST	REVISIONS			
A	66	REV	DATE	BY	APPV
		1	11AUG2016	MEH	TE
		A	24OCT2016	MEH	GB
		B	25FEB2020	FJ	TE
		C	21APR2020	FZ	GB

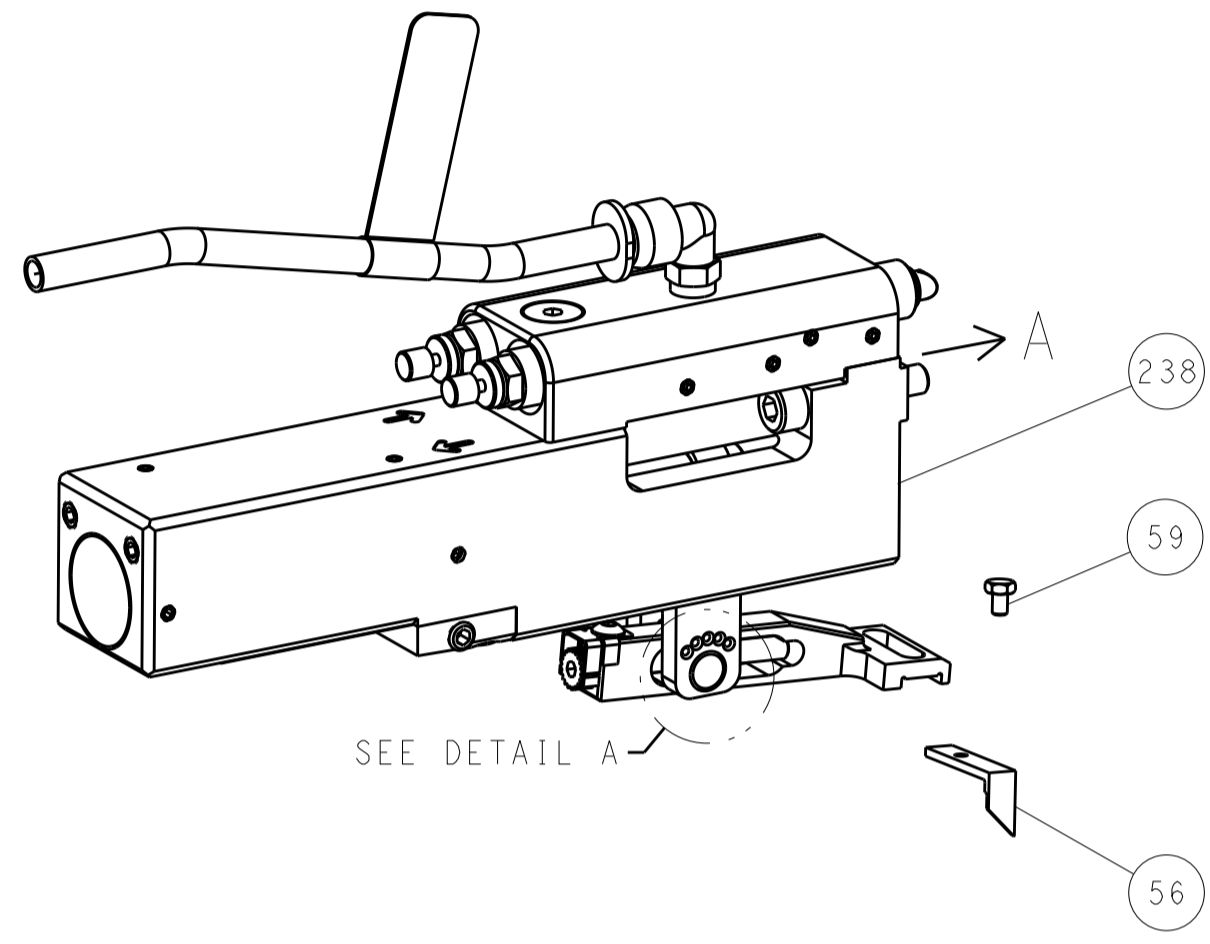
-	1	1	2119641-1	FEED CAM, AIR FEED	248	
-	1	1	2119082-5	CAM, SNAIL, INSULATION ADJUSTMENT	244	
-	1	1	2079764-1	WASHER, WAVE SPRING, CREST-TO-CREST	243	
-	1	1	2119083-1	RETAINER, INSULATION DIAL	242	
-	1	1	7-18023-7	SCR, SKT HD CAP M3 X 4.0	241	
-	1	1	2844940-1	AIR FEED MODULE	238	
-	REF	REF	994970-2	COUNTER, MAGNETIC	164	
-	1	1	2844908-1	SCREW, LOCKING	99	
-	1	1	2844907-1	POST, LOCKING	98	
-	1	1	1-455888-7	SPACER, CRIMPER	82	
-	1	1	1803607-3	DOCUMENTATION PACKAGE	71	
-	1	1	2119791-9	DEPRESSOR, WIRE	70	
-	1	1	2119740-1	TAG, IDENTIFICATION	67	
-	2	2	2168078-1	SCREW, DRIVE, RH, RoHS, 2 x .188	66	
-	1	1	2168083-2	SCR, SKT HD CAP, RoHS, M4 X 8.0	60	
-	1	1	5-18022-5	SCR, HEX HD CAP, M4 X 6.0	59	
-	1	1	1-1338683-3	FEED PAWL	56	
-	4	4	2168083-3	SCR, SKT HD CAP, RoHS, M4 X 12.0	54	
-	1	1	18023-9	SCR, SKT HD CAP M4 X 6.0	49	
-	1	1	1803583-9	APPLICATOR BASIC ASSEMBLY, SF	46	
-	1	1	1803515-1	RAM ASSEMBLY, SF ATLANTIC	44	
-	1	1	1803602-1	SCR, BHSC, RoHS (M8 X 25)	41	
-	1	1	3-1752356-9	SUPPORT, TERMINAL	34	
-	2	2	2079383-5	SCR, BHSC, RoHS (M4 X 20)	33	
-	2	2	2-2844962-3	SPACER, CYLINDRICAL, STRIP GUIDE	30	
-	1	1	2844992-4	ASSEMBLY, STRIP GUIDE	29	
-	1	1	240792-5	DRAG, TERMINAL	25	
-	1	1	1320928-2	STRIP GUIDE	24	
-	1	1	2168083-2	SCR, SKT HD CAP, RoHS, M4 X 8.0	21	
-	2	2	1-18028-2	WASHER, FLAT, REG M4	20	
-	1	1	2119533-4	STRIPPER, SIDE FEED	19	
-	1	1	2119806-1	INSERT, SHEAR	13	
-	1	1	3-22280-3	SPRING, COMPRESSION	12	
-	1	1	1-356885-5	STOP, SHEAR	11	
-	1	1	2119805-1	SHEAR HOLDER, FRONT	10	
-	1	1	1803095-6	FLOATING SHEAR, FRONT	9	
-	1	2	1	3-1803252-4	ANVIL, COMBINATION	8
-	-	-	-	-	7	
-	-	-	-	-	6	
-	1	1	2119757-1	DEPRESSOR, SHEAR	5	
-	1	1	4-238011-3	BLOCK, CRIMPER SPACER	4	
-	1	2	1	9-1803017-3	CRIMPER, INSULATION F	3
-	1	1	455888-4	SPACER, CRIMPER	2	
-	1	2	1	6-1633713-9	CRIMPER, WIRE PREMIUM	1
-	77	72	-2	PART NO	ITEM NO	

DIMENSIONS:		TOLERANCES UNLESS OTHERWISE SPECIFIED:		MATERIAL:		FINISH:		WEIGHT:		SCALE:	
mm	0 PLC ±	1 PLC ±	2 PLC ±	3 PLC ±	4 PLC ±	ANGLES	FINISH	Customer Accessible Production Drawing	SCALE	1:2	SHEET 1 OF 4
APVD		APVD		APVD		APVD		APVD		APVD	
CHK		CHK		CHK		CHK		CHK		CHK	
OWN		OWN		OWN		OWN		OWN		OWN	
DATE		DATE		DATE		DATE		DATE		DATE	
11AUG2016		11AUG2016		11AUG2016		11AUG2016		11AUG2016		11AUG2016	
HERR		ELBIN		ELBIN		ELBIN		ELBIN		ELBIN	
NAME		NAME		NAME		NAME		NAME		NAME	
Ocean Side Feed		Ocean Side Feed		Ocean Side Feed		Ocean Side Feed		Ocean Side Feed		Ocean Side Feed	
Applicator		Applicator		Applicator		Applicator		Applicator		Applicator	
SIZE		CAGE CODE		DRAWING NO		RESTRICTED TO		SIZE		CAGE CODE	
A1		00779		C=2836424		-		A1		00779	

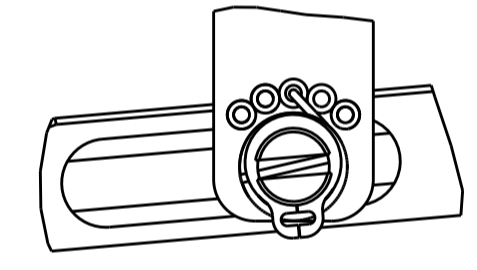
LOC	DIST	REV	DATE	BY	APPV
A	66				

FEED TYPE

PNEUMATIC

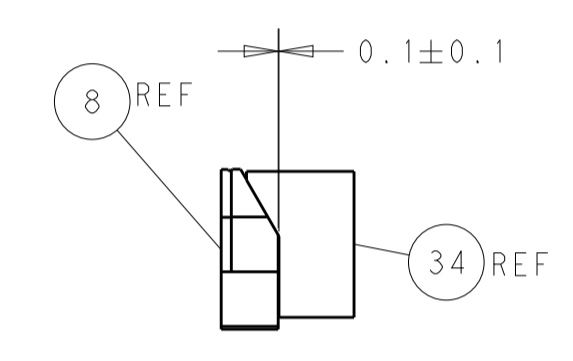
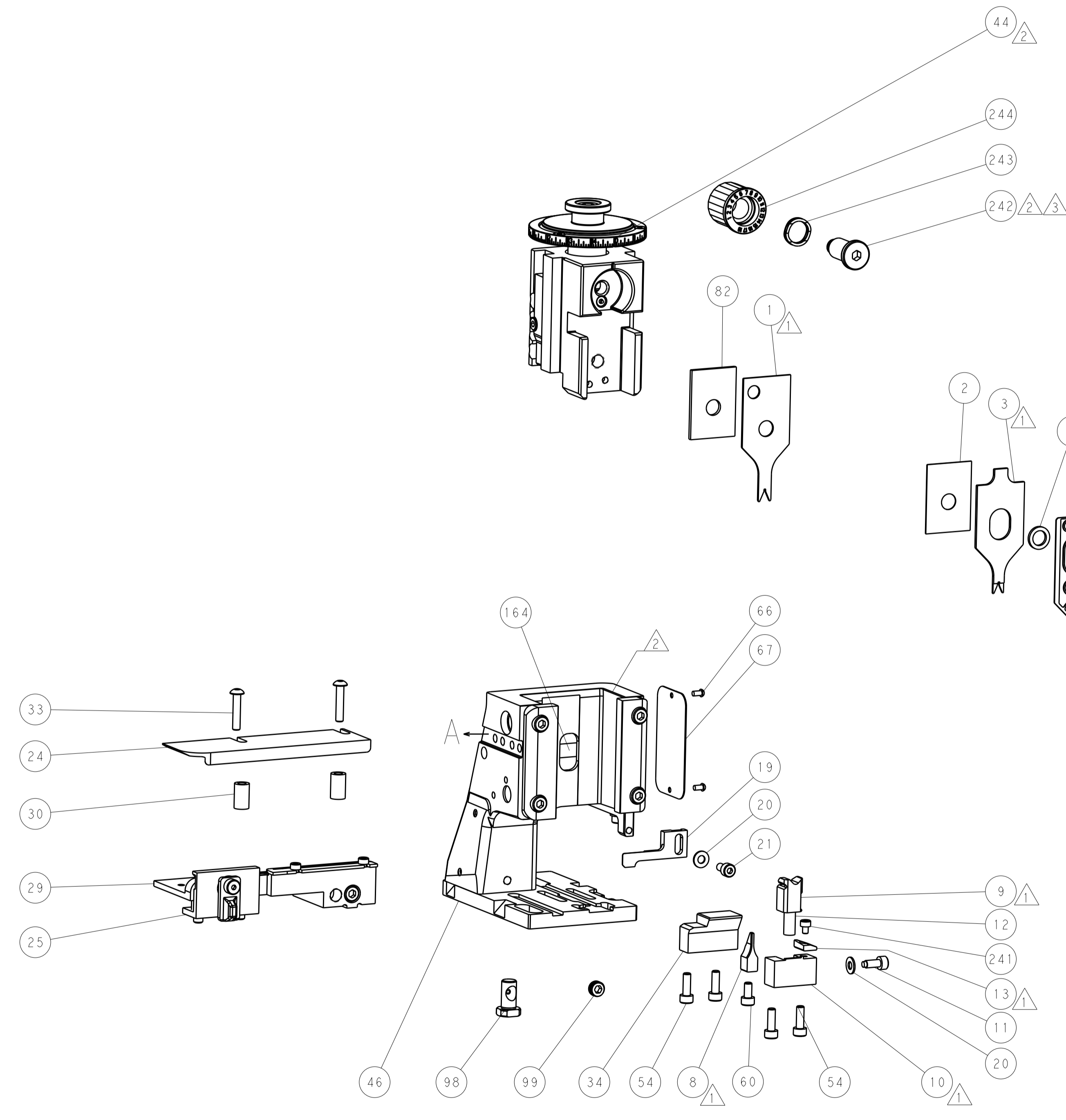
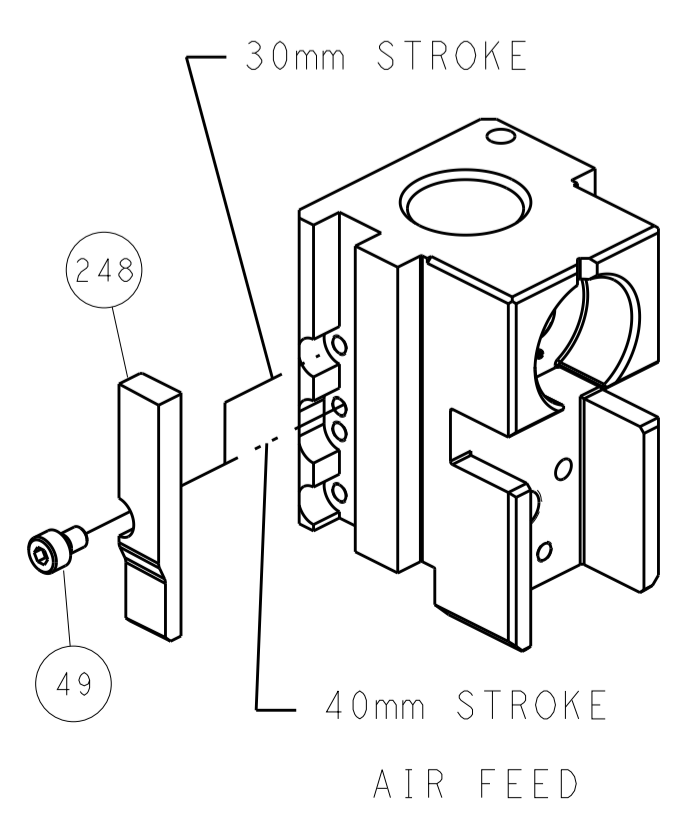


FEED SPRING SETTING POSITION (SHOWN FROM REAR SIDE)

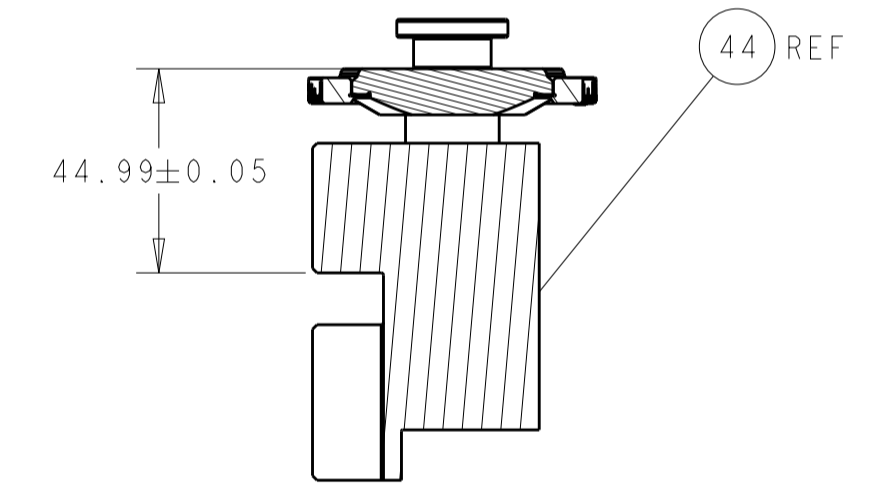


DETAIL A

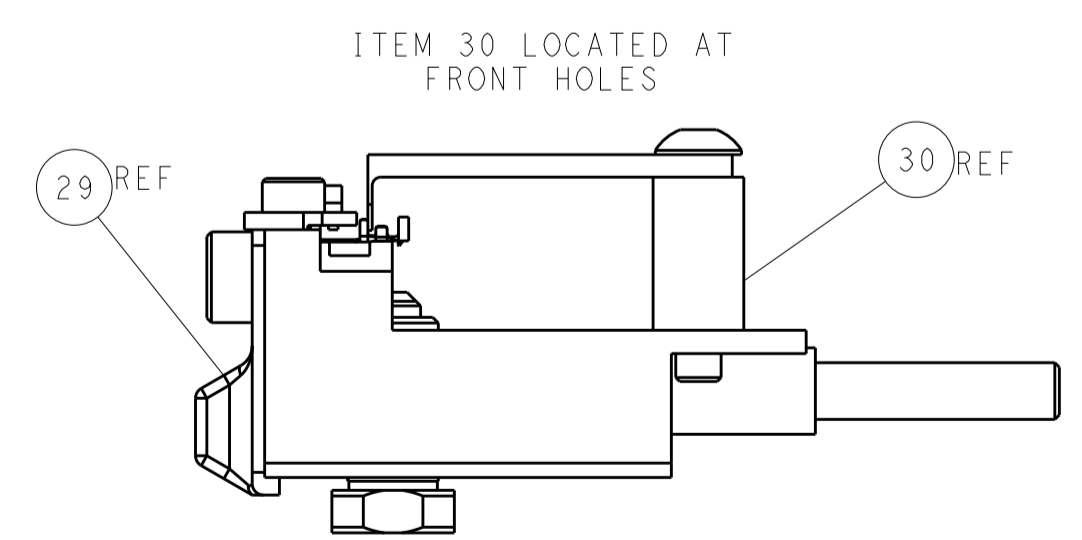
CAM POSITION



TERMINAL SUPPORT LOCATION



RAM SET-UP

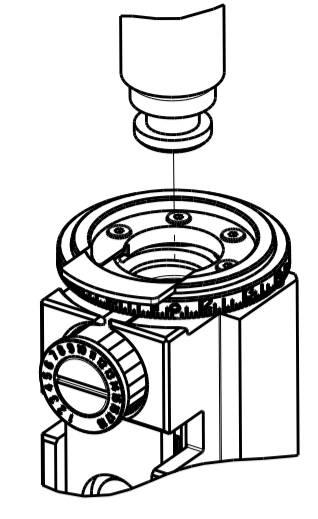


FEED TRACK POSITION GUIDE BY INSULATION BARREL

ATLANTIC VERSION
 Shown on sheets 1 of 4 & 2 of 4
 (Pacific version shown on sheets 3 of 4 & 4 of 4)

DIMENSIONS: mm 		TOLERANCES UNLESS OTHERWISE SPECIFIED: 0 PLC ± 1 PLC ± 2 PLC ± 3 PLC ± 4 PLC ± ANGLES ±		DWN M_HERR 11AUG2016 CHK T_ELBIN 11AUG2016 APVD T_ELBIN 11AUG2016 PRODUCT SPEC APPLICATION SPEC WEIGHT Customer Accessible Production Drawing		NAME Ocean Side Feed Applicator SIZE CAGE CODE DRAWING NO. A1 00779 C=2836424 SCALE 1:2 SHEET 2 OF 4 REV C	
MATERIAL FINISH				RESTRICTED TO			

PACIFIC VERSION TERMINATOR
 INTERFACE ADAPTER



PART NUMBER	REVISION	DESCRIPTION	FEED TYPE
2-2836424-2	C	FINE CRIMP HEIGHT ADJUST	PNEUMATIC
7-2836424-7	A	CRIMP TOOLING KIT	-

APPLICATOR DATA		
CRIMP	SIZE	TYPE
WIRE	1.00 mm [.039]	F
INSUL	1.07 mm [.042]	F

APPLICATOR INSTRUCTIONS
 408-35042

TERMINAL DATA: TE TERMINAL		TE CRIMP SPECIFICATION	
TERMINAL NAME: AMP 1.5 MINI CT CONTACT			
WIRE STRIP LENGTH 1.50-1.90 mm [.059-.075 IN]		INSULATION DIAMETER RANGE Ø0.85-1.03 mm [.033-.041 IN]	
TERMINAL APPLICATION SPECIFICATION	114-51010	-	-
TERMINALS APPLIED Δ 5			
TE TERMINAL	TE TERMINAL	TE TERMINAL	TE TERMINAL
84727-1	84727-2	-	-

WIRE SIZE	CRIMP HEIGHT mm [INCH]	CRIMP HEIGHT REFERENCE SETTING Δ 4
24 AWG OR 0.23mm ²	0.75 +/- 0.03 [.030 +/- .001]	4.8
26 AWG OR 0.14mm ²	0.69 +/- 0.03 [.027 +/- .001]	5.5
28 AWG OR 0.09mm ²	0.64 +/- 0.03 [.025 +/- .001]	5.9

- Δ 1 RECOMMENDED SPARE PARTS
 - Δ 2 REFER TO SUPPLIED INSTRUCTION SHEET FOR CLEANING, LUBRICATION AND STORAGE OF APPLICATOR.
 - Δ 3 APPLY PART NUMBER 2-23419-6 LOCTITE TO THREADS OF ITEM 242.
 - Δ 4 CRIMP HEIGHT REFERENCE SETTING WAS THE SETTING USED WHEN THE APPLICATOR WAS QUALIFIED AT THE FACTORY. ADJUSTMENT MAY BE NECESSARY WHEN RUNNING APPLICATOR IN THE FIELD.
 - Δ 5 TERMINAL PITCH NOT COMPATIBLE WITH MECHANICAL FEED.
6. UNLESS SPECIFIED OTHERWISE TORQUE VALUES SHALL BE USED PER DOCUMENT, 101-35000.

***WARNING**
 ON INSTALLATION, SET WIRE DISC TO CRIMP HEIGHT REFERENCE SETTING FOR LARGEST WIRE SIZE. CRIMP HEIGHT REFERENCE SETTINGS GREATER THAN THE VALUE SHOWN MAY CAUSE DAMAGE TO THE CRIMP TOOLING, REFER TO THE INSTRUCTION SHEET FOR PROPER SETUP AND ADJUSTMENTS.

LOC	DIST	REVISIONS			
A	66	REV	DATE	BY	APPV
-	-	SEE SHEET 1	-	-	-

-	1	2119082-5	CAM, SNAIL, INSULATION ADJUSTMENT	244	
-	1	2079764-1	WASHER, WAVE SPRING, CREST-TO-CREST	243	
Δ 3	-	1	2119083-1	RETAINER, INSULATION DIAL	242
-	1	7-18023-7	SCR, SKT HD CAP M3 X 4.0	241	
-	1	2844940-1	AIR FEED MODULE	238	
-	REF	994970-2	COUNTER, MAGNETIC	164	
-	1	2119641-2	FEED CAM, AIR FEED	151	
-	1	2168083-8	SCR, SKT HD CAP, RoHS, M4 X 16	144	
-	4	2168083-9	SCR, SKT HD CAP, RoHS, M4 X 20	143	
-	1	1-1803583-0	APPLICATOR BASIC ASSEMBLY, SF	141	
-	1	1803516-1	RAM ASSEMBLY, SF PACIFIC	140	
-	1	2844908-1	SCREW, LOCKING	99	
-	1	2844907-1	POST, LOCKING	98	
-	1	1-455888-7	SPACER, CRIMPER	82	
-	1	1803607-3	DOCUMENTATION PACKAGE	71	
-	1	2119791-9	DEPRESSOR, WIRE	70	
-	1	2119740-1	TAG, IDENTIFICATION	67	
-	2	2168078-1	SCREW, DRIVE, RH, RoHS, 2 x .188	66	
-	1	5-18022-5	SCR, HEX HD CAP, M4 X 6.0	59	
-	1	1-1338683-3	FEED PAWL	56	
-	1	18023-9	SCR, SKT HD CAP M4 X 6.0	49	
-	1	1803602-1	SCR, BHSC, RoHS (M8 X 25)	41	
-	1	3-1752356-9	SUPPORT, TERMINAL	34	
-	2	2079383-5	SCR, BHSC, RoHS (M4 X 20)	33	
-	2	2-2844962-3	SPACER, CYLINDRICAL, STRIP GUIDE	30	
-	1	2844992-4	ASSEMBLY, STRIP GUIDE	29	
-	1	240792-5	DRAG, TERMINAL	25	
-	1	1320928-2	STRIP GUIDE	24	
-	1	2168083-2	SCR, SKT HD CAP, RoHS, M4 X 8.0	21	
-	2	1-18028-2	WASHER, FLAT, REG M4	20	
-	1	2119533-4	STRIPPER, SIDE FEED	19	
Δ 1	-	1	2119806-1	INSERT, SHEAR	13
-	1	3-22280-3	SPRING, COMPRESSION	12	
-	1	1-356885-5	STOP, SHEAR	11	
Δ 1	-	1	2119805-1	SHEAR HOLDER, FRONT	10
Δ 1	-	1	1803095-6	FLOATING SHEAR, FRONT -	9
Δ 1	1	1	3-1803252-4	ANVIL, COMBINATION	8
-	-	-	-	-	7
-	-	-	-	-	6
-	1	2119757-1	DEPRESSOR, SHEAR	5	
-	1	4-238011-3	BLOCK, CRIMPER SPACER	4	
Δ 1	1	1	9-1803017-3	CRIMPER, INSULATION F	3
-	1	455888-4	SPACER, CRIMPER	2	
Δ 1	1	1	6-1633713-9	CRIMPER, WIRE PREMIUM	1
-	77	-22	PART NO	DESCRIPTION	ITEM NO

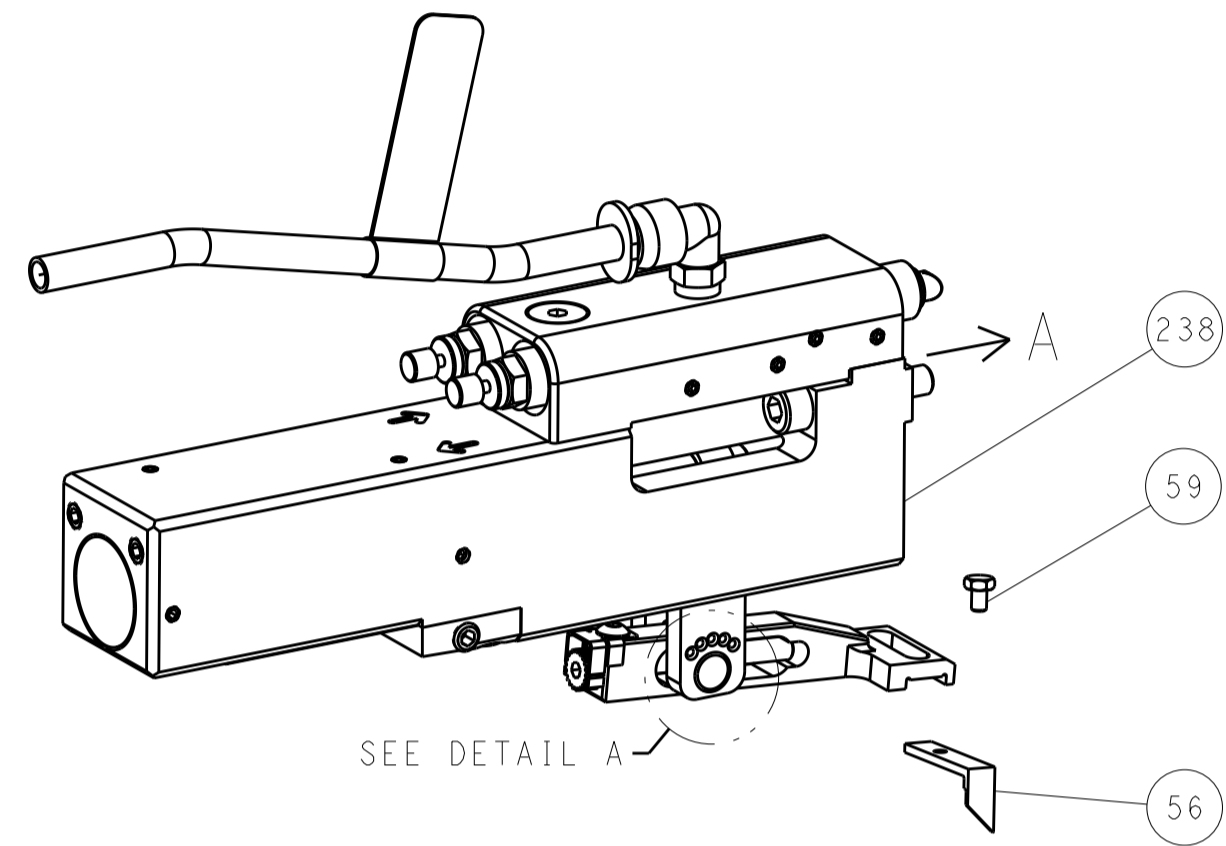
PACIFIC VERSION
 Shown on sheets 3 of 4 & 4 of 4
 (Atlantic version shown on sheets 1 of 4 & 2 of 4)

DIMENSIONS: mm		TOLERANCES UNLESS OTHERWISE SPECIFIED:		DWG: JH_HERR 11AUG2016		REV: T. ELBIN 11AUG2016		NAME: Ocean Side Feed Applicator	
0 PLC ±		1 PLC ±		APVD: T. ELBIN 11AUG2016		PRODUCT SPEC		SIZE: CAGE CODE: DRAWING NO: RESTRICTED TO	
2 PLC ±		3 PLC ±		APPLICATION SPEC		WEIGHT		SCALE: 1:2 SHEET 3 OF 4 REV C	
4 PLC ±		ANGLES ±		FINISH		A1 00779 ©=2836424		Customer Accessible Production Drawing	

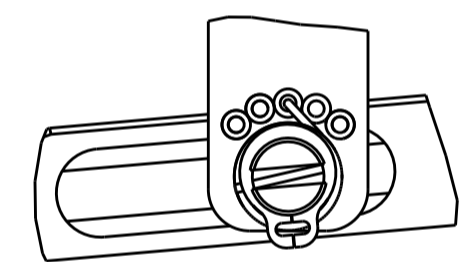
LOC	DIST	REV	DATE	BY	APPV
A	66				
REVISIONS			DESCRIPTION	DATE	BY
			SEE SHEET 1		

FEED TYPE

PNEUMATIC

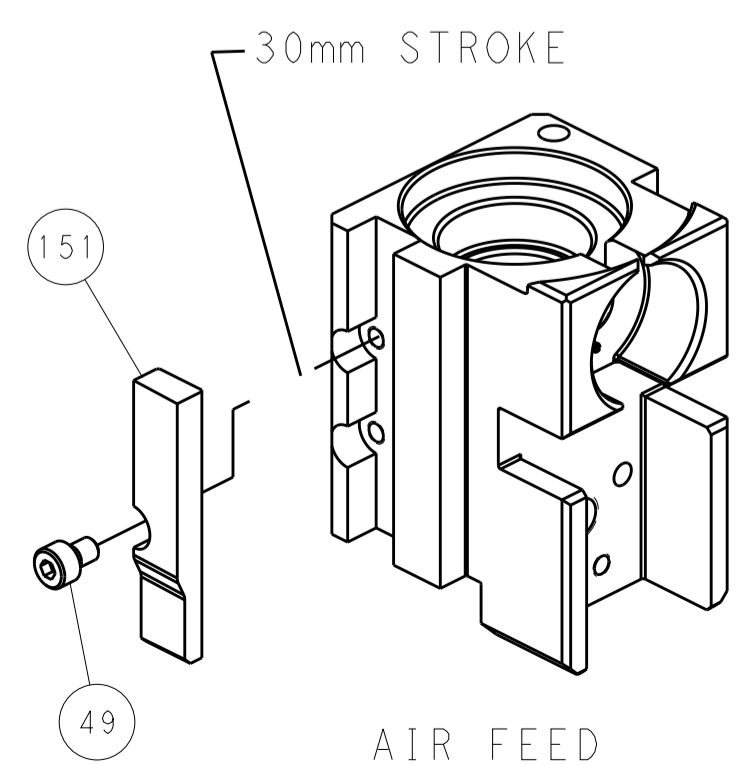


FEED SPRING SETTING POSITION (SHOWN FROM REAR SIDE)

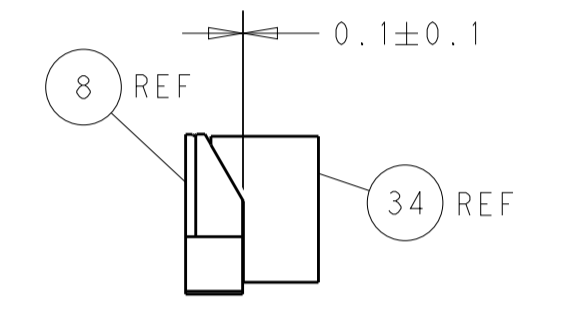
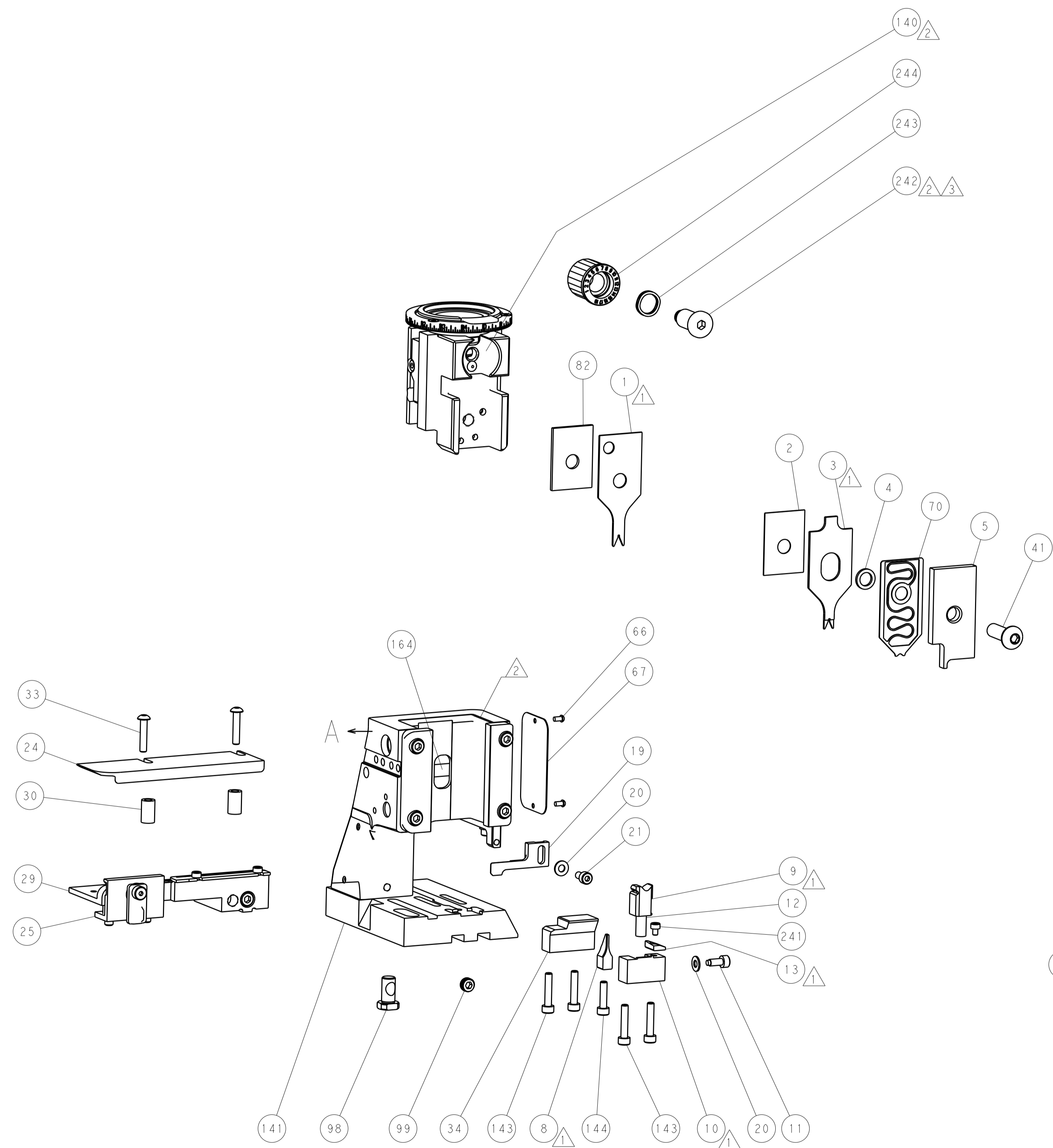


DETAIL A

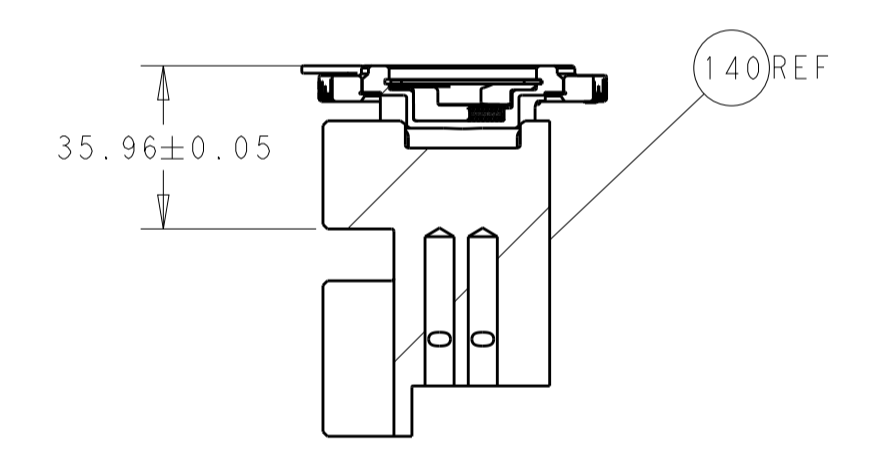
CAM POSITION



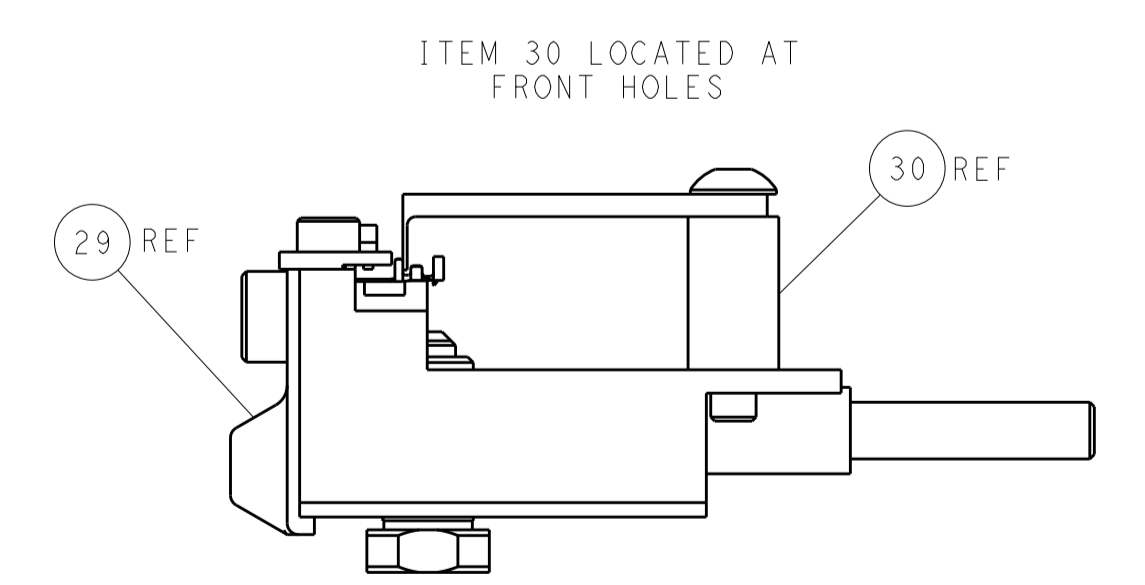
AIR FEED



TERMINAL SUPPORT LOCATION



RAM SET-UP



FEED TRACK POSITION GUIDE BY INSULATION BARREL

PACIFIC VERSION
 Shown on sheets 3 of 4 & 4 of 4
 (Atlantic version shown on sheets 1 of 4 & 2 of 4)

<small>THE DRAWING IS UNPUBLISHED. IT IS THE PROPERTY OF TYCO ELECTRONICS CORPORATION. IT IS TO BE USED ONLY FOR THE PROJECT AND FOR THE CUSTOMER'S USE. IT IS NOT TO BE REPRODUCED, COPIED, OR DISTRIBUTED WITHOUT THE WRITTEN PERMISSION OF TYCO ELECTRONICS CORPORATION.</small>		DWN: M_HERR 11AUG2016 CHK: T_ELBIN 11AUG2016 APVD: T_ELBIN 11AUG2016	NAME: TE Connectivity Harrisburg, PA 17105-3608
DIMENSIONS: mm TOLERANCES UNLESS OTHERWISE SPECIFIED: 0 PLC ± 1 PLC ± 2 PLC ± 3 PLC ± 4 PLC ± ANGLES ±		PRODUCT SPEC APPLICATION SPEC WEIGHT SCALE: 1:2	SIZE: A1 CAGE CODE: 00779 DRAWING NO: C=2836424 SHEET 4 OF 4 REV C
MATERIAL:		FINISH:	RESTRICTED TO: