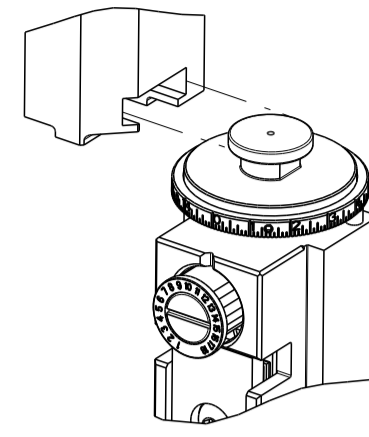


PART NUMBER	REVISION	DESCRIPTION	FEED TYPE
2836350-1	J	FINE CRIMP HEIGHT ADJUST	MECHANICAL
2836350-2	J	FINE CRIMP HEIGHT ADJUST	PNEUMATIC
5-2836350-1	J	SEAL STRIPPER CRIMPER TERMINATING UNIT	MECHANICAL
5-2836350-2	J	SEAL STRIPPER CRIMPER TERMINATING UNIT	PNEUMATIC
7-2836350-7	B	CRIMP TOOLING KIT	-

ATLANTIC VERSION TERMINATOR INTERFACE ADAPTER



APPLICATOR DATA

CRIMP	SIZE	TYPE
WIRE	1.00 mm [.039]	F
INSUL	1.33 mm [.052]	O

APPLICATOR INSTRUCTIONS
408-35042

TERMINAL DATA: MOLEX TERMINAL MOLEX CRIMP SPECIFICATION
TERMINAL NAME: CTX50 RECEPTACLE TERMINAL (UNSEALED)

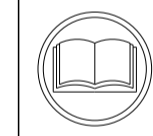
WIRE STRIP LENGTH	INSULATION DIAMETER RANGE
3.06-3.50 mm [.120-.138 IN]	Ø1.10-1.40 mm [.043-.055 IN]

TERMINAL APPLICATION SPECIFICATION AS-560023-001 Rev H

TERMINALS APPLIED

TE TERMINAL	MOLEX TERMINAL	TE TERMINAL	MOLEX TERMINAL
2303594-1	560023-0448	2303594-2	560023-0548
2303594-3	560023-0748	2303594-4	560023-0848

WIRE SIZE	CRIMP HEIGHT mm [INCH]	CRIMP HEIGHT REFERENCE SETTING
0.35mm2	0.67+/-0.02 [.026+/-0.001]	6.7
22 AWG	0.65+/-0.02 [.026+/-0.001]	6.9



- 1 RECOMMENDED SPARE PARTS
- 2 REFER TO SUPPLIED INSTRUCTION SHEET FOR CLEANING, LUBRICATION AND STORAGE OF APPLICATOR.
- 3 APPLY PART NUMBER 1-23419-5 LOCTITE TO THREADS OF ITEMS 180. APPLY PART NUMBER 2-23419-6 LOCTITE TO THREADS OF ITEM 242.
- 4 CRIMP HEIGHT REFERENCE SETTING WAS THE SETTING USED WHEN THE APPLICATOR WAS QUALIFIED AT THE FACTORY. ADJUSTMENT MAY BE NECESSARY WHEN RUNNING APPLICATOR IN THE FIELD.
- 5 TERMINAL LUBRICANT IS RECOMMENDED.
- 6. UNLESS SPECIFIED OTHERWISE TORQUE VALUES SHALL BE USED PER DOCUMENT, 101-35000.

***WARNING**
ON INSTALLATION, SET WIRE DISC TO CRIMP HEIGHT REFERENCE SETTING FOR LARGEST WIRE SIZE. CRIMP HEIGHT REFERENCE SETTINGS GREATER THAN THE VALUE SHOWN MAY CAUSE DAMAGE TO THE CRIMP TOOLING. REFER TO THE INSTRUCTION SHEET FOR PROPER SETUP AND ADJUSTMENTS.

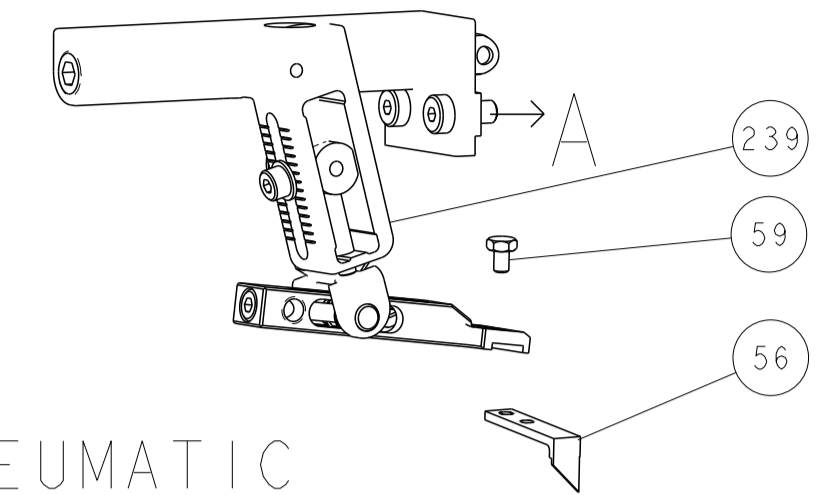
LOC	DIST	REV	DATE	BY	CHK	APPV
A	66	H2	04JUN2021	LJ	YY	
		H3	11APR2024	SS	NH	
		J	18APR2024	TB	TE	
		J1	29AUG2024	SS	TE	

QTY	DESCRIPTION	DATE	BY	CHK	APPV
- 1	1803515-3 RAM ASSEMBLY, SF ATLANTIC				293
- 1	2-1803583-1 APPLICATOR BASIC ASSEMBLY, SF				292
- 1	2119641-1 FEED CAM, AIR FEED				248
- 1	2119082-5 CAM, SNAIL, INSULATION ADJUSTMENT				244
- 1	2079764-1 WASHER, WAVE SPRING, CREST-TO-CREST				243
- 1	2119083-1 RETAINER, INSULATION DIAL				242
- 1	7-18023-7 SCR, SKT HD CAP M3 X 4.0				241
- 1	2119580-1 MECHANICAL FEED ASSEMBLY				239
- 1	2844940-1 AIR FEED MODULE				238
- 1	4-1722335-3 STRIPPER, SIDE FEED				182
- 1	1-5018030-0 NUT, HEX, REG, RoHS, M3.5				181
- 1	1-1752354-4 STANDOFF, HOLD-DOWN				180
- 1	993111-1 PIN, SLOTTED SPRING 3.0 X 20.0				177
- 1	5-22280-0 SPRING, COMPRESSION				176
- 1	1752353-3 GUIDE PIN,HOLDDOWN				175
- 1	1901680-2 GUIDE PIN,HOLDDOWN				174
- REF	994970-2 COUNTER, MAGNETIC				164
- 1	2119955-1 ASSY, LUBRICATOR, SIDE FEED				113
- 1	2844908-1 SCREW, LOCKING				99
- 1	2844907-1 POST, LOCKING				98
- 1	455888-4 SPACER, CRIMPER				82
- 1	1803607-3 DOCUMENTATION PACKAGE				71
- 2	2119791-5 DEPRESSOR, WIRE				70
- 1	2119943-1 WASHER, SPACER				69
- 1	2119740-1 TAG, IDENTIFICATION				67
- 2	2168078-1 SCREW, DRIVE, RH, RoHS, 2 x .188				66
- 1	2168083-2 SCR, SKT HD CAP, RoHS, M4 X 8.0				60
- 1	5-18022-5 SCR, HEX HD CAP, M4 X 6.0				59
- 1	1338685-1 PAWL, FEED				56
- 4	2168083-3 SCR, SKT HD CAP, RoHS, M4 X 12.0				54
- 2	2168083-3 SCR, SKT HD CAP, RoHS, M4 X 12.0				53
- 1	5018030-1 NUT, HEX, REG, RoHS, M3				52
- 1	811242-9 BUMPER, HOLD DOWN				51
- 1	690753-6 SPACER, TONKER				50
- 1	18023-9 SCR, SKT HD CAP M4 X 6.0				49
- 1	2119652-1 FEED CAM, PRE FEED				48
- 1	2119653-1 FEED CAM, POST FEED				47
- 1	1803583-9 APPLICATOR BASIC ASSEMBLY, SF				46
- 1	1803515-1 RAM ASSEMBLY, SF ATLANTIC				44
- 1	1803602-1 SCR, BHSC, RoHS (M8 X 25)				41
- 1	3-1752356-4 SUPPORT, TERMINAL				34
- 2	2079383-5 SCR, BHSC, RoHS (M4 X 20)				33
- 2	2-2844962-4 SPACER, CYLINDRICAL, STRIP GUIDE				30
- 1	2844992-4 ASSEMBLY, STRIP GUIDE				29
- 1	455888-5 SPACER, CRIMPER				28
- 1	240792-5 DRAG, TERMINAL				25
- 1	1320928-2 STRIP GUIDE				24
- 1	2168083-2 SCR, SKT HD CAP, RoHS, M4 X 8.0				21
- 1	1-18028-2 WASHER, FLAT, REG M4				20
- 1	2119533-1 STRIPPER, SIDE FEED				19
- 1	2119806-1 INSERT, SHEAR				13
- 1	3-22280-3 SPRING, COMPRESSION				12
- 1	1-356885-4 STOP, SHEAR				11
- 1	2119805-1 SHEAR HOLDER, FRONT				10
- 1	1803095-6 FLOATING SHEAR, FRONT				9
- 1	2-1803252-6 ANVIL, COMBINATION				8
- 1	240641-2 SPACER				7
- 1	2119757-8 DEPRESSOR, SHEAR				5
- 1	238011-9 BLOCK, CRIMPER SPACER				4
- 1	7-1803019-3 CRIMPER, INSULATION O				3
- 1	6-1333281-8 CRIMPER, WIRE PREMIUM				1

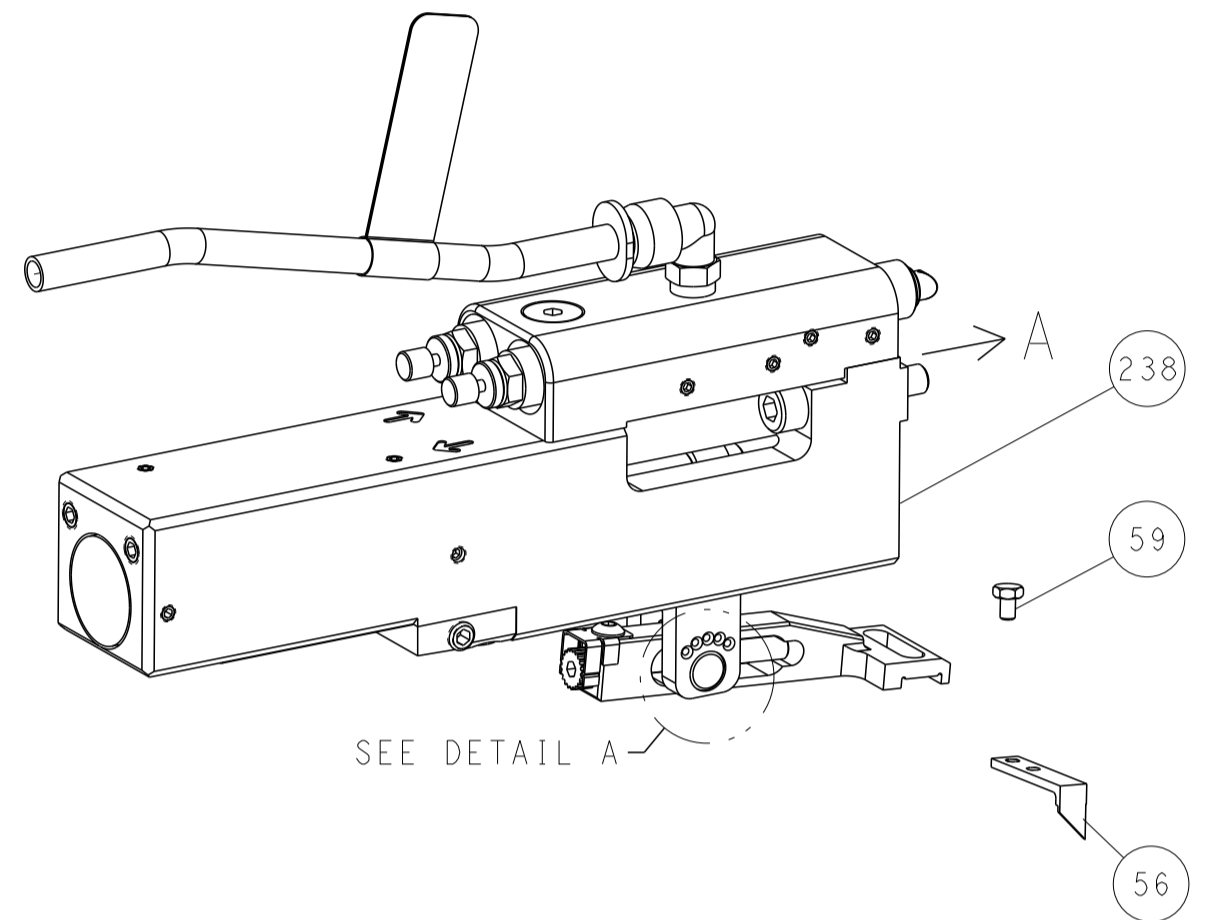
DIMENSIONS: mm 	TOLERANCES UNLESS OTHERWISE SPECIFIED: 0 PLC ±. 1 PLC ±. 2 PLC ±. 3 PLC ±. 4 PLC ±. ANGLES ±. FINISH ±.	DIMENSIONS: mm MATERIAL: - FINISH: -	WEIGHT: - SCALE: A1 00779 ©=2836350 RESTRICTED TO: -	CUSTOMER ACCESSIBLE PRODUCTION DRAWING SCALE: 1:2 SHEET 1 OF 4 REV J1
-----------------------	--	---	--	--

LOC	DIST	REVISIONS					
A	66	P	LYN	DESCRIPTION	DATE	OWN	APVD
		-		SEE SHEET 1	-	-	-

FEED TYPE MECHANICAL



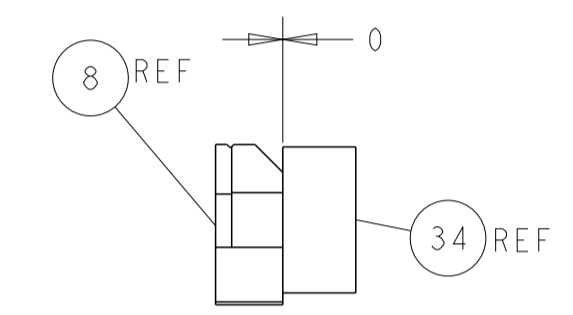
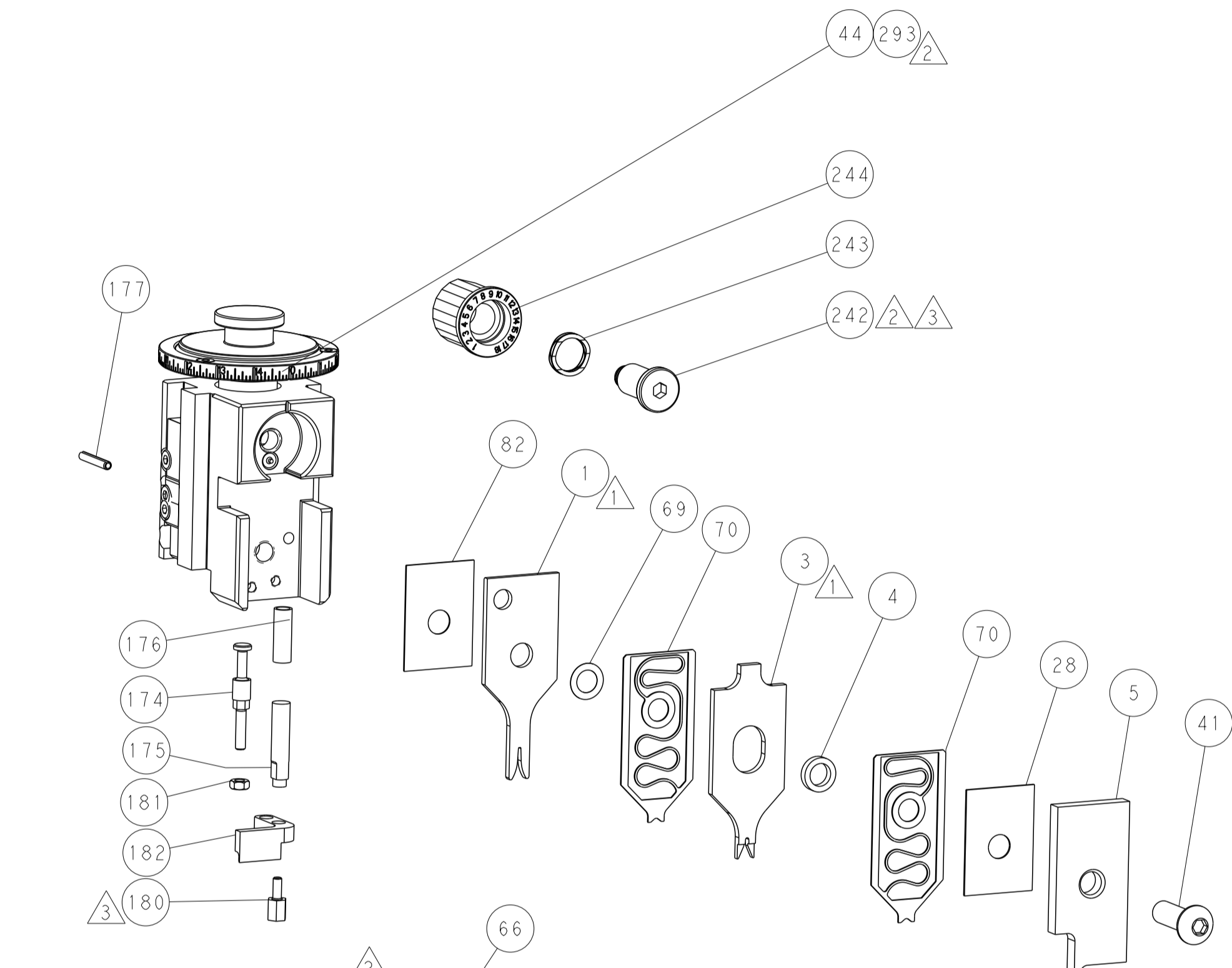
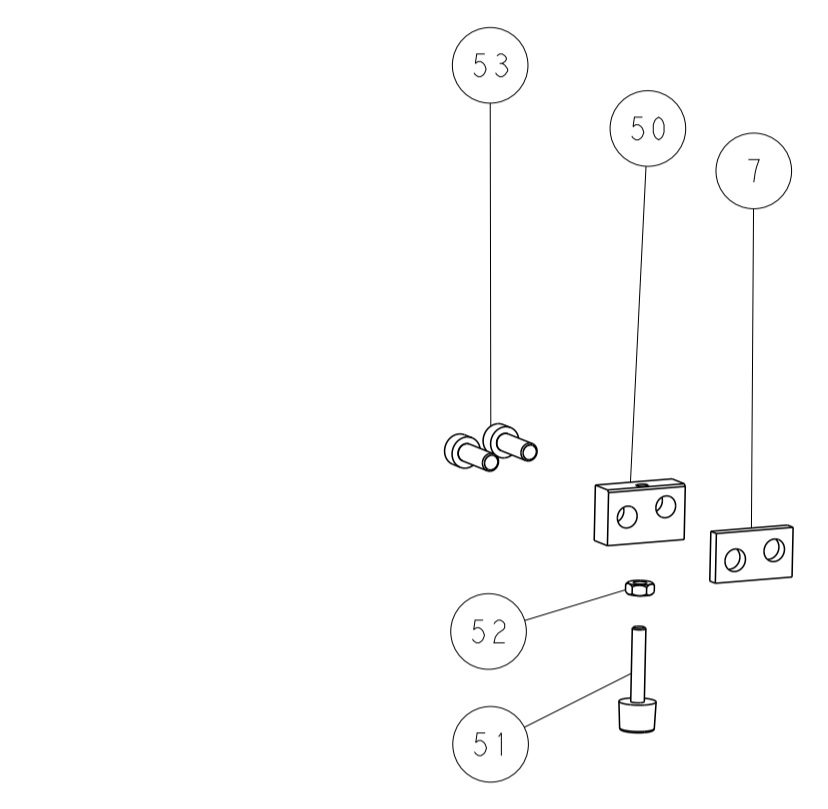
PNEUMATIC



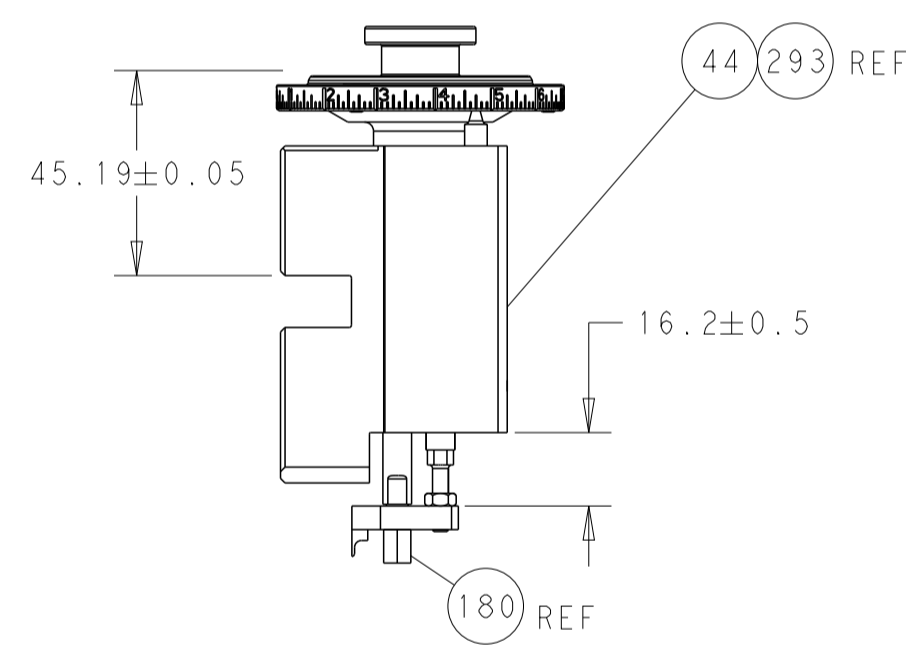
FEED SPRING SETTING POSITION (SHOWN FROM REAR SIDE)



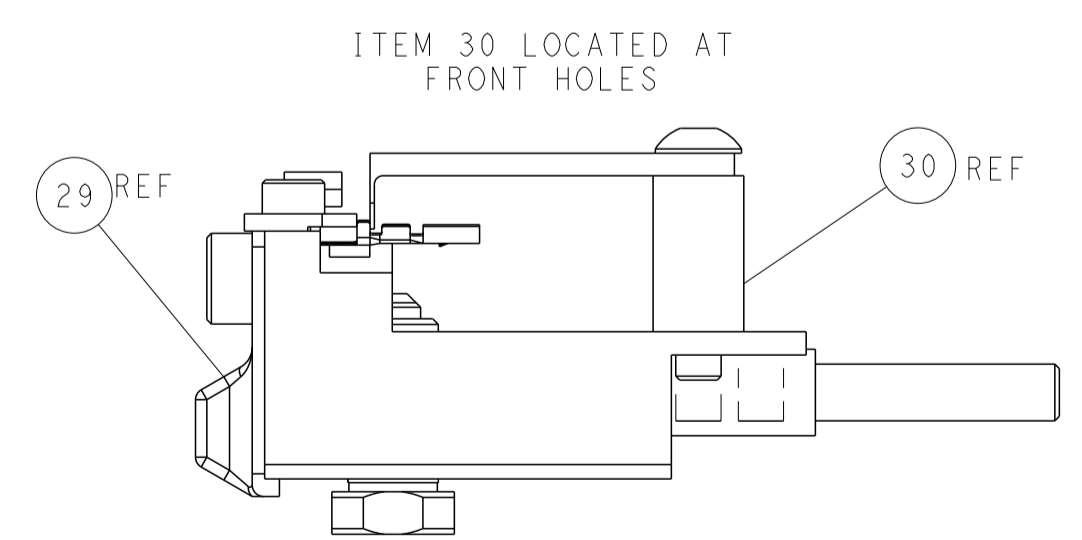
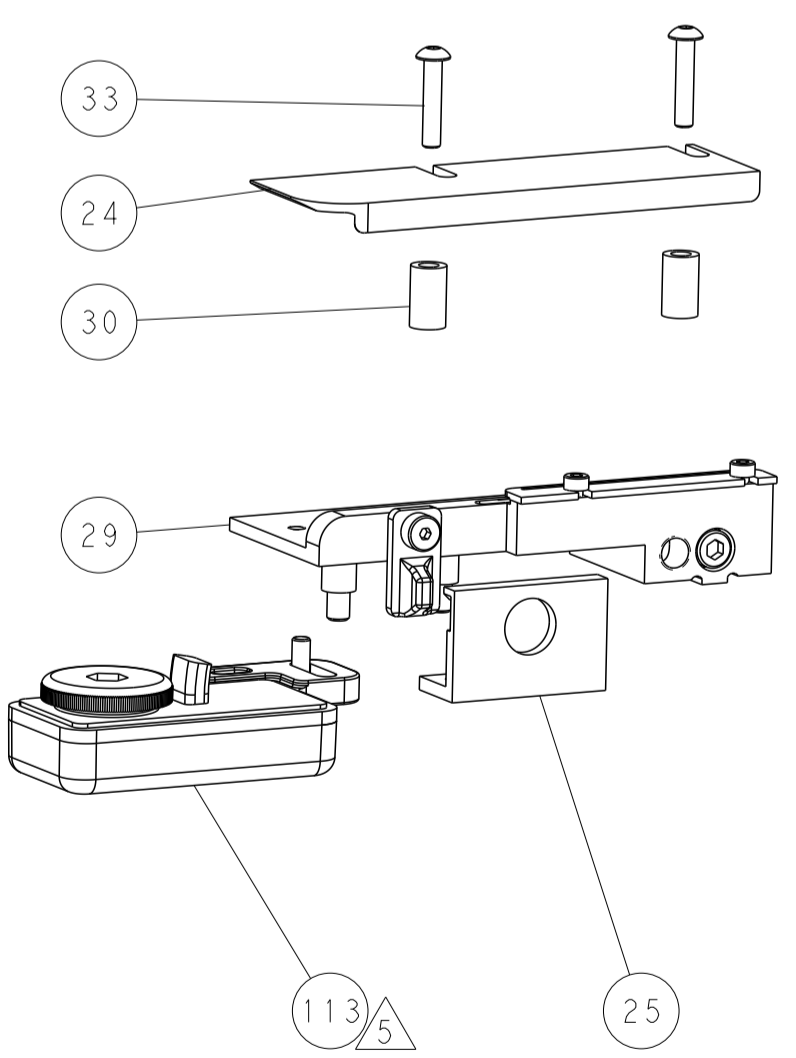
DETAIL A



TERMINAL SUPPORT LOCATION

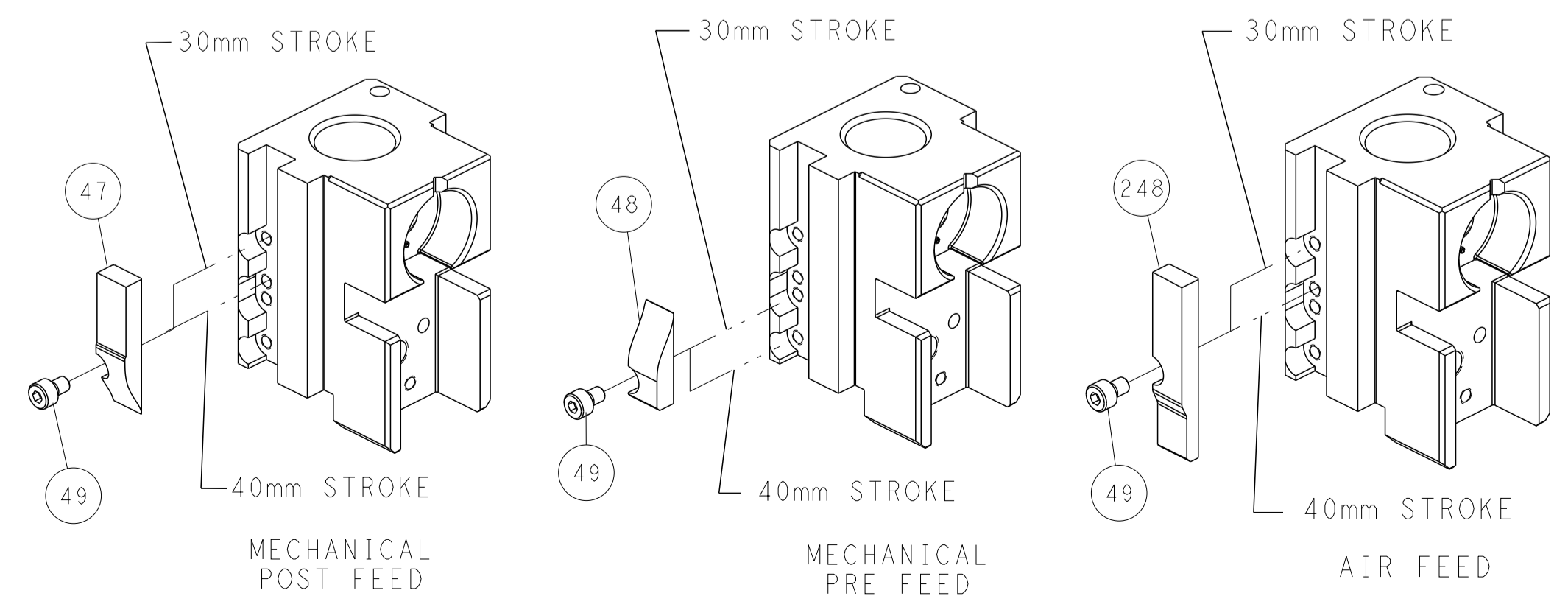


RAM SET-UP



ITEM 30 LOCATED AT FRONT HOLES

CAM POSITIONS



DIMENSIONS: mm TOLERANCES UNLESS OTHERWISE SPECIFIED: 0 PLC ± 1 PLC ± 2 PLC ± 3 PLC ± 4 PLC ± ANGLES ± FINISH		DWN B. WEAVER 14JUN2016 CHK T. ELBIN 14JUN2016 APVD T. ELBIN 14JUN2016 PRODUCT SPEC APPLICATION SPEC WEIGHT SCALE 1:2 SHEET 2 OF 4 REV J1		NAME Ocean Side Feed Applicator SIZE CAGE CODE DRAWING NO. A1 00779 C=2836350 RESTRICTED TO	
MATERIAL:		CUSTOMER ACCESSIBLE PRODUCTION DRAWING		SHEETS 3 & 4 ARE NOT REQUIRED FOR ATLANTIC VERSION	